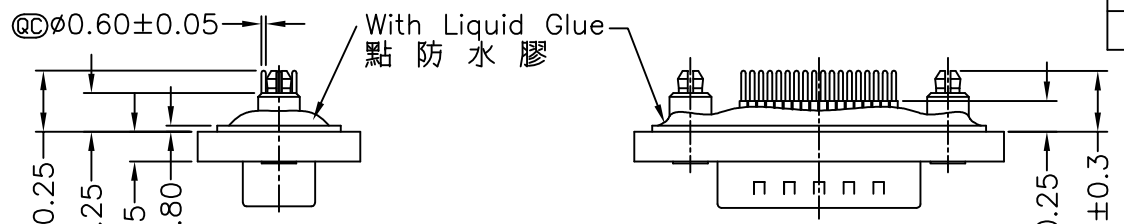
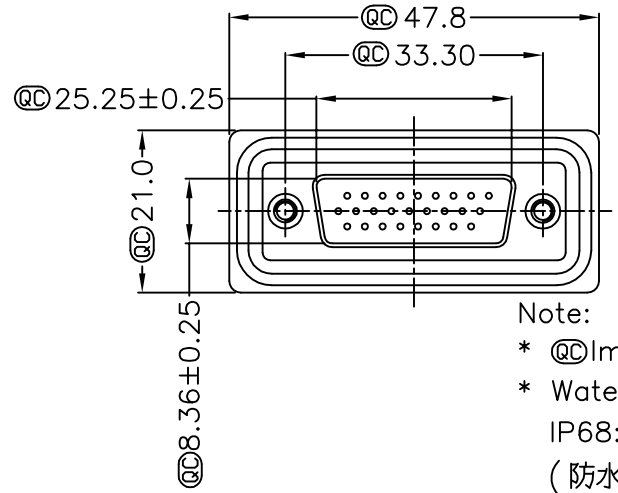
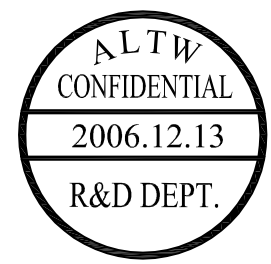


REV. A	ECN NO.	DATE 2006/03/01	SIGN DAVID	DESCRIPTION Released Rev.A
B	LE3-710136	2006/12/13	Gao Ling	Move 0-ring to ZSE00100776



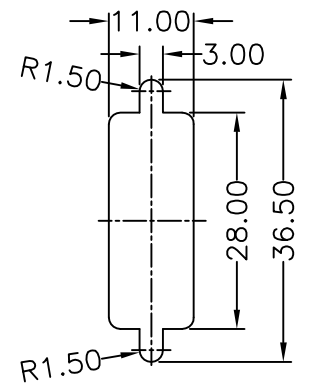
Screw L=5.0 For Panel Thickness Under 1.2mm
適用板厚為1.2mm以下

Screw L=6.0 For Panel Thickness Between 1.2~2.0mm
適用板厚為1.2~2.0mm

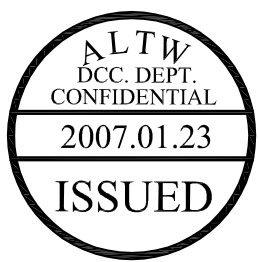
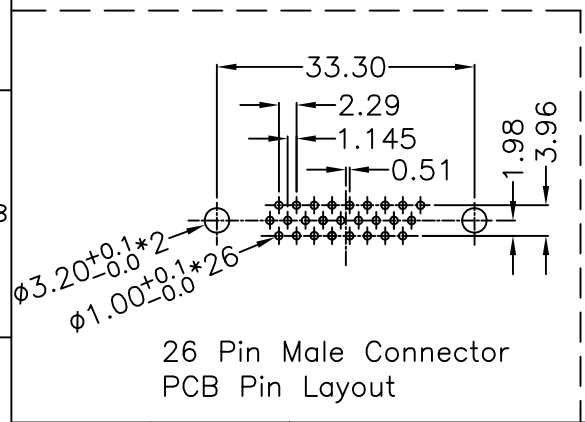
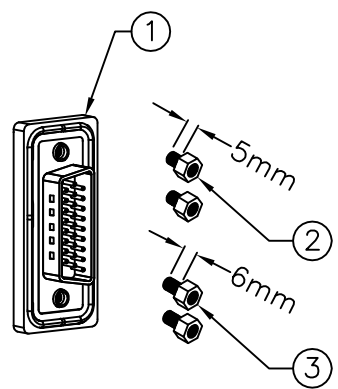


- Note:
- * \textcircled{C} Important Dimension.
 - * Waterproof Rate : IP68
IP68:1M of depth of water 24 hours
(防水等級 IP68)
(IP68:1米水深 24小時)
 - * Do Mating Test After Glued
點膠後, 須作對插測試

- \triangle * HD-SUB Conn. :Black Core , PBT
- \triangle * Plastic Jacket : Black , Nylon+GF
- \triangle * Pin : Copper Alloy , Gold Plated
- \triangle * Ring : Light Blue,Silicone
- \triangle * Screw : Copper Alloy,Nickel Plated,#4-40 UNC
- * The 180° Board Lock Needs
180°型支架需接鐵殼



Recommended Panel Cut-Out
建議挖孔尺寸



UNIT:mm		TITLE HD-SUB Connector 26Pin Male For Panel,PCB 180° Board Lock	Amphenol LTW 安費諾亮泰企業股份有限公司		ITEM NO HDB-26PMMP-SA8001	DRAWN BY Gao Ling	DATE 2006/12/13
TOLERANCE .X ±0.25 .XX ±0.1 .XXX ±0.05 ANGLES ±1°	SCALE Free	SHEET 1 OF 1	SHEET 1 OF 1		DWG NO HDB-26PMMP-SA8001	CHECKED BY SIMON	DATE 2006/12/22
REV. B	SIZE A4	\textcircled{C} :Inspection Item		CUSTOMER ALTW	APPROVED BY MAX	DATE 2006/12/22	8 FMWIG02-01-01A2

THIS DOCUMENT IS SUBJECT TO CHANGE WITHOUT NOTICE. IT IS CONFIDENTIAL AND A PROPERTY OF Amphenol LTW. DISCLOSURE TO THIRD PARTY HAS TO BE AUTHORIZED BY Amphenol LTW.