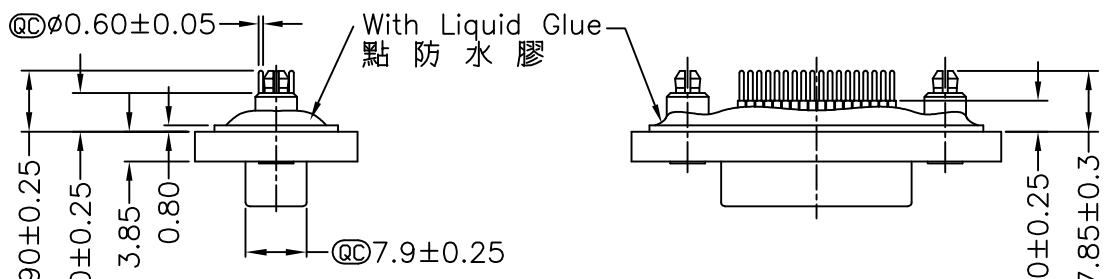


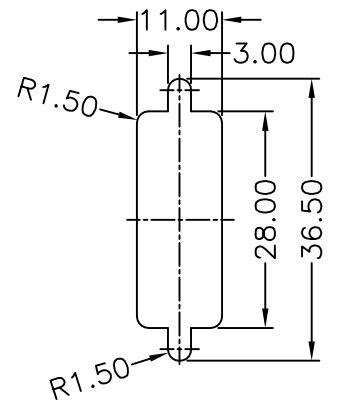
REV. A	ECN NO.	DATE 2006/03/01	SIGN DAVID	DESCRIPTION Released Rev.A
B	LE3-710136	2006/12/13	Gao Ling	Move O-ring to ZSE00100774

THIS DOCUMENT IS SUBJECT TO CHANGE WITHOUT NOTICE. IT IS CONFIDENTIAL AND A PROPERTY OF Amphenol LTW. DISCLOSURE TO THIRD PARTY HAS TO BE AUTHORIZED BY Amphenol LTW.

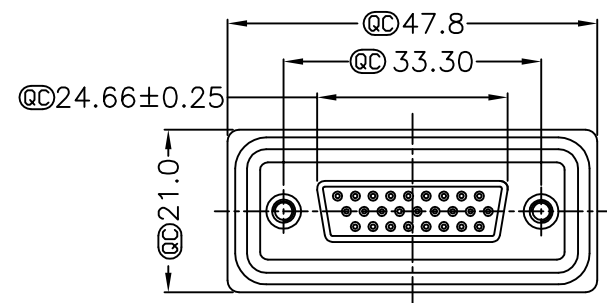
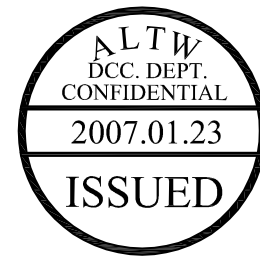


Screw L=5.0 For Panel Thickness Under 1.2mm  
適用板厚為1.2mm以下

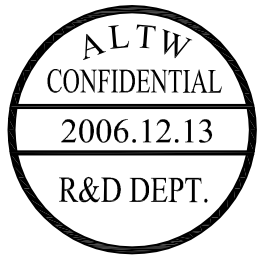
Screw L=6.0 For Panel Thickness Between 1.2~2.0mm  
適用板厚為1.2~2.0mm



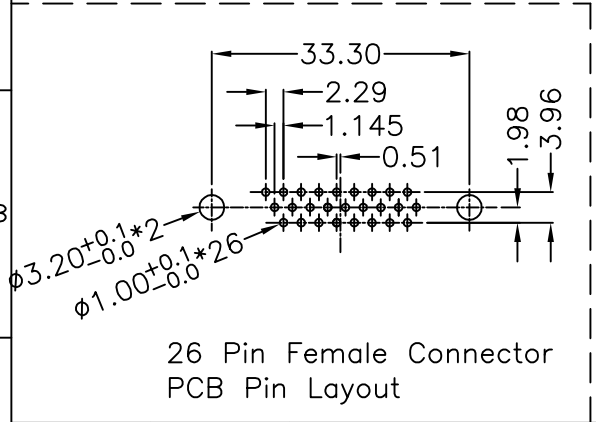
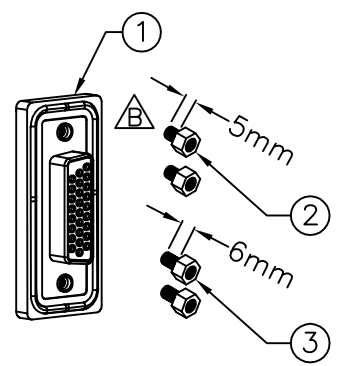
Recommended Panel Cut-Out  
建議挖孔尺寸



- Note:
- \* @C Important Dimension.
  - \* Waterproof Rate : IP68  
IP68:1M of depth of water 24 hours  
(防水等級 IP68)  
(IP68:1米水深 24小時)
  - \* Do Mating Test After Glued  
點膠後, 須作對插測試



- △\* HD-SUB Conn. :Black Core , PBT
- △\* Plastic Jacket : Black , Nylon+GF
- △\* Pin : Copper Alloy , Gold Plated
- △\* Ring : Light Blue,Silicone
- △\* Screw : Copper Alloy,Nickel Plated,#4-40 UNC
- \* The 180° Board Lock Needs To Connect The Iron Shell  
180° 型支架需接鐵殼



UNIT:mm		TITLE HD-SUB Connector 26Pin Female For Panel,PCB 180° Board Lock	
TOLERANCE .X ±0.25 .XX ±0.1 .XXX ±0.05 ANGLES ±1°	SCALE Free	SHEET 1 OF 1	REV. B SIZE A4 @C :Inspection Item

**Amphenol LTW**  
安費諾亮泰企業股份有限公司

ITEM NO HDB-26PFFP-SA8001	DRAWN BY Gao Ling	DATE 2006/12/13
DWG NO HDB-26PFFP-SA8001	CHECKED BY SIMON	DATE 2006/12/22
CUSTOMER ALTW	APPROVED BY MAX	DATE 2006/12/22

DATE 2006/12/13	DATE 2006/12/22	DATE 2006/12/22
--------------------	--------------------	--------------------