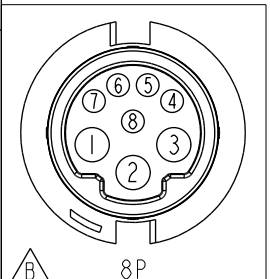
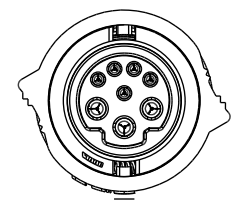
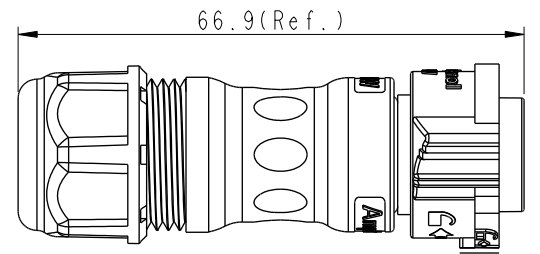
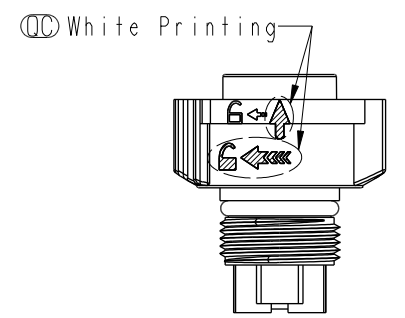
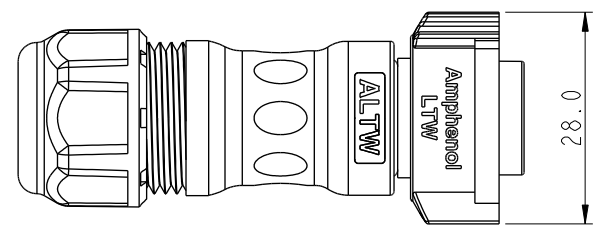
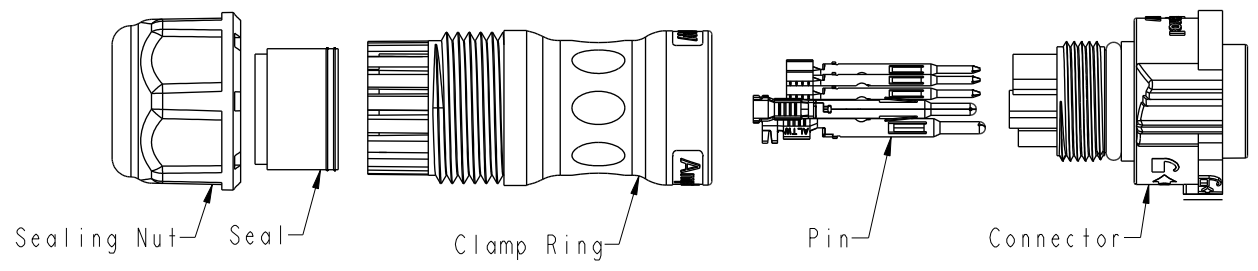


THIS DOCUMENT IS SUBJECT TO CHANGE WITHOUT NOTICE. IT IS CONFIDENTIAL AND A PROPERTY OF Amphenol LTW. DISCLOSURE TO THIRD PARTY HAS TO BE AUTHORIZED BY Amphenol LTW.

REV.	ECN NO.	DATE	SIGN	DESCRIPTION
C	C220628	2022/05/10	Vicky	△C X4
D	C230084	2023/01/30	Vicky	△D XI
E	C231240	2023/09/20	Ruru	△E XI



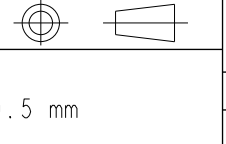
△C
XX: No. Of Pin

- S: With Red Color Seal 1, Cable OD 6.0~8.0mm
- M: With Yellow Color Seal 2, Cable OD 8.0~10.0mm
- L: With Blue Color Seal 3, Cable OD 10.0~12.0mm
- A: With Seal 1 & Seal 2 & Seal 3

- △C Note:
- * RoHS Compliant
 - * Ⓞ Important dimension
 - △D * Waterproof rate: IP68, mated 1m/24h
 - * Connector
 - Housing: Thermoplastic, Black
 - Pin: Copper Alloy, Gold plated
 - Nut: Thermoplastic, Black
 - O-Ring: Rubber, Dark gray
 - * Clamp Ring: Thermoplastic, Black
 - * Sealing Nut: Thermoplastic, Black
 - * Seal: Rubber
 - △E * One set unassembled in one pe bag

Pin Assignments Front View

UNIT:mm
TOLERANCE
±0.5 mm



TITLE XLOK, C-10A+5A, CABLE W/O SR F, M, FI CRIMP, PUSH LOCK			
SCALE 8:5	SIZE A4	SHEET 1 OF 1	
REV. E	WC-REV. A.3	Ⓞ Inspection item	

Amphenol LTW
安費諾亮泰企業股份有限公司

ITEM NO	DRAWN BY Eagle	DATE 2019/12/18
DWG NO △C CBD-XXBFMA-QL8XP0	CHECKED BY Siou	DATE 2019/12/18
CUSTOMER ALTW	APPROVED BY Neo	DATE 2019/12/18