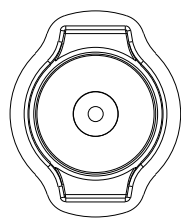
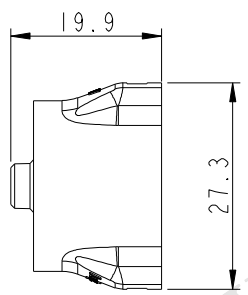
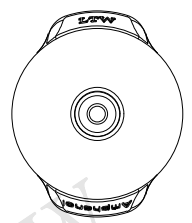


THIS DOCUMENT IS SUBJECT TO CHANGE WITHOUT NOTICE. IT IS CONFIDENTIAL AND A PROPERTY OF Amphenol LTW. DISCLOSURE TO THIRD PARTY HAS TO BE AUTHORIZED BY Amphenol LTW.


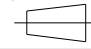
REV.	ECN NO.	DATE	SIGN	DESCRIPTION

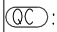
ALTW  
CONFIDENTIAL  
2014-10-18  
R&D DEPT.



ALTW  
DCC. DEPT.  
CONFIDENTIAL  
2014.10.27  
ISSUED

Note:  
\* Waterproof Rate: IP67  
\* Cap: MPPE-540Z, Black

UNIT:mm    
TOLERANCE  
±0.5

TITLE  
MIDDLE SIZE WATERPROOF CAP  
SCALE 1:1 SIZE A4 SHEET 1 OF 1  
REV. A WC-REV. A.1 :Inspection item

**Amphenol LTW**  
安費諾亮泰企業股份有限公司

ITEM NO CAP-WACMRMA1	DRAWN BY Rensong	DATE 2014-10-18
DWG NO CAP-WACMRMA1	CHECKED BY Kt_he	DATE 2014-10-18
CUSTOMER ALTW	APPROVED BY Jerry	DATE 2014-10-18