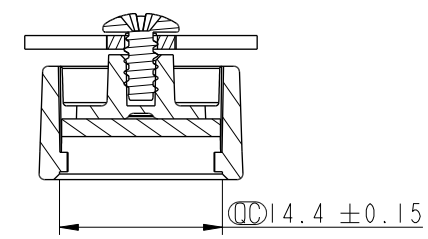
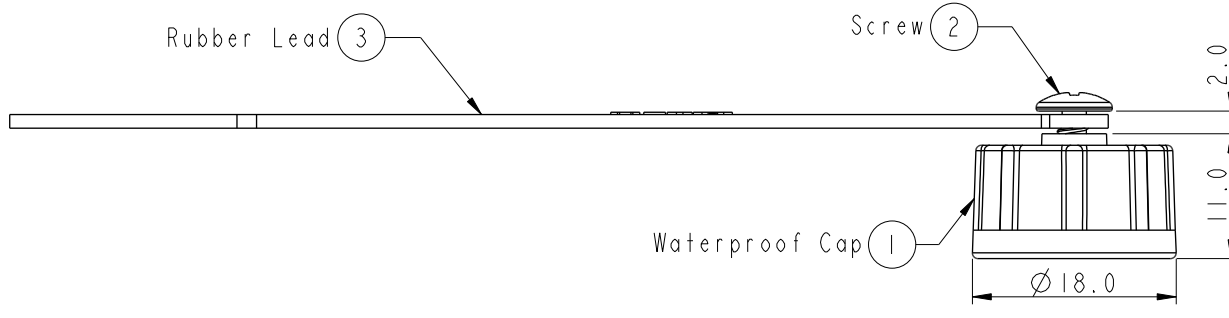
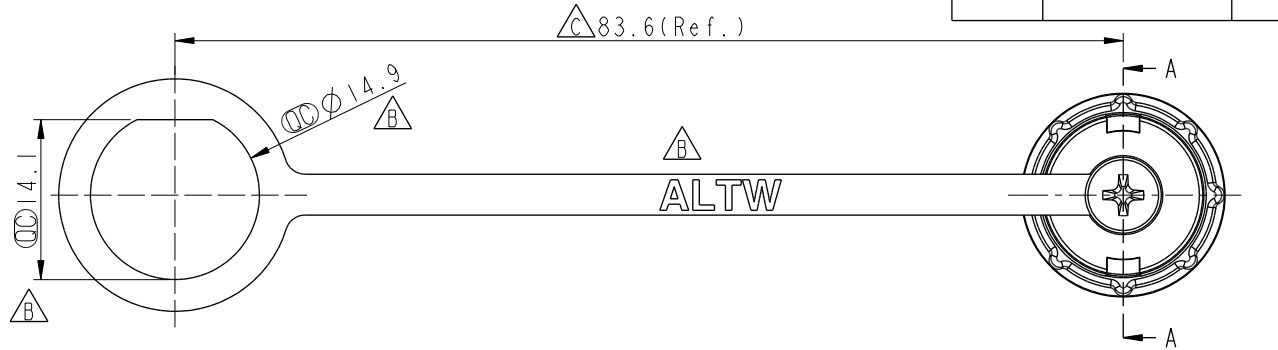


REV.	ECN NO.	DATE	SIGN	DESCRIPTION
B	LEN14C0201	2014/12/03	Vicky	Update Logo & Add Dimension
C	C230202	2023/02/16	Vicky	△X2



Section A-A

- Note:
- \*  $\varnothing$  Important Dimension.
  - \* Waterproof Rate: IP67
  - \* Cap: Nylon+GF, Black
  - \* Gasket: EPDM, Black
  - \* Rubber Lead: TPES, Black
  - \* Screw is not allowed to tight (Chain be revolve)
- 不可將螺絲鎖緊，(鏈條要可旋轉)

UNIT: mm		
TOLERANCE		
.X	±0.25	
.XX	±0.1	
.XXX	±0.05	
ANGLES	±1°	

TITLE		ACC, CERES, WP CAP 2LOCK, W/RB LEAD		
SCALE	3:2	SIZE	A4	SHEET 1 OF 1
REV.	C	WC-REV.	A.3	$\varnothing$ : Inspection item

**Amphenol LTW**  
安費諾亮泰企業股份有限公司

ITEM NO	CAP-WABMLPCI	DRAWN BY	Vicky	DATE	2014-12-03
DWG NO	CAP-WABMLPCI	CHECKED BY	Sam	DATE	2014-12-03
CUSTOMER	ALTW	APPROVED BY	Rita	DATE	2014-12-03

THIS DOCUMENT IS SUBJECT TO CHANGE WITHOUT NOTICE. IT IS CONFIDENTIAL AND A PROPERTY OF Amphenol LTW. DISCLOSURE TO THIRD PARTY HAS TO BE AUTHORIZED BY Amphenol LTW.