

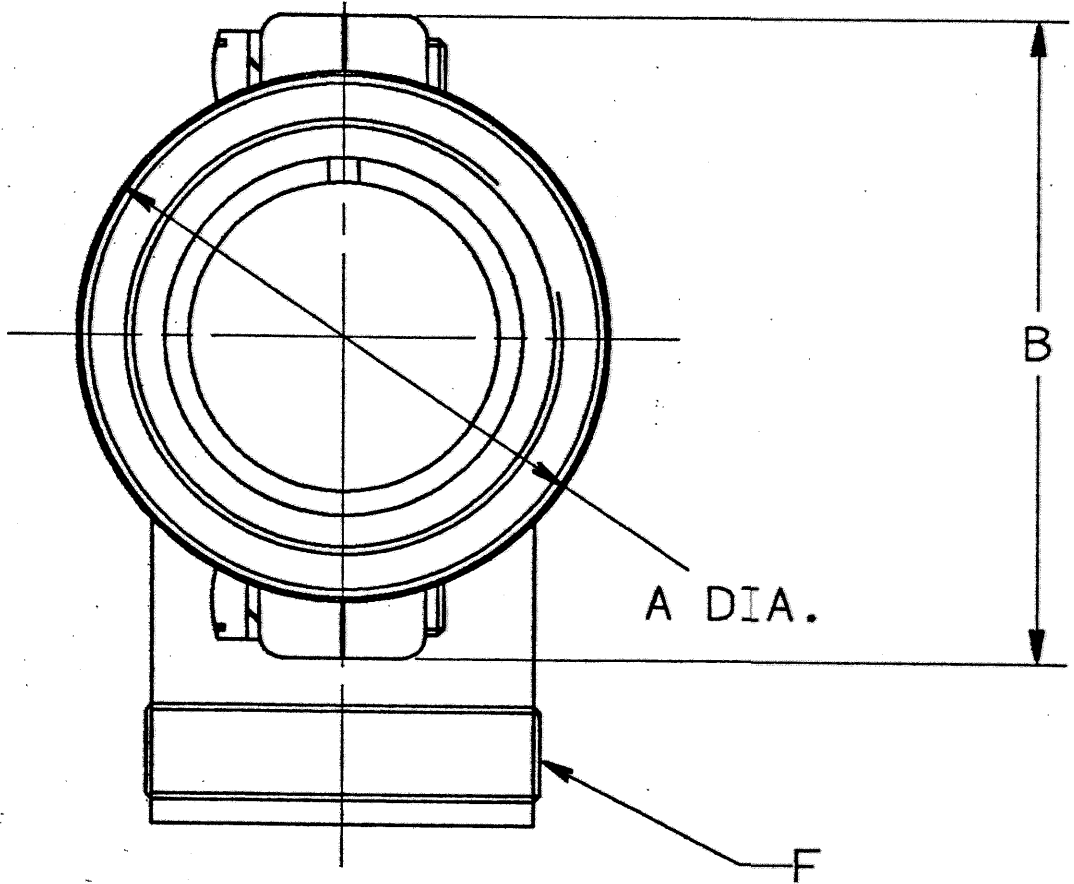
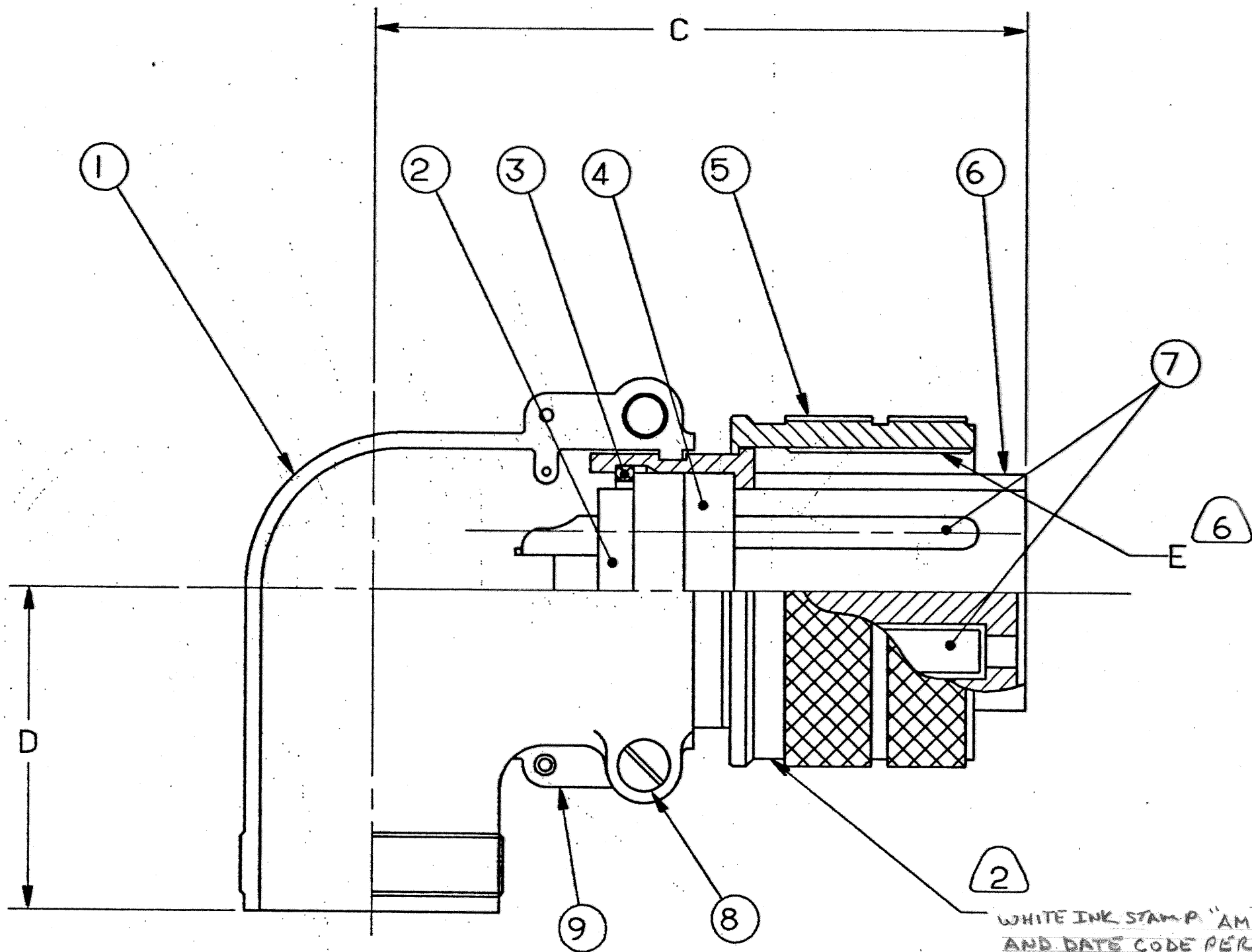
4

3

2

1

| REVISIONS | | | | |
|-----------|-----|-----------------------------|------|----------|
| ZONE | LTR | DESCRIPTION | DATE | APPROVED |
| — | A | (CLII) INITIAL RELEASE NUM: | | |



WHITE INK STAMP "AMPHENOL" CODED NUMBER AND DATE CODE PER 9-3895 ON THIS SURFACE PER 9-3856-5 CHARACTER HEIGHT .062 MINIMUM
 EXAMPLE:
 AMPHENOL
 97-3108B-36-10P(946)
 0606

| QTY | DESCRIPTION | NOTE REF. |
|-----|--------------------------|-----------|
| 9 | SEE NOTE | |
| 8 | SEE NOTE 1 | |
| 7 | SPLIT ELBOW, HALF LEFT | |
| 6 | SCREW | |
| 5 | CONTACTS | |
| 4 | SHELL | |
| 3 | RING, COUPLING | 6 |
| 2 | INSERT, FRONT | |
| 1 | RING, RETAINING | |
| | INSERT, REAR | |
| | SPLIT ELBOW, HALF, RIGHT | |

UNLESS OTHERWISE SPECIFIED LINEAR DIMENSIONS ARE IN INCHES.
 TOLERANCES: .XXX±.010,
 .XX ±.03, .X ±.1,
 ANGLES ±2°.
 OTHER STANDARDS PER 9-3800 AND DOD-D-1000.
 NOTE REF. = XX

| FIND NO. | QTY REQD. | FSCM NO. | PART NUMBER | DESCRIPTION | NOTE REF. |
|--------------------|-----------|--------------------------|-------------|---|--------------|
| PARTS LIST | | | | | |
| SPECIFICATIONS | | SIGNATURES | | DATES | |
| MATERIAL SPEC. N/A | | PREPARED <i>Dematt</i> | | 2-14-06 | |
| | | CHECKED | | | |
| PROCESS SPEC. | | APPROVED <i>Chambers</i> | | 2-14-06 | |
| 9-2437-33 | | APPROVED <i>C+I</i> | | | |
| 9-7568, 9-3895 | | 1ST PART NO. | | | |
| 9-3856-5 | | | | | |
| SIZE | FSCM NO. | AMPHENOL CORPORATION | | CONNECTOR, ELECTRICAL PLUG, TYPE 97-3108B, BLACK ZINC ALLOY PLATE | |
| C | 77820 | CONNECTOR OPERATIONS | | SIDNEY, N.Y. | |
| SCALE | NONE | WT. | REF. | 10-819400/419 | SHEET 1 OF 2 |
| | | | | | REV. A |

SEE SHEET 2.
 NOTES:

THE USE OF THIS DOCUMENT IS UNLIMITED. HOWEVER, DOCUMENTS REFERENCED HEREON MAY CONTAIN LIMITED RIGHTS DATA.

N/A
 N/A
 NEXT ASSEMBLY

93-834880/899

4

3

2

1

| ASSEMBLY NUMBER | CODED NUMBER | A DIA. | B | C | D | E THREAD | F THREAD |
|-----------------|------------------|---------------------|-------|-------|-------|-------------------|-------------------|
| 93-834880-() | 97-3108B- 8S -() | (946) NOT AVAILABLE | | | | | |
| 1-() | -10S -() | NOT AVAILABLE | | | | | |
| 2-() | -10SL-() | .875 | | 1.500 | 1.000 | .6250-24 UNEF-2B | .6250-24 UNEF-2A |
| 3-() | -12S -() | 1.000 | | 1.562 | 1.000 | .7500-20 UNEF-2B | .6250-24 UNEF-2A |
| 4-() | -12SL-() | NOT AVAILABLE | | | | | |
| 5-() | -12 -() | 1.000 | | 1.875 | 1.000 | .7500-20 UNEF-2B | .6250-24 UNEF-2A |
| 6-() | -14S -() | 1.125 | 1.281 | 1.719 | 1.063 | .8750-20 UNEF-2B | .7500-20 UNEF-2A |
| 7-() | -14 -() | NOT AVAILABLE | | | | | |
| 8-() | -16S -() | 1.250 | 1.500 | 1.750 | 1.125 | 1.0000-20 UNEF-2B | .8750-20 UNEF-2A |
| 9-() | -16 -() | 1.250 | 1.500 | 2.125 | 1.125 | 1.0000-20 UNEF-2B | .8750-20 UNEF-2A |
| 93-834889 0-() | -18 -() | 1.344 | 1.641 | 2.156 | 1.187 | 1.1250-18 UNEF-2B | 1.0000-20 UNEF-2A |
| 1-() | -20 -() | 1.469 | 1.812 | 2.375 | 1.312 | 1.2500-18 UNEF-2B | 1.1875-18 UNEF-2A |
| 2-() | -22 -() | 1.594 | 1.937 | 2.406 | 1.312 | 1.3750-18 UNEF-2B | 1.1875-18 UNEF-2A |
| 3-() | -24 -() | 1.719 | 2.063 | 2.625 | 1.437 | 1.5000-18 UNEF-2B | 1.4375-18 UNEF-2A |
| 4-() | -28 -() | 1.969 | 2.312 | 2.625 | 1.437 | 1.7500-18 UNS-2B | 1.4375-18 UNEF-2A |
| 5-() | -32 -() | 2.219 | 2.594 | 2.812 | 1.750 | 2.0000-18 UNS-2B | 1.7500-18 UNS-2A |
| 6-() | -36 -() | 2.469 | 2.848 | 2.844 | 1.937 | 2.2500-16 UN-2B | 2.0000-18 UNS-2A |
| 7-() | -40 -() | 2.719 | 3.156 | 2.969 | 2.062 | 2.2500-16 UN-2B | 2.2500-16 UN-2A |
| 8-() | -44 -() | NOT AVAILABLE | | | | | |
| 9-() | -48 -() | NOT AVAILABLE | | | | | |

TO COMPLETE, ADD APPLICABLE INSERT ARRANGEMENT SUFFIX PER 9-2437-33.

7. IDENTIFY PACKAGE WITH AMPHENOL CODED NUMBER
 EXAMPLE: 97-3108B-36-10P(946)

6. APPLY LUBRICANT 9-7568 TO THREADS OF COUPLING RING.
5. FOR CONTACT ARRANGEMENTS, SEE MIL-STD-1651 OR L-22208-() THROUGH L-22248-().
4. PACKAGE PER PRODUCTION PROCESS SHEET.
3. UNITS MEET THE APPLICABLE REQUIREMENTS OF MIL-C-5015.
2. SEE WORK ORDER FOR PERMISSIBLE ADDITIONAL OR ALTERNATE STAMPING.
1. SEE SEPARATE PARTS LIST FOR COMPONENT PART NUMBERS AND QUANTITIES.

NOTES:
 THE USE OF THIS DOCUMENT IS UNLIMITED. HOWEVER, DOCUMENTS REFERENCED HEREON MAY CONTAIN LIMITED RIGHTS DATA.

| | | |
|-------|----------|---------|
| SIZE | FSCN NO. | REV. |
| C | 77820 | A |
| SCALE | WT. | REF |
| | | SHEET 2 |

93-834880/899