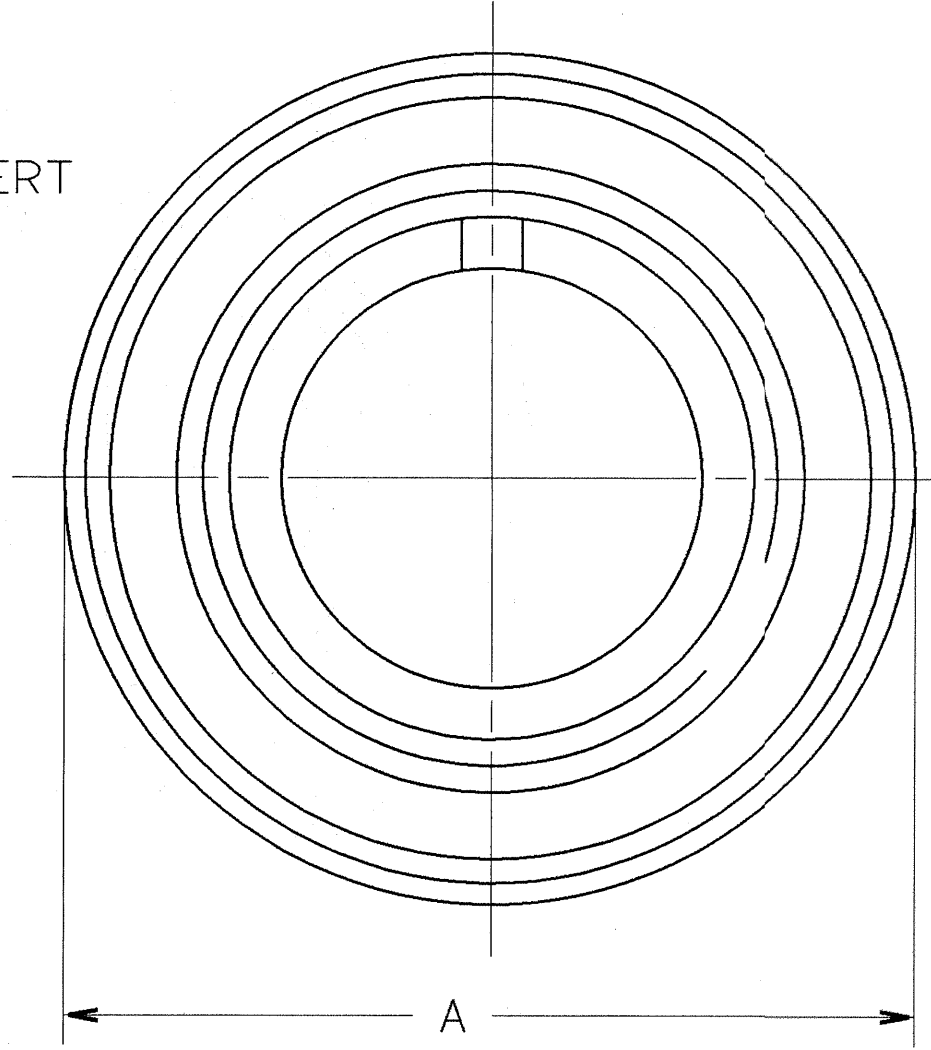
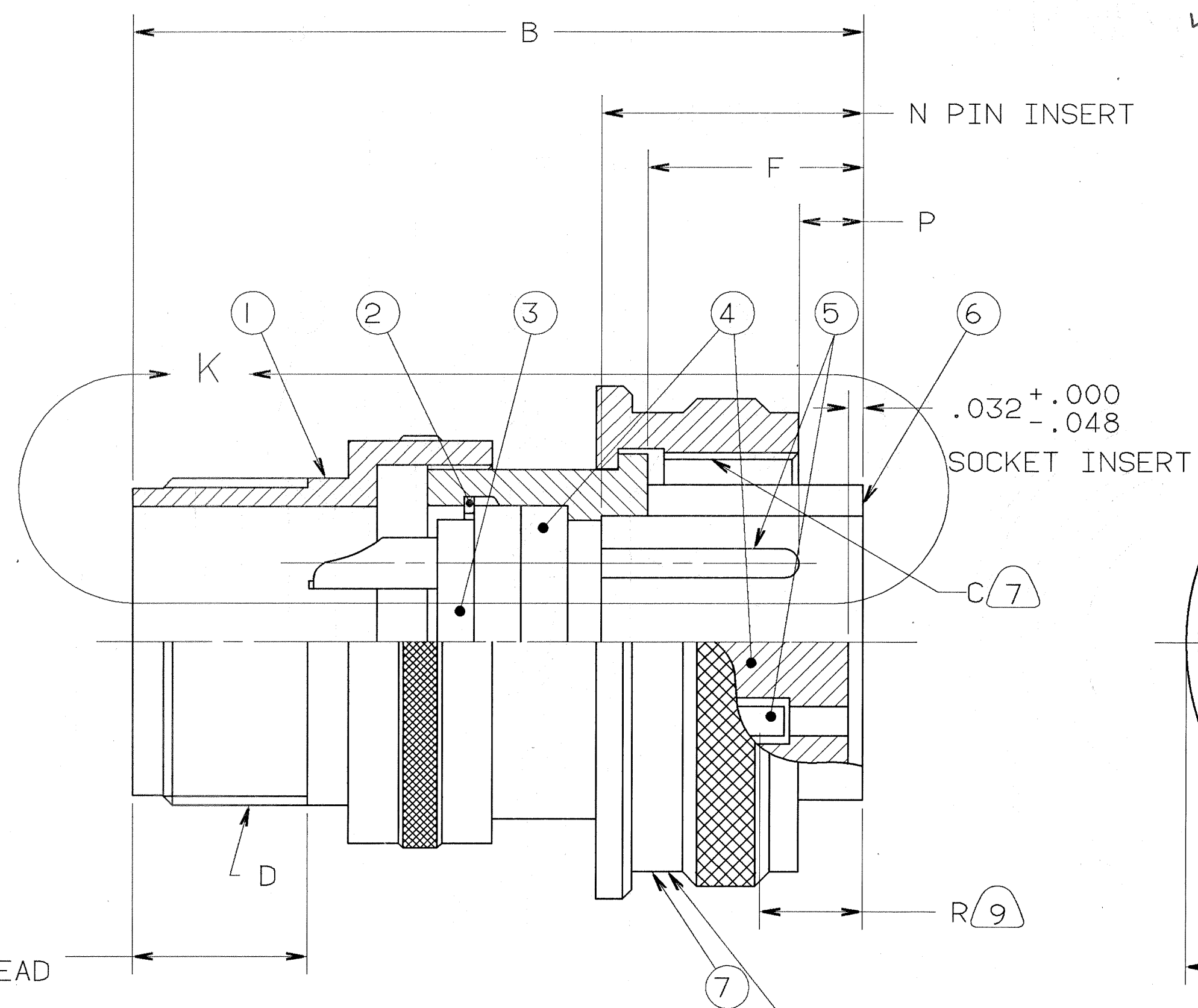
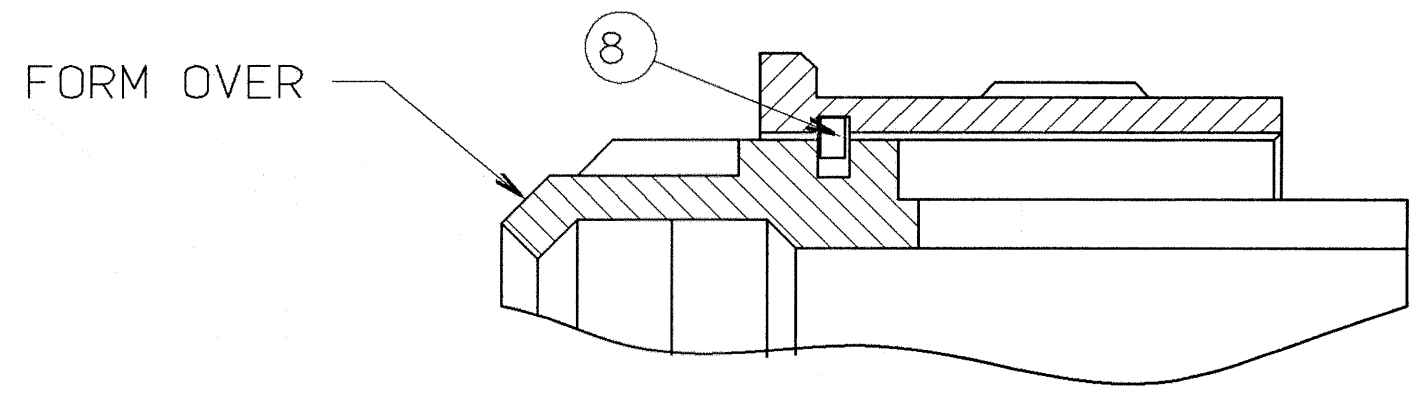


REVISIONS				
ZONE	LTR	DESCRIPTION	DATE	APPROVED
A		INITIAL RELEASE NUM: 70089-55		
B		(CPL) CHANGE BLOCK CHANGE ONLY WAS SHELL 10-617702-XXG (NO SLOT) ECN: 89693	11-16-05	g.e.p.
			DELETED	



METAL STAMP AMPHENOL ASSEMBLY
NUMBER ON THIS SURFACE PER 9-2811
CHARACTER HEIGHT .062 MINIMUM



VIEW K
BACK SHELL REMOVED
SIZE 10SL ONLY

FIND NO.	QTY REQD.	FSCM NO.	PART NUMBER	DESCRIPTION	NOTE REF.
9	1		10-825966-62	RING RETAINING, CPL (12SL ONLY)	
8	1		10-824853-14	RING RETAINING, CPL (10SL ONLY)	
7	1		SEE COLUMN	RING, COUPLING	7
6	1		SEE COLUMN	SHELL	
5			SEE NOTE 1	CONTACTS	6
4	1		10-825820/839-()P	INSERT, PIN FRONT	6
4	1		10-825820/839-()S	INSERT, SOCKET FRONT	
3	1		10-825840/859-()P	INSERT, PIN REAR	6
3	1		10-825840/859-()S	INSERT, SOCKET REAR	
2	1		SEE COLUMN	RING, INSERT RETAINING	
1	1		SEE COLUMN	BACK SHELL	

UNLESS OTHERWISE SPECIFIED LINEAR DIMENSIONS ARE IN INCHES.		PARTS LIST		AMPHENOL CORPORATION BENDIX CONNECTOR OPERATIONS SIDNEY, N.Y.	
TOLERANCES: .XXX±.010, .XX ±.03, .X ±.1, ANGLES ±2°.	OTHER STANDARDS PER 9-3800 AND DOD-D-1000.	SPECIFICATIONS MATERIAL SPEC. N/A	SIGNATURES PREPARED SHEIRER CHECKED [Signature] MATERIAL [Signature]	DATES 02/10/89 2/13/89	CONNECTOR, ELECTRICAL PLUG TYPE 97-3106A, ELECTROLESS NICKEL COATING
NOTE REF. = XX		PROCESS SPEC. 9-2437-33 9-7568 9-2811	APPROVED [Signature]	1ST PART NO. 2-13-89	U
	N/A			SIZE C	FSCM NO. 77820
	N/A			SCALE NONE	WT. REF 97-3106A(689)
	N/A				SHEET 1 OF 3

SEE SHEET 3.
NOTES:

THE USE OF THIS DOCUMENT IS UNLIMITED.
HOWEVER, DOCUMENTS REFERENCED HEREON
MAY CONTAIN LIMITED RIGHTS DATA.

N/A
N/A
NEXT ASSEMBLY

4

3

2

1

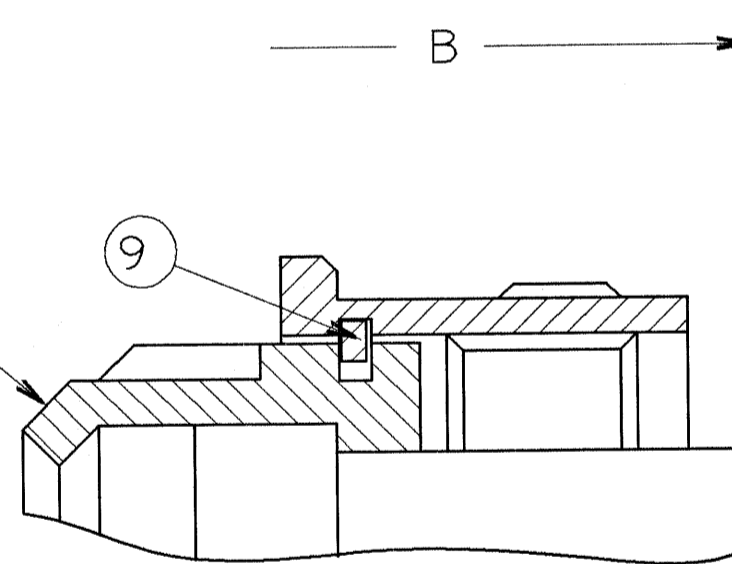
ASSEMBLY NUMBER	AMPHENOL ASSEMBLY NUMBER	SHELL	RETAINING RING	BACK SHELL	COUPLING RING	A DIA MAX	B MAX	C THREAD (PLATED)	D THREAD (PLATED)
10-821360-()	97-3106A- 8S -() (689)	10-824944- 8	10-824966- 8	10-824996- 8	10-824964- 8	.844	1.469	.5000-28 UNEF-2B	.5000-28 UNEF-2A
1-()	-10S -()	10-824944-10	10-824966-10	10-824996-10	10-824964-10	.969	1.531	.6250-24 UNEF-2B	.5000-28 UNEF-2A
2-()	-10SL-()	10-824944-11		10-824996-11	10-824964-11	.969	1.531	.6250-24 UNEF-2B	.6250-24 UNEF-2A
3-()	-12S -()	10-824944-12	10-824966-13	10-824996-13	10-824964-12	1.062	1.688	.7500-20 UNEF-2B	.6250-24 UNEF-2A
4-()	-12SL-()	10-824944-62		10-824996-15	10-824964-62	1.062	1.688	.7500-20 UNEF-2B	.7500-20 UNEF-2A
5-()	-12 -()	10-824944-13	10-824966-13	10-824996-13	10-824964-13	1.062	2.062	.7500-20 UNEF-2B	.6250-24 UNEF-2A
6-()	-14S -()	10-824944-14	10-824966-15	10-824996-15	10-824964-14	1.156	1.688	.8750-20 UNEF-2B	.7500-20 UNEF-2A
7-()	-14 -()	10-824944-15	10-824966-15	10-824996-15	10-824964-15	1.156	2.062	.8750-20 UNEF-2B	.7500-20 UNEF-2A
8-()	-16S -()	10-824944-16	10-824966-17	10-824996-17	10-824964-16	1.250	1.688	1.0000-20 UNEF-2B	.8750-20 UNEF-2A
9-()	-16 -()	10-824944-17	10-824966-17	10-824996-17	10-824964-17	1.250	2.062	1.0000-20 UNEF-2B	.8750-20 UNEF-2A
10-821370-()	-18 -()	10-824944-18	10-824966-18	10-824996-18	10-824964-18	1.344	2.062	1.1250-18 UNEF-2B	1.0000-20 UNEF-2A
1-()	-20 -()	10-824944-20	10-824966-20	10-824996-18	10-824964-20	1.469	2.188	1.2500-18 UNEF-2B	1.1875-18 UNEF-2A
2-()	-22 -()	10-824944-22	10-824966-22	10-824996-22	10-824964-22	1.594	2.188	1.3750-18 UNEF-2B	1.1875-18 UNEF-2A
3-()	-24 -()	10-824944-24	10-824966-24	10-824996-24	10-824964-24	1.719	2.312	1.5000-18 UNEF-2B	1.4375-18 UNEF-2A
4-()	-28 -()	10-824944-28	10-824966-28	10-824996-28	10-824964-28	1.969	2.312	1.7500-18 UNS-2B	1.4375-18 UNEF-2A
5-()	-32 -()	10-824944-32	10-824966-32	10-824996-32	10-824964-32	2.219	2.438	2.0000-18 UNS-2B	1.7500-18 UNS-2A
6-()	-36 -()	10-824944-36	10-824966-36	10-824996-36	10-824964-36	2.469	2.438	2.2500-16 UN-2B	2.0000-18 UNS-2A
7-()	-40 -()	10-824944-40	10-824966-40	10-824996-40	10-824964-40	2.719	2.438	2.5000-16 UN-2B	2.2500-16 UN-2A
8-()	-44 -()								
9-()	-48 -()								

NOT AVAILABLE
NOT AVAILABLE

TO COMPLETE, ADD APPLICABLE INSERT ARRANGEMENT SUFFIX PER 9-2437-33.

ASSEMBLY NUMBER	E MIN	F ±.005	N +.031 -.000
10-821360-()	.375	.531	.562
1-()			
2-()			
3-()			
4-()			
5-()		.719	.750
6-()		.531	.562
7-()		.719	.750
8-()		.531	.562
9-()		.719	.750
10-821370-()			
1-()			
2-()			
3-()			
4-()			
5-()	.438		
6-()	.500		
7-()	.500		
8-()	NOT AVAILABLE		
9-()	NOT AVAILABLE		

FORM OVER



VIEW K
BACK SHELL REMOVED
SIZE 12SL ONLY

TO COMPLETE, ADD APPLICABLE INSERT ARRANGEMENT SUFFIX PER 9-2437-33.

SEE SHEET 3

NOTES:

THE USE OF THIS DOCUMENT IS UNLIMITED. HOWEVER, DOCUMENTS REFERENCED HEREON MAY CONTAIN LIMITED RIGHTS DATA.

SIZE	FSCM NO.	10-821360/379	REV.
C	77820		B
SCALE	WT.	REF	SHEET 2

4

3

2

1

D

D

C

C

B

B

A

A

10-821360/379

9. DISTANCE FROM END OF SHELL TO THE POINT AT WHICH A GAGE PIN, HAVING THE SAME BASIC DIAMETER AS THE MATING CONTACT AND A SQUARE FACE, ENGAGES SOCKET CONTACT SPRING.
8. FOR MATING CONNECTOR ASSEMBLIES SEE 10-821340/359 & OTHERS.
7. APPLY LUBRICANT 9-7568 TO THREADS OF COUPLING RING.
6. FOR ASSEMBLIES THAT ARE MOLDED IN PIN (MIP) INSERT DESIGN USE 10-825800/819-()P INSERT. SHELL SIZE 10SL & 12SL ARE ONLY AVAILABLE IN SOCKET ARRANGEMENTS.
5. FOR CONTACT ARRANGEMENTS, SEE MIL-STD-1651 OR L-22208-() THROUGH L-22248-().
4. PACKAGE PER PRODUCTION PROCESS SHEET.
3. UNITS MEET THE APPLICABLE REQUIREMENTS OF MIL-C-5015.
2. SEE WORK ORDER FOR PERMISSIBLE ADDITIONAL OR ALTERNATE STAMPING.
1. SEE SEPARATE PARTS LIST FOR COMPONENT PART NUMBERS AND QUANTITIES.

CONTACT SIZE	P		R
	MIN	MAX	MAX
16	.250	.312	.281
16S	.062	.125	.281
12			.375
8			.375
4			.375
0			.281

NOTES:

THE USE OF THIS DOCUMENT IS UNLIMITED. HOWEVER, DOCUMENTS REFERENCED
HEREON MAY CONTAIN LIMITED RIGHTS DATA.

SIZE C	FSCM NO. 77820	10-821360/379	REV. B
SCALE	WT.	REF	SHEET 3

COMPUTER GENERATED DRAWING

IMAGED / Mar. 21 2006, 08:34 AM

TAB.

CLIP HERE