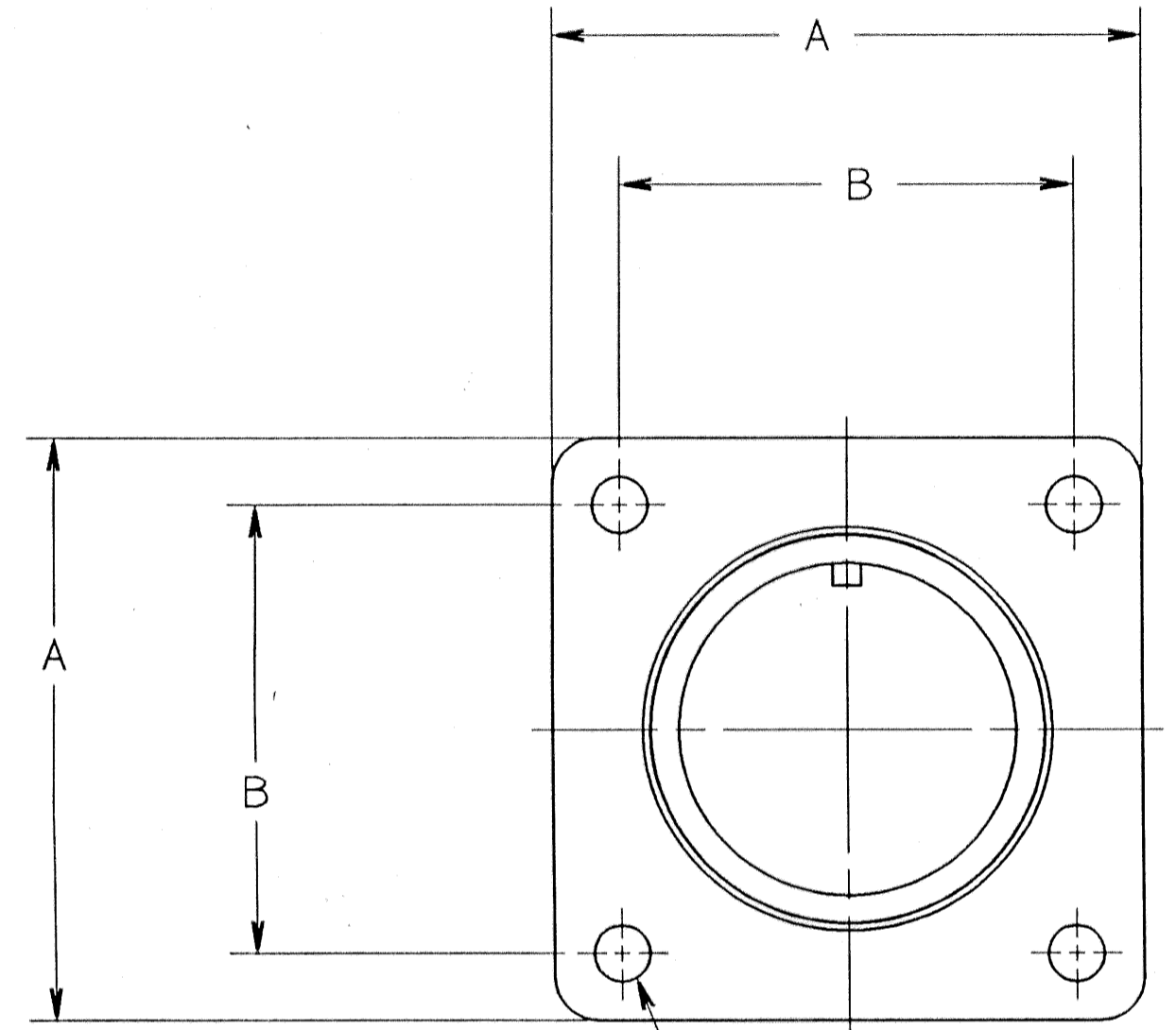
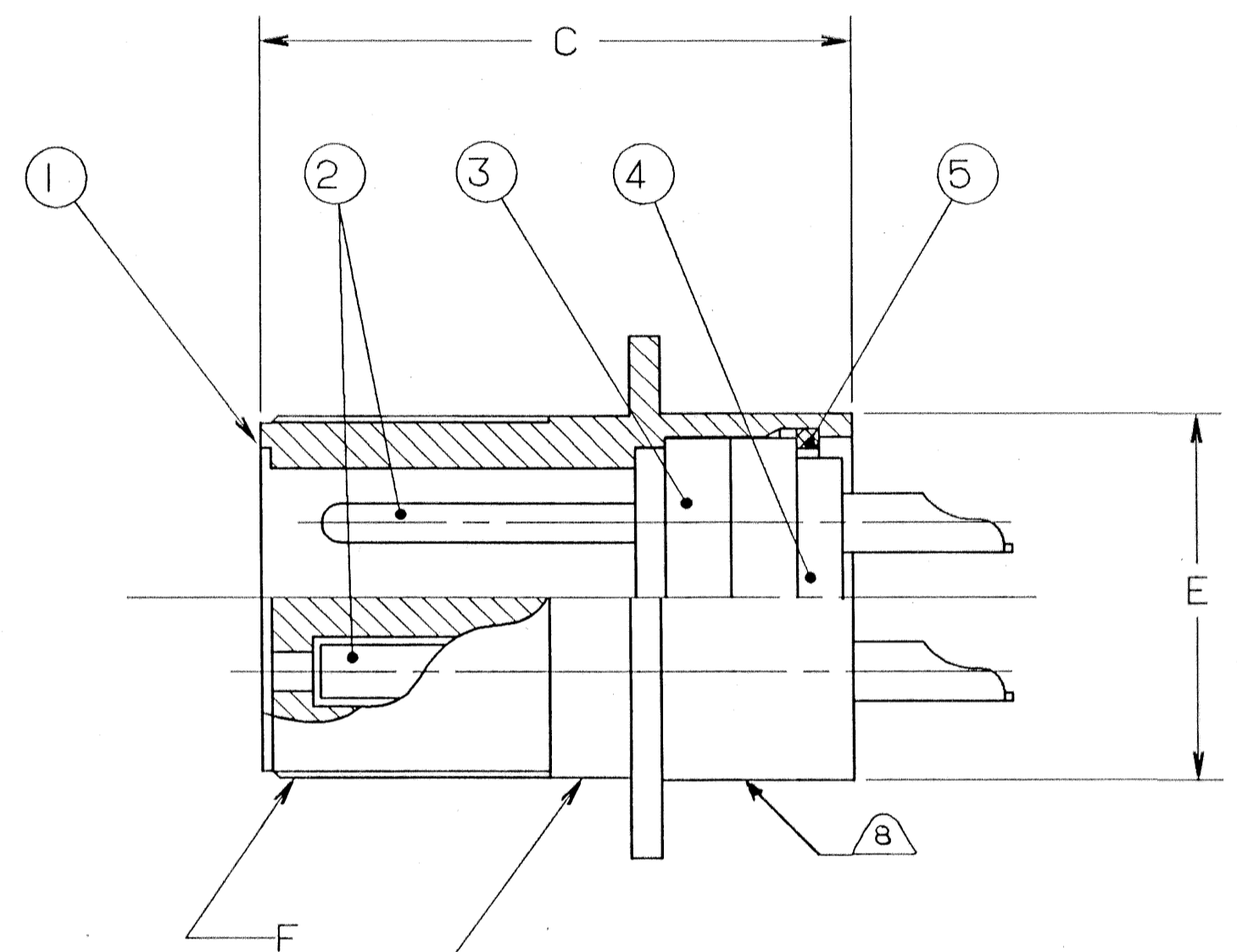


70094-297		REVISIONS		
ZONE	LTR	DESCRIPTION	DATE	APPROVED
-	A			
	B	(CLT) CHANGE BLOCK CHANGE ONLY WAS SHELL 10-617703-XXY (NOSLOT) ECN:89759	11-16-05 DEMATTED	JED



D
4 PLACES



STAMP AMPHENOL ASSEMBLY (2)
NUMBER ON THIS SURFACE.
CHARACTER HEIGHT .062 MINIMUM.

FIND NO.	QTY REQD.	FSCM NO.	PART NUMBER	DESCRIPTION	NOTE REF.
5	SEE NOTE		SEE NOTE 1	RING, RETAINING	
4				INSERT, REAR	
3				INSERT, FRONT	
2				CONTACTS	
1				SHELL	

UNLESS OTHERWISE SPECIFIED
LINEAR DIMENSIONS ARE IN
INCHES.
TOLERANCES: .XXX±.010,
.XX ±.03, .X ±.1,
ANGLES ±2°.
OTHER STANDARDS PER 9-3800
AND DOD-D-1000.
NOTE REF. = (XX)

SPECIFICATIONS		SIGNATURES		DATES		PARTS LIST			
MATERIAL SPEC.	N/A	PREPARED	DEMATTEO	6-20-94		AMPHENOL CORPORATION BENDIX CONNECTOR OPERATIONS SIDNEY, N.Y.			
PROCESS SPEC.	9-2437-33	CHECKED	de Matteo	6-20-94		CONNECTOR, ELECTRICAL RECEPTACLE TYPE 97-3102A, BLACK ZINC ALLOY PLATED			
		APPROVED	Al Davis	6-20-94		SIZE	FSCM NO.	REF.	REV.
		1ST PART NO.				C	77820	10-831280/299	B
						SCALE	NONE	WT.	SHEET 1 OF 2
								N/A	

SEE SHEET 2.
NOTES:

THE USE OF THIS DOCUMENT IS UNLIMITED.
HOWEVER, DOCUMENTS REFERENCED HEREON
MAY CONTAIN LIMITED RIGHTS DATA.

N/A
N/A
NEXT ASSEMBLY

16 21 98241 15 02 PRELISE 10-8320040039 E002

D

C

B

A

D

C

B

A

BENDIX ASSEMBLY NUMBER	AMPHENOL ASSEMBLY NUMBER	3						2	
		A	B	C	D DIA.	E DIA.	F THREAD		
10-831280-()	97-3102A- 8S -() (621)	.875	.594	.938	.120	.438	.5000-28	UNEF-2A	
10-831281-()	-10S -()	1.000	.719	.938	↓	.500	.6250-24	UNEF-2A	
10-831282-()	-10SL-()	1.000	.719	.938		.688	.6250-24	UNEF-2A	
10-831283-()	-12S -()	1.094	.812	.961		.688	.7500-20	UNEF-2A	
10-831284-()	-12SL-()	1.094	.812	.875		.688	.7500-20	UNEF-2A	
10-831285-()	-12 -()	1.094	.812	1.322		.688	.7500-20	UNEF-2A	
10-831286-()	-14S -()	1.188	.906	.944		.750	.8750-20	UNEF-2A	
10-831287-()	-14 -()	1.188	.906	1.322		.750	.8750-20	UNEF-2A	
10-831288-()	-16S -()	1.281	.969	.944		.875	1.0000-20	UNEF-2A	
10-831289-()	-16 -()	1.281	.969	1.353		.875	1.0000-20	UNEF-2A	
10-831290-()	-18 -()	1.375	1.063	1.454		1.000	1.1250-18	UNEF-2A	
10-831291-()	-20 -()	1.500	1.156	1.353		1.125	1.2500-18	UNEF-2A	
10-831292-()	-22 -()	1.625	1.250	1.353		2.250	1.3750-18	UNEF-2A	
10-831293-()	-24 -()	1.750	1.375	1.353		.147	1.5000-18	UNEF-2A	
10-831294-()	-28 -()	2.000	1.563	1.353		.147	1.7500-18	UNEF-2A	
10-831295-()	-32 -()	2.250	1.750	1.447		.173	1.906	2.0000-18	UNEF-2A
10-831296-()	-36 -()	2.500	1.938	1.447	2.125	2.2500-16	UN-2A		
10-831297-()	-40 -()	2.750	2.188	1.447	2.375	2.5000-16	UN-2A		
10-831298-()	-44 -()	NOT AVAILABLE							
10-831299-()	-48 -()	NOT AVAILABLE							

TO COMPLETE, ADD APPLICABLE INSERT ARRANGEMENT SUFFIX PER 9-2437-33.

6. IDENTIFY PACKAGE WITH AMPHENOL ASSEMBLY NUMBER
EXAMPLE: 97-3102A-22-19P(621)

5. FOR CONTACT ARRANGEMENT, SEE MIL-STD-1651 AND L-22208-() THROUGH L-22248-() .
4. PACKAGE PER PRODUCTION PROCESS SHEET.
3. UNITS MEET THE APPLICABLE REQUIREMENTS OF MIL-C-5015.
2. SEE WORK ORDER FOR PERMISSIBLE ADDITIONAL OR ALTERNATE STAMPING.
1. SEE SEPARATE PARTS LIST FOR COMPONENT PART NUMBERS AND QUANTITIES.

NOTES:

THE USE OF THIS DOCUMENT IS UNLIMITED. HOWEVER, DOCUMENTS REFERENCED HEREON MAY CONTAIN LIMITED RIGHTS DATA.

SIZE C	FSCM NO. 77820	REF 10-831280/299	REV B
SCALE	WT.	SHEET 2	TAB.

COMPUTER GENERATED DRAWING

IMAGED / Feb 24 2006 11:55 AM

97-3102A(621)