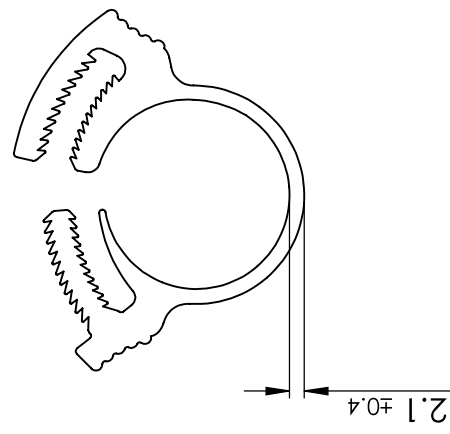
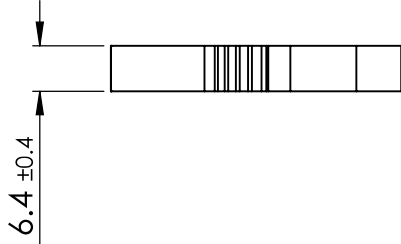


**CLAMPING RANGE**  
20.3 - 23.0



© 2013 Essentra Components. All rights reserved.  
Registered in England, Company No. 547495.  
Registered Office: Essentra plc  
Langford Locks, Kidlington, Oxford, OX5 1HX

Condition of Sale can be found on our website: [essentra.com](http://essentra.com).  
Essentra Components does not warrant that the files will be error free and may create new versions ("Upgrades") at any time, which may correct such errors. Essentra Components has no obligation to notify you of such upgrades. Any upgraded file will be published to the website, when it becomes available.

You are not permitted to load any of the files on to a network server for the purposes of distribution to one or more other computer(s) on that network or to effect such distribution. Essentra Components shall not be liable for any loss or damage whatsoever or however caused, arising directly or indirectly from the use of the files.

**UNCONTROLLED COPY**

STATUS **APPROVED DRAWING**

UNLESS OTHERWISE STATED

ALL DIMENSIONS IN mm DO NOT SCALE

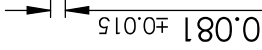
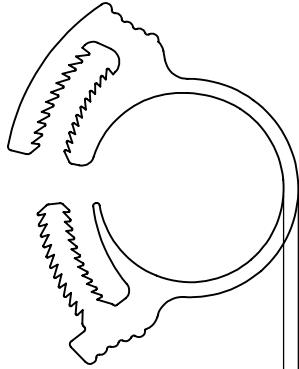
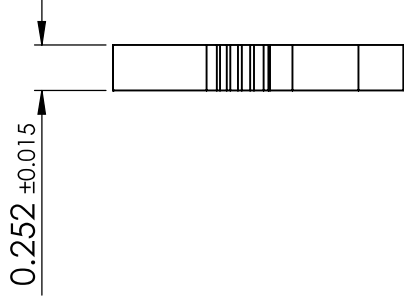
LINEAR TOLERANCE		THIRD ANGLE PROJECTION
SIZE	(0) (0.00)	
0-10	±0.15 ±0.10	
>10-30	±0.20 ±0.15	
>30-50	±0.30 ±0.20	
>50-100	±0.50 ±0.25	
>100-200	±1.5 ±0.80 ±0.40	
UNSPECIFIED RADII 0.25mm		ANGULAR TOLERANCE ±0.5 DEGREES
DRAFT ANGLE 0.5 DEGREES		
DIMENSIONS IN BRACKETS [ ] ARE		
>300-500 ±3.0 ±2.00 ±1.00		
>500 ±5.0 ±3.00 ±1.50		
DIMENSIONS IN BRACKETS [ ] ARE		
>300-500 ±3.0 ±2.00 ±1.00		
>500 ±5.0 ±3.00 ±1.50		

CREATE DATE	22.02.2023	MATERIAL	PA66
ITEM CODE	10221556	COLOR	BLACK
LEGACY NUMBER	22DGH00J	FINISH	-

TITLE: **HOSE & TUBING CLAMPS**  
**20.3 - 23.0 MM**

DWG. NO.	10221556	SCALE	1:1	SHEET	1 of 2	ISSUE	1
----------	----------	-------	-----	-------	--------	-------	---

CLAMPING RANGE  
0.799 - 0.906



© 2013 Essentra Components. All rights reserved.  
Registered in England, Company No. 547495.  
Registered Office: Essentra plc  
Langford Locks, Kidlington, Oxford, OX5 1HX

Condition of Sale can be found on our website: [essentra.com](http://essentra.com).  
Essentra Components does not warrant that the files will be error free and may create new versions ("Upgrades") at any time, which may correct such errors. Essentra Components has no obligation to notify you of such upgrades. Any upgraded file will be published to the website, when it becomes available.

You are not permitted to load any of the files on to a network server for the purposes of distribution to one or more other computer(s) on that network or to effect such distribution. Essentra Components shall not be liable for any loss or damage whatsoever or however caused, arising directly or indirectly from the use of the files.

UNCONTROLLED COPY

APPROVED DRAWING

UNLESS OTHERWISE STATED

ALL DIMENSIONS IN INCHES		DO NOT SCALE
LINEAR TOLERANCE		THIRD ANGLE PROJECTION
SIZE	(0.00) (0.000) (0.0000)	
0 - 0.394	±0.020 ±0.006 ±0.004	
>0.394 - 1.181	±0.020 ±0.008 ±0.006	
>1.181 - 1.969	±0.020 ±0.012 ±0.008	
>1.969 - 3.937	±0.031 ±0.020 ±0.010	
>3.937 - 7.874	±0.059 ±0.031 ±0.016	ANGULAR TOLERANCE ±0.5 DEGREES
>7.874 - 11.811	±0.079 ±0.047 ±0.031	UNSPECIFIED RADIUS 0.010 INCH DRAFT ANGLE 0.5 DEGREES
>11.811 - 19.685	±0.118 ±0.079 ±0.039	FINISH SYMBOLS FOR HOLE SURFACES FOR REFERENCE ONLY
>19.685	±0.197 ±0.118 ±0.059	

CREATE DATE	22.02.2023	MATERIAL	PA66
ITEM CODE	10221556	COLOR	BLACK
LEGACY NUMBER	22DGH00J	FINISH	-

TITLE:  
HOSE & TUBING CLAMPS  
20.3 - 23.0 MM

DWG. NO.	10221556	SCALE	1:1	SHEET	2 of 2	ISSUE	1
----------	----------	-------	-----	-------	--------	-------	---