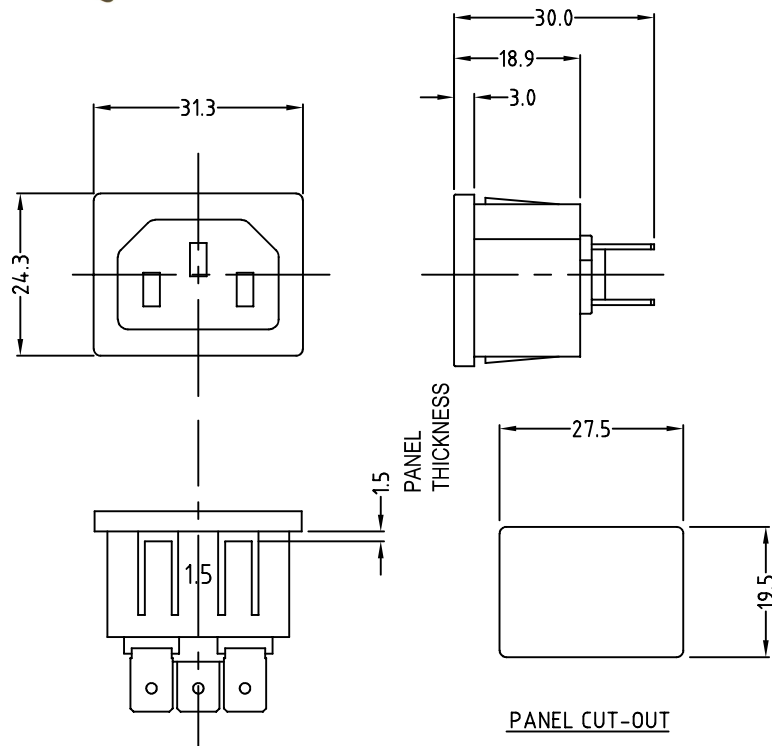


# CLIFF

## MS1X INLET SOCKET

Mains inlet socket, snap-in. For panel thickness 1.5mm max. 6.35mm Faston tags.



PART No. **CL19192RB**

STANDARD: IEC 60320 C14  
APPROVED: UL, S, D, N, FI, CCC, VDE  
RATED: 10A 250V AC / 15A 250V AC  
INSULATION RESISTANCE: 100M $\Omega$  500V DC / 1 minute.  
DIELECTRIC STRENGTH: 2000V AC / 1 minute.