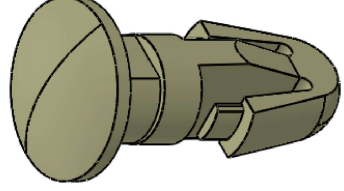
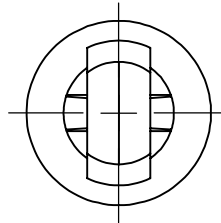
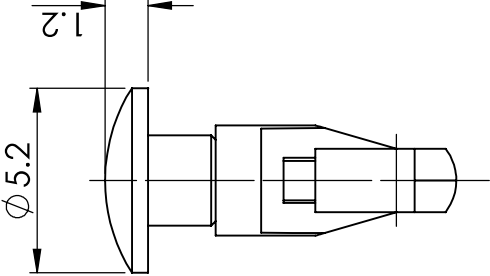
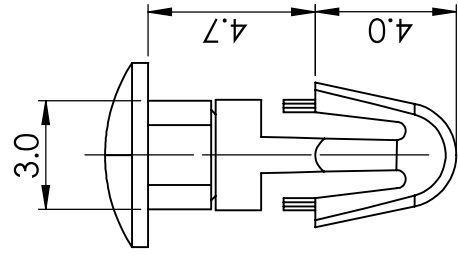


TO SNAP LOCK IN
HOLE
Ø 3.18



© 2013 Essentra Components. All rights reserved.
Registered in England, Company No. 547495.
Registered Office: Essentra plc
Langford Locks, Kidlington, Oxford, OX5 1HX

Condition of Sale can be found on our website: essentra.com.
Essentra Components does not warrant that the files will be error free and may create new versions ("Upgrades") at any time, which may correct such errors. Essentra Components has no obligation to notify you of such upgrades. Any upgraded file will be published to the website, when it becomes available.

You are not permitted to load any of the files on to a network server for the purposes of distribution to one or more other computer(s) on that network or to effect such distribution. Essentra Components shall not be liable for any loss or damage whatsoever or however caused, arising directly or indirectly from the use of the files.

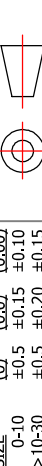
UNCONTROLLED COPY

APPROVED DRAWING

UNLESS OTHERWISE STATED

ALL DIMENSIONS IN mm

DO NOT SCALE



LINEAR TOLERANCE	THIRD ANGLE PROJECTION
SIZE (0) (0.00)	
0-10 ±0.5 ±0.15 ±0.10	
>10-30 ±0.5 ±0.20 ±0.15	
>30-50 ±0.5 ±0.30 ±0.20	
>50-100 ±0.8 ±0.50 ±0.25	
>100-200 ±1.5 ±0.80 ±0.40	
>200-300 ±2.0 ±1.20 ±0.80	
>300-500 ±3.0 ±2.00 ±1.00	
>500 ±5.0 ±3.00 ±1.50	

CREATE DATE	ORIG. SCALE
12.11.2022	5:1

ITEM CODE	MATERIAL
10171707	NYLON 6/6

LEGACY NUMBER	COLOUR / FINISH
SLPA125-187-01	NATURAL

TITLE:
PUSH-IN RIVET NYLON

DWG. NO.	SHEET	ISSUE
10171707	1 of 2	1

TO SNAP LOCK IN
HOLE
Ø 0.1252



© 2013 Essentra Components. All rights reserved.
Registered in England, Company No. 547495.
Registered Office: Essentra plc
Langford Locks, Kidlington, Oxford, OX5 1HX

Condition of Sale can be found on our website: essentra.com.

Essentra Components does not warrant that the files will be error free and may create new versions ("Upgrades") at any time, which may correct such errors. Essentra Components has no obligation to notify you of such upgrades. Any upgraded file will be published to the website, when it becomes available.

You are not permitted to load any of the files on to a network server for the purposes of distribution to one or more other computer(s) on that network or to effect such distribution. Essentra Components shall not be liable for any loss or damage whatsoever or however caused, arising directly or indirectly from the use of the files.

UNCONTROLLED COPY

STATUS

APPROVED DRAWING

UNLESS OTHERWISE STATED

ALL DIMENSIONS IN INCHES		DO NOT SCALE	
LINEAR TOLERANCE		THIRD ANGLE PROJECTION	
SIZE	(0.001) (0.0000)	(0.0000)	(0.0000)
0 - 0.394	±0.020 ±0.006 ±0.004	±0.004	±0.004
>0.394 - 1.181	±0.020 ±0.008 ±0.006	±0.006	±0.006
>1.181 - 1.969	±0.020 ±0.012 ±0.008	±0.008	±0.008
>1.969 - 3.937	±0.031 ±0.020 ±0.010	±0.010	±0.010
>3.937 - 7.874	±0.059 ±0.031 ±0.016	±0.016	±0.016
>7.874 - 11.811	±0.079 ±0.047 ±0.031	±0.031	±0.031
>11.811 - 19.685	±0.118 ±0.079 ±0.039	±0.039	±0.039
>19.685	±0.197 ±0.118 ±0.059	±0.059	±0.059
CREATE DATE	12.11.2022	ORG. SCALE	5:1
ITEM CODE	10171707	MATERIAL	NYLON 6/6
LEGACY NUMBER	SLPA125-187-01	COLOUR / FINISH	NATURAL
TITLE: PUSH-IN RIVET NYLON			
DWG. NO.	10171707	SHEET	2 of 2
		ISSUE	1

