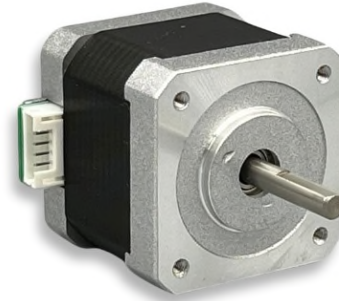




Our Hybrid Stepper Motors are a precise motion control solution providing excellent holding torque. They come in various sizes and step angles. With endless performance combinations, we have a fully tailored solution for you.



Contact Us for alternative solutions!

Specifications	
Motor Type:	Hybrid Stepper
Step Angle:	1.8°
Rated Voltage:	12 VDC
Number of Phases:	2
Rated Current/Phase:	0.4 A
Number of Leads:	6
Phase Inductance:	30 mH (±20%)
Holding Torque:	3.4 kg-cm
Phase Resistance:	30 Ω (±10%)
Induction Class:	B
Motor Weight:	0.24 kg
Termination:	Connector: JST S6B-PH-K

