

PD-8008-SM Power Divider – 20 MHz to 3000 MHz Evaluation Board



I.F. Engineering now has available an Evaluation board for our PD-8008-SM Power Divider. Shipped with a PD-8008-SM part soldered in place with SMA connectors to each port the board allow for accurate RF measurements.

The PCB material used is Taconic RF-60A for optimum RF performance. All traces are equal in length with matching trace widths and spacing to insure repeatable performance. A thru calibration trace is also provided on the board.

PD-8008-SM PCB footprint drawings, S-Parameter files, and 3d CAD models are available at your request.

If your application requires a unique footprint I.F. Engineering can recommend a solution.

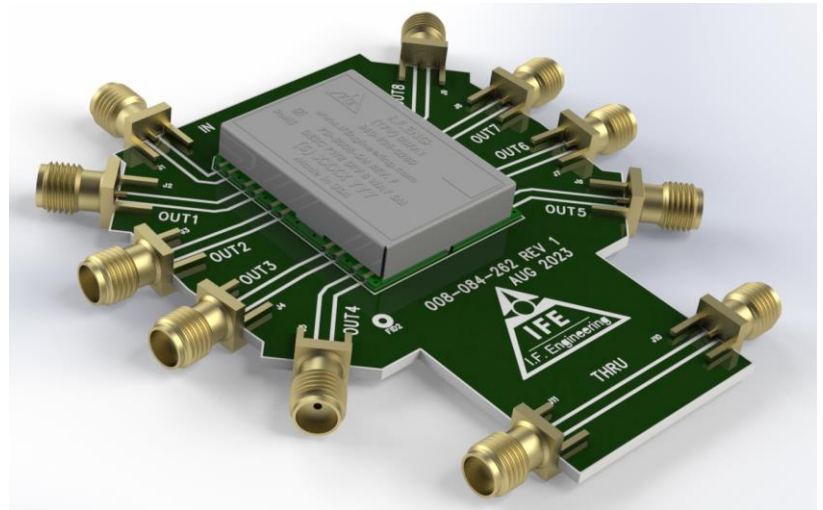
Other surface mount Power Dividers are offered for 2-Way, 4-Way, and 16-Way packages.

The measurements shown in the plots were actual measured performance.

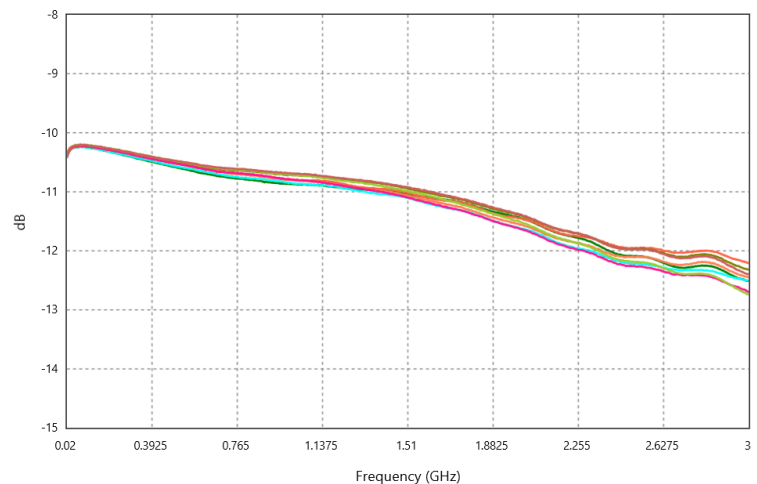
More detailed specifications for the PD-8008-SM are provided on page 2.

Ask for a quote today. Soon to be available for purchase on Digikey .

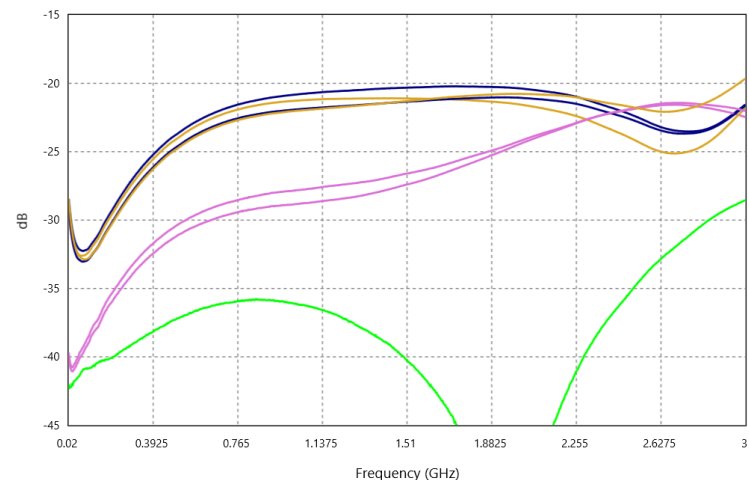
PD-8008-SM-EVAL



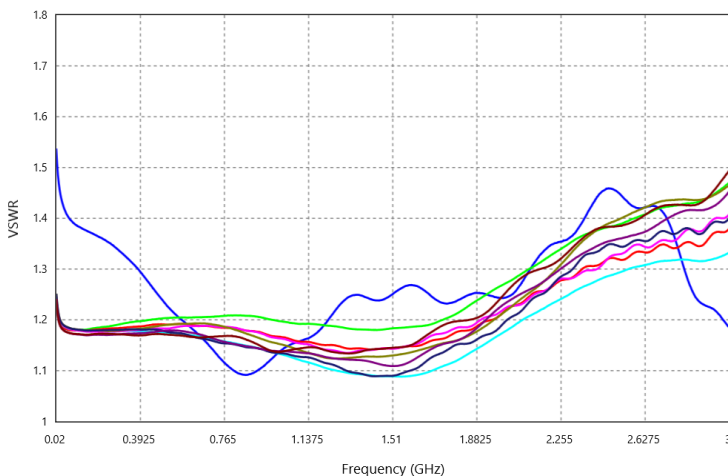
PD-8008-SM-EVAL INSERTION LOSS



PD-8008-SM-EVAL OUT-OUT ISOLATION



PD-8008-SM-EVAL IN / OUT VSWR



For more information or to request a quotation contact:
Telephone (860) 935-0280 FAX (508) 943-0400
Email sales@ifengineering.com

I.F. Engineering Corp
3 Foshay Road
Dudley, MA 01571

8/28/23



Power Divider – 20 MHz to 3000 MHz



PD-8008-SM

8 Way Power Divider

The PD-8008-SM is a great complement to I.F. Engineering Corp's power divider lineup.

The wideband operation covers 20 MHz to 3000 MHz frequency range using a compact surface mount architecture. This is ideal for upgrading applications that need to include UHF Band, L band, S band, and C band in a limited amount of available space for mobile, aircraft, and drone applications along with being light weight.

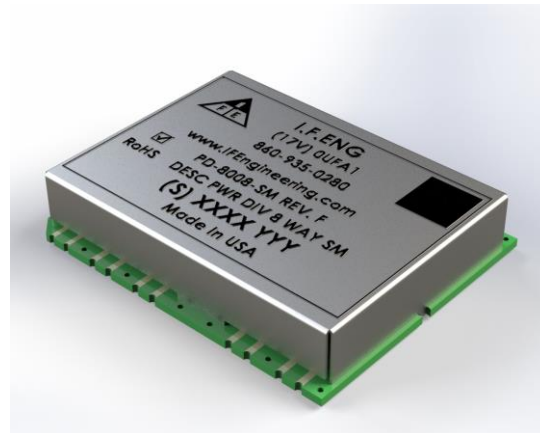
PCB footprint drawings, and 3d Cad models are available.

If your application requires a unique footprint I.F. Engineering can recommend a solution.

Ask for an outline drawing and quote today.

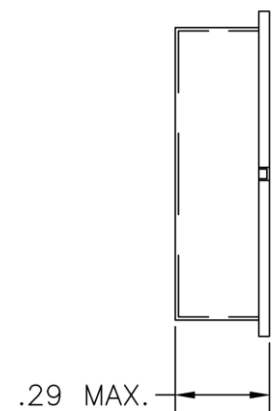
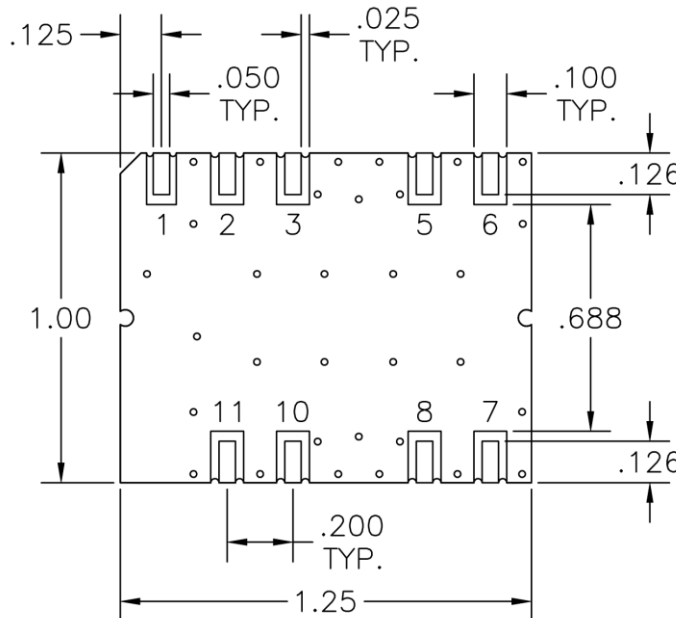
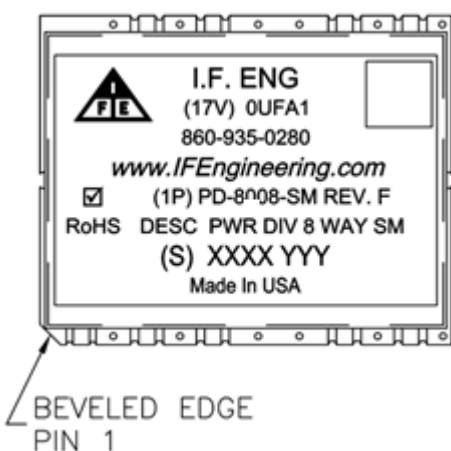
Other surface mount Power Dividers are offered for 2-Way, 4-Way, and 16-Way packages.

Tape and Reel packaging available.



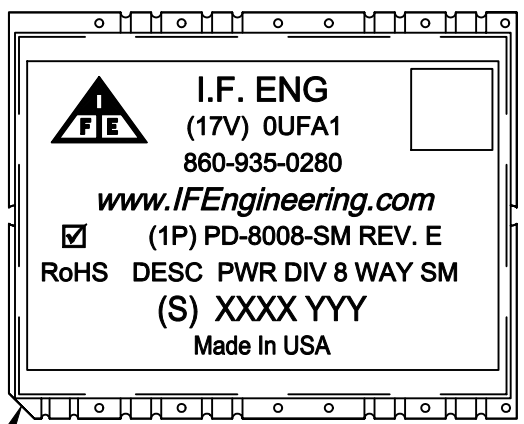
Specifications

Frequency Range (MHz)	20 - 3000
Insertion Loss Max (dB)	4.0
Isolation (dB)	15 Min
Input VSWR	1.8:1
Output VSWR	1.6:1
Impedance (Ohms)	50
Size (in.)	1.25 L x 1.0 W x 0.29 H
Weight	.18 oz.
Temp Range	0 to +50° C

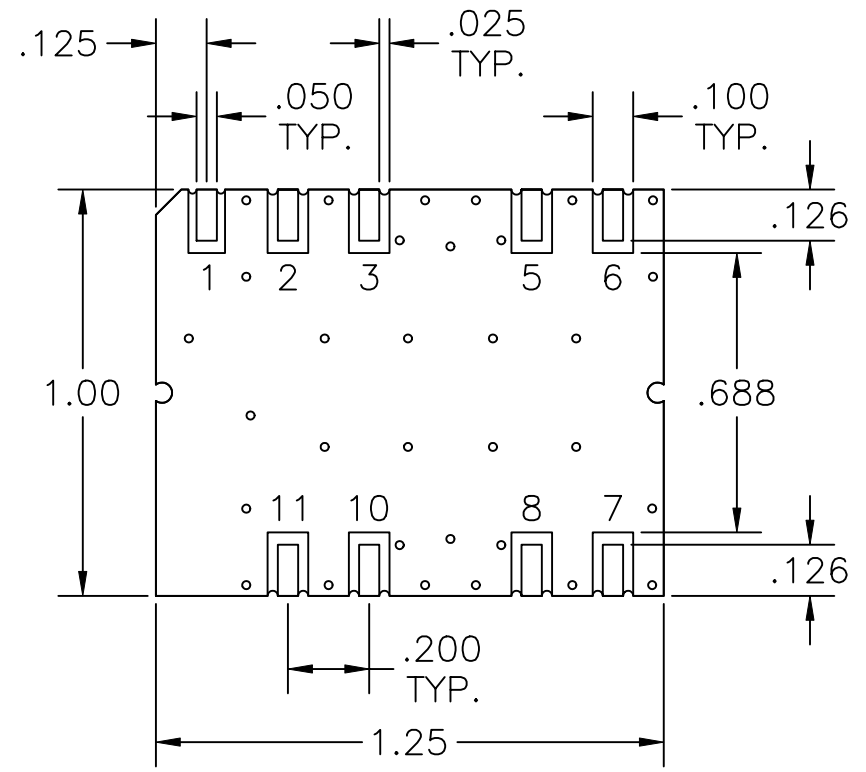
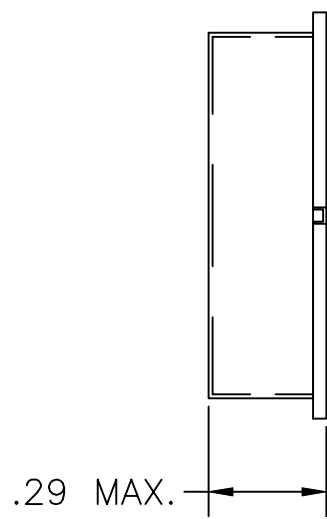


PROPRIETARY DATA OF IF Engineering Corp.
 THIS DOCUMENT CONTAINS PROPRIETARY INFORMATION.
 ANY REPRODUCTION, DISCLOSURE, OR USE OF
 ITS CONTENTS IS EXPRESSLY PROHIBITED EXCEPT AS
 AUTHORIZED BY IF Engineering Corp.

REVISION			
LTR.	DESCRIPTION	DATE	APPVL.
A	Corr Specs	8/02	lcf
B	Corr DIMENSION	6-5-03	
C	UPDATED FORMAT .050 DIM. WAS .040 .025 DIM. WAS .030	6/6/08	MJD
D	CHANGED PER ECN 1016001	4/26/10	MJD
E	ECO #1635006	9/6/16	MJD



BEVELED EDGE
 PIN 1



PORT DESIGNATIONS	
PORT 1	RF INPUT (SUM)
PORT 2	RF OUT
PORT 3	RF OUT
PORT 4	GND
PORT 5	RF OUT
PORT 6	RF OUT
PORT 7	RF OUT
PORT 8	RF OUT
PORT 9	GND
PORT 10	RF OUT
PORT 11	RF OUT
PORT 12	GND

ELECTRICAL SPECIFICATION EIGHT-WAY POWER DIVIDER	
FREQUENCY RANGE (MHZ)	20-3000
ISOLATION (dB) MIN.	15
INSERTION LOSS (dB) MAX.	4.0
AMPLITUDE BAL. (dB) MAX.	±0.4
VSWR MAX.	
IN	1.8:1
OUT	1.6:1
IMPEDANCE (OHMS) NOM.	50
TEMPERATURE RANGE (°C)	0 TO +50

NOTE:
 SPECIFICATION SUBJECT TO CHANGE WITHOUT NOTICE.

**RoHS
 Compliant**

UNLESS OTHERWISE SPECIFIED DRAWING PRACTICES PER ASME Y14.100		DRAWN CL	DATE 6/4/02
TOLERANCES .XX ±.01	ANGLES ±1/2° .XXX ±.005	ENGRG APPD	DATE
SURFACE ROUGHNESS 63 ✓	REMOVE BURRS SHARP EDGES	MFG APPD	DATE
		QA APPD	DATE
		RELEASED	DATE

IFE ENGINEERING
 3 FOSHAY ROAD, DUDLEY MA 01571

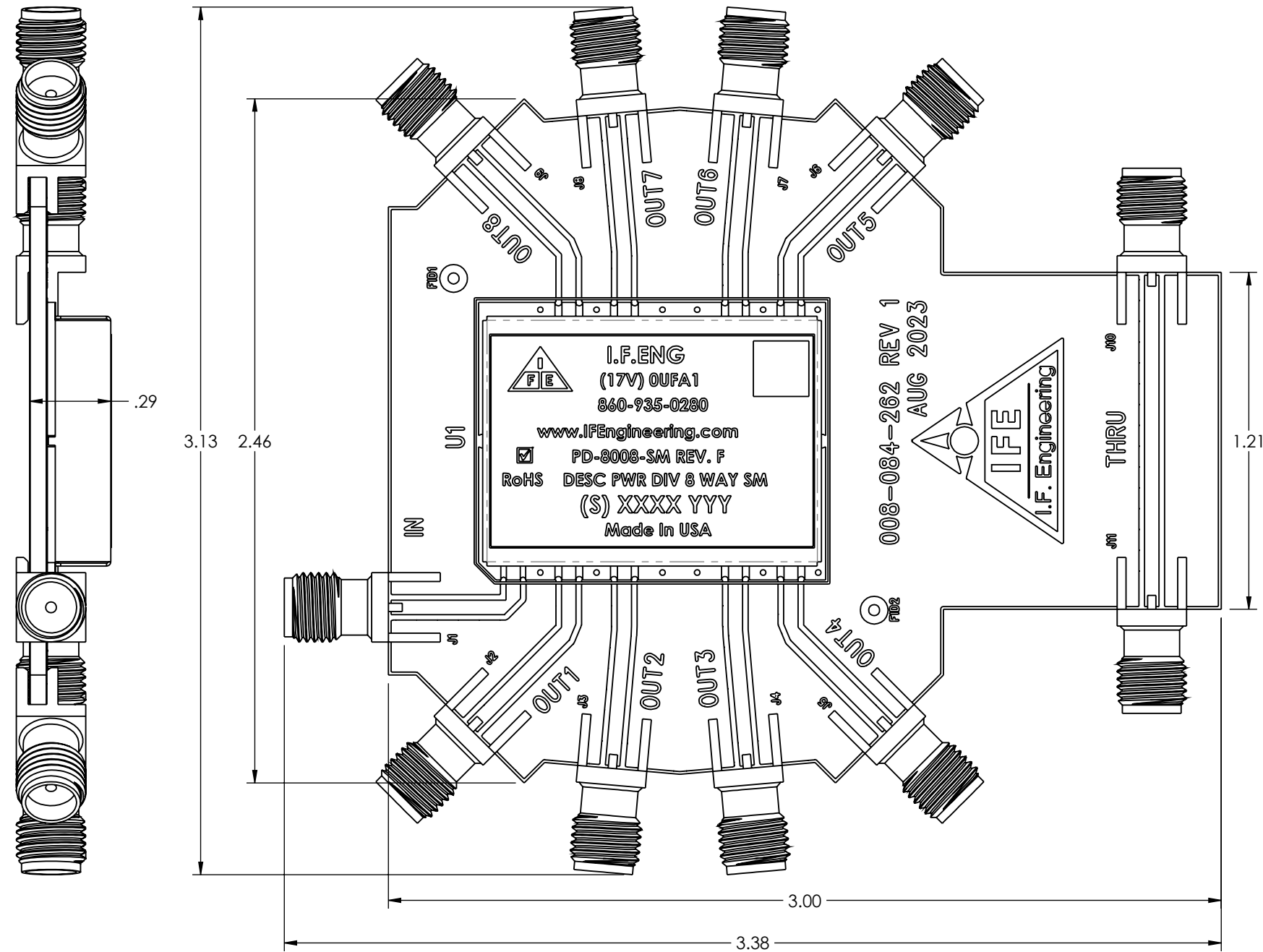
TITLE
**OUTLINE DRAWING
 PD-8008-SM**

SIZE B	CODE IDENT NO. 0UFA1	DRAWING NO. 008-084-181	REV. E
SCALE N/A		SHEET 1 OF 1	

THIS DOCUMENT CONTAINS PROPRIETARY INFORMATION.
 ANY REPRODUCTION, DISCLOSURE, OR USE OF
 ITS CONTENTS IS EXPRESSLY PROHIBITED EXCEPT AS
 AUTHORIZED BY I.F. Engineering Corp

REVISIONS

REV.	DESCRIPTION	DATE	APPROVED
1	PRELIMINARY	08/16/2023	DR



DRAWN	DATE
ENG APPD	DATE
MFG APPD	DATE
QA APPD	DATE
RELEASED	DATE

UNLESS OTHERWISE SPECIFIED
 DIMENSIONS MEASURED IN INCHES
 DRAWING PRACTICES PER ASME Y14.5

TOLERANCES ANGLES $\pm 1/2^\circ$
 .XX $\pm .01$.XXX $\pm .005$

SURFACE ROUGHNESS $63 \checkmark$ REMOVE BURRS
 SHARP EDGES

MATERIAL:

FINISH:

IFE ENGINEERING
 3 FOSHAY ROAD, DUDLEY MA 01571

TITLE:
OUTLINE DRAWING
PD-8008-SM-EVAL

SIZE	CODE IDENT NO.	DRAWING NO.	REV.
B	OUFA1	008-084-182	1

SCALE: 2:1 SHEET: 1 of 1

