

Heartland® Series

POLYCARBONATE ENCLOSURES

The most innovative, durable and reliable polycarbonate enclosures available!



attabox.com

 **AttaBox**



AttaBox[®] Heartland[®] Enclosures

are ideally suited for:



RUGGED APPLICATIONS REQUIRING ENCLOSURE STRENGTH

Over 40% stronger than the competition*, AttaBox's thick, robust side walls eliminate flexing. Heavy-duty and durable, they are produced from a polycarbonate material formulation which provides high-impact resistance and dimensional stability. Our enclosures are popular and reliable in industrial and manufacturing applications within continuously demanding environments.

*Results of independent testing conducted with off-the-shelf competitive polycarbonate enclosures

APPLICATIONS WITH LIKELY NEED FOR IMPACT RESISTANCE

Metal enclosures are vulnerable to denting upon impact, which, along with aesthetic concerns, can compromise the integrity of the seal that protects everything housed within the enclosure. Although AttaBox polycarbonate has a lighter weight than other materials, it boasts a higher impact resistance.



APPLICATIONS REQUIRING CORROSION RESISTANCE

AttaBox polycarbonate enclosures are available with full non-metallic or stainless steel cover latches and full non-metallic hinges that don't penetrate the enclosure and meet NEMA Type 4X requirements, which specifies an increased level of protection from corrosion. Because of this, we meet the demands of diverse industries from oil and gas to carwashes to marine environments.

APPLICATIONS WHERE INSTALLATION AND LABOR ARE CHALLENGES

Polycarbonate, compared with metal enclosures is lightweight, making it easier and quicker to install; thereby being of value in overall cost reduction.



APPLICATIONS WHERE UV RESISTANCE IS IMPORTANT

Because of natural resistance to UV degradation, polycarbonate enclosures can weather the passage of time even in harsh exterior applications. AttaBox polycarbonate enclosures carry an f1 rating for outdoor use per UL 746C.

APPLICATIONS WHERE EASE OF MODIFICATIONS IS IMPORTANT

AttaBox polycarbonate enclosures are easy to modify using standard tools for cutting holes, windows, vents, and drains. They cut cleanly without dust and resist delamination. Our ModRight program offers value-add factory design, engineering, and modification to help customers solve demanding product application challenges.



APPLICATIONS USING WIRELESS TECHNOLOGY

AttaBox polycarbonate enclosures are ideal for protecting wireless technology because they allow wireless and radio frequency signals to pass unobstructed through the enclosure. This allows you to have the antennas inside of the enclosure. Additionally, there is the option to block EMI/RFI frequencies if needed, giving you more flexibility than metal enclosures.

AttaBox[®] Heartland[®] Enclosures

AttaBox[®] Heartland[®] Enclosures are designed to be used in a variety of outdoor or indoor applications. They provide superior protection against rain, sleet, snow, splashing water, hose directed water, submersion, sun/uv and flames.



Superior Protection Against:



RAIN, SLEET
& SNOW



SPLASHING &
HOSE DIRECTED
WATER



SUBMERSION



SUN/UV



FLAMES

INNOVATIONS & FEATURES:

- One Enclosure, One Solution, One Price! Enclosure can be configured as hinged with screw cover or hinged with latched cover
- Fully nonmetallic hinge, does not penetrate inside enclosure
- Thick, robust side wall construction eliminates side wall flexing
- Built in DIN Rail mounting embosses in the back of the enclosure
- Capability to add side panels, DIN rails or instruments
- Innovative Heartland SL low-profile enclosures are ideal for equipment with minimal depth and for wireless communications applications
- Sliding T-Nut allows for infinite panel adjustment back to front
- Latch options – fully non-metallic or stainless steel (see Accessories)
- Clear or Opaque cover options
- Multi-directional mounting feet or flange options allow mounting flexibility
- Aluminum back panel and swing out panel mounting options
- Industry leading size range: 6" x 6" to 24" x 24"
- Compatible with AttaBox SolarShield HMI Cover

MATERIALS & PERFORMANCE:

- Performance: -40°F to +248°F (-40°C to +120°C)
- UL 94 Flame Rating – 5VA (highest flame resistance)
- UL's best rating, Outdoor Exposure, an "f1" per UL 746C (resin has passed tests for UV exposure and water immersion)

RATINGS & LISTINGS:

- cULus per file #E319779 Type 1, 3R, 4, 4X, 6P*, 12
- UL50, UL50e, UL508A
- IEC 60529: UL Listed per file #E362920 IP66, IP68*
- Certifications: cULus, CE, REACH, and RoHS

*Restrictions apply. Consult factory for more information.



AttaBox® Innovative Features



Industrial Control Enclosure

One box, one solution, hinged/latched and screw cover type

Full non-metallic hinge, does not penetrate enclosure

Broad size range: 6" x 6" to 24" x 24"

Clear and opaque cover styles available

Integrated locking clasp

Easy to remove door

Thick, robust sidewall and base construction prevents flexing of walls

Built-in DIN Rail mounting embosses

Full non-metallic or stainless steel cover latches

Robotically-applied foam-in-place gaskets

T-Channel and Slot Nut design allows for infinite adjustment of panels



UL Listed as Industrial Control Enclosure

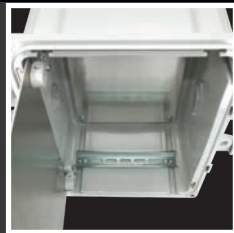
Available Modifications:

- Custom Holes/Cutouts
- Silk Screening/Digital Printing
- Custom Colors



UL 94 Flame Rating – 5VA

- Heartland® Enclosures provide the highest (most flame retardent) UL 94 rating available.



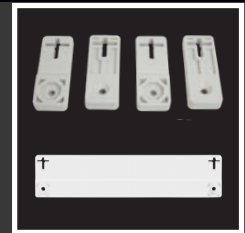
Flexible Options

- Increases usable space
- Provides more mounting options
 - DIN Rails
 - Back and Side Panel options
 - Mounting embosses in back
 - Optional Weight Distribution Shelf



Panel Systems

- Sub-panel mounting solution
 - Revolutionary design
 - Variable height mounting
 - Panel locks into open position
 - Mounting holes are standard JIC



Mounting Solutions

- Multi-directional mounting feet or NEW Mounting Flange included as means of attachment

SELECT. MODIFY. DELIVER.

SelectRight™ Program

AttaBox's extensive range of standard polycarbonate enclosures, panels, accessories, and other material options gives you the flexibility to select exactly the right non-metallic enclosures to meet the specific demands of your applications.

- Broad selection of standard, configurable, off-the-shelf, corrosion-resistant, non-metallic enclosures to meet your applications.
- Selection of options from available products to meet specification, reduce lead time, and optimize initial costs.
- Product selections ready to use and available now.

ModRight™ Program

AttaBox's ModRight Program is designed to support you in very uncommon or complex applications. From the basic product through all of its custom/modified required changes, to the moment it arrives on your doorstep for installation into your application, AttaBox ModRight offers standard and custom assistance for your every need. To receive a quotation or further information, visit www.attabox.com/products/modright.

Modifications can be mixed and matched in an endless number of combinations. They can take the form of:

- Custom cutouts/holes
- Silk screening
- Digital printing
- EMI/RFI shielding
- Custom mold-in colors
- Other special requests

DeliverRight™ Program

DeliverRight provides fast service and delivery of products ready to use when and where you need them. Value-add options are available to improve your productivity including direct shipment, bulk packaging, kitting, and custom labeling.

- Ensures you customer-first service, supply chain, and on-time delivery.
- A trusted partnership approach from consultation and quotation, to packaging and delivery.
- U.S. based manufacturing plus dedicated points of contact help manage orders and delivery.



Enclosures and Panels

HEARTLAND® ENCLOSURE WITH NON-METALLIC LATCHES



BACK PANEL, FLANGE, AND SWING PANEL KIT



ENCLOSURE SIZE	OPAQUE COVER W/ MOUNTING FEET PART #	CLEAR COVER W/ MOUNTING FEET PART #	OPAQUE COVER W/ MOUNTING FLANGE PART #	CLEAR COVER W/ MOUNTING FLANGE PART #	BACK PANEL PART #	SWING KIT PART #
6 x 6 x 4	AH664	AH664C	AHF664	AHF664C	BP66**	AH66SPK
8 x 6 x 4	AH864	AH864C	AHF864	AHF864C	BP86**	AH86SPK
8 x 8 x 4	AH884	AH884C	AHF884	AHF884C	BP88**	AH88SPK
10 x 8 x 4	AH1084	AH1084C	AHF1084	AHF1084C	BP108**	AH108SPK
10 x 8 x 6	AH1086	AH1086C	AHF1086	AHF1086C	BP108**	AH108SPK
10 x 10 x 6	AH10106	AH10106C	AHF10106	AHF10106C	BP1010**	AH1010SPK
12 x 10 x 6	AH12106	AH12106C	AHF12106	AHF12106C	BP1210**	AH1210SPK
14 x 12 x 6	AH14126	AH14126C	AHF14126	AHF14126C	BP1412**	AH1412SPK
16 x 14 x 8	AH16148	AH16148C	AHF16148	AHF16148C	BP1614**	AH1614SPK
18 x 16 x 4	AH18164*	AH18164C*	n/a	n/a	BP1816**	n/a
18 x 16 x 10	AH181610	AH181610C	AHF181610	AHF181610C	BP1816**	AH1816SPK
20 x 16 x 8	AH20168	AH20168C	AHF20168	AHF20168C	BP2016**	AH2016SPK
24 x 24 x 10	n/a	n/a	AH242410*	AH242410C*	BP2424**	AH2424SPK

*Feature mounting feet or flange molded into the box rather than installed separately.

**Add suffix for material desired: A = aluminum, CS = carbon steel, ABS = ABS material

Enclosures and Panels

HEARTLAND® ENCLOSURE WITH STAINLESS STEEL LATCHES



BACK PANEL AND SWING PANEL KIT



ENCLOSURE SIZE	OPAQUE COVER W/MOUNTING FEET PART #	CLEAR COVER W/MOUNTING FEET PART #	BACK PANEL PART #	SWING KIT PART #
6 x 6 x 4	AH664SS	AH664CSS	BP66*	AH66SPK
8 x 6 x 4	AH864SS	AH864CSS	BP86*	AH86SPK
8 x 8 x 4	AH884SS	AH884CSS	BP88*	AH88SPK
10 x 8 x 4	AH1084SS	AH1084CSS	BP108*	AH108SPK
10 x 8 x 6	AH1086SS	AH1086CSS	BP108*	AH108SPK
10 x 10 x 6	AH10106SS	AH10106CSS	BP1010*	AH1010SPK
12 x 10 x 6	AH12106SS	AH12106CSS	BP1210*	AH1210SPK
14 x 12 x 6	AH14126SS	AH14126CSS	BP1412*	AH1412SPK
16 x 14 x 8	AH16148SS	AH16148CSS	BP1614*	AH1614SPK
18 x 16 x 4	AH18164SS	AH18164CSS	BP1816*	n/a
18 x 16 x 10	AH181610SS	AH181610CSS	BP1816*	AH1816SPK
20 x 16 x 8	AH20168SS	AH20168CSS	BP2016*	AH2016SPK
24 x 24 x 10	AH242410SS	AH242410CSS	BP2424*	AH2424SPK

*Add suffix for material desired: A = aluminum, CS = carbon steel, ABS = ABS material

**Stainless Steel Latch products are available as standard with mounting feet included.

To order with a flange, change the AH prefix to AHF.

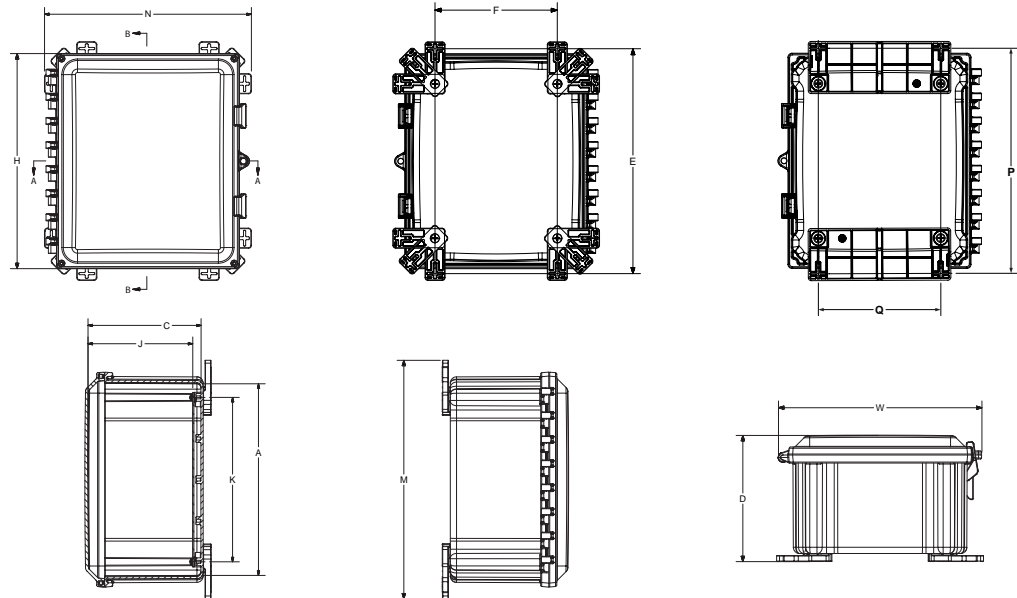
Heartland® Series Dimensions

SCREW SIZE AND TORQUE TABLE

PRODUCT SIZES	BACK PANEL SCREW SIZE	BACK PANEL RECOMMENDED TORQUE	COVER SCREW SIZE	COVER SCREW RECOMMENDED TORQUE	MOUNTING FOOT SCREW SIZE	MOUNTING FOOT SCREW RECOMMENDED TORQUE	RECOMMENDED MOUNTING FLANGE TORQUE
ALL	#10-32 x 3/8	16-20 in-lbs	#10-32 x 5/8	20-24 in-lbs	1/4-20 x 1/2	10-14 in-lbs	25-30 in-lbs

NOTES:

- Catalog drawing is for reference only
- See actual part drawing for specific design
- Different sizes may have 1, 2, 4, or 6 latches
- J dimension is with back panel installed
- Back panel is sold separately



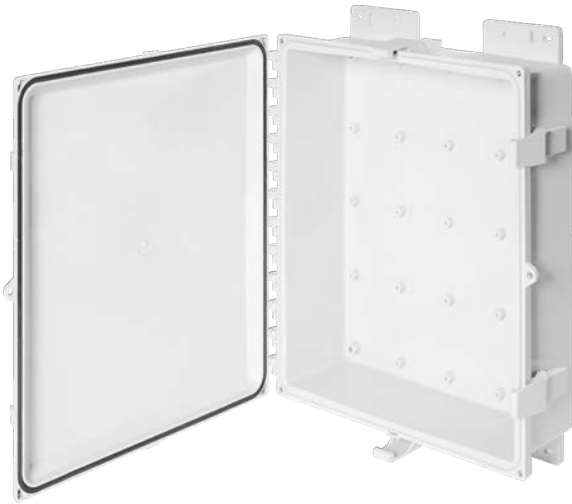
ENCLOSURE DIMENSIONS TABLE

SIZE ID NUMBER	OVERALL H x W x D	INSIDE A x B x C	MOUNTING FEET HOR. E x F	MOUNTING FEET VER. E x F	MOUNTING FEET 45° E x F	FLANGE P x Q	J	K	L	M	N
AH664 AH664C	7.41 x 8.68 x 5.84 (188 x 223 x 148)	5.94 x 5.94 x 5.02 (151 x 151 x 127)	3.64 x 8.40 (93 x 213)	8.03 x 3.64 (204 x 93)	6.75 x 6.74 (171 x 171)	8.03 x 3.64 (204 x 93)	4.50 (114)	4.25 (108)	4.25 (108)	8.89 (226)	8.89 (226)
AH864 AH864C	9.41 x 8.68 x 5.86 (239 x 223 x 149)	7.97 x 5.97 x 5.07 (202 x 152 x 129)	5.64 x 8.04 (143 x 213)	10.03 x 3.64 (255 x 93)	8.76 x 6.75 (223 x 171)	10.03 x 3.64 (255 x 93)	4.56 (116)	6.25 (159)	4.25 (108)	10.89 (277)	8.89 (226)
AH884 AH884C	9.41 x 10.68 x 5.86 (239 x 271 x 149)	7.97 x 7.97 x 5.03 (202 x 202 x 128)	5.63 x 10.03 (143 x 255)	10.04 x 5.63 (255 x 143)	8.74 x 8.78 (222 x 223)	10.04 x 5.63 (255 x 143)	4.53 (115)	6.25 (159)	6.25 (159)	10.88 (277)	10.88 (277)
AH1084 AH1084C	11.41 x 10.68 x 6.36 (290 x 271 x 161)	9.96 x 7.96 x 5.57 (253 x 202 x 142)	7.64 x 10.04 (194 x 255)	12.03 x 5.64 (306 x 143)	10.76 x 8.75 (273 x 222)	12.03 x 5.64 (306 x 143)	5.05 (128)	8.25 (210)	6.25 (159)	12.89 (327)	10.89 (277)
AH1086 AH1096C	11.41 x 10.68 x 7.89 (209 x 271 x 200)	9.95 x 7.95 x 7.06 (253 x 202 x 179)	7.63 x 10.03 (194 x 255)	12.04 x 5.63 (306 x 143)	10.76 x 8.75 (273 x 222)	12.04 x 5.63 (306 x 143)	6.54 (166)	8.25 (210)	6.25 (159)	12.88 (327)	10.88 (277)
AH10106 AH10106C	11.41 x 12.68 x 6.97 (209 x 322 x 177)	9.95 x 9.95 x 6.15 (253 x 253 x 156)	7.62 x 12.03 (194 x 306)	12.04 x 7.63 (306 x 194)	10.76 x 10.75 (273 x 273)	12.04 x 7.63 (306 x 194)	5.65 (144)	8.25 (210)	8.25 (210)	12.88 (327)	12.88 (327)
AH12106 AH12106C	13.40 x 12.68 x 7.86 (340 x 322 x 200)	11.95 x 9.95 x 7.07 (304 x 253 x 180)	9.64 x 12.04 (245 x 306)	14.03 x 7.64 (357 x 194)	12.76 x 10.75 (324 x 273)	14.03 x 7.64 (357 x 194)	6.56 (167)	10.25 (260)	8.25 (210)	14.89 (378)	12.89 (327)
AH14126 AH14126C	15.40 x 14.68 x 7.86 (391 x 373 x 200)	13.95 x 11.95 x 7.07 (354 x 304 x 180)	11.64 x 14.04 (296 x 357)	16.03 x 9.64 (407 x 245)	14.76 x 12.75 (375 x 324)	16.03 x 9.64 (407 x 245)	6.56 (167)	12.25 (311)	10.25 (260)	16.89 (429)	14.89 (378)
AH16148 AH16148C	17.65 x 16.68 x 9.98 (448 x 424 x 253)	15.93 x 13.93 x 9.20 (405 x 354 x 234)	13.64 x 16.04 (347 x 407)	18.03 x 11.64 (458 x 296)	16.76 x 14.75 (426 x 375)	18.03 x 11.64 (458 x 296)	8.68 (220)	14.25 (362)	12.25 (311)	18.89 (480)	16.89 (429)
AH181610 AH181610C	19.41 x 18.68 x 11.90 (493 x 474 x 302)	17.83 x 15.83 x 11.08 (453 x 402 x 281)	15.64 x 18.04 (397 x 458)	20.03 x 13.64 (509 x 347)	18.75 x 16.74 (476 x 425)	20.03 x 13.64 (509 x 347)	10.56 (268)	16.25 (413)	14.25 (362)	20.89 (531)	18.89 (480)
AH18164* AH18164C*	19.41 x 18.68 x 5.41 (493 x 474 x 137)	18.16 x 16.16 x 5.08 (4.61 x 410 x 129)	n/a	20.50 x 13.50 (521 x 343)	n/a	n/a	4.56 (116)	16.25 (413)	14.25 (362)	21.75 (552)	n/a
AH20168 AH20168C	21.41 x 18.68 x 9.97 (544 x 474 x 253)	19.86 x 15.86 x 9.15 (504 x 403 x 232)	18.75 x 19.17 (476 x 487)	22.05 x 14.75 (560 x 375)	21.91 x 17.87 (557 x 454)	22.05 x 14.75 (560 x 375)	8.65 (220)	18.25 (464)	14.25 (362)	24.00 (610)	20.02 (509)
AH242410* AH242410C*	25.41 x 26.68 x 11.41 (645 x 678 x 290)	23.91 x 23.91 x 11.88 (607 x 607 x 302)	n/a	n/a	n/a	25.69 x 18.00 (653 x 457)	10.56 (268)	22.25 (565)	22.25 (565)	26.69 (678)	21.86 (555)

All measurements are in inches; items in parentheses are in millimeters.

*Feature mounting feet or flange molded into the box rather than installed separately.

Heartland® SL™ Series Low-Profile Enclosures



Back panels available in ABS material to optimize wireless signal transmission



Optional ABS back panel



VALUE	FEATURES	BENEFITS
Optimized Depth	→ Shallow depth design with industry standard height/width eliminates unneeded depth and is ideal for low profile applications	→ Saves space in installation and reduces material cost
Robust, Smooth Side Walls	→ Increased fitting mounting space and an aesthetically pleasing appearance	→ Long dependable product life → Increases the quantity of fittings which can be installed
Aesthetics	→ Low profile design meets customer aesthetic requirements when mounting in visible areas on or inside buildings.	→ Improved appearance provides a nice clean look for brand promotion
Flexibility	→ Built-in DIN Rail mounting embosses in the back of the enclosure offers an alternative to back panel mounting → Molded-in mounting feet with added mounting cross → Available in Opaque or Clear Covers to suit customer application	→ DIN Rail embosses save time and back panel cost → Reduces need for costly on-site modification or adjustments

ENCLOSURE SIZE	OPAQUE COVER CATALOG #	CLEAR COVER CATALOG #	OPAQUE COVER WITH STAINLESS STEEL LATCHES CATALOG #	CLEAR COVER WITH STAINLESS STEEL LATCHES CATALOG #	BACK PANEL CATALOG #
10 x 8 x 3	AH1083	AH1083CC	AH1083SS	AH1083CCSS	BP108*
12 x 10 x 4	AH12104	AH12104CC	AH12104SS	AH12104CCSS	BP1210*
14 x 12 x 4	AH14124	AH14124CC	AH14124SS	AH14124CCSS	BP1412*
16 x 14 x 4	AH16144	AH16144CC	AH16144SS	AH16144CCSS	BP1614*
18 x 16 x 4	AH18164	AH18164CC	AH18164SS	AH18164CCSS	BP1816*
20 x 16 x 4	AH20164	AH20164CC	AH20164SS	AH20164CCSS	BPJ2016*
24 x 24 x 6	AH24246	AH24246CC	AH24246SS	AH24246CCSS	BP2424PC*

*Add suffix for material desired: A = aluminum, CS = carbon steel, ABS = ABS material

Heartland® Series Accessories

DIN Rail Kits

DRK DIN Rail Kits

CATALOG #	FITS
AH6DRK	6"
AH8DRK	8"
AH10DRK	10"
AH12DRK	12"
AH14DRK	14"
AH16DRK	16"
AH18DRK	18"
AH20DRK	20"
AH24DRK	24"

Kit includes DIN rail that fits size indicated, plus two custom slot nuts and two screws for mounting to enclosure.



14" DRK DIN RAIL KIT

DR DIN Rail Kits

CATALOG #	FITS
AH6DR	6"
AH8DR	8"
AH10DR	10"
AH12DR	12"
AH14DR	14"
AH16DR	16"
AH18DR	18"
AH20DR	20"
AH24DR	24"

Kit includes a DIN rail that fits size indicated, plus two trilobular screws for mounting to back of enclosure.



14" DR DIN RAIL KIT

Heartland® Series Interior Mounting Solutions

Weight Distribution Shelves

- APPLICATIONS:**
- This innovative weight distribution shelf provides an extremely rugged support system when adding heavy equipment in polycarbonate enclosures.
 - Ideal for support when adding a power supply, battery, or heavy equipment.

- BENEFITS:**
- Improves installation quality by reducing potential for bottom wall deflection
 - Reduces risk of enclosure and equipment maintenance and replacement costs due to damage from added weight

- INNOVATIVE FEATURES:**
- Aluminum shelf supported by enclosure side walls reduces risk of deflection of the enclosure bottom wall when subjected to increased weight load
 - Available in 7 SKUs designed for use with our polycarbonate enclosure sizes from 10" x 10" to 24" x 24"
 - Constructed from strong, lightweight, corrosion resistant aluminum
 - Available as standalone SKUs or included with our polycarbonate enclosures*
 - Fastening hardware included

*When ordered included with the enclosure, shelves are shipped unassembled and included in the enclosure carton.

Individual Weight Distribution Shelves for Polycarbonate Enclosures

CATALOG #	SHELF WIDTH	SHELF DEPTH	FITS ENCLOSURE TYPE
WD105	10"	5"	AH10106
WD106	10"	6"	AH12106
WD12	12"	6"	AH14126
WD14	14"	8"	AH16148
WD1610	16"	10"	AH181610
WD168	16"	8"	AH20168
WD24	24"	10"	AH242410

*Fastening hardware included



Polycarbonate Enclosure with Weight Distribution Shelf Included in Carton

CATALOG #	POLYCARBONATE ENCLOSURE DIMENSIONS	SHELF INCLUDED
AHWD1010	10" x 10" x 6"	WD105
AHWD1210	12" x 10" x 6"	WD106
AHWD1412	14" x 12" x 6"	WD12
AHWD1614	16" x 14" x 8"	WD14
AHWD1816	18" x 16" x 10"	WD1610
AHWD2016	20" x 16" x 8"	WD168
AHWD2424	24" x 24" x 10"	WD24



*Add CC to end of Catalog # for polycarbonate enclosure with clear cover

Heartland® Series Interior Mounting Solutions

Side Panel Kits

APPLICATIONS: → Aluminum side panels allow for mounting of components on enclosure walls, increase mounting space and flexibility, and reduce the need to increase the enclosure size to accommodate additional components—enabling customers to use smaller enclosures in applications requiring tight spacing.

BENEFITS:

- Increases customer installation flexibility—equipment can be mounted on multiple sides of the enclosure, in addition to the traditional enclosure back wall
- Lowers cost by reducing the need to increase the enclosure size when more mounting space is required
- Reduces engineering labor (maintains enclosure mounting footprint)

INNOVATIVE FEATURES:

- Available in 9 SKUs designed for use with our polycarbonate enclosure sizes 6" x 6" to 24" x 24"
- Corrosion resistant slot nut fastening hardware kit included
- Simple and easy installation with the use of common tools—simply install, position, and secure the side panel using the provided slot nuts which fit perfectly in the innovative enclosure T-Slots.

Individual Side Panel Kits for Polycarbonate Enclosures

CATALOG #	SIDE PANEL SIZE	FITS (ENCLOSURE LONG SIDE)	FITS (ENCLOSURE SHORT SIDE)
SP6	6"	AH664	AH864
SP8	8"	AH884	AH884, AH1084
SP10	10"	AH1086, AH10106	AH10106
SP12	12"	AH12106	AH14126
SP14	14"	AH14126	AH16148
SP16	16"	AH16148	AH181610, AH20168
SP18	18"	AH181610	n/a
SP20	20"	AH20168	n/a
SP24	24"	AH242410	n/a

**Mounting slot nut hardware included in kit*



Heartland® Series Accessories

SLOT NUT KIT



SWING PANEL MOUNTS



POLYCARBONATE REPLACEMENT LATCH KIT



ACCESSORY KIT



STAINLESS STEEL REPLACEMENT LATCH KIT



POLYCARBONATE VENT



MOUNTING FLANGE KIT



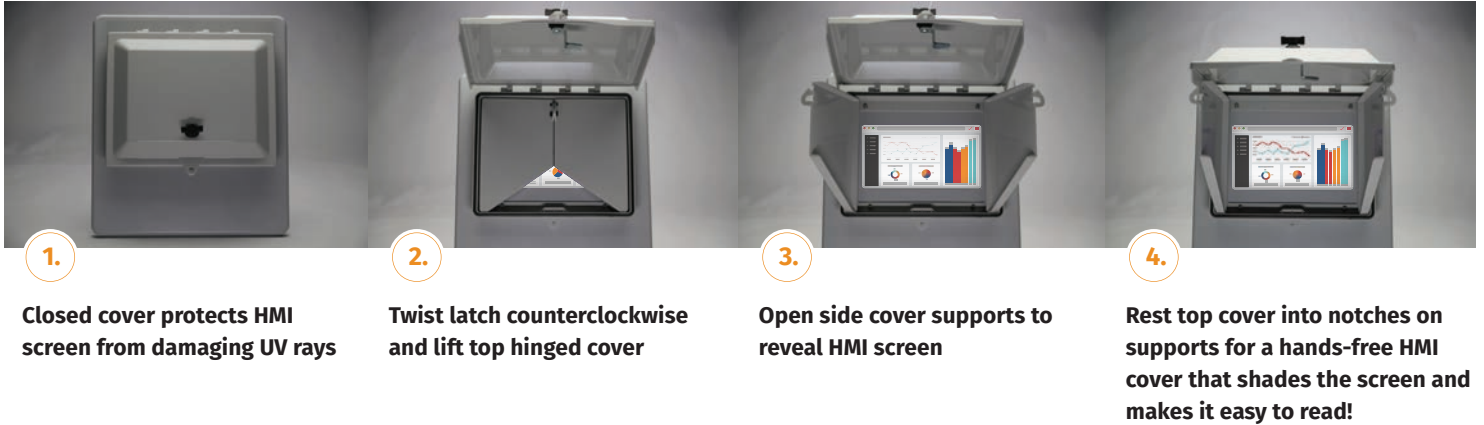
PLUGGIT!



CATALOG #	DESCRIPTION	PIECES INCLUDED
AHSNK	Slot Nut Kit	Two nuts & two screws
AHSPMK	Swing Panel Mounts	Four per kit
AHLK	Polycarbonate Replacement Latch Kit	Two non-metallic latches per kit
AHAK	Accessory Kit – replacement only	Four mounting feet, cover screws, mounting caps, back panels screws, & washers
AHLKSS	Stainless Steel Replacement Latch Kit	Two stainless steel latches per kit
REAH-V60	Small Vent (60mm) UL Listed 3R	Mounting nut
REAH-V80	Small Vent (80mm)	Mounting nut
MFK6 MFK8 MFK10 MFK12 MFK14 MFK16	Mounting Flange Kit for Polycarbonate Enclosures (6"-16")	Two polycarbonate mounting flanges, four countersunk screws
REHP SERIES1	Pluggit! Kit – Fits Cutouts for 1/2", 5/8", 3/4" Dia. Hole	Hole plug, gaskets, spacer sleeve
REHP SERIES1.5	Pluggit! Kit – Fits Cutouts for 1/2" Conduit	Hole plug, gaskets, spacer sleeve
REHP SERIES2	Pluggit! Kit – Fits Cutouts for 1/2" Conduit, 22mm Push Button, 3/4" Conduit, 30mm Push Button	Hole plug, gaskets, spacer sleeve
REHP SERIES3	Pluggit! Kit – Fits Cutouts for 1", 1 1/4" Conduit	Hole plug, gaskets, spacer sleeve
REHP SERIES4	Pluggit! Kit – Fits Cutouts for 1 1/2", 2" Conduit	Hole plug, gaskets, spacer sleeve
REHP SERIES5	Pluggit! Kit – Fits Cutouts for 2 1/2" Conduit	Hole plug, gaskets, spacer sleeve
REHP SERIES6	Pluggit! Kit – Fits Cutouts for 3" Conduit	Hole plug, gaskets, spacer sleeve
REHP SERIES7	Pluggit! Kit – Fits Cutouts for 3 1/2" Conduit	Hole plug, gaskets, spacer sleeve
REHP SERIES8	Pluggit! Kit – Fits Cutouts for 4" Conduit	Hole plug, gaskets, spacer sleeve

SolarShield™ HMI Cover

How It Works:



APPLICATIONS: → Extremely tough and durable, patented SolarShield HMI Covers are used in both outdoor and indoor applications. They provide superior protection of Human Machine Interface (HMI) screens from the sun, wind-blown dust, water, oils, chemicals, grease, and other environmental conditions.

BENEFITS:

- **Simple and Functional:** Easy to use, hinged design includes supporting inner doors for hands-free use and better visibility of the HMI screen in the sun.
- **Superior Protection:** SolarShield HMI covers protect HMI screens and electrical equipment from corrosion and damage due to UV, water, oils, dirt, and sand and greatly reduce equipment replacement cost.
- **Strength:** Impact resistant polycarbonate construction provides long dependable life in harsh conditions.

INNOVATIVE FEATURES:

- Patented design with non-metallic, hinged inner doors to shield screen from the sun and allow for hands-free use
- Maintains NEMA Type 4/4X enclosure rating when paired with a NEMA Type 4/4X HMI device
- Universal covers can be used with either non-metallic or metallic enclosures
- Fits most standard 10" x 8" and smaller HMI screens
- Lightweight, high-impact rated, UV resistant polycarbonate material construction
- Stainless steel hardware kit included
- Padlock-able for increased security
- Simple and easy installation with the use of common tools
- Installation instructions and drill template provided
- Color: Pantone 428C

Also available in Clear configuration without hinged inner doors!



OPEN UP YOUR EYES.



CATALOG #	OVERALL H x W x D	INSIDE H x W x D (SCREEN CLEARANCE)
HMICVR1008	13.13 x 11.41 x 2.50	9.88 x 7.25 x 0.40
HMICVR1008C	13.13 x 11.41 x 2.50	9.88 x 7.25 x 0.40

Other Polycarbonate Enclosures



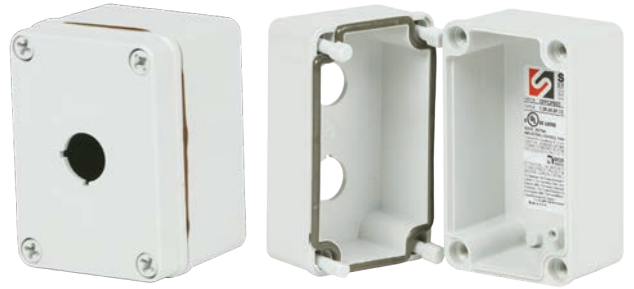
Operator Interface Enclosure

PushButton Series

UL Listed File #E362920, IP66 IP68

UL Listed File #E64358 Type 1, 3R, 4X, 6P, 12

CATALOG #	HOLES	HOLE SIZE	OVERALL H x W x D
COPC1PB	1	1.20 (30)	4.34 x 3.16 x 2.79 (110 x 80 x 71)
COPC2PB	2	1.20 (30)	5.12 x 3.16 x 3.54 (130 x 80 x 90)
COPC1PB22	1	0.89 (22)	4.34 x 3.16 x 2.79 (110 x 80 x 71)
COPC2PB22	2	0.89 (22)	5.12 x 3.16 x 3.54 (130 x 80 x 90)



Safety Yellow PushButton Series

UL Listed File #E362920, IP66, IP68

UL Listed File #E64358 Type 1, 3R, 4X, 6P, 12

CATALOG #	HOLES	HOLE SIZE	OVERALL H x W x D
YW-COPC1PB	1	1.20 (30)	4.34 x 3.16 x 2.79 (110 x 80 x 71)
YW-COPC2PB	2	1.20 (30)	5.12 x 3.16 x 3.54 (130 x 80 x 90)
YW-COPC1PB22	1	0.89 (22)	4.34 x 3.16 x 2.79 (110 x 80 x 71)
YW-COPC2PB22	2	0.89 (22)	5.12 x 3.16 x 3.54 (130 x 80 x 90)



Ideal for emergency stop applications!



Junction Style Enclosure

CO Series

UL File E362920, IP66, IP68

UL Listed File #E64358 Type 1, 3R, 4X, 6P, 12

CATALOG #	HOLES	OVERALL H x W x D	INSIDE A x B x C
COPC432	Blank	4.34 x 3.16 x 2.79 (110 x 80 x 71)	3.92 x 2.74 x 2.51 (100 x 70 x 64)
COPC533	Blank	5.12 x 3.16 x 3.54 (130 x 80 x 90)	7.71 x 2.74 x 3.26 (130 x 80 x 90)



All measurements are in inches; items in parentheses are in millimeters.



500 Maple Street
Belding, MI 48809

o: 616.794.0700
e: CSR@robroyenclosures.com

attabox.com

MADE IN THE USA

©2023 AttaBox® | ALL RIGHTS RESERVED.

V9—09/05/2023