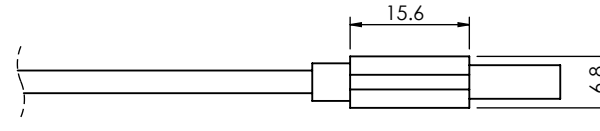
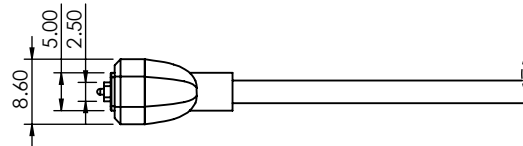
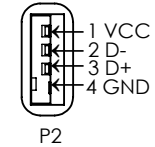
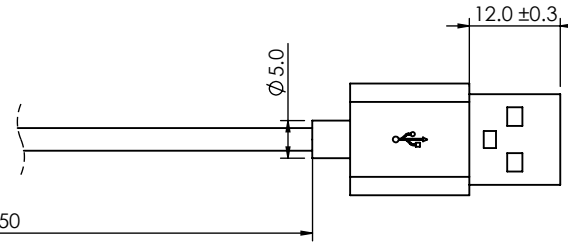
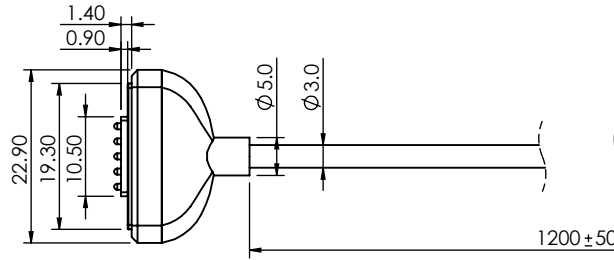
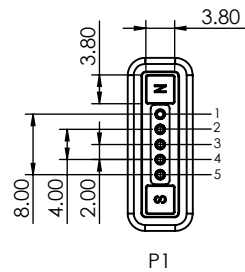


TOLERANCE UNLESS OTHERWISE SPECIFIED	
.X	±0.15
.XX	±0.10

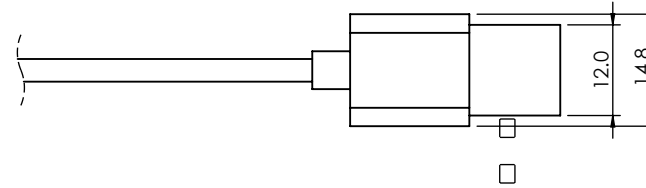
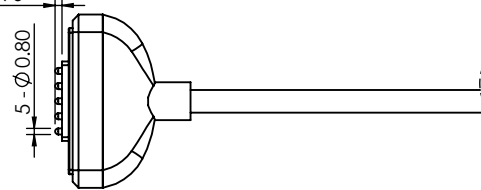
THIS IS A C.A.D. GENERATED DRAWING  
DO NOT MAKE MANUAL REVISIONS TO MASTER.



ISSUE NUMBER	
ORIGINAL	①
ADD NOTE 10	
P.M.	AUG. 13/2023 ②



WORKING STROKE 0.90



**SPECIFICATION:**

- 1- MATERIAL:  
CONTACT: BRASS GOLD FLASH PLATING ALL OVER NICKEL UNDERPLATING  
HOUSING : PA9T, BLACK  
MAGNET: N52  
CABLE: TPE, BLACK, OD: 3.0MM
- 2- ELECTRICAL:  
RATED VOLTAGE (PER CONTACT): 5V  
RATED CURRENT (PER CONTACT): 2A  
100% BREAK/SHORT TEST  
ON-RESISTANCE: 3 OHMS (MAX).  
INSULATION RESISTANCE: 300V/DC 10 MEGAOHMS (MIN).
- 3- CONTACT RESISTANCE: 30mOHMS MAXIMUM BEFORE TEST
- 4- RECOMMENDED WORKING STROKE & FORCE: STROKE 0.9MM (PER CONTACT): 30gf±10gf
- 5- SWING TEST: LIFTING WEIGHT 500g, ±60 DEGREES, 30 TIMES/MIN., 2000 TIMES CONDUCTION OK.
- 6- DURABILITY: 10,000 CYCLE MIN.
- 7- PRESS STROKE 0.9MM PER CONTACT: 30gf±10gf
- 8- SALT SPRAY TEST: 5% SALT SPRAY CONCENTRATION, TEMPERATURE 35°C,  
TEST TIME 24 HOURS, NO CORROSION
- 9- WORKING TEMPERATURE RANGE: -30°C~+85°C
- 10- MATING WITH: 686J0521250124E, 686J0521350124E, 686J0521450110E, 686J0521350110E  
OR 686J0521250110E

**WIRING TABLE**

P1		P2	
3	RED	1	(VCC)
2	WHITE	2	(D-)
4	GREEN	3	(D+)
1&5	BLACK	4	(GND)



THIS SERIES FULLY CONFORMS TO  
THE EUROPEAN UNION DIRECTIVES  
2011/65/EU FOR RoHS COMPLIANCY.



YOUR CONNECTION TO QUALITY & SERVICE

EDAC INC  
TORONTO, ONTARIO  
CANADA

THESE DRAWINGS AND SPECIFICATIONS  
ARE THE PROPERTY OF EDAC INC., AND  
SHALL NOT BE REPRODUCED, OR COPIED  
OR USED AS THE BASIS FOR THE  
MANUFACTURE OR SALE OF APPARATUS  
WITHOUT WRITTEN PERMISSION.

**MAGNETIC SPRING LOADED CONNECTOR TO  
USB-A CABLE ASSEMBLY, 5POS, MALE**

ACAD REFERENCE NO.:	687J0522A51110E	UNIT: MM
DRAWN:	J.L.	DATE: 8/13/2023
CHECKED:	R.S.M	DATE: 8/13/2023
SCALE:	(IN CAD 1:1)	SHEET 1 OF 1
DRAWING NUMBER:	687J0522A51110E	ISSUE
PART NUMBER:	687J0522A51110E	2