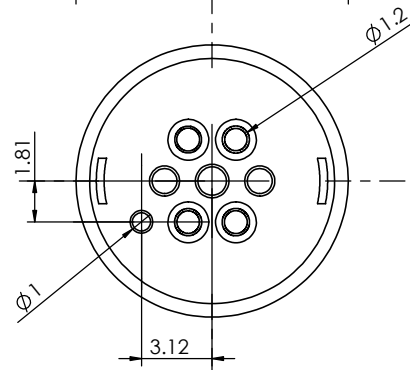
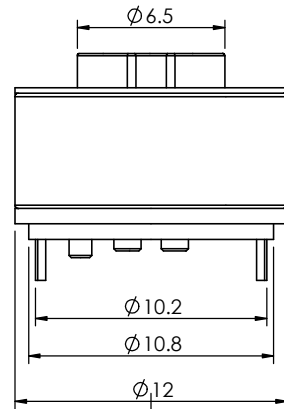
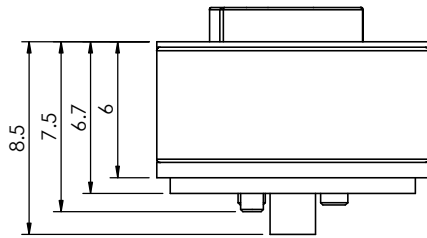
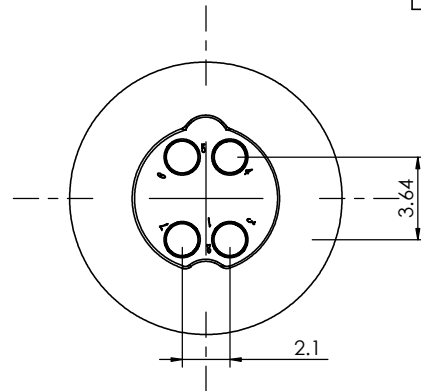


TOLERANCE UNLESS OTHERWISE SPECIFIED	
.X	±0.15
.XX	±0.10

THIS IS A C.A.D. GENERATED DRAWING
DO NOT MAKE MANUAL REVISIONS TO MASTER.



ISSUE NUMBER	
ORIGINAL	①
ADD NOTE 6 & 7	
P.M.	AUG. 11/2023 ②
REVISE NOTE 1	
L.K.	AUG. 18/2023 ③



SPECIFICATION:

1- MATERIAL:

CONTACT: BRASS, GOLD FLASH PLATING ALL OVER NICKEL UNDERPLATING
HOUSING: PA9T, BLACK
MAGNET: N52

2- ELECTRICAL:

RATED VOLTAGE (PER CONTACT): 5V
RATED CURRENT (PER CONTACT): 2A
INSULATION RESISTANCE: 100MEGAOHMS MIN.
DIELECTRIC WITHSTAND VOLTAGE: 100V AT 60Hz
CONTACT RESISTANCE: 30mOHMS MAX. BEFORE TEST AND 60mOHMS MAX. AFTER TEST

3- SALT SPRAY TEST: 5% SALT SPRAY CONCENTRATION, TEMPERATURE 35°C, TEST TIME 48 HOURS, NO CORROSION.

4- MECHANICAL LIFE: 30,000 CYCLES MIN.

5- WORKING TEMPERATURE RANGE: -30~+85°C

6- RECOMMENDED SOLDERING PROCESS ARE SELECTIVE SOLDERING OR MANUAL SOLDERING. OTHER FORMS OF SOLDERING SUCH AS WAVE SOLDER OR REFLOW SOLDER ARE NOT RECOMMENDED AND CAN POTENTIALLY CAUSE DEMAGNETIZATION OF MAGNET IN THE CONNECTOR

7- MATING WITH: 685A04222A01E1E

**MAGNETIC SPRING LOADED CONNECTOR,
4POS, FEMALE**

ACAD REFERENCE NO.: 686A04222A01E1E UNIT: MM

DRAWN: J.L. DATE: 8/23/2023

CHECKED: R.S.M DATE: 8/23/2023

SCALE: (IN CAD 1:1) SHEET 1 OF 1

DRAWING NUMBER: 686A04222A01E1E ISSUE

PART NUMBER: 686A04222A01E1E 3



THIS SERIES FULLY CONFORMS TO
THE EUROPEAN UNION DIRECTIVES
2011/65/EU FOR RoHS COMPLIANCY.



YOUR CONNECTION TO QUALITY & SERVICE

EDAC INC
TORONTO, ONTARIO
CANADA

THESE DRAWINGS AND SPECIFICATIONS
ARE THE PROPERTY OF EDAC INC., AND
SHALL NOT BE REPRODUCED, OR COPIED
OR USED AS THE BASIS FOR THE
MANUFACTURE OR SALE OF APPARATUS
WITHOUT WRITTEN PERMISSION.