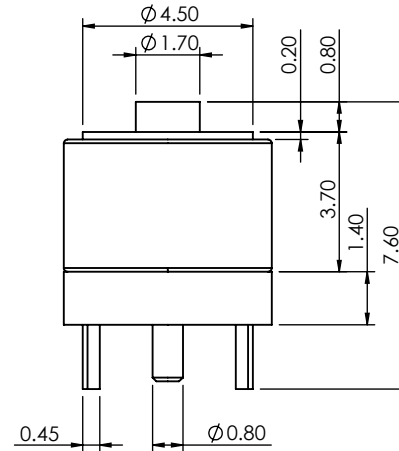
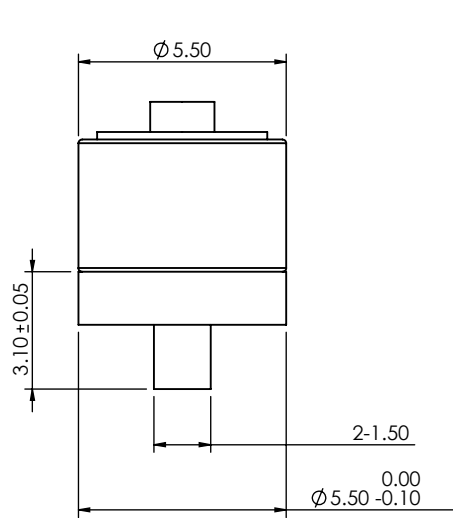


TOLERANCE UNLESS OTHERWISE SPECIFIED	
.X	±0.15
.XX	±0.10

THIS IS A C.A.D. GENERATED DRAWING
DO NOT MAKE MANUAL REVISIONS TO MASTER.

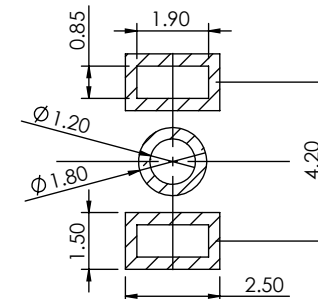
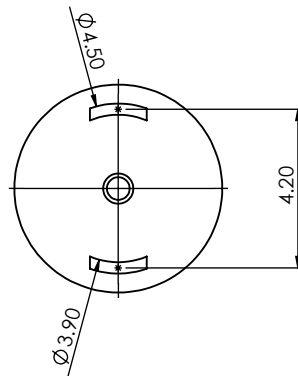


ISSUE NUMBER	
ORIGINAL	①
ADD NOTE 4 & 5	
P.M.	AUG.9/2023 ②



SPECIFICATION:

- 1- MATERIAL:
CONTACT: BRASS GOLD FLASH PLATING ALL OVER
NICKEL UNDERPLATING
HOUSING : PA9T
MAGNET: N52
- 2- ELECTRICAL:
RATED VOLTAGE (PER CONTACT): 5V
RATED CURRENT (PER CONTACT): 2A
- 3- WORKING TEMPERATURE RANGE: -30°C~+85°C
- 4- RECOMMENDED SOLDERING PROCESS ARE SELECTIVE SOLDERING OR MANUAL SOLDERING. OTHER FORMS OF SOLDERING SUCH AS WAVE SOLDER OR REFLOW SOLDER ARE NOT RECOMMENDED AND CAN POTENTIALLY CAUSE DEMAGNETIZATION OF MAGNET IN THE CONNECTOR
- 5- MATING WITH: 685A02222001A1E



PCB LAYOUT
LAYOUT TOLERANCE: ±0.05MM

MAGNETIC SPRING LOADED CONNECTOR, 1POS, FEMALE		ACAD REFERENCE NO.: 686A02222011A1E	UNIT: MM
		DRAWN: J.L.	DATE: 8/10/2023
EDAC EDAC INC TORONTO, ONTARIO CANADA YOUR CONNECTION TO QUALITY & SERVICE		CHECKED: R.S.M	DATE: 8/10/2023
		SCALE: (IN CAD 1:1)	SHEET 1 OF 1
THESE DRAWINGS AND SPECIFICATIONS ARE THE PROPERTY OF EDAC INC., AND SHALL NOT BE REPRODUCED, OR COPIED OR USED AS THE BASIS FOR THE MANUFACTURE OR SALE OF APPARATUS WITHOUT WRITTEN PERMISSION.			DRAWING NUMBER: 686A02222011A1E
			PART NUMBER: 686A02222011A1E
			ISSUE 2



THIS SERIES FULLY CONFORMS TO THE EUROPEAN UNION DIRECTIVES 2011/65/EU FOR RoHS COMPLIANCY.