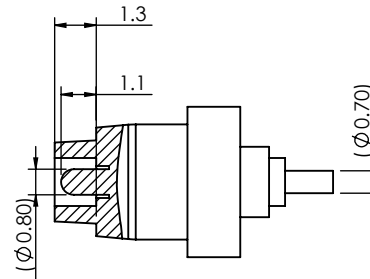
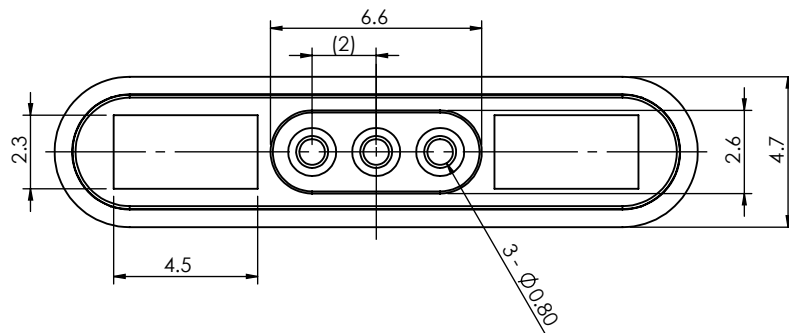
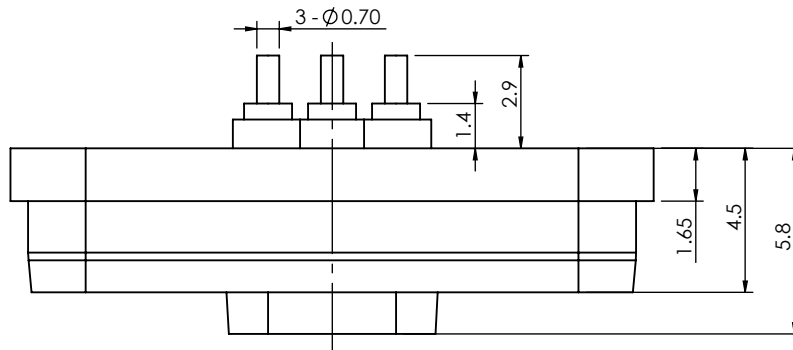
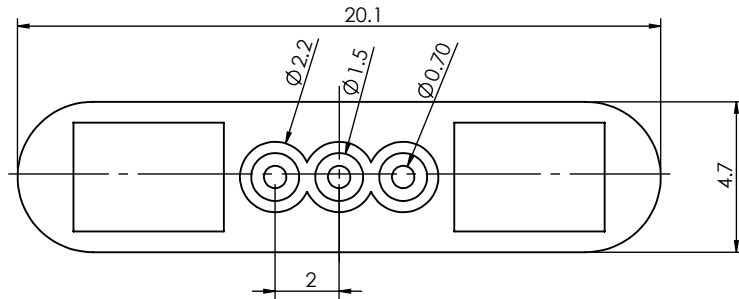


TOLERANCE
UNLESS OTHERWISE
SPECIFIED
±0.15

THIS IS A C.A.D. GENERATED DRAWING
DO NOT MAKE MANUAL REVISIONS TO MASTER.



| | |
|----------------|----------------|
| ISSUE NUMBER | |
| ORIGINAL | ① |
| ADD NOTE 6 & 7 | |
| P.M. | AUG. 13/2023 ② |



SPECIFICATION:

- 1- MATERIAL:
CONTACT: BRASS GOLD FLASH PLATING ALL OVER NICKEL UNDERPLATING
SPRING: SUS
HOUSING : ABS
MAGNET : N52
- 2- ELECTRICAL:
RATED VOLTAGE (PER CONTACT): 5V
RATED CURRENT (PER CONTACT): 2A
- 3- RECOMMENDED WORKING STROKE & FORCE: STROKE 0.8MM (PER CONTACT): 60gf MAX
- 4- MECHANICAL LIFE: 0.8mm: 10,000 CYCLES MIN.
- 5- WORKING TEMPERATURE RANGE: -30~+85° C
- 6- RECOMMENDED SOLDERING PROCESS ARE SELECTIVE SOLDERING OR MANUAL SOLDERING. OTHER FORMS OF SOLDERING SUCH AS WAVE SOLDER OR REFLOW SOLDER ARE NOT RECOMMENDED AND CAN POTENTIALLY CAUSE DEMAGNETIZATION OF MAGNET IN THE CONNECTOR
- 7- MATING WITH: 686G0321310125E

MAGNETIC SPRING LOADED CONNECTOR,
3POS, MALE

| | | |
|---------------------|-----------------|-----------------|
| ACAD REFERENCE NO.: | 685G0321210110E | UNIT: MM |
| DRAWN: | J.L. | DATE: 8/13/2023 |
| CHECKED: | R.S.M | DATE: 8/13/2023 |
| SCALE: | (IN CAD 1:1) | SHEET 1 OF 1 |
| DRAWING NUMBER: | 685G0321210110E | ISSUE |
| PART NUMBER: | 685G0321210110E | 2 |



THIS SERIES FULLY CONFORMS TO
THE EUROPEAN UNION DIRECTIVES
2011/65/EU FOR RoHS COMPLIANCY.



YOUR CONNECTION TO QUALITY & SERVICE

EDAC INC
TORONTO, ONTARIO
CANADA

THESE DRAWINGS AND SPECIFICATIONS
ARE THE PROPERTY OF EDAC INC., AND
SHALL NOT BE REPRODUCED, OR COPIED
OR USED AS THE BASIS FOR THE
MANUFACTURE OR SALE OF APPARATUS
WITHOUT WRITTEN PERMISSION.