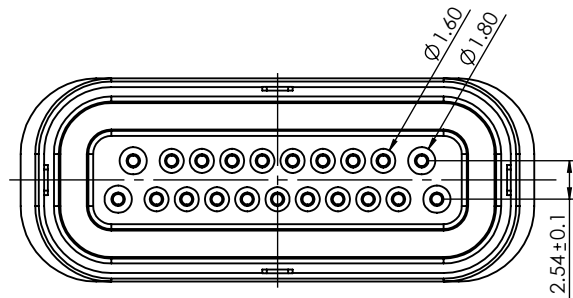
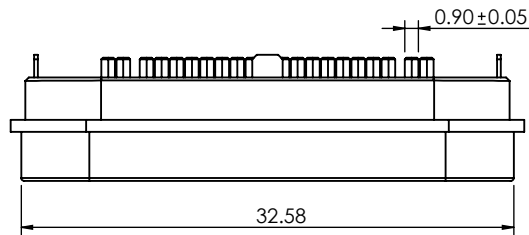
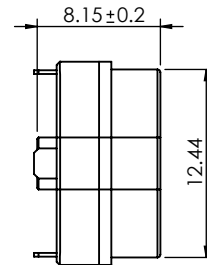
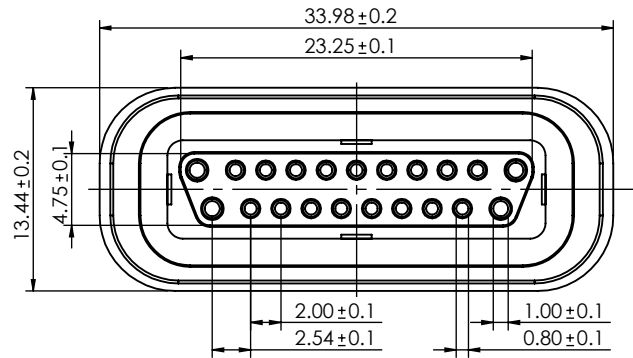


TOLERANCE UNLESS OTHERWISE SPECIFIED	
.X	±0.15
.XX	±0.15

THIS IS A C.A.D. GENERATED DRAWING
DO NOT MAKE MANUAL REVISIONS TO MASTER.



ISSUE NUMBER	
ORIGINAL	①
ADD NOTE 4 & 5	
P.M.	AUG. 12/2023 ②



SPECIFICATION:

- 1- MATERIAL:
CONTACT: BRASS GOLD FLASH PLATING ALL OVER NICKEL UNDERPLATING
HOUSING : PA, BLACK
- 2- ELECTRICAL:
RATED VOLTAGE (PER CONTACT): 24V
RATED CURRENT (PER CONTACT): 3A
INSULATION RESISTANCE: 100MEGAOHMS MINIMUM
CONTACT RESISTANCE: 25mOHMS MAXIMUM
- 3- WORKING TEMPERATURE RANGE: -30°C~+85°C
- 4- RECOMMENDED SOLDERING PROCESS ARE SELECTIVE SOLDERING OR MANUAL SOLDERING. OTHER FORMS OF SOLDERING SUCH AS WAVE SOLDER OR REFLOW SOLDER ARE NOT RECOMMENDED AND CAN POTENTIALLY CAUSE DEMAGNETIZATION OF MAGNET IN THE CONNECTOR
- 5- MATING WITH: 686A2131260114E



THIS SERIES FULLY CONFORMS TO
THE EUROPEAN UNION DIRECTIVES
2011/65/EU FOR RoHS COMPLIANCY.



YOUR CONNECTION TO QUALITY & SERVICE

EDAC INC
TORONTO, ONTARIO
CANADA

THESE DRAWINGS AND SPECIFICATIONS
ARE THE PROPERTY OF EDAC INC., AND
SHALL NOT BE REPRODUCED, OR COPIED
OR USED AS THE BASIS FOR THE
MANUFACTURE OR SALE OF APPARATUS
WITHOUT WRITTEN PERMISSION.

MAGNETIC SPRING LOADED CONNECTOR, 21POS, MALE		ACAD REFERENCE NO.: 685A2131260111E	UNIT: MM
		DRAWN: J.L.	DATE: 8/12/2023
		CHECKED: R.S.M	DATE: 8/12/2023
		SCALE: (IN CAD 1:1)	SHEET 1 OF 1
DRAWING NUMBER: 685A2131260111E			ISSUE
PART NUMBER: 685A2131260111E			2