

IW612_PB

1x1 Dual-band Wi-Fi 6, Bluetooth 5.2 and 802.15.4 Tri-radio Solution

Rev. 1 — 16 May 2023

Product brief

1 Product overview

The IW612 is a highly integrated 2.4/5 GHz dual-band 1x1 Wi-Fi 6, Bluetooth/Bluetooth Low Energy 5.2 and 802.15.4 tri-radio single-chip solution optimized for a broad array of IoT and industrial applications in smart home, smart devices and accessories, smart appliances, smart energy, industrial automation, gateways and many more. This high degree of integration contributes to very low system costs and a minimum external BOM while achieving efficient co-existence between all internal radios as well as external radios.

IW612 includes a full-feature Wi-Fi subsystem powered by NXP's 802.11ax (Wi-Fi 6) technology bringing higher throughput, better network efficiency, lower latency and improved range over previous generation Wi-Fi standards. The Wi-Fi subsystem integrates a Wi-Fi MAC, baseband, and direct-conversion radio with integrated PA, LNA, and transmit/receive switch removing the need for an RF front end module (FEMs), saving cost, and reducing system complexity.

In addition to a Wi-Fi 6 radio, the IW612 integrates an independent Bluetooth 5.2 and 802.15.4 subsystem that supports Thread mesh network. The device features Bluetooth Profiles such as hands free (HFP), advanced audio distribution profile (A2DP) for audio streaming as well as additional profiles like dual wide band speech (WBS). For Bluetooth Low Energy, the IW612 enables 2 Mbit/s high speed data rate, long range, and extended advertising. Finally, LE Audio feature is supported utilizing isochronous channels for a better overall audio experience.

The Tri-radio capability of the IW612 makes it an ideal device for Matter applications running over Wi-Fi and/or Thread. The IW612 can operate as a Matter Controller as well as Thread Border Router. This capability enables full Matter functionality for both local and cloud-based control, and monitoring of IoT products seamlessly across major ecosystems.

The IW612 supports two front-end antenna configurations: single-antenna ([Figure 1](#)) and dual-antenna ([Figure 2](#)).

The IW612 integrates dedicated CPUs and memories for both the Wi-Fi and Bluetooth/802.15.4 subsystems which enable real time, independent protocol processing. Interfaces for connecting the IW612 to external host processors include SDIO 3.0 for Wi-Fi, UART for Bluetooth and SPI for 802.15.4.



Figure 1 shows the application diagram for the single-antenna configuration.

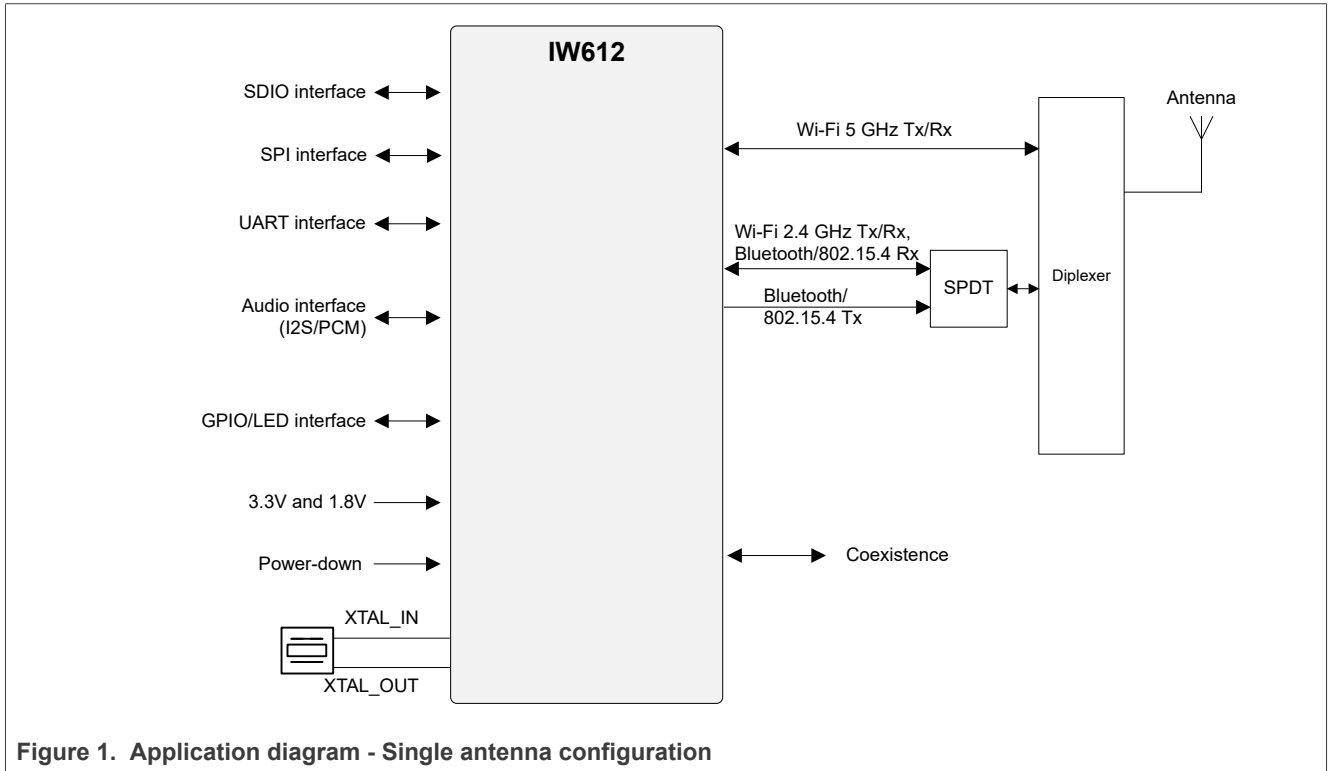


Figure 1. Application diagram - Single antenna configuration

Figure 2 shows the application diagram for the dual-antenna configuration.

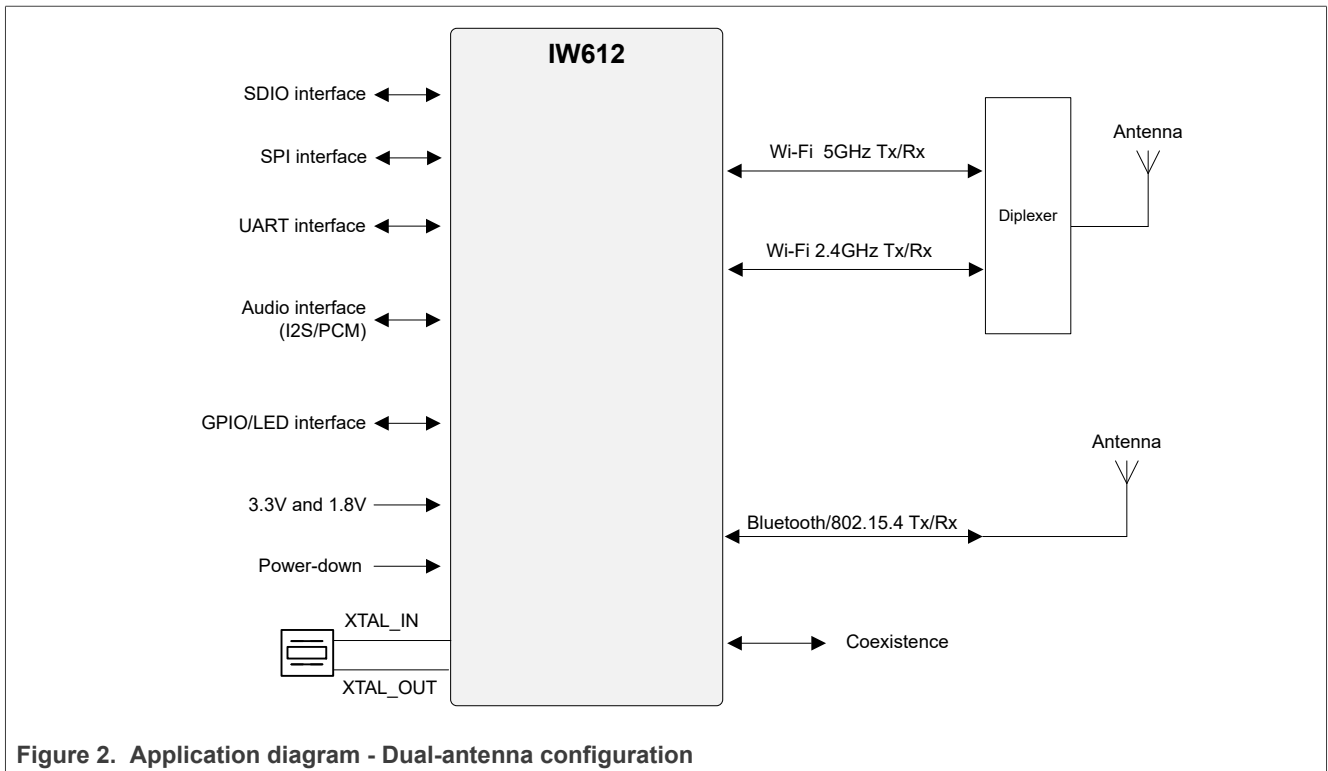


Figure 2. Application diagram - Dual-antenna configuration

1.1 Applications

- Smart entertainment — Smart speaker, smart display, streaming/OTT device, smart television
- Gateways/hubs/bridges — Voice assistant front-end, Matter controller and Thread border router, and other radios to Wi-Fi/IP network
- Smart home — Control panel, security system, thermostat, sprinkler controller, security camera, garage door controller, smart outlet, light switch, smart doorbell, smoke alarm/CO detector
- Industrial — Building automation, smart lighting, Wi-Fi to other radio bridge, point of sale (POS) terminal
- Smart appliances — Refrigerator, washer, dryer, oven range, microwave, dishwasher, water heater, air conditioner, coffee pot, rice cooker, vacuum cleaner, air purifier

1.2 Product family devices

- AW611: Automotive AECQ-100 grade 2 and grade 3, Wi-Fi 6 and Bluetooth/Bluetooth Low Energy (LE)
- IW611: Wi-Fi 6 and Bluetooth/Bluetooth Low Energy (LE)
- IW612: Wi-Fi 6, Bluetooth/Bluetooth Low Energy (LE), and 802.15.4 Tri-radio

2 Wi-Fi subsystem

2.1 IEEE 802.11 standards

- 802.11ax 1x1 SU and MU-MIMO/OFDMA
- 802.11ac Wave 1/2 backward compatible
- 802.11n/a/g/b backward compatible
- 802.11d operation in additional regulatory domains
- 802.11az accurate ranging
- 802.11e quality of service
- 802.11h transmit power control
- 802.11h DFS radar pulse detection
- 802.11k radio resource measurement
- 802.11mc precise indoor location positioning
- 802.11r fast hand-off for AP roaming
- 802.11v BTM frame transmission/reception
- 802.11w protected management frames
- 802.11y ECSA
- 802.11z tunneled direct link setup
- Fully supports clients (stations) implementing IEEE Power Save mode

2.2 Wi-Fi MAC

- 802.11ax 1x1 MU-MIMO MAC
- Trigger Frame Formats
 - Basic trigger frame
 - MU-BAR, MU-RTS, Beamforming Report Poll (BFRP), BSR Poll (BSRP) trigger variant
 - Trigger frame MAC padding
- HE Variants of HT Control
 - Basic format
 - UL Power Headroom
 - Receive Operation Mode control subfield
- HE MU Frame Exchange Sequences
- MU Acknowledgment (ACK)
- M-BA and C-BA Variants in BA Frames
- MU-RTS/CTS Procedures
- Target Wait Time Scheduling
- HE Dual-NAV
- UL Carrier Sensing
- Buffer Status Reports in response to BSRP trigger frames
- Operating Mode Indication (OMI)
- A-MPDU Rx (de-aggregation) and Tx (aggregation) (supports single-MPDU A-MPDU)

- Reduced Inter-Frame Spacing (RIFS) receive
- Management information base counters
- Radio resource measurement counters
- Quality of service queues
- Block acknowledgment extension
- Dynamic frequency selection
- Multiple-BSS/Station
- Long and short preamble generation on a frame-by-frame basis for 802.11b frames
- Transmit rate adaptation
- Transmit power control
- Mobile hotspot

2.3 Wi-Fi baseband

- 802.11ax 1x1 MU-MIMO baseband, backward compatible with 802.11ac/n/a/g/b technology
- Bandwidth support
 - 20 MHz
 - 40 MHz
 - 80 MHz
- Modulation and Coding Schemes (MCS)
 - 802.11ax—MCS0~11
 - 802.11ac—MCS0~9
 - 802.11n—MCS0~7
 - Dual Sub-Carrier Modulation (DCM)
 - MCS0
 - BCC and LDPC coding
- Frame Formats
 - 802.11ax HE_SU (Tx/Rx)
 - 802.11ax HE_MU (Rx)
 - 802.11ax HE_ER_SU (Tx/Rx)
 - 802.11ax HE_TB (Tx)
 - 802.11ac VHT
 - 802.11n HT
 - 802.11a (including dup/quad modes)
 - 802.11g (including dup mode)
 - 802.11b
- Uplink MU-MIMO Tx as STA
- Downlink MU-MIMO Rx as STA
- Aggressive Packet Extension
- Range Extension
- Receiver Beam Change
- Guard Interval Modes
 - 1x HE-LTF with 0.8 us GI
 - 1x HE-LTF with 1.6 us GI (for UL TB PPDU)
 - 2x HE-LTF with 0.8 us GI
 - 2x HE-LTF with 1.6 us GI
 - 4x HE-LTF with 3.2 us GI
 - 4x HE-LTF with 0.8 us GI
- Dynamic Frequency Selection (DFS) (radar detection)
- Optional 802.11ac and 802.11n MIMO features:
 - 20/40/80 MHz coexistence with middle-packet detection (GI detection) for enhanced CCA
 - LDPC transmission and reception for both 802.11ac and 802.11n
 - Short guard interval (0.4 us)
 - RIFS on receive path for 802.11n packets
 - VHT MU-PPDU (receive)
- Spectral intelligence
 - Spectrum monitoring
 - DFS assist to reduce false detections
 - Interference identification/classification

- Power save features

2.4 Wi-Fi radio

- 5 GHz and 2.4 GHz Wi-Fi band operation
- 802.11ax 1x1 MU-MIMO on-chip RF radio
- Integrated PA, LNA

2.5 RF channels

[Table 1](#) shows the list of supported channels for 2.4 GHz and 5 GHz.

Table 1. List of supported Wi-Fi channels

Channel number	Frequency	Channel number	Frequency	Channel number	Frequency
2.4 GHz channel					
1	2412 MHz	2	2417 MHz	3	2422 MHz
4	2427 MHz	5	2432 MHz	6	2437 MHz
7	2442 MHz	8	2447 MHz	9	2452 MHz
10	2457 MHz	11	2462 MHz	12	2467 MHz
13	2472 MHz	—	—	—	—
5 GHz channel					
36	5180 MHz	40	5200 MHz	44	5220 MHz
48	5240 MHz	52	5260 MHz	56	5280 MHz
60	5300 MHz	64	5320 MHz	100	5500 MHz
104	5520 MHz	108	5540 MHz	112	5560 MHz
116	5580 MHz	120	5600 MHz	124	5620 MHz
128	5640 MHz	132	5660 MHz	136	5680 MHz
140	5700 MHz	144	5720 MHz	149	5745 MHz
153	5765 MHz	157	5785 MHz	161	5805 MHz
165	5825 MHz	169	5845 MHz	173	5865 MHz
177	5885 MHz	—	—	—	—
184	4920	187	4935	188	4940
192	4960	196	4980	—	—
8	5040	11	5055	12	5060
16	5080	—	—	—	—

2.6 Wi-Fi encryption

- Supports WPA2 and WPA3 personal and enterprise
- Data Frame Encryption/Decryption
 - Advanced Encryption Standard (AES) / Counter-Mode/CBC-MAC Protocol (CCMP)
 - Advanced Encryption Standard (AES) / Galois/Counter Mode Protocol (GCMP)
 - WLAN Authentication and Privacy Infrastructure (WAPI)
- Management Frame Encryption/Decryption for broadcast/multicast packets
 - Advanced Encryption Standard (AES) / Cipher-based Message Authentication Code (CMAC)
 - BIP-GMAC
- Management Frame Encryption/Decryption for unicast packets
 - AES/CCMP
 - AES/GCMP

2.7 Beamforming

- 802.11ax/ac/n Explicit Beamforming
 - Supports sounding feedback for up to 4x4 Beamformer

2.8 Wi-Fi host interface

- SDIO 3.0 (4-bit SDIO and 1-bit SDIO) with transfer rates up to SDR104 (208 MHz)

3 Bluetooth subsystem

3.1 Bluetooth features

- Bluetooth 5.2 features
- Bluetooth Class 2
- Bluetooth Class 1
- Single-ended, shared Tx/Rx path for Bluetooth
- I2S/PCM interface for voice applications
- Baseband/radio BDR/EDR packet types—1 Mbps (GFSK), 2 Mbps ($\pi/4$ -DQPSK), 3 Mbps (8DPSK)
- Fully functional Bluetooth baseband—AFH, forward error correction, header error control, access code correlation, CRC, encryption bit stream generation, and whitening
- Interlaced scan for faster connection setup
- Simultaneous active ACL connection support
- Automatic ACL packet type selection
- Full central¹ and peripheral¹ piconet support
- Scatternet support
- Standard UART HCI transport layer
- HCI layer to integrate with profile stack
- SCO/eSCO links with hardware accelerated audio signal processing and hardware supported PPEC algorithm for speech quality improvement
- All standard SCO/eSCO voice coding
- A2DP support
- All standard pairing, authentication, link key, and encryption operations
- Standard Bluetooth power-saving mechanisms (hold, sniff modes, and sniff subrating)
- Enhanced Power Control (EPC)
- Channel Quality Driven Data Rate (CQDDR)
- Wideband Speech (WBS) support (2 WBS links)
- Encryption (AES) support

¹ The master/slave replacement in this document follows the recommendation of Bluetooth SIG.

3.2 Bluetooth Low Energy (LE) features

- Bluetooth LE 5.3
- Supports up to 16 simultaneous central²/peripheral² connections
- Wi-Fi/Bluetooth coexistence protocol support
- Shared RF with BDR/EDR
- Encryption (AES) support
- Intelligent Adaptive Frequency Hopping (AFH)
- Bluetooth LE Privacy 1.3
- Bluetooth LE Secure Connection
- Bluetooth LE Data Length Extension
- Bluetooth LE Advertising Extension
- Bluetooth LE Long Range
- Bluetooth LE 2 Mbps
- Bluetooth LE power control
- Bluetooth LE isochronous channels³

3.3 Bluetooth host interface

- High-Speed UART with support up to 3 Mbps baud rate

² The master/slave replacement in this document follows the recommendation of Bluetooth SIG.

³ Bluetooth LE audio supported with external host running Low Complexity Communication codec (LC3) through HCI interface

3.4 Digital audio interfaces

3.4.1 I2S interface

- Central⁴ or peripheral⁴ mode
- I2S (Inter-IC Sound) interface for audio data connection to Analog-to-Digital Converters (ADC) and Digital-to-Analog Converters (DAC)
- 3-state I2S interface capability
- I2S pins shared with PCM pins
- Supports clock speeds of 4.096 MHz, 2.048 MHz, and 2 MHz

3.4.1.1 I2S interface protocol

Figure 3 shows I2S interface protocol.

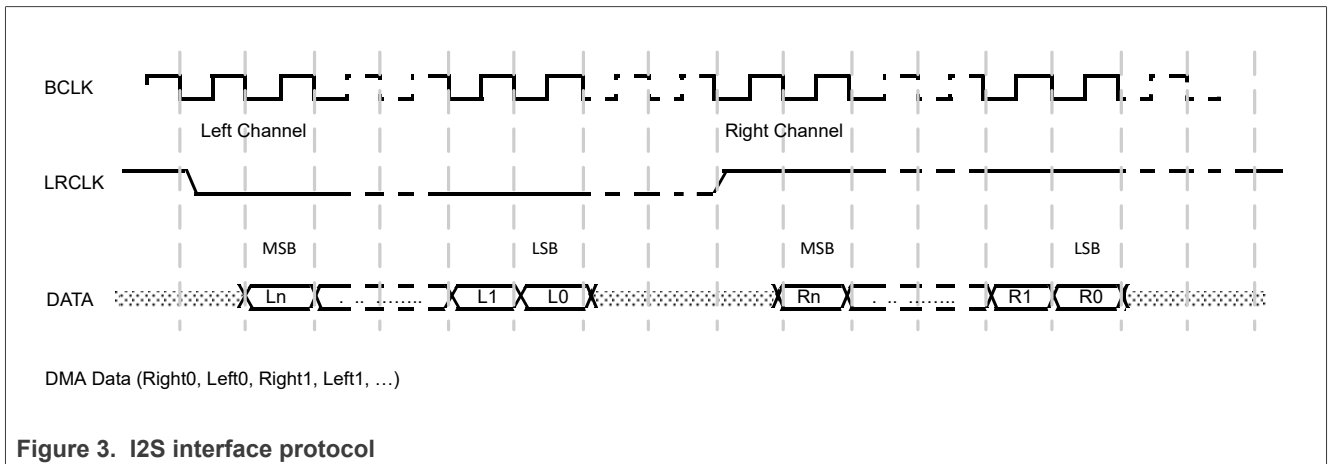


Figure 3. I2S interface protocol

⁴ The master/slave replacement in this document follows the recommendation of Bluetooth SIG.

IW612 supports mono and dual channel modes.

In mono-channel mode, by default the left channel is used for data.

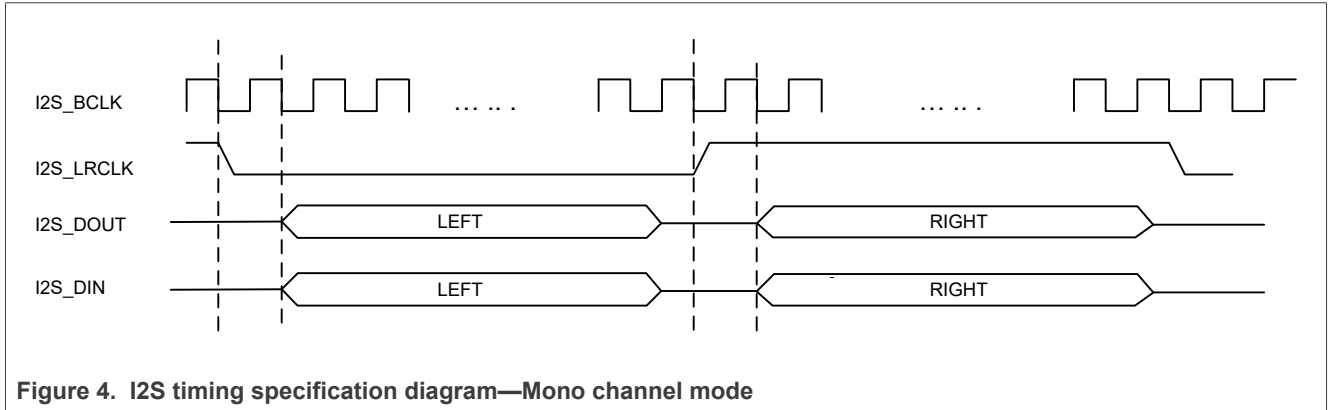


Figure 4. I2S timing specification diagram—Mono channel mode

In dual-channel mode, the two channels are supported on two time slots.

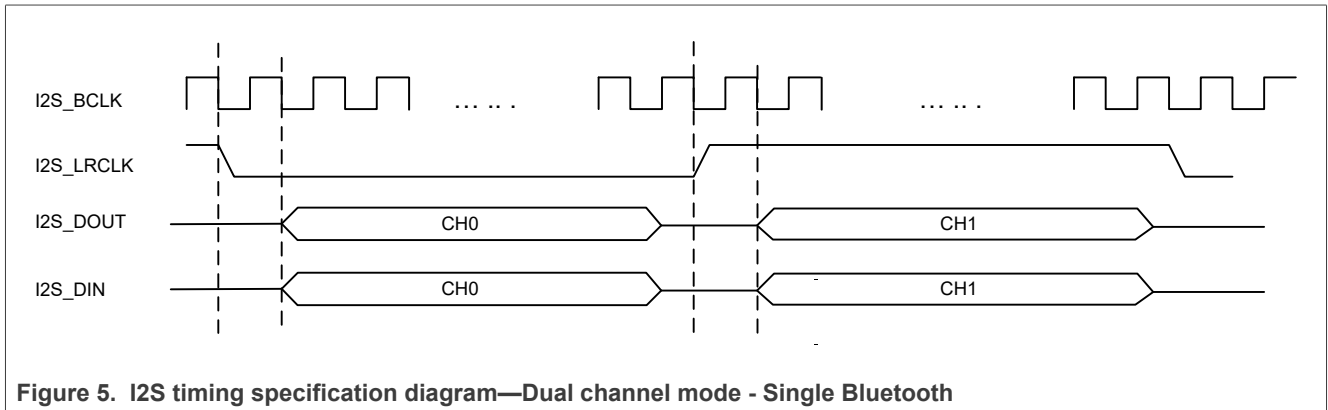


Figure 5. I2S timing specification diagram—Dual channel mode - Single Bluetooth

With dual Bluetooth, the channel pair CH0 + CH2 is for one Bluetooth, and the channel pair CH1 + CH3 is for the second Bluetooth.

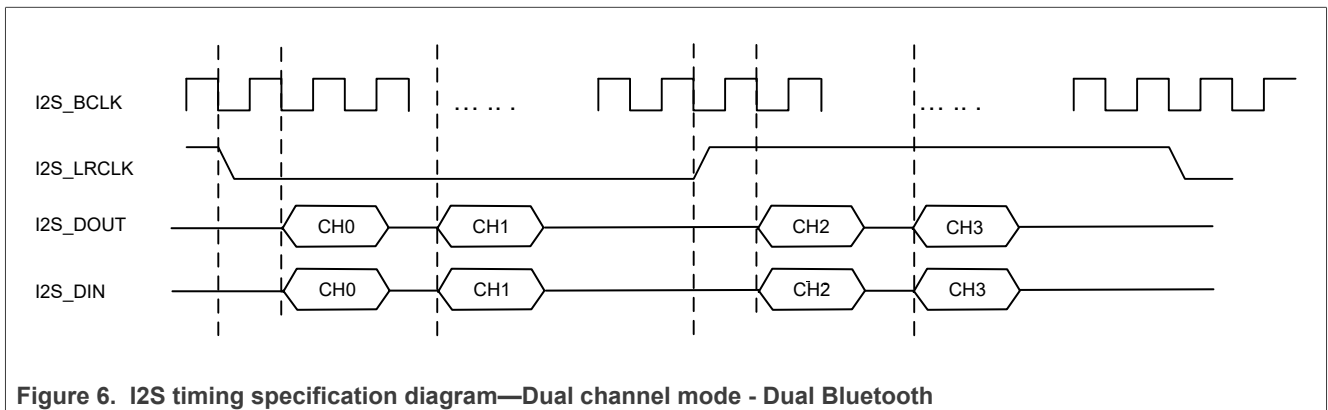


Figure 6. I2S timing specification diagram—Dual channel mode - Dual Bluetooth

3.4.1.2 Clock frequency and audio data resolutions

Audio data may arrive with different input data formats with different sampling rates.

In central⁵ mode, the I2S interface uses an audio input clock of 4.096 MHz or 2.048 MHz to provide the appropriate M clock (MCLK) and bit clock (I2S_BCLK) frequency to match the sampling rates of each audio data format. The sampling rates can be 8 kHz to 16 kHz.

In peripheral⁵ mode, the I2S interface does not provide the bit clock (I2S_BCLK) but it can provide the M clock (MCLK).

⁵ The master/slave replacement in this document follows the recommendation of Bluetooth SIG.

3.4.2 PCM interface

- Central⁶ or peripheral⁶ mode
- PCM bit width size of 8 bits or 16 bits
- Up to four slots with configurable bit width and start positions
- 3-state PCM interface capability
- PCM short frame and long frame⁷ synchronization
- PCM pins shared with I2S pins
- Supports clock speeds of 4.096 MHz, 2.048 MHz, and 2 MHz

3.4.2.1 PCM protocol

The PCM interface supports long and short frame sync. [Figure 7](#) and [Figure 8](#) show an example of a PCM interface with four signals.

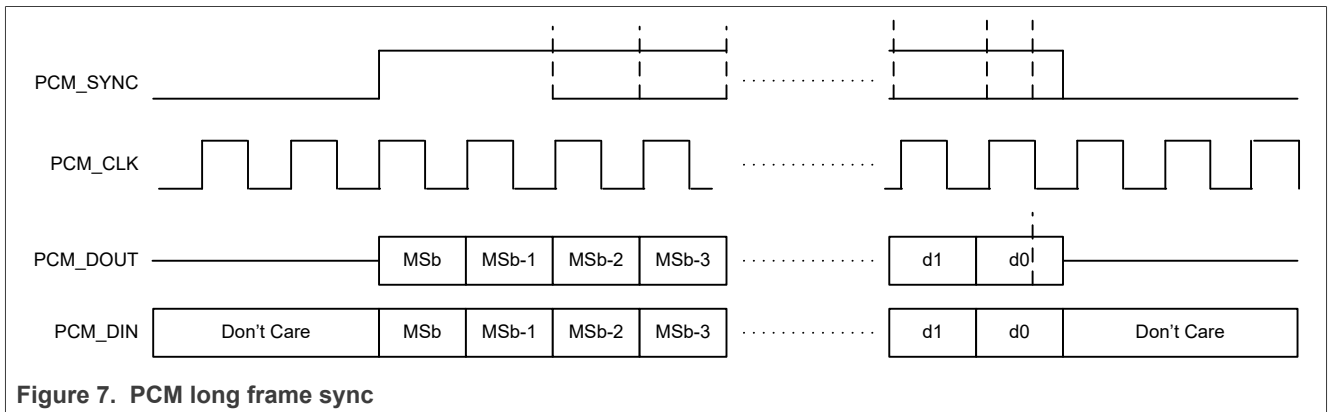


Figure 7. PCM long frame sync

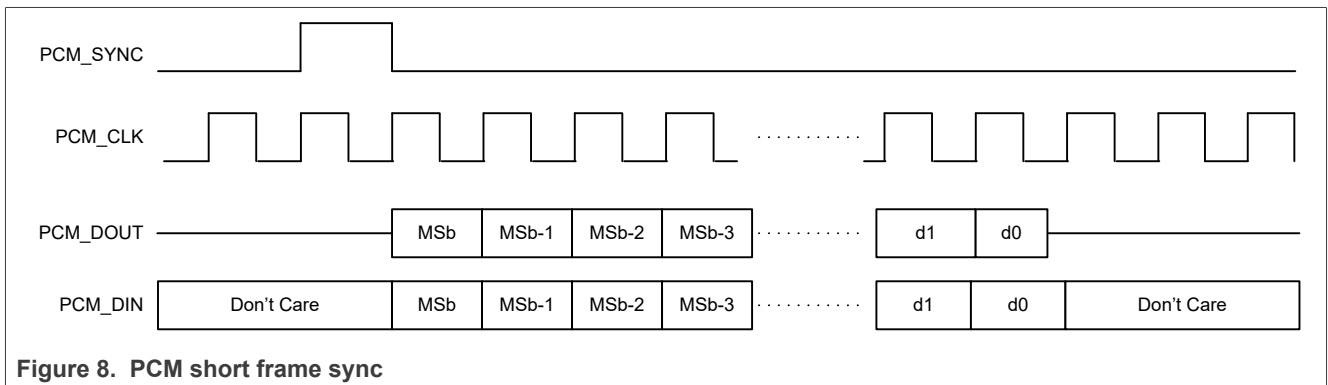


Figure 8. PCM short frame sync

⁶ The master/slave replacement in this document follows the recommendation of Bluetooth SIG.

⁷ In PCM central mode, PCM long frame synchronization is 1 clock wide. In PCM peripheral mode, PCM central long frame synchronization pattern is supported.

IW612 supports mono and dual channel modes.

Note: [Figure 9](#) and [Figure 10](#) illustrate PCM mono and dual channel modes in short frame sync. The same applies to long frame sync.

In mono-channel mode, by default the left channel is used for data.

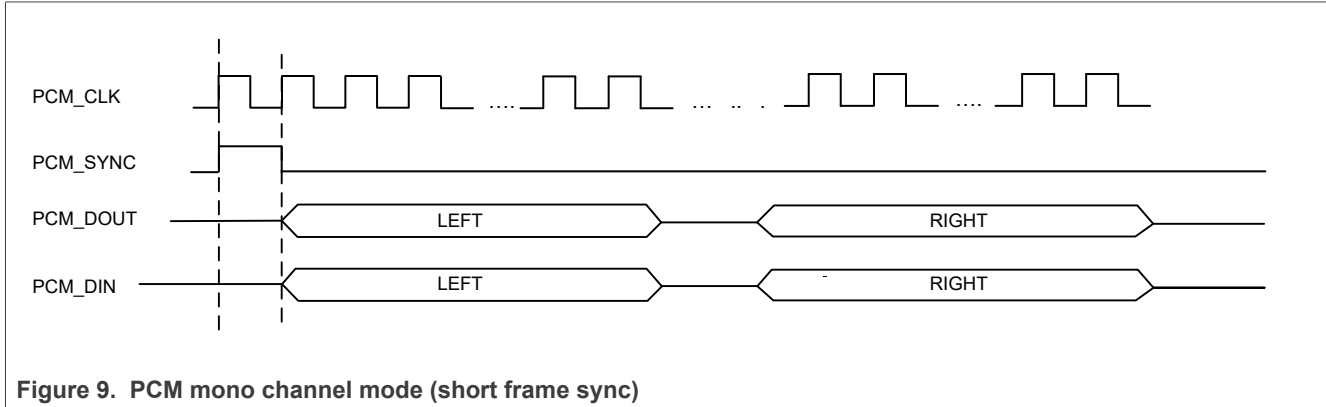


Figure 9. PCM mono channel mode (short frame sync)

In dual-channel mode, the two channels are supported on two time slots.

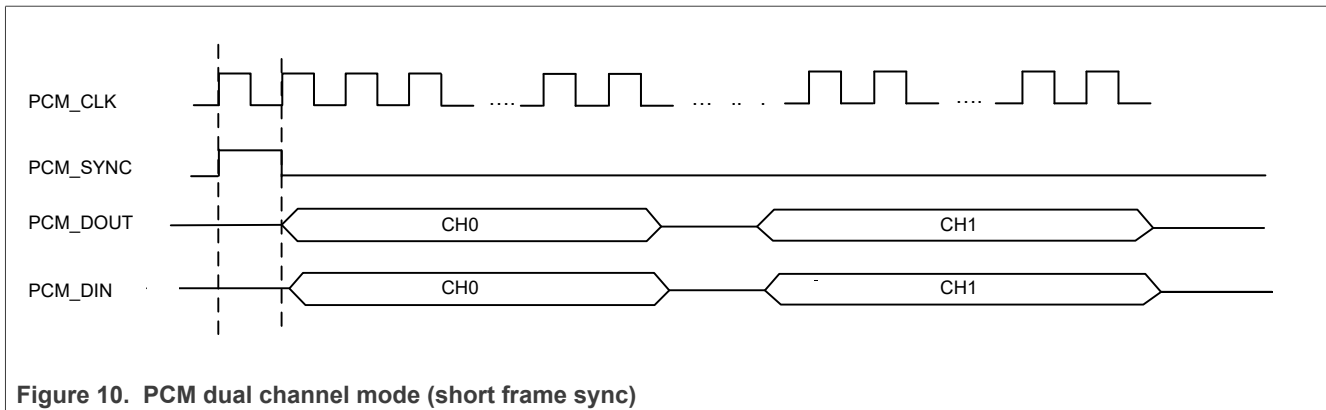


Figure 10. PCM dual channel mode (short frame sync)

3.4.2.2 PCM modes of operation

The PCM interface supports two modes of operation:

- PCM central⁸
- PCM peripheral⁸

When in PCM central⁸ mode, the interface generates a 2 MHz or a 2.048 MHz PCM_CLK and 8 kHz PCM_SYNC signal. An alternative PCM central⁸ mode is available that uses an externally generated PCM_CLK, but still generates the 8 kHz PCM_SYNC. The external PCM_CLK must have a frequency that is an integer multiple of 8 kHz. Supported frequencies are in the 512 kHz to 4 MHz range.

When in PCM peripheral⁸ mode, the interface has both PCM_CLK and PCM_SYNC as inputs, thereby letting another unit on the PCM bus generate the signals.

The PCM interface consists of up to four PCM slots (time divided) preceded by a PCM sync signal. Each PCM slot can be either 8 or 16 bits wide. The slots can be separated in time, but are not required to follow immediately after one other. The timing is relative to PCM_CLK. Figure 12 shows an example of a PCM burst with two slots.

The burst starts with a PCM_SYNC and then follows the PCM burst. In this example, the PCM burst consists of two PCM slots (the first slot is 8 bits wide, the second slot is 16 bits wide) separated with two PCM_CLK clock cycles. The PCM slots can be configured to start at an arbitrary point in time, and the start value is given relative to the start of the PCM_SYNC. The timing of the four PCM slots must be such that slot 0 is always located before slot 1, slot 1 before slot 2, etc. It is possible to only use for example slot 1 and not slot 0.

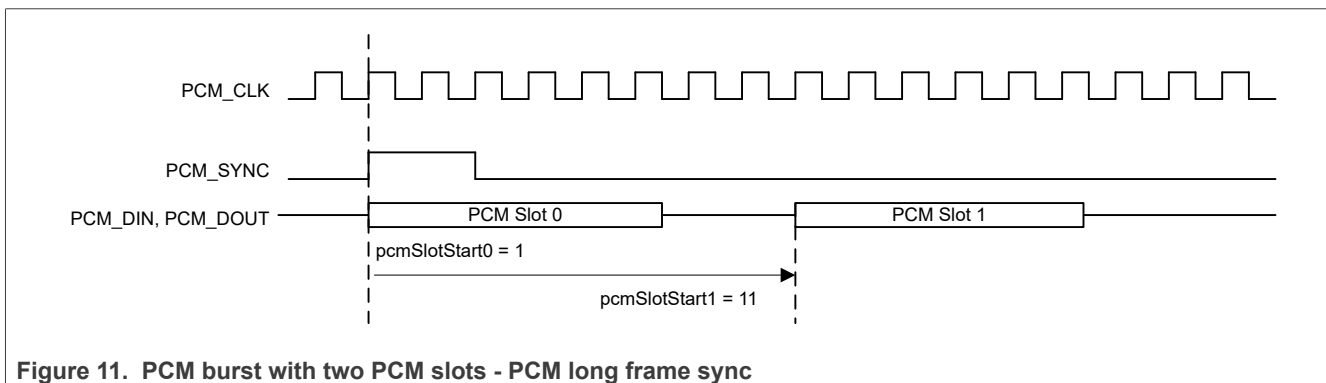


Figure 11. PCM burst with two PCM slots - PCM long frame sync

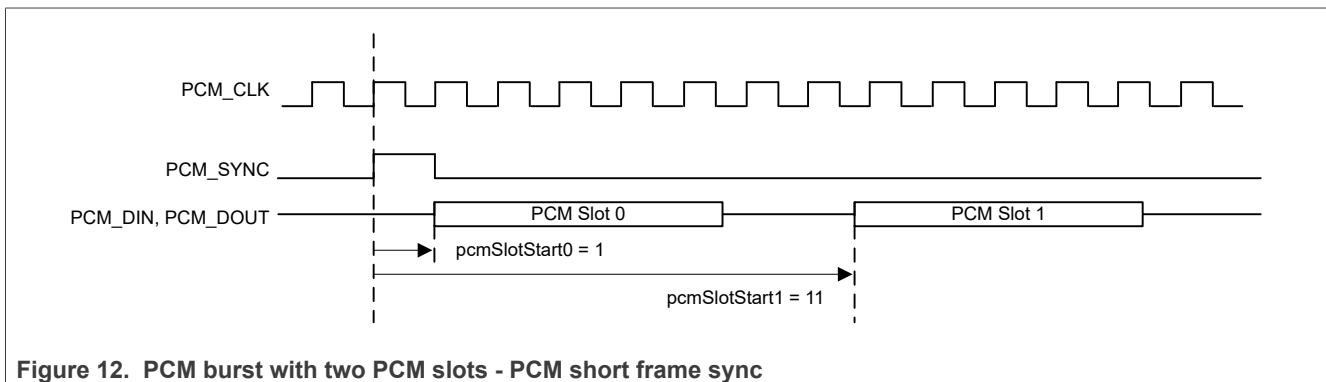


Figure 12. PCM burst with two PCM slots - PCM short frame sync

⁸ The central/peripheral replacement in this document follows the recommendation of Bluetooth SIG.

4 802.15.4 radio subsystem

4.1 802.15.4 radio features

- IEEE 802.15.4-2020 compliant supporting Thread in 2.4 GHz band
- Support for Matter over Thread
- MAC accelerator with packet formatting, CRCs, address check, auto-acknowledgements and timers
- Programmable packet filtering for lower power consumption
- Timestamp for transmit and receive packets
- Received Signal Strength Indication (RSSI) of received packets
- Integrated high power PA up to +21 dBm transmit power
- 128-bit AES security

4.2 802.15.4 host interface

- SPI with maximum clock speed of 10 MHz

5 Revision history

Table 2. Revision history

Document ID	Release date	Data sheet status	Change notice	Supersedes
IW612 v.1.0	20230516	Product brief	-	-

6 Legal information

6.1 Definitions

Draft — A draft status on a document indicates that the content is still under internal review and subject to formal approval, which may result in modifications or additions. NXP Semiconductors does not give any representations or warranties as to the accuracy or completeness of information included in a draft version of a document and shall have no liability for the consequences of use of such information.

6.2 Disclaimers

Limited warranty and liability — Information in this document is believed to be accurate and reliable. However, NXP Semiconductors does not give any representations or warranties, expressed or implied, as to the accuracy or completeness of such information and shall have no liability for the consequences of use of such information. NXP Semiconductors takes no responsibility for the content in this document if provided by an information source outside of NXP Semiconductors.

In no event shall NXP Semiconductors be liable for any indirect, incidental, punitive, special or consequential damages (including - without limitation - lost profits, lost savings, business interruption, costs related to the removal or replacement of any products or rework charges) whether or not such damages are based on tort (including negligence), warranty, breach of contract or any other legal theory.

Notwithstanding any damages that customer might incur for any reason whatsoever, NXP Semiconductors' aggregate and cumulative liability towards customer for the products described herein shall be limited in accordance with the Terms and conditions of commercial sale of NXP Semiconductors.

Right to make changes — NXP Semiconductors reserves the right to make changes to information published in this document, including without limitation specifications and product descriptions, at any time and without notice. This document supersedes and replaces all information supplied prior to the publication hereof.

Suitability for use — NXP Semiconductors products are not designed, authorized or warranted to be suitable for use in life support, life-critical or safety-critical systems or equipment, nor in applications where failure or malfunction of an NXP Semiconductors product can reasonably be expected to result in personal injury, death or severe property or environmental damage. NXP Semiconductors and its suppliers accept no liability for inclusion and/or use of NXP Semiconductors products in such equipment or applications and therefore such inclusion and/or use is at the customer's own risk.

Applications — Applications that are described herein for any of these products are for illustrative purposes only. NXP Semiconductors makes no representation or warranty that such applications will be suitable for the specified use without further testing or modification.

Customers are responsible for the design and operation of their applications and products using NXP Semiconductors products, and NXP Semiconductors accepts no liability for any assistance with applications or customer product design. It is customer's sole responsibility to determine whether the NXP Semiconductors product is suitable and fit for the customer's applications and products planned, as well as for the planned application and use of customer's third party customer(s). Customers should provide appropriate design and operating safeguards to minimize the risks associated with their applications and products.

NXP Semiconductors does not accept any liability related to any default, damage, costs or problem which is based on any weakness or default in the customer's applications or products, or the application or use by customer's third party customer(s). Customer is responsible for doing all necessary testing for the customer's applications and products using NXP Semiconductors products in order to avoid a default of the applications and the products or of the application or use by customer's third party customer(s). NXP does not accept any liability in this respect.

Limiting values — Stress above one or more limiting values (as defined in the Absolute Maximum Ratings System of IEC 60134) will cause permanent damage to the device. Limiting values are stress ratings only and (proper) operation of the device at these or any other conditions above those given in the Recommended operating conditions section (if present) or the Characteristics sections of this document is not warranted. Constant or repeated exposure to limiting values will permanently and irreversibly affect the quality and reliability of the device.

Terms and conditions of commercial sale — NXP Semiconductors products are sold subject to the general terms and conditions of commercial sale, as published at <http://www.nxp.com/profile/terms>, unless otherwise agreed in a valid written individual agreement. In case an individual agreement is concluded only the terms and conditions of the respective agreement shall apply. NXP Semiconductors hereby expressly objects to applying the customer's general terms and conditions with regard to the purchase of NXP Semiconductors products by customer.

No offer to sell or license — Nothing in this document may be interpreted or construed as an offer to sell products that is open for acceptance or the grant, conveyance or implication of any license under any copyrights, patents or other industrial or intellectual property rights.

Quick reference data — The Quick reference data is an extract of the product data given in the Limiting values and Characteristics sections of this document, and as such is not complete, exhaustive or legally binding.

Export control — This document as well as the item(s) described herein may be subject to export control regulations. Export might require a prior authorization from competent authorities.

Suitability for use in non-automotive qualified products — Unless this data sheet expressly states that this specific NXP Semiconductors product is automotive qualified, the product is not suitable for automotive use. It is neither qualified nor tested in accordance with automotive testing or application requirements. NXP Semiconductors accepts no liability for inclusion and/or use of non-automotive qualified products in automotive equipment or applications.

In the event that customer uses the product for design-in and use in automotive applications to automotive specifications and standards, customer (a) shall use the product without NXP Semiconductors' warranty of the product for such automotive applications, use and specifications, and (b) whenever customer uses the product for automotive applications beyond NXP Semiconductors' specifications such use shall be solely at customer's own risk, and (c) customer fully indemnifies NXP Semiconductors for any liability, damages or failed product claims resulting from customer design and use of the product for automotive applications beyond NXP Semiconductors' standard warranty and NXP Semiconductors' product specifications.

Translations — A non-English (translated) version of a document, including the legal information in that document, is for reference only. The English version shall prevail in case of any discrepancy between the translated and English versions.

Security — Customer understands that all NXP products may be subject to unidentified vulnerabilities or may support established security standards or specifications with known limitations. Customer is responsible for the design and operation of its applications and products throughout their lifecycles to reduce the effect of these vulnerabilities on customer's applications and products. Customer's responsibility also extends to other open and/or proprietary technologies supported by NXP products for use in customer's applications. NXP accepts no liability for any vulnerability. Customer should regularly check security updates from NXP and follow up appropriately.

Customer shall select products with security features that best meet rules, regulations, and standards of the intended application and make the ultimate design decisions regarding its products and is solely responsible for compliance with all legal, regulatory, and security related requirements concerning its products, regardless of any information or support that may be provided by NXP.

NXP has a Product Security Incident Response Team (PSIRT) (reachable at PSIRT@nxp.com) that manages the investigation, reporting, and solution release to security vulnerabilities of NXP products.

NXP B.V. - NXP B.V. is not an operating company and it does not distribute or sell products.

6.3 Trademarks

Notice: All referenced brands, product names, service names, and trademarks are the property of their respective owners.

NXP — wordmark and logo are trademarks of NXP B.V.

Tables

Tab. 1. List of supported Wi-Fi channels8 Tab. 2. Revision history 19

Figures

Fig. 1. Application diagram - Single antenna configuration2	Fig. 7. PCM long frame sync 15
Fig. 2. Application diagram - Dual-antenna configuration 2	Fig. 8. PCM short frame sync 15
Fig. 3. I2S interface protocol 12	Fig. 9. PCM mono channel mode (short frame sync) 16
Fig. 4. I2S timing specification diagram—Mono channel mode 13	Fig. 10. PCM dual channel mode (short frame sync) ... 16
Fig. 5. I2S timing specification diagram—Dual channel mode - Single Bluetooth 13	Fig. 11. PCM burst with two PCM slots - PCM long frame sync 17
Fig. 6. I2S timing specification diagram—Dual channel mode - Dual Bluetooth 13	Fig. 12. PCM burst with two PCM slots - PCM short frame sync 17

Contents

1	Product overview	1
1.1	Applications	3
1.2	Product family devices	3
2	Wi-Fi subsystem	4
2.1	IEEE 802.11 standards	4
2.2	Wi-Fi MAC	5
2.3	Wi-Fi baseband	6
2.4	Wi-Fi radio	7
2.5	RF channels	8
2.6	Wi-Fi encryption	9
2.7	Beamforming	9
2.8	Wi-Fi host interface	9
3	Bluetooth subsystem	10
3.1	Bluetooth features	10
3.2	Bluetooth Low Energy (LE) features	11
3.3	Bluetooth host interface	11
3.4	Digital audio interfaces	12
3.4.1	I2S interface	12
3.4.1.1	I2S interface protocol	12
3.4.1.2	Clock frequency and audio data resolutions	14
3.4.2	PCM interface	15
3.4.2.1	PCM protocol	15
3.4.2.2	PCM modes of operation	17
4	802.15.4 radio subsystem	18
4.1	802.15.4 radio features	18
4.2	802.15.4 host interface	18
5	Revision history	19
6	Legal information	20

Please be aware that important notices concerning this document and the product(s) described herein, have been included in section 'Legal information'.