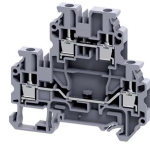
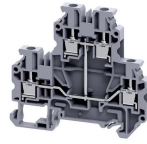


MULTIPLE LEVEL TERMINAL BLOCKS

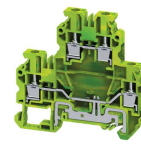
CYDL4



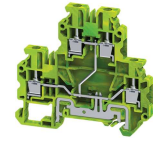
CYDL4(I.S)



CYDLG4



CYDLG4(I.S)



Dimensions & Weight

	CYDL4	CYDL4(I.S)	CYDLG4	CYDLG4(I.S)
Width	6 mm	6 mm	6 mm	6 mm
Length	70.5 mm	70.5 mm	70.5 mm	70.5 mm
Height w DIN Rail	35 x 7.5 mm 35 x 15 mm	65.9 mm 73.4 mm	65.9 mm 73.4 mm	65.9 mm 73.4 mm
Weight per piece	13.8 g	14.7 g	15.9 g	18.0 g

Technical Data/Ratings

Approvals	E220514		60947-7-1		E220514		60947-7-1		E220514		60947-7-1	
Wire Size (solid / stranded)	24-10 AWG		0.2-4.0 mm ²		24-10 AWG		0.2-4.0 mm ²		24-10 AWG		0.2-4.0 mm ²	
Voltage Rating	300 V		800 V AC/DC		300 V		800 V AC/DC		300 V		800 V AC/DC	
Current Rating	30 A		32 A		30 A		32 A		30 A (top level)		32 A (top level)	
Torque	4.5 lb-in		0.5 Nm		4.5 lb-in		0.5 Nm		4.5 lb-in		0.5 Nm	
Insulation Material	Polyamide 66											

Installation Instructions

Wire Stripping Length	9 mm	9 mm	9 mm	9 mm
Screwdriver	Flat Head 0.6 x 3.5 mm	Flat Head 0.6 x 3.5 mm	Flat Head 0.6 x 3.5 mm	Flat Head 0.6 x 3.5 mm

Terminal Blocks

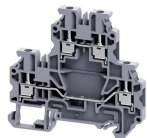
	Cat. No.	Std. Pk.	Cat. No.	Std. Pk.	Cat. No.	Std. Pk.	Cat. No.	Std. Pk.
Grey	CYDL4	50	CYDL4(I.S)	50	CYDLG4	50	CYDLG4(I.S)	50
Red R	CYDL4/R	50	CYDL4(I.S)/R	50	-	-	-	-
Blue BU	CYDL4/BU	50	CYDL4(I.S)/BU	50	-	-	-	-
Black BL	CYDL4/BL	50	CYDL4(I.S)/BL	50	-	-	-	-
Orange O	CYDL4/O	50	CYDL4(I.S)/O	50	-	-	-	-
Green G	CYDL4/G	50	CYDL4(I.S)/G	50	-	-	-	-
Yellow Y	CYDL4/Y	50	CYDL4(I.S)/Y	50	-	-	-	-
White W	CYDL4/W	50	CYDL4(I.S)/W	50	-	-	-	-

Accessories

	Cat. No.	Std. Pk.	Cat. No.	Std. Pk.	Cat. No.	Std. Pk.	Cat. No.	Std. Pk.
End Plate	EPCYDL2.5/4	50	EPCYDL2.5/4	50	EPCYDL2.5/4	50	EPCYDL2.5/4	50
Partition Plate	PPCYDL2.5/4	20	PPCYDL2.5/4	20	PPCYDL2.5/4	20	PPCYDL2.5/4	20
DIN Rail	2511120 CA701-15/S	50 50	2511120 CA701-15/S	50 50	2511120 CA701-15/S	50 50	2511120 CA701-15/S	50 50
End Stop	CA702 CA802 CA103	50 50 50	CA702 CA802 CA103	50 50 50	CA702 CA802 CA103	50 50 50	CA702 CA802 CA103	50 50 50
Shorting Link/Jumpers	JX4/2 JX4/3 JX4/4 JX4/8 JX4/10	100 50 50 10 10	JX4/2 JX4/3 JX4/4 JX4/8 JX4/10	100 50 50 10 10	JX4/2 JX4/3 JX4/4 JX4/8 JX4/10	100 50 50 10 10	JX4/2 JX4/3 JX4/4 JX4/8 JX4/10	100 50 50 10 10
Marking Tag	MT6	1 Pk. (100 tags)	MT6	1 Pk. (100 tags)	MT6	1 Pk. (100 tags)	MT6	1 Pk. (100 tags)

MULTIPLE LEVEL TERMINAL BLOCKS

CYDL2.5



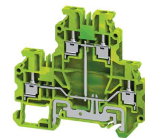
CYDL2.5(I.S)



CYDLG2.5



CYDLG2.5(I.S)



Dimensions & Weight

	CYDL2.5	CYDL2.5(I.S)	CYDLG2.5	CYDLG2.5(I.S)
Width	5 mm	5 mm	5 mm	5 mm
Length	70.5 mm	70.5 mm	70.5 mm	70.5 mm
Height w/ DIN Rail	35 x 7.5 mm 35 x 15 mm	65.9 mm 73.4 mm	65.9 mm 73.4 mm	65.9 mm 73.4 mm
Weight per piece	13.0 g	14.2 g	15.3 g	17.0 g

Technical Data/Ratings

Approvals	E220514		E220514		E220514		E220514	
Wire Size (solid / stranded)	24-12 AWG	0.2-2.5 mm ²	24-12 AWG	0.2-2.5 mm ²	24-12 AWG	0.2-2.5 mm ²	24-12 AWG	0.2-2.5 mm ²
Voltage Rating	300 V	500 V AC/DC	300 V	500 V AC/DC	300 V	500 V AC/DC	300 V	500 V AC/DC
Current Rating	20 A	24 A	20 A	24 A	20 A (top level)	24 A (top level)	20 A	24 A
Torque	3.6 lb-in	0.4 Nm	3.6 lb-in	0.4 Nm	3.6 lb-in	0.4 Nm	3.6 lb-in	0.4 Nm
Insulation Material	Polyamide 66		Polyamide 66		Polyamide 66		Polyamide 66	

Installation Instructions

Wire Stripping Length	8 mm	8 mm	8 mm	8 mm
Screwdriver	Flat Head 0.5 x 3.0 mm	Flat Head 0.5 x 3.0 mm	Flat Head 0.5 x 3.0 mm	Flat Head 0.5 x 3.0 mm

Terminal Blocks

	Cat. No.	Std. Pk.	Cat. No.	Std. Pk.	Cat. No.	Std. Pk.	Cat. No.	Std. Pk.
Grey	CYDL2.5	50	CYDL2.5(I.S)	50	CYDLG2.5	50	CYDLG2.5(I.S)	50
Red R	CYDL2.5/R	50	CYDL2.5(I.S)/R	50	-	-	-	-
Blue BU	CYDL2.5/BU	50	CYDL2.5(I.S)/BU	50	-	-	-	-
Black BL	CYDL2.5/BL	50	CYDL2.5(I.S)/BL	50	-	-	-	-
Orange O	CYDL2.5/O	50	CYDL2.5(I.S)/O	50	-	-	-	-
Green G	CYDL2.5/G	50	CYDL2.5(I.S)/G	50	-	-	-	-
Yellow Y	CYDL2.5/Y	50	CYDL2.5(I.S)/Y	50	-	-	-	-
White W	CYDL2.5/W	50	CYDL2.5(I.S)/W	50	-	-	-	-

Accessories

	Cat. No.	Std. Pk.	Cat. No.	Std. Pk.	Cat. No.	Std. Pk.	Cat. No.	Std. Pk.
End Plate	EPCYDL2.5/4	50	EPCYDL2.5/4	50	EPCYDL2.5/4	50	EPCYDL2.5/4	50
Partition Plate	PPCYDL2.5/4	20	PPCYDL2.5/4	20	PPCYDL2.5/4	20	PPCYDL2.5/4	20
DIN Rail	2511120 CA701-15/S	50 50	2511120 CA701-15/S	50 50	2511120 CA701-15/S	50 50	2511120 CA701-15/S	50 50
End Stop	CA702 CA802 CA103	50 50 50	CA702 CA802 CA103	50 50 50	CA702 CA802 CA103	50 50 50	CA702 CA802 CA103	50 50 50
Shorting Link/ Jumpers	2 pole 3 pole 4 pole 5 pole 6 pole 7 pole 8 pole 10 pole	JX2.5/2 JX2.5/3 JX2.5/4 JX2.5/5 JX2.5/6 JX2.5/7 JX2.5/8 JX2.5/10	100 50 50 50 50 50 10 10	JX2.5/2 JX2.5/3 JX2.5/4 JX2.5/5 JX2.5/6 JX2.5/7 JX2.5/8 JX2.5/10	100 50 50 50 50 50 10 10	JX2.5/2 JX2.5/3 JX2.5/4 JX2.5/5 JX2.5/6 JX2.5/7 JX2.5/8 JX2.5/10	100 50 50 50 50 50 10 10	JX2.5/2 JX2.5/3 JX2.5/4 JX2.5/5 JX2.5/6 JX2.5/7 JX2.5/8 JX2.5/10
Marking Tag	MT5	1 Pk. (100 tags)	MT5	1 Pk. (100 tags)	MT5	1 Pk. (100 tags)	MT5	1 Pk. (100 tags)

FEED THROUGH DOUBLE LEVEL

ODL2.5



ODL2.5(I.S)



ODLG2.5



ODLG2.5(I.S)



Dimensions & Weight

	ODL2.5	ODL2.5(I.S)	ODLG2.5	ODLG2.5(I.S)
Width	5 mm	5 mm	5 mm	5 mm
Length	62.0 mm	62.0 mm	62.0 mm	62.0 mm
Height w DIN Rail 35 x 7.5 mm 35 x 15 mm	63.0 mm 70.5 mm	63.0 mm 70.5 mm	63.0 mm 70.5 mm	63.0 mm 70.5 mm
Weight per piece	13.0 g	14.2 g	15.3 g	17.0 g

Technical Data/Ratings

Approvals	ODL2.5		ODL2.5(I.S)		ODLG2.5		ODLG2.5(I.S)	
Wire Size (solid / stranded)	24-12 AWG	0.2-2.5 mm ²	24-12 AWG	0.2-2.5 mm ²	24-12 AWG	0.2-2.5 mm ²	24-12 AWG	0.2-2.5 mm ²
Voltage Rating	300 V	800 V AC/DC	300 V	800 V AC/DC	300 V	800 V AC/DC	300 V	800 V AC/DC
Current Rating	25 A	24 A	25 A	24 A	25 A	24 A	-	-
Torque	4.5 lb-in	0.4 Nm	4.5 lb-in	0.4 Nm	4.5 lb-in	0.4 Nm	4.5 lb-in	0.4 Nm
Insulation Material	Polyamide 66		Polyamide 66		Polyamide 66		Polyamide 66	

Installation Instructions

Wire Stripping Length	ODL2.5	ODL2.5(I.S)	ODLG2.5	ODLG2.5(I.S)
	8 mm	8 mm	8 mm	8 mm
Screwdriver	Flat Head 0.6 x 3.5 mm	Flat Head 0.6 x 3.5 mm	Flat Head 0.6 x 3.5 mm	Flat Head 0.6 x 3.5 mm

Terminal Blocks

	Cat. No.	Std. Pk.	Cat. No.	Std. Pk.	Cat. No.	Std. Pk.	Cat. No.	Std. Pk.
Grey	ODL2.5	50	ODL2.5(I.S)	50	ODLG2.5	50	ODLG2.5(I.S)	50
Stackable Clip-on	ODL2.5A	50	ODL2.5A(I.S)	50	ODLG2.5A	50	ODLG2.5A(I.S)	50
Red R	ODL2.5/R	50	ODL2.5/R	50	-	-	-	-
Blue BU	ODL2.5/BU	50	ODL2.5/BU	50	-	-	-	-
Black BL	ODL2.5/BL	50	ODL2.5/BL	50	-	-	-	-
Orange O	ODL2.5/O	50	ODL2.5/O	50	-	-	-	-
Green G	ODL2.5/G	50	ODL2.5/G	50	-	-	-	-
Yellow Y	ODL2.5/Y	50	ODL2.5/Y	50	-	-	-	-
White W	ODL2.5/W	50	ODL2.5/W	50	-	-	-	-

Accessories

	Cat. No.	Std. Pk.	Cat. No.	Std. Pk.	Cat. No.	Std. Pk.	Cat. No.	Std. Pk.
End Plate	EP0DL2.5	50	EP0DL2.5	50	EP0DL2.5	50	EP0DL2.5	50
Front Side	EP10DL2.5	50	EP10DL2.5	50	EP10DL2.5	50	EP10DL2.5	50
Back Side								
DIN Rail	2511120	20	2511120	20	2511120	20	2511120	20
35mm	CA701-15/S	20	CA701-15/S	20	CA701-15/S	20	CA701-15/S	20
End Stop	CA702	50	CA702	50	CA702	50	CA702	50
	CA802	50	CA802	50	CA802	50	CA802	50
	CA202	25	CA202	25	CA202	25	CA202	25
Shorting Link/Jumpers	JX2.5/2	100	JX2.5/2	100	JX2.5/2	100	JX2.5/2	100
2 pole	JX2.5/3	50	JX2.5/3	50	JX2.5/3	50	JX2.5/3	50
3 pole	JX2.5/4	50	JX2.5/4	50	JX2.5/4	50	JX2.5/4	50
4 pole	JX2.5/5	50	JX2.5/5	50	JX2.5/5	50	JX2.5/5	50
5 pole	JX2.5/6	10	JX2.5/6	10	JX2.5/6	10	JX2.5/6	10
6 pole	JX2.5/7	10	JX2.5/7	10	JX2.5/7	10	JX2.5/7	10
7 pole	JX2.5/8	10	JX2.5/8	10	JX2.5/8	10	JX2.5/8	10
8 pole	JX2.5/10	10	JX2.5/10	10	JX2.5/10	10	JX2.5/10	10
10 pole								
Marking Tag	MT5	1 Pk. (100 tags)	MT5	1 Pk. (100 tags)	MT5	1 Pk. (100 tags)	MT5	1 Pk. (100 tags)