

SPECIFICATIONS

ELECTRICAL

RESISTANCE----- 10K OHMS
 RESISTANCE TOLERANCE----- ±20%
 LINEARITY (INDEPENDENT)----- ±5.0%
 POWER RATING----- 0.1 WATT
 LEVER ELECTRICAL ANGLE----- 40° MAX.
 RESOLUTION----- ESSENTIALLY INFINITE
 OUTPUT SMOOTHNESS----- BELOW 0.2% AGAINST INPUT VOLTAGE
 CONTACT RESISTANCE VARIATION----- BELOW 6% C.R.V.
 INSULATION RESISTANCE----- 1000 MEGA OHMS @ 500VDC.
 DIELECTRIC STRENGTH----- 1 MINUTE AT 500 VAC
 MAX. WIPER OUTPUT----- 10MICRO AMP RECOMMENDED, 1 mA MAX.
 SWITCH RATING----- 0.1AMP AT 30 VDC

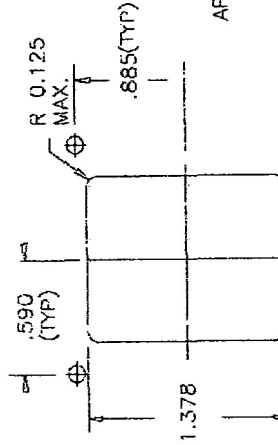
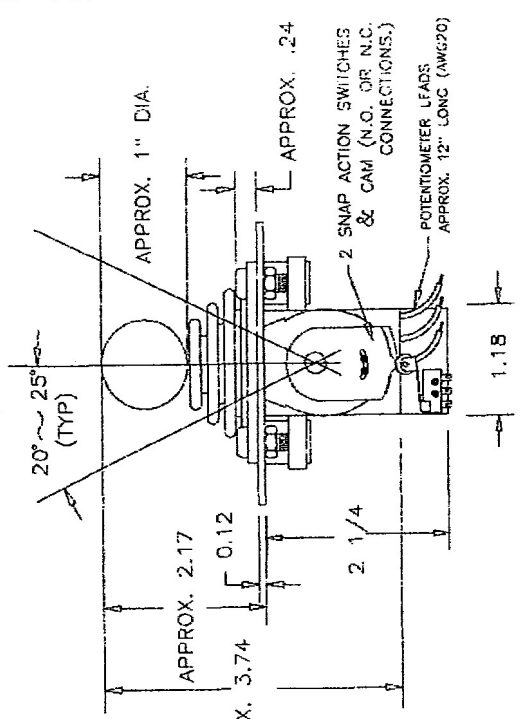
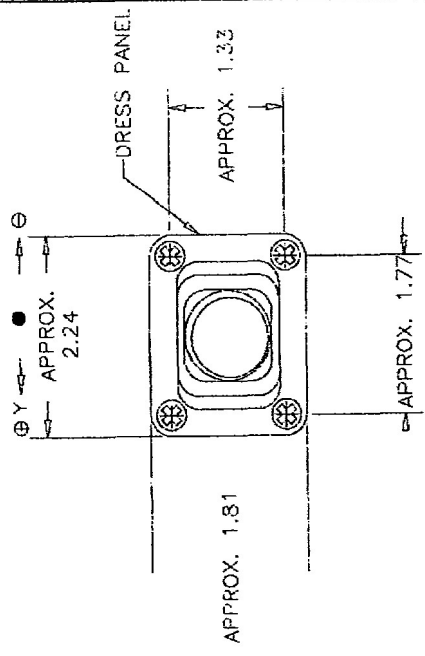
MECHANICAL

RANGE OF OPERATING LEVER----- ±20° ~ ±25° FROM CENTER
 OPERATING FORCE----- APPROX. 19.4 OZ.-F.
 OPERATING TEMPERATURE----- -20°C TO +60°C
 LIFE EXPECTANCY----- 2 MILLION OPERATIONS
 WEIGHT----- APPROX. 21 OZ.
 SHOCK----- 1.0 OZ.

MATERIALS

HOUSING----- HIGH TEMP. THERMO PLASTIC
 ELEMENT----- CONDUCTIVE PLASTIC

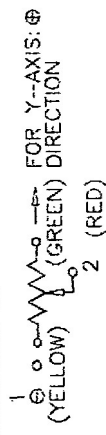
SWITCHING EVENTS
 'Y' FORWARD SWITCH 'ON'(OFF WHEN BACK OR CENTER)
 'Y' BACK SWITCH 'ON'(OFF WHEN FORWARD OR CENTER)
 'I' LEVER OPERATION



NOMENCLATURE

- J3L-IR12-SB
- 1 RUBBER BOOT
- 2 MOUNTING PANEL (S) SPRING RETURN (F) FRICTION HOLD
- 2 No. OF SWITCHES
- No. OF POTENTIOMETERS. (1 POSSIBLE)
- HANDLE DESIGN
- LEVER DIRECTION
- JOYSTICK SERIES

SCHEMATIC



0.216 DIA. MOUNTING HOLES FOR USE WITH MOUNTING PANEL 4 PLACES.

TITLE

Precision Sales & Equipment Inc.

SCALE NONE

AI 610-359-1002

CODE ID FAX 610-353-1674

PART NO.

J3L-IR12-SB

JOYSTICK