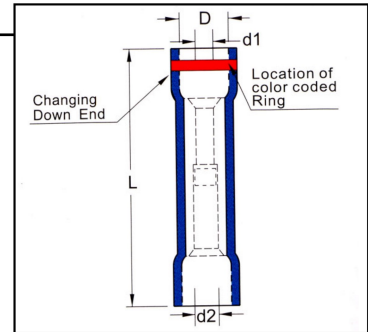


Vinyl Insulated Step Down Butt Connectors

Material: Tin Plated Copper
Maximum Electrical Rating: 75°C, 600V
Insulation Material: 6/6 Nylon
Inside Sleeve Material: Tin Plated Copper
Barrel: Tubular

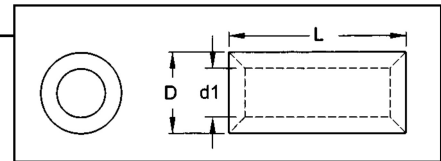


| HOFFMAN PART NO. | WIRE SIZE | AMPS | DIMENSIONS (INCHES) | | | | UL | TAPE MOUNTED REEL QTY | DIE FOR TAPE MOUNTED | HAND TOOL |
|------------------|----------------|--------|---------------------|------|------|------|----|-----------------------|----------------------|-----------|
| | | | L | D | d1 | d2 | | | | |
| FVC1614DW | 16-14 to 22-16 | 9-18 | .965 | .177 | .067 | .091 | Y | NA | NA | YNM2210D |
| FVC1210SDW | 12-10 TO 22-16 | 9-50 | 1.220 | .248 | .067 | .134 | Y | NA | NA | |
| FVC1210DW | 12-10-16-14 | 18-50 | 1.220 | .248 | .091 | .134 | Y | NA | NA | |
| FVC8SDW | 8 to 16-14 | 18-70 | 1.406 | .335 | .091 | .177 | Y | NA | NA | YNM86 |
| FVC8DW | 8 to 12-10 | 35-70 | 1.406 | .335 | .134 | .177 | Y | NA | NA | |
| FVC6DW | 4 to 8 | 70-125 | 1.172 | .413 | .177 | .232 | Y | NA | NA | |

Parallel Connectors

Non-Insulated Parallel Connectors

Material: Tin Plated Copper
Maximum Electrical Rating: 176°C
Barrel Type: Tubular



| HOFFMAN PART NO. | WIRE SIZE | WIRE COMBINATION | | AMPS | DIMENSIONS (INCHES) | | | | UL | TAPE MOUNT REEL QTY | DIE FOR TAPE MOUNTED | HAND TOOL |
|------------------|-------------|------------------|--------------------|---------|---------------------|-------|-------|-------|----|---------------------|----------------------|---------------------|
| | | MIN | MAX | | L | D | d1 | T | | | | |
| P2216 | 22-16 | 2 #22 | 1 #18 + 1 #20 | 9 - 18 | 0.315 | 0.130 | 0.067 | 0.031 | Y | NA | NA | YHM228 |
| P2216/J | 22-16 | 2 #22 | 2 #18 | 9 - 18 | 0.315 | 0.130 | 0.067 | 0.031 | Y | NA | NA | |
| P1614 | 16-14 | 2 #16 | 1 #18 + 1 #20 | 18 - 30 | 0.315 | 0.154 | 0.091 | 0.031 | Y | NA | NA | YHT2210 |
| P1614/J | 16-14 | 2 #22 | 1 #18 + 1 #16 | 18 - 30 | 0.315 | 0.161 | 0.091 | 0.031 | Y | NA | NA | |
| P1210 | 12-10 | 2 #18 | 2 #16 | 35 - 50 | 0.335 | 0.213 | 0.134 | 0.039 | Y | NA | NA | YHM228 |
| P1210/J | 12-10 | 2 #18 | 2 #16 | 35 - 50 | 0.335 | 0.213 | 0.134 | 0.039 | Y | NA | NA | |
| P8R1 | 8 | 1 #10 + 1 #16 | 2 #12 | 70 | 0.374 | 0.276 | 0.181 | 0.047 | Y | NA | NA | YHT8S |
| P8R1/J | 8 | 2 #12 | 1 #12 + 1 #10 | 70 | 0.374 | 0.276 | 0.177 | 0.049 | Y | NA | NA | |
| P6R1 | 6 | 1 #8 + 1 #12 | 2 #10 | 95 | 0.433 | 0.350 | 0.232 | 0.059 | Y | NA | NA | *604 Hydraulic Head |
| P6R1/J | 6 | 1 #12 + 1 #18 | 2 #10 | 95 | 0.433 | 0.350 | 0.228 | 0.061 | Y | NA | NA | |
| P4R1 | 4 | 1 #8 + 1 #12 | 2 #8 | 125 | 0.531 | 0.445 | 0.307 | 0.069 | Y | NA | NA | *603 Hydraulic Head |
| P4R1/J | 4 | 1 #8 + 1 #6 | 2 #8 | 125 | 0.531 | 0.445 | 0.303 | 0.071 | Y | NA | NA | |
| P2R1 | 2 | 2 #6 | 4 #8 | 170 | 0.650 | 0.520 | 0.374 | 0.073 | Y | NA | NA | NA |
| P1/OR1 | 1/0 | 2 #4 | 2 #6 | 230 | 0.748 | 0.602 | 0.449 | 0.077 | Y | NA | NA | |
| P2/OR1 | 2/0 | 2 #2 | 1 #6 + 1 # 1/0 | 265 | 0.748 | 0.689 | 0.524 | 0.083 | Y | NA | NA | NA |
| P3/OR1 | 3/0 | 1 #4 + 1 #2/0 | 1 #4 + 1 #2/0 | 310 | 0.768 | 0.768 | 0.571 | 0.098 | Y | NA | NA | |
| P4/OR1 | 4/0 | 2 #2/0 | 2 #2/0 | 360 | 0.787 | 0.870 | 0.646 | 0.112 | Y | NA | NA | NA |
| P150R1 | 250-300MCM | 2 #2/0 | 1 #10 + 1 #3/0 | 405-445 | 1.063 | 1.039 | 0.768 | 0.136 | Y | NA | NA | |
| P250R1 | 350MCM | 2 #3/0 | 1 #2/0 + 1 #4/0 | 505 | 1.122 | 1.122 | 0.827 | 0.148 | Y | NA | NA | NA |
| P300R1 | 400-500 MCM | 2 #4/0 | 1 #2/0 + 1 #250MCM | 545-620 | 1.260 | 1.276 | 0.945 | 0.165 | Y | NA | NA | |

* Refer to Tool Selector Chart (page 92-93) for Tool Die Numbers.

