




**SPECIFICATION SHEET**

|                                |                                                                                                                                                                                                                                                                                                                                                  |
|--------------------------------|--------------------------------------------------------------------------------------------------------------------------------------------------------------------------------------------------------------------------------------------------------------------------------------------------------------------------------------------------|
| <b>SPECIFICATION SHEET NO.</b> | Q0726-SMAP4SMA6V8CAC                                                                                                                                                                                                                                                                                                                             |
| <b>DATE</b>                    | July 26, 2023                                                                                                                                                                                                                                                                                                                                    |
| <b>REVISION</b>                | A0                                                                                                                                                                                                                                                                                                                                               |
| <b>DESCRIPTION</b>             | <p>SMD Transient Voltage Suppressor (TVs) Diodes, SMA/DO-214AC series, P4SMA6.8CA Type, 2 Pads, Bidirectional</p> <p><a href="#">Breakdown Voltage (V BR) 6.8V Average Value.</a></p> <p>Peak Pulse Power: 400 Watts.</p> <p>Operating Temp. Range -55°C ~+150°C</p> <p>Package in Tape/Reel, 5000pcs/13"Reel</p> <p>RoHS/RoHS III compliant</p> |
| <b>CUSTOMER</b>                |                                                                                                                                                                                                                                                                                                                                                  |
| <b>CUSTOMER PART NUMBER</b>    |                                                                                                                                                                                                                                                                                                                                                  |
| <b>CROSS REF. PART NUMBER</b>  |                                                                                                                                                                                                                                                                                                                                                  |
| <b>ORIGINAL PART NUMBER</b>    | MDD P4SMA6.8CA                                                                                                                                                                                                                                                                                                                                   |
| <b>PART CODE</b>               | SMAP4SMA6V8CAC                                                                                                                                                                                                                                                                                                                                   |

|                         |                                                                                       |                                                                                      |
|-------------------------|---------------------------------------------------------------------------------------|--------------------------------------------------------------------------------------|
| <b>VENDOR APPROVE</b>   |                                                                                       |                                                                                      |
| Issued/Checked/Approved |    |  |
|                         |  |                                                                                      |
| DATE: July 26, 2023     |                                                                                       |                                                                                      |

|                         |
|-------------------------|
| <b>CUSTOMER APPROVE</b> |
|                         |
| DATE:                   |

**SMD TRANSIENT VOLTAGE SUPPRESSORS DIODES SMA SERIES**



**MAIN FEATURE**

- The plastic package carries Underwriters Laboratory Flammability Classification 94V-0
- Low profile package
- Glass Passivated Die Construction
- Low inductance
- 6.8V - 550V Standoff Voltages Average Value
- Excellent clamping capability
- 400W peak pulse power capability at 10/1000µs waveform
- Fast response time

**APPLICATION**

- I/O interface
- AC/DC power supply
- Low frequency signal transmission line (RS232, RS485, etc.)

**RFQ**

[Request For Quotation](#)

**PART CODE GUIDE**

| SMA | P4SMA6V8CA | C |
|-----|------------|---|
| 1   | 2          | 3 |

- 1) **SMA**: SMD Transient Voltage Suppressor (TVs) Diodes, SMA /DO-214AC series,
- 2) **P4SMA6V8CA**: Type code for original part number P4SMA6.8CA
- 3) **C**: Internal Control Code, (A~Z or 1~9 or Blank) or custom parametric data code.

**SMD TRANSIENT VOLTAGE SUPPRESSORS DIODES SMA SERIES**

**DIMENSION (Unit: Inch/mm)**

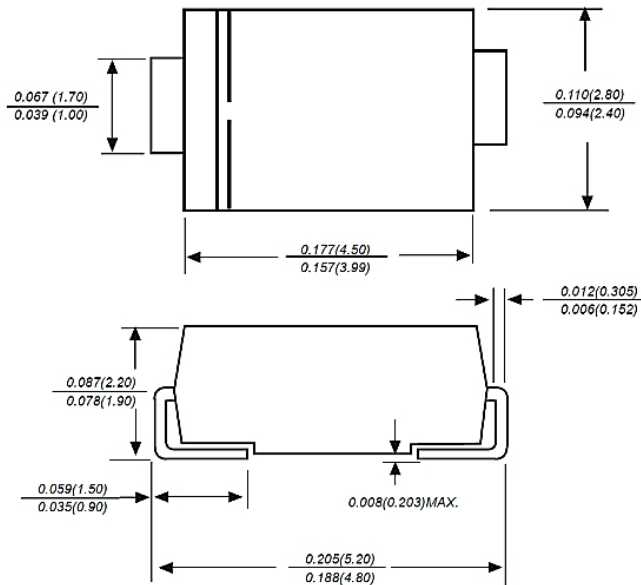
Image for reference



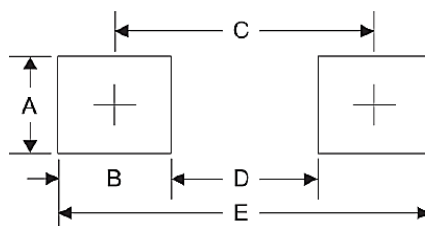
Marking: standard

\* See Marking Code List

SMA/DO-214AC



Recommend Pad Layout



| Symbol | Unit (Inch) | Unit (mm) |
|--------|-------------|-----------|
| A      | 0.066       | 1.680     |
| B      | 0.060       | 1.520     |
| C      | 0.154       | 3.900     |
| D      | 0.095       | 2.410     |
| E      | 0.215       | 5.450     |

**SMD TRANSIENT VOLTAGE SUPPRESSORS DIODES SMA SERIES**

**MECHANICAL DATA**

| Case                                   | Terminals                               | Polarity                                                                     | Marking               | Weight per piece            |
|----------------------------------------|-----------------------------------------|------------------------------------------------------------------------------|-----------------------|-----------------------------|
| JEDEC SMA/DO-214AC molded plastic body | Solderable per MIL-STD-750, Method 2026 | Cathode Band<br><br>(Note: Bi-directional device have no polarity indicator) | See Marking Code List | 0.00095ounce,<br>0.027grams |

**MAX. RATING & CHARACTERISTICS - Ratings at 25°C Ambient Temperature Unless Otherwise Specified.**

| Parameter                                                     |         | SYMBOLS | VALUE                      | UNITS |
|---------------------------------------------------------------|---------|---------|----------------------------|-------|
| Peak Pulse Power Dissipation on TA=25°C<br>(Note 1,2,4, Fig1) |         | P ppm   | 400                        | W     |
| Peak Forward Surge Current (Note 3, Fig4 )                    |         | I FSM   | 60                         | A     |
| Peak Pulse Current on 10/1000 us waveform (Note 1)            |         | I PPM   | <i>See Table 1~Table 6</i> | W     |
| ESD Voltage per IEC6100-4-2                                   | Contact | V ESD1  | ± 30                       | kV    |
|                                                               | Air     | V ESD2  | ± 30                       | kV    |
| Typical Thermal Resistance Junction to Ambient (Note 2)       |         | R ΘJA   | 100                        | °C/W  |
| Operating junction temperature range                          |         | T J     | -55 ~ +150                 | °C    |
| Storage temperature range                                     |         | T stg   | -55 ~ +150                 | °C    |

Notes

1. Non-repetitive current pulse, per Fig 3 and derated above TA=25 °C per Fig 2
2. Mounted on 5.0\*5.0mm (Thickness 0.03mm) copper pads to each terminal
3. Peak Forward Surge Current : 8.3ms single half sine-wave Superimposed on rated load (JEDEC method).
4. Peak pulse power waveform is 10/1000µS.

**SMD TRANSIENT VOLTAGE SUPPRESSORS DIODES SMA SERIES**
**UNIDIRECTIONAL TYPE- ELECTRICAL CHARACTERISTICS - Ta = 25°C**

Table 1

| Part Code      | Reverse Stand-off Voltage | Breakdown Voltage |      | Test Current | Reverse Leakage | Max. Clamp Voltage | Peak Pulse Current | Marking Code |
|----------------|---------------------------|-------------------|------|--------------|-----------------|--------------------|--------------------|--------------|
|                |                           | V BR @ I T        |      |              |                 |                    |                    |              |
|                | V RMV                     | Min               | Max  | I T          | I R @ V RWM     | V C @ I PPM        | I PPM              |              |
|                | V                         | V                 | V    | mA           | µA              | V                  | A                  |              |
| SMAP4SMA6V8ASA | 5.8V                      | 6.45              | 7.14 | 10           | 1000            | 10.5               | 39.0               | 6V8A         |
| SMAP4SMA7V5ASA | 6.4                       | 7.13              | 7.88 | 10           | 500             | 11.3               | 36.3               | 7V5A         |
| SMAP4SMA8V2ASA | 7.02                      | 7.79              | 8.61 | 10           | 200             | 12.1               | 33.9               | 8V2A         |
| SMAP4SMA9V1ASA | 7.78                      | 8.65              | 9.55 | 1            | 50              | 13.4               | 30.6               | 9V1A         |
| SMAP4SMA10AS0A | 8.55                      | 9.5               | 10.5 | 1            | 10              | 14.5               | 28.3               | 10A          |
| SMAP4SMA11AS0A | 9.4                       | 10.5              | 11.6 | 1            | 5               | 15.6               | 26.3               | 11A          |
| SMAP4SMA12AS0A | 10.2                      | 11.4              | 12.6 | 1            | 5               | 16.7               | 24.6               | 12A          |
| SMAP4SMA13AS0A | 11.1                      | 12.4              | 13.7 | 1            | 1               | 18.2               | 22.5               | 13A          |
| SMAP4SMA15AS0A | 12.8                      | 14.3              | 15.8 | 1            | 1               | 21.2               | 19.3               | 15A          |
| SMAP4SMA16AS0A | 13.6                      | 15.2              | 16.8 | 1            | 1               | 22.5               | 18.2               | 16A          |
| SMAP4SMA18AS0A | 15.3                      | 17.1              | 18.9 | 1            | 1               | 25.5               | 16.1               | 18A          |
| SMAP4SMA20AS0A | 17.1                      | 19                | 21   | 1            | 1               | 27.7               | 14.8               | 20A          |
| SMAP4SMA22AS0A | 18.8                      | 20.9              | 23.1 | 1            | 1               | 30.6               | 13.4               | 22A          |
| SMAP4SMA24AS0A | 20.5                      | 22.8              | 25.2 | 1            | 1               | 33.2               | 12.3               | 24A          |
| SMAP4SMA27AS0A | 23.1                      | 25.7              | 28.4 | 1            | 1               | 37.5               | 10.9               | 27A          |
| SMAP4SMA30AS0A | 25.6                      | 28.5              | 31.5 | 1            | 1               | 41.4               | 9.9                | 30A          |
| SMAP4SMA33AS0A | 28.2                      | 31.4              | 34.7 | 1            | 1               | 45.7               | 9                  | 33A          |
| SMAP4SMA36AS0A | 30.8                      | 34.2              | 37.8 | 1            | 1               | 49.9               | 8.2                | 36A          |
| SMAP4SMA39AS0A | 33.3                      | 37.1              | 41   | 1            | 1               | 53.9               | 7.6                | 39A          |

**SMD TRANSIENT VOLTAGE SUPPRESSORS DIODES SMA SERIES**
**UNIDIRECTIONAL TYPE- ELECTRICAL CHARACTERISTICS - Ta = 25°C**

Table 2

| Part Code      | Reverse Stand-off Voltage | Breakdown Voltage |      | Test Current | Reverse Leakage | Max. Clamp Voltage | Peak Pulse Current | Marking Code |
|----------------|---------------------------|-------------------|------|--------------|-----------------|--------------------|--------------------|--------------|
|                |                           | V BR @ I T        |      |              |                 |                    |                    |              |
|                | V RMV                     | Min               | Max  | I T          | I R @ V RWM     | V C @ I PPM        | I PPM              |              |
| V              | V                         | V                 | mA   | µA           | V               | A                  |                    |              |
| SMAP4SMA43AS0A | 36.8                      | 40.9              | 45.2 | 1            | 1               | 59.3               | 6.9                | 43A          |
| SMAP4SMA47AS0A | 40.2                      | 44.7              | 49.4 | 1            | 1               | 64.8               | 6.3                | 47A          |
| SMAP4SMA51AS0A | 43.6                      | 48.5              | 53.6 | 1            | 1               | 70.1               | 5.8                | 51A          |
| SMAP4SMA56AS0A | 47.8                      | 53.2              | 58.8 | 1            | 1               | 77                 | 5.3                | 56A          |
| SMAP4SMA62AS0A | 53                        | 58.9              | 65.1 | 1            | 1               | 85                 | 4.8                | 62A          |
| SMAP4SMA68AS0A | 58.1                      | 64.6              | 71.4 | 1            | 1               | 92                 | 4.5                | 68A          |
| SMAP4SMA75AS0A | 64.1                      | 71.3              | 78.8 | 1            | 1               | 103                | 4                  | 75A          |
| SMAP4SMA82AS0A | 70.1                      | 77.9              | 86.1 | 1            | 1               | 113                | 3.6                | 82A          |
| SMAP4SMA91AS0A | 77.8                      | 86.5              | 95.5 | 1            | 1               | 125                | 3.3                | 91A          |
| SMAP4SMA100ASA | 85.5                      | 95                | 105  | 1            | 1               | 137                | 3                  | 100A         |
| SMAP4SMA110ASA | 94                        | 105               | 116  | 1            | 1               | 152                | 2.7                | 110A         |
| SMAP4SMA120ASA | 102                       | 114               | 126  | 1            | 1               | 165                | 2.5                | 120A         |
| SMAP4SMA130ASA | 111                       | 124               | 137  | 1            | 1               | 179                | 2.3                | 130A         |
| SMAP4SMA150ASA | 128                       | 143               | 158  | 1            | 1               | 207                | 2                  | 150A         |
| SMAP4SMA160ASA | 136                       | 152               | 168  | 1            | 1               | 219                | 1.9                | 160A         |
| SMAP4SMA170ASA | 145                       | 162               | 179  | 1            | 1               | 234                | 1.8                | 170A         |
| SMAP4SMA180ASA | 154                       | 171               | 189  | 1            | 1               | 246                | 1.7                | 180A         |
| SMAP4SMA200ASA | 171                       | 190               | 210  | 1            | 1               | 274                | 1.5                | 200A         |
| SMAP4SMA220ASA | 185                       | 209               | 231  | 1            | 1               | 328                | 1.3                | 220A         |

**SMD TRANSIENT VOLTAGE SUPPRESSORS DIODES SMA SERIES**

**UNIDIRECTIONAL TYPE- ELECTRICAL CHARACTERISTICS - Ta = 25°C**

Table 3

| Part Code      | Reverse Stand-off Voltage | Breakdown Voltage |       | Test Current | Reverse Leakage | Max. Clamp Voltage | Peak Pulse Current | Marking Code |
|----------------|---------------------------|-------------------|-------|--------------|-----------------|--------------------|--------------------|--------------|
|                |                           | V BR @ I T        |       |              |                 |                    |                    |              |
|                | V RMV                     | Min               | Max   | I T          | I R @ V RWM     | V C @ I PPM        | I PPM              |              |
|                | V                         | V                 | V     | mA           | µA              | V                  | A                  |              |
| SMAP4SMA250ASA | 214                       | 237               | 263   | 1            | 1               | 344                | 1.2                | 250A         |
| SMAP4SMA300ASA | 256                       | 285               | 315   | 1            | 1               | 414                | 1                  | 300A         |
| SMAP4SMA350ASA | 300                       | 332               | 368   | 1            | 1               | 482                | 0.9                | 350A         |
| SMAP4SMA400ASA | 342                       | 380               | 420   | 1            | 1               | 548                | 0.8                | 400A         |
| SMAP4SMA440ASA | 376                       | 418               | 462   | 1            | 1               | 602                | 0.7                | 440A         |
| SMAP4SMA480ASA | 408                       | 456               | 504   | 1            | 1               | 658                | 0.6                | 480A         |
| SMAP4SMA510ASA | 434                       | 485               | 535   | 1            | 1               | 698                | 0.6                | 510A         |
| SMAP4SMA530ASA | 451                       | 503.5             | 556.5 | 1            | 1               | 725                | 0.6                | 530A         |
| SMAP4SMA540ASA | 460                       | 513               | 567   | 1            | 1               | 740                | 0.5                | 540A         |
| SMAP4SMA550ASA | 468                       | 522.5             | 577.5 | 1            | 1               | 760                | 0.5                | 550A         |

**SMD TRANSIENT VOLTAGE SUPPRESSORS DIODES SMA SERIES**

**BIDIRECTIONAL TYPE- ELECTRICAL CHARACTERISTICS - Ta = 25°C**

Table 4

| Part Code      | Reverse Stand-off Voltage | Breakdown Voltage |      | Test Current | Reverse Leakage | Max. Clamp Voltage | Peak Pulse Current | Marking Code |
|----------------|---------------------------|-------------------|------|--------------|-----------------|--------------------|--------------------|--------------|
|                |                           | V BR @ I T        |      |              |                 |                    |                    |              |
|                | V RMV                     | Min               | Max  | I T          | I R @ V RWM     | V C @ I PPM        | I PPM              |              |
|                | V                         | V                 | V    | mA           | µA              | V                  | A                  |              |
| SMAP4SMA6V8CAC | 5.8V                      | 6.45              | 7.14 | 10           | 1000            | 10.5               | 39.0               | 6V8C         |
| SMAP4SMA7V5CAC | 6.4                       | 7.13              | 7.88 | 10           | 500             | 11.3               | 36.3               | 7V5C         |
| SMAP4SMA8V2CAC | 7.02                      | 7.79              | 8.61 | 10           | 200             | 12.1               | 33.9               | 8V2C         |
| SMAP4SMA9V1CAC | 7.78                      | 8.65              | 9.55 | 1            | 50              | 13.4               | 30.6               | 9V1C         |
| SMAP4SMA10CASC | 8.55                      | 9.5               | 10.5 | 1            | 10              | 14.5               | 28.3               | 10C          |
| SMAP4SMA11CASC | 9.4                       | 10.5              | 11.6 | 1            | 5               | 15.6               | 26.3               | 11C          |
| SMAP4SMA12CASC | 10.2                      | 11.4              | 12.6 | 1            | 5               | 16.7               | 24.6               | 12C          |
| SMAP4SMA13CASC | 11.1                      | 12.4              | 13.7 | 1            | 1               | 18.2               | 22.5               | 13C          |
| SMAP4SMA15CASC | 12.8                      | 14.3              | 15.8 | 1            | 1               | 21.2               | 19.3               | 15C          |
| SMAP4SMA16CASC | 13.6                      | 15.2              | 16.8 | 1            | 1               | 22.5               | 18.2               | 16C          |
| SMAP4SMA18CASC | 15.3                      | 17.1              | 18.9 | 1            | 1               | 25.5               | 16.1               | 18C          |
| SMAP4SMA20CASC | 17.1                      | 19                | 21   | 1            | 1               | 27.7               | 14.8               | 20C          |
| SMAP4SMA22CASC | 18.8                      | 20.9              | 23.1 | 1            | 1               | 30.6               | 13.4               | 22C          |
| SMAP4SMA24CASC | 20.5                      | 22.8              | 25.2 | 1            | 1               | 33.2               | 12.3               | 24C          |
| SMAP4SMA27CASC | 23.1                      | 25.7              | 28.4 | 1            | 1               | 37.5               | 10.9               | 27C          |
| SMAP4SMA30CASC | 25.6                      | 28.5              | 31.5 | 1            | 1               | 41.4               | 9.9                | 30C          |
| SMAP4SMA33CASC | 28.2                      | 31.4              | 34.7 | 1            | 1               | 45.7               | 9                  | 33C          |
| SMAP4SMA36CASC | 30.8                      | 34.2              | 37.8 | 1            | 1               | 49.9               | 8.2                | 36C          |
| SMAP4SMA39CASC | 33.3                      | 37.1              | 41   | 1            | 1               | 53.9               | 7.6                | 39C          |



**SMD TRANSIENT VOLTAGE SUPPRESSORS DIODES SMA SERIES**

**BIDIRECTIONAL TYPE- ELECTRICAL CHARACTERISTICS - Ta = 25°C**

Table 5

| Part Code      | Reverse Stand-off Voltage | Breakdown Voltage |      | Test Current | Reverse Leakage | Max. Clamp Voltage | Peak Pulse Current | Marking Code |
|----------------|---------------------------|-------------------|------|--------------|-----------------|--------------------|--------------------|--------------|
|                |                           | V BR @ I T        |      |              |                 |                    |                    |              |
|                | V RMV                     | Min               | Max  | I T          | I R @ V RWM     | V C @ I PPM        | I PPM              |              |
|                | V                         | V                 | V    | mA           | µA              | V                  | A                  |              |
| SMAP4SMA43CASC | 36.8                      | 40.9              | 45.2 | 1            | 1               | 59.3               | 6.9                | 43AC         |
| SMAP4SMA47CASC | 40.2                      | 44.7              | 49.4 | 1            | 1               | 64.8               | 6.3                | 47C          |
| SMAP4SMA51CASC | 43.6                      | 48.5              | 53.6 | 1            | 1               | 70.1               | 5.8                | 51C          |
| SMAP4SMA56CASC | 47.8                      | 53.2              | 58.8 | 1            | 1               | 77                 | 5.3                | 56C          |
| SMAP4SMA62CASC | 53                        | 58.9              | 65.1 | 1            | 1               | 85                 | 4.8                | 62C          |
| SMAP4SMA68CASC | 58.1                      | 64.6              | 71.4 | 1            | 1               | 92                 | 4.5                | 68C          |
| SMAP4SMA75CASC | 64.1                      | 71.3              | 78.8 | 1            | 1               | 103                | 4                  | 75C          |
| SMAP4SMA82CASC | 70.1                      | 77.9              | 86.1 | 1            | 1               | 113                | 3.6                | 82C          |
| SMAP4SMA91CASC | 77.8                      | 86.5              | 95.5 | 1            | 1               | 125                | 3.3                | 91C          |
| SMAP4SMA100CAC | 85.5                      | 95                | 105  | 1            | 1               | 137                | 3                  | 100C         |
| SMAP4SMA110CAC | 94                        | 105               | 116  | 1            | 1               | 152                | 2.7                | 110C         |
| SMAP4SMA120CAC | 102                       | 114               | 126  | 1            | 1               | 165                | 2.5                | 120C         |
| SMAP4SMA130CAC | 111                       | 124               | 137  | 1            | 1               | 179                | 2.3                | 130C         |
| SMAP4SMA150CAC | 128                       | 143               | 158  | 1            | 1               | 207                | 2                  | 150C         |
| SMAP4SMA160CAC | 136                       | 152               | 168  | 1            | 1               | 219                | 1.9                | 160C         |
| SMAP4SMA170CAC | 145                       | 162               | 179  | 1            | 1               | 234                | 1.8                | 170C         |
| SMAP4SMA180CAC | 154                       | 171               | 189  | 1            | 1               | 246                | 1.7                | 180C         |
| SMAP4SMA200CAC | 171                       | 190               | 210  | 1            | 1               | 274                | 1.5                | 200C         |
| SMAP4SMA220CAC | 185                       | 209               | 231  | 1            | 1               | 328                | 1.3                | 220C         |

**SMD TRANSIENT VOLTAGE SUPPRESSORS DIODES SMA SERIES**

**BIDIRECTIONAL TYPE- ELECTRICAL CHARACTERISTICS - Ta = 25°C**

Table 6

| Part Code      | Reverse Stand-off Voltage | Breakdown Voltage |       | Test Current | Reverse Leakage | Max. Clamp Voltage | Peak Pulse Current | Marking Code |
|----------------|---------------------------|-------------------|-------|--------------|-----------------|--------------------|--------------------|--------------|
|                |                           | V BR @ I T        |       |              |                 |                    |                    |              |
|                | V RMV                     | Min               | Max   | I T          | I R @ V RWM     | V C @ I PPM        | I PPM              |              |
|                | V                         | V                 | V     | mA           | µA              | V                  | A                  |              |
| SMAP4SMA250CAC | 214                       | 237               | 263   | 1            | 1               | 344                | 1.2                | 250C         |
| SMAP4SMA300CAC | 256                       | 285               | 315   | 1            | 1               | 414                | 1                  | 300C         |
| SMAP4SMA350CAC | 300                       | 332               | 368   | 1            | 1               | 482                | 0.9                | 350C         |
| SMAP4SMA400CAC | 342                       | 380               | 420   | 1            | 1               | 548                | 0.8                | 400C         |
| SMAP4SMA440CAC | 376                       | 418               | 462   | 1            | 1               | 602                | 0.7                | 440C         |
| SMAP4SMA480CAC | 408                       | 456               | 504   | 1            | 1               | 658                | 0.6                | 480C         |
| SMAP4SMA510CAC | 434                       | 485               | 535   | 1            | 1               | 698                | 0.6                | 510C         |
| SMAP4SMA530CAC | 451                       | 503.5             | 556.5 | 1            | 1               | 725                | 0.6                | 530C         |
| SMAP4SMA540CAC | 460                       | 513               | 567   | 1            | 1               | 740                | 0.5                | 540C         |
| SMAP4SMA550CAC | 468                       | 522.5             | 577.5 | 1            | 1               | 760                | 0.5                | 550C         |

**SMD TRANSIENT VOLTAGE SUPPRESSORS DIODES SMA SERIES**
**RELIABILITY**

| Number | Experiment Items                   | Experiment Method And Conditions                                                                               | Reference Documents             |
|--------|------------------------------------|----------------------------------------------------------------------------------------------------------------|---------------------------------|
| 1      | Solder Resistance Test             | Test 260°C± 5°C for 10 ± 2 sec.<br>Immerse body into solder 1/16" ± 1/32"                                      | MIL-STD-750D<br>METHOD-2031.2   |
| 2      | Solderability Test                 | 230°C ±5°C for 5 sec.                                                                                          | MIL-STD-750D<br>METHOD-2026.1 0 |
| 3      | Pull Test                          | 1 kg in axial lead direction for 10 sec.                                                                       | MIL-STD-750D<br>METHOD-2036.4   |
| 4      | Bend Test                          | 0.5Kg Weight Applied To Each Lead,<br>Bending Arcs 90 °C ± 5 °C For 3 Times                                    | MIL-STD-750D<br>METHOD-2036.4   |
| 5      | High Temperature Reverse Bias Test | TA=100°C for 1000 Hours at VR=80%<br>Rated VR                                                                  | MIL-STD-750D<br>METHOD-1038.4   |
| 6      | Forward Operation Life Test        | TA=25°C Rated Average Rectified<br>Current                                                                     | MIL-STD-750D<br>METHOD-1027.3   |
| 7      | Intermittent Operation Life Test   | On state: 5 min with rated IRMS Power<br>Off state: 5 min with Cool Forced Air.<br>On and off for 1000 cycles. | MIL-STD-750D<br>METHOD-1036.3   |
| 8      | Pressure Cooker Test               | 15 PSIG, TA=121°C, 4 hours                                                                                     | MIL-S-19500<br>APPENOIXC        |
| 9      | Temperature Cycling Test           | -55°C~+125°C; 30 Minutes For Dwelled<br>Time 5 minutes for transferred time.<br>Total: 10 cycles.              | MIL-STD-750D<br>METHOD-1051.7   |
| 10     | Thermal Shock Test                 | 0°C for 5 minutes., 100°C for 5minutes,<br>Total: 10 cycles                                                    | MIL-STD-750D<br>METHOD-1056.7   |
| 11     | Forward Surge Test                 | 8.3ms Single Sale Sine-wave One Surge.                                                                         | MIL-STD-750D<br>METHOD-4066.4   |
| 12     | Humidity Test                      | TA=65°C, RH=98% for 1000 hours.                                                                                | MIL-STD-750D<br>METHOD-1021.3   |
| 13     | High Temperature Storage life Test | 150°C for 1000 Hours                                                                                           | MIL-STD-750D<br>METHOD-1031.5   |

**SMD TRANSIENT VOLTAGE SUPPRESSORS DIODES SMA SERIES**

**SUGGESTED REFLOW PROFILE (For Reference Only)**



|                                                        |                                  |                   |
|--------------------------------------------------------|----------------------------------|-------------------|
| <b>Profile Feature</b>                                 |                                  | Pb-Free Assembly  |
| <b>Average Ramp-up Rate (Ts Max to Tp)</b>             |                                  | 3°C/second Max    |
| <b>Preheat</b>                                         | <b>Temperature Min (Ts Min.)</b> | 150°C             |
|                                                        | <b>Temperature Max (Ts Max.)</b> | 200°C             |
|                                                        | <b>Time (ts Min. to ts Max.)</b> | 60 ~ 180 seconds  |
| <b>Time maintained above</b>                           | <b>Temperature (Tl)</b>          | 217°C             |
|                                                        | <b>Time (tL)</b>                 | 60 ~ 150 seconds  |
| <b>Peak/Classification Temperature (Tp)</b>            |                                  | 260 °C            |
| <b>Time within 5°C of actual Peak Temperature (tp)</b> |                                  | 20 ~ 40 seconds   |
| <b>Ramp-down rate</b>                                  |                                  | 6 °C /Second Max. |
| <b>Time 25 °C to Peak Temperature</b>                  |                                  | 8 minutes Max.    |
| <b>Suggest reflow times</b>                            |                                  | 3 Times Max.      |

**SMD TRANSIENT VOLTAGE SUPPRESSORS DIODES SMA SERIES**

**RATINGS AND CHARACTERISTIC CURVES (For Reference Only) - Ta= 25°C Unless Otherwise Specified**

Figure 1. Peak Pulse Power Rating Curve

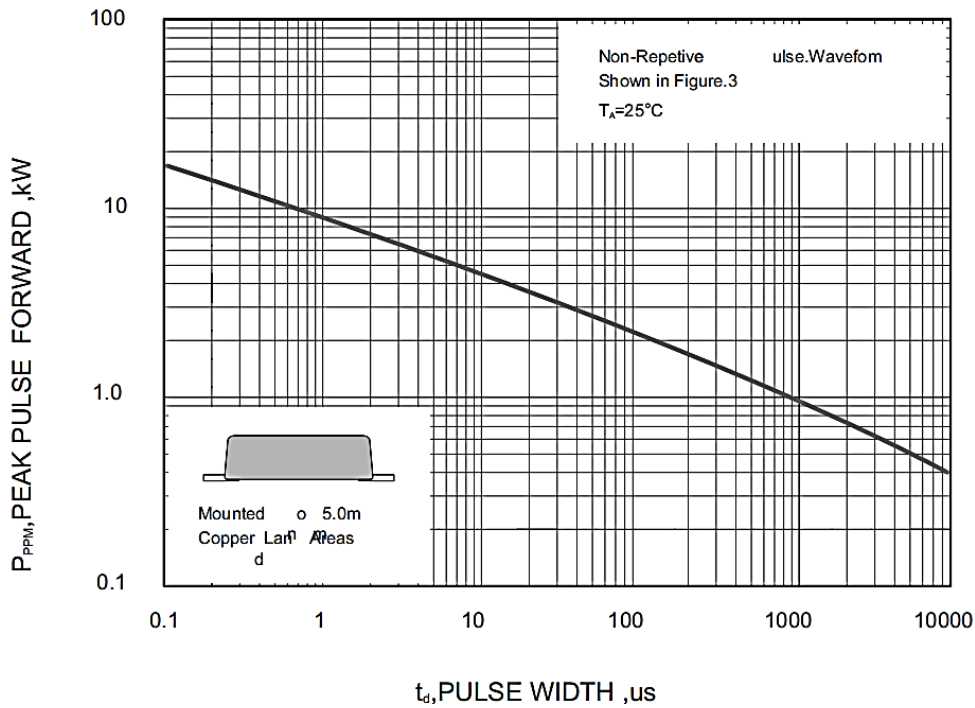
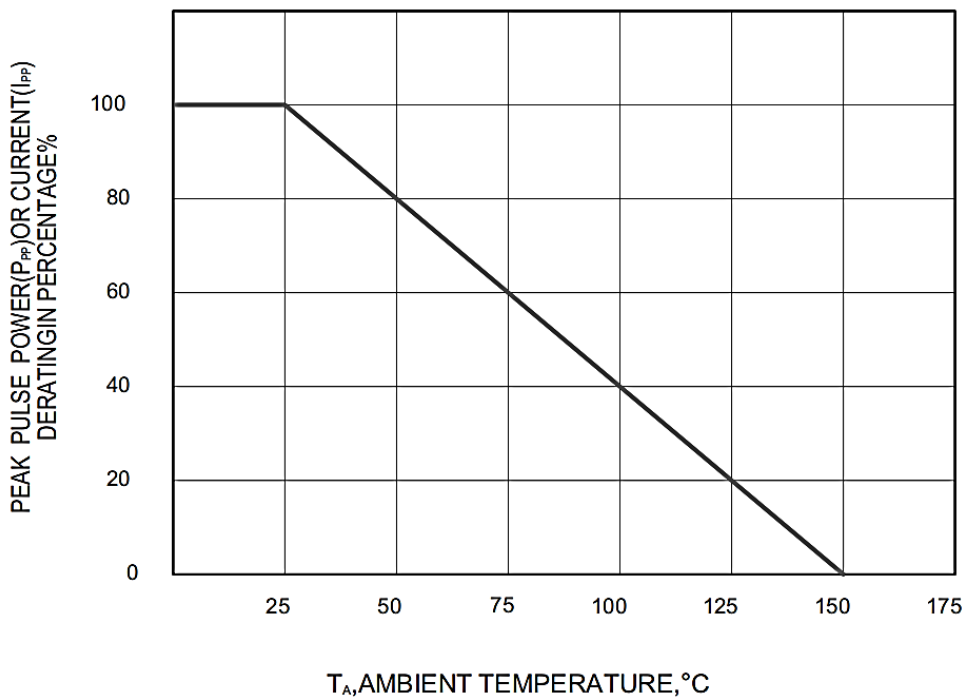


Figure 2. Pulse Derating Curve



**SMD TRANSIENT VOLTAGE SUPPRESSORS DIODES SMA SERIES**

**RATINGS AND CHARACTERISTIC CURVES (For Reference Only) - Ta= 25°C Unless Otherwise Specified**

Figure 3. Pulse Waveform

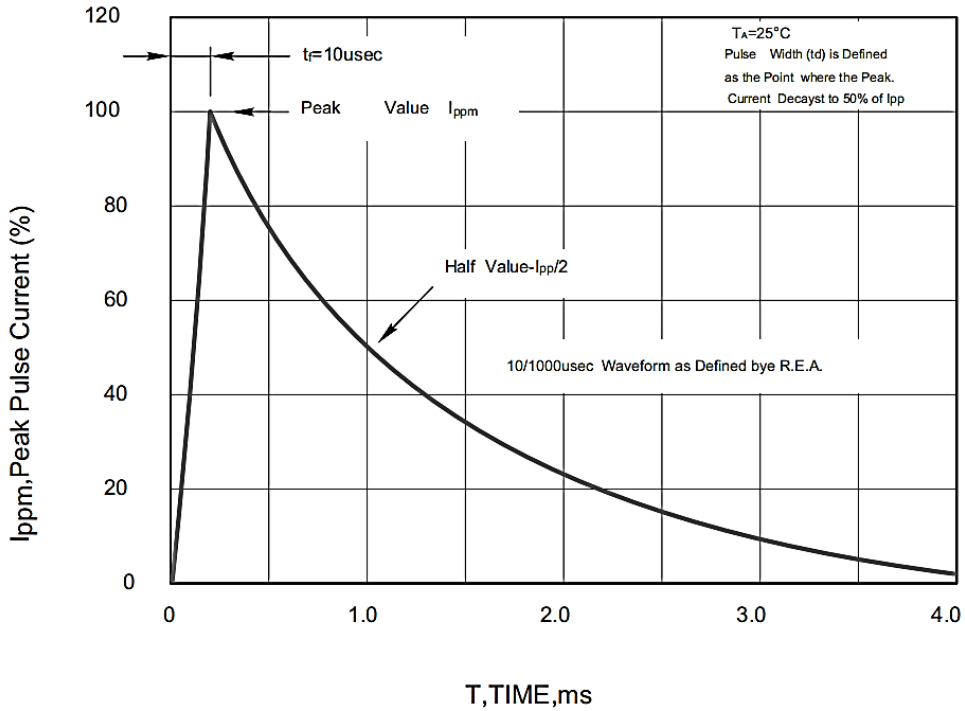
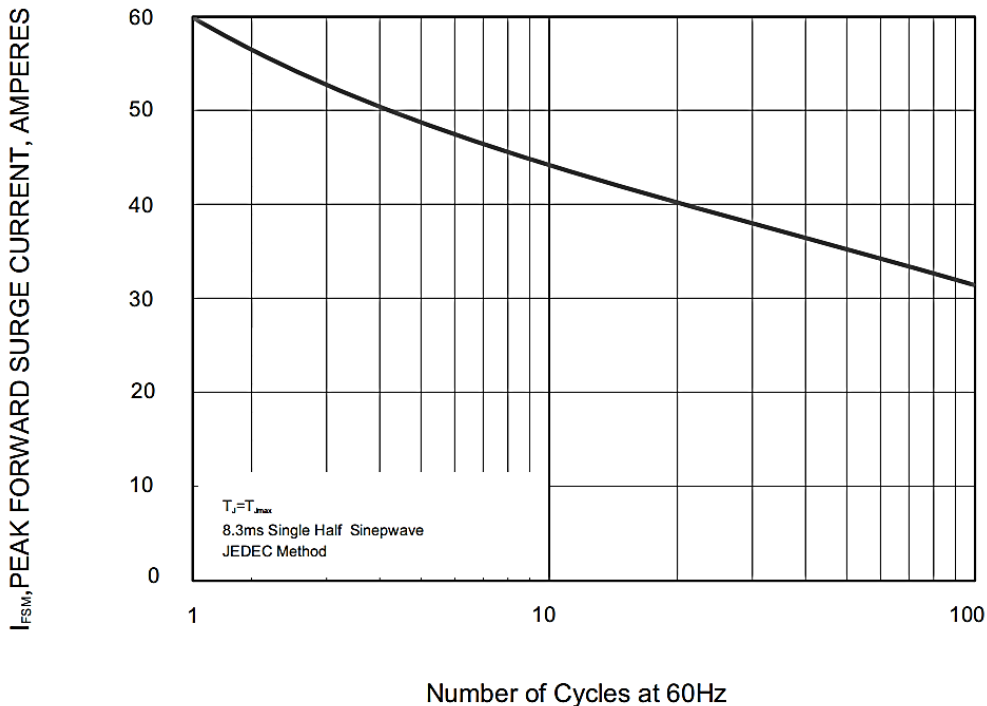


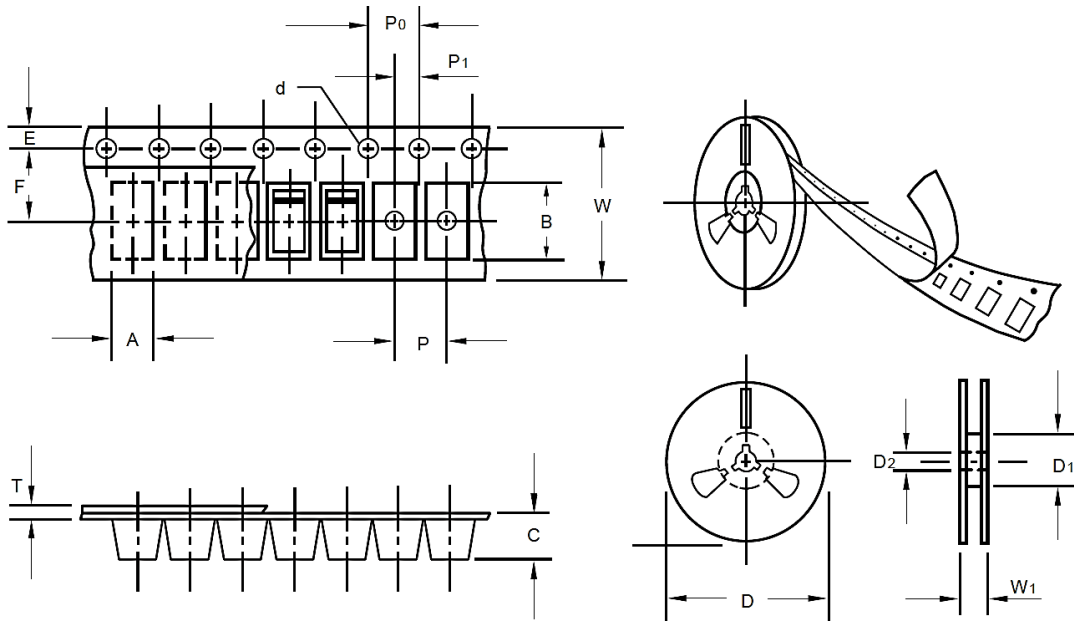
Figure 4. Maximum Non-Repetitive Forward Surge Current



**SMD TRANSIENT VOLTAGE SUPPRESSORS DIODES SMA SERIES**

**TAPE/REEL (Unit: mm)**

All Devices are packed in accordance with EIA standard RS-481-A and specifications.



| Item                     | Symbol | Tolerance | SMA/DO-214AC |
|--------------------------|--------|-----------|--------------|
| Carrier width            | A      | 0.1       | 2.8          |
| Carrier Length           | B      | 0.1       | 5.33         |
| Carrier Depth            | C      | 0.1       | 2.36         |
| Sprocket hole            | d      | 0.05      | 1.50         |
| 13"Reel outside diameter | D      | 2.0       | 330.0        |
| 13"Reel inner diameter   | D1     | -         | 50.0Min.     |
| 7"Reel outside diameter  | D      | 2.0       | 178.0        |
| 7"Reel inner diameter    | D1     | -         | 62.0         |
| Feed hole diameter       | D2     | 0.5       | 13.00        |
| Sprocket hole position   | E      | 0.1       | 1.75         |
| Punch hole position      | F      | 0.1       | 5.50         |
| Punch hole pitch         | P      | 0.1       | 4.00         |
| Sprocket hole pitch      | P0     | 0.1       | 4.00         |
| Embossment center        | P1     | 0.1       | 2.0          |
| Overall tape thickness   | T      | 0.1       | 0.28         |
| Tape width               | W      | 0.3       | 12.00        |
| Reel width               | W1     | 1.0       | 18.0         |

**SMD TRANSIENT VOLTAGE SUPPRESSORS DIODES SMA SERIES**

**PACKAGE For Reference Only**

| Case Code | SMA       |
|-----------|-----------|
| Reel Size | 13"       |
| Reel Size | 330 mm    |
| SPQ/Reel  | 5000 pcs  |
| Qty. /Box | 10000 pcs |
| G.W/Box   | /         |

**GENERAL RETURN/REFUND POLICY**

NextGen requires that customers first obtain an RMA (Returned Merchandise Authorization) number prior to returning any products. Returns must be made within 30 days of the date of invoice, be in the original packaging, unused and like-new condition. At the time of quoting or purchasing, a product may say that it is Non-Cancelable/Non-Returnable (NCNR). These products are not returnable and not refundable.

**IMPORTANT NOTICE AND DISCLAIMER**

- 1) NextGen Component, Inc. reserves the right to make changes to this document and its products and specifications at any time without notice. Customers should obtain and confirm the latest product information and specifications before final design, purchase or use.
- 2) NextGen Component, Inc makes no warranty, representation or guarantee regarding the suitability of its products for any particular purpose, not does NextGen Component, Inc assume any liability for application assistance or customer product design.
- 3) NextGen Component, Inc does not warrant or accept any liability with products which are purchased or used for any unintended or unauthorized application. No license is granted by implication or otherwise under any intellectual property rights of NextGen Component, Inc
- 4) NextGen Component, Inc. products are not authorized for use as critical components in life support devices or systems without express written approval of NextGen Component, Inc.