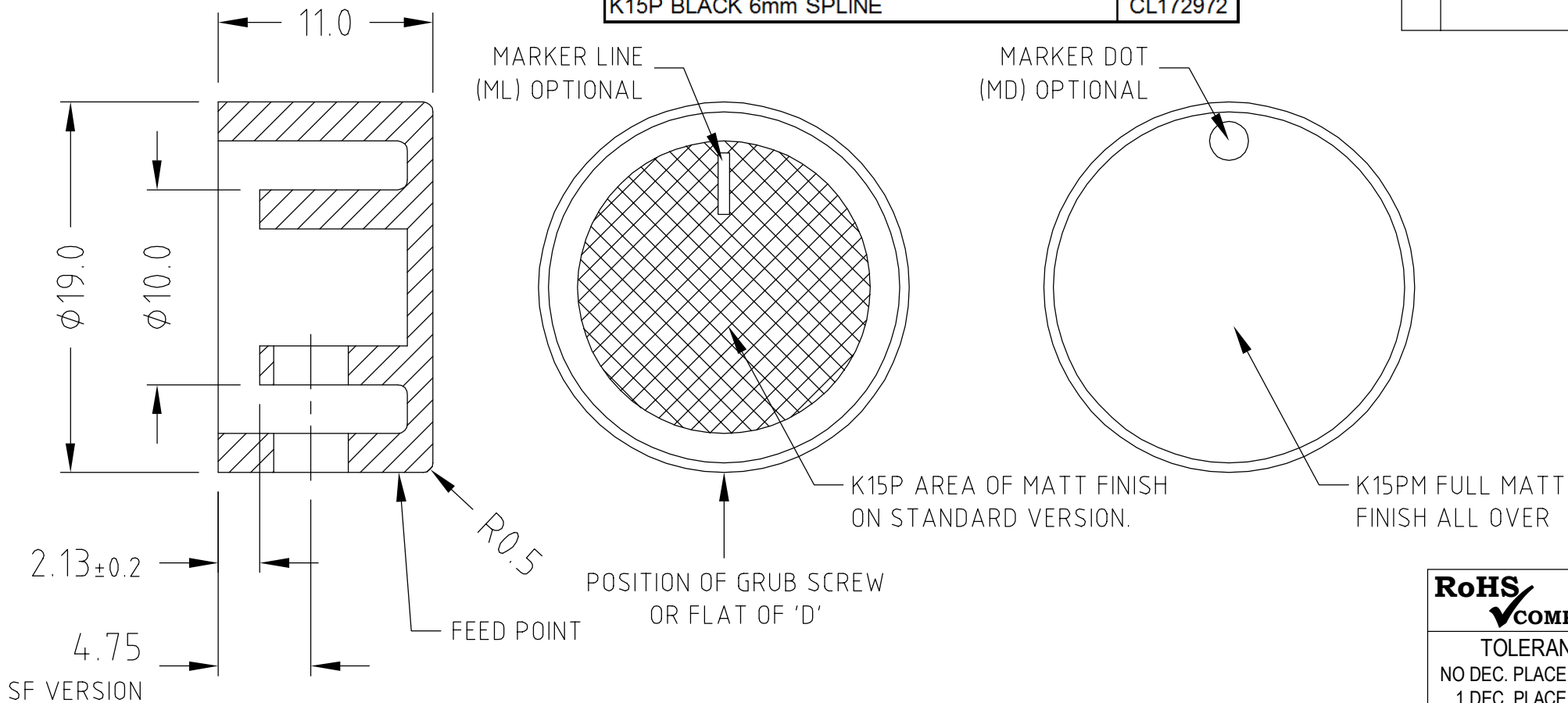


DESCRIPTION	PART No.
K15P BLACK 1/4" D	CL172951
K15PM BLACK 6mm SCREW FIX *DATATECH* THIS VERSION IS MATT FINISH ALL OVER	CL172968
K15P WHITE 1/4" D ML	CL172969
K15P BLACK 6mm SPLINE ML	CL172970
K15PM BLACK 6mm SCREW FIX MARKER DOT THIS VERSION IS MATT FINISH ALL OVER	CL172971
K15P BLACK 6mm SPLINE	CL172972

ISS.	AMEND	DATE
1	1st DRAWN	12/08/91
2	REDRAWN	18/11/91
3	UPDATED + CL172970	23/11/12
4	ADD K15PM MATT MD	10/12/14
5	CL172972 ADDED	11/01/16



RoHS
COMPLIANT

TOLERANCE
 NO DEC. PLACE ± 0.25
 1 DEC. PLACE ±
 2 DEC. PLACE ±
 HOLE Ø ±
 ANGLES ±
 UNLESS OTHERWISE STATED

Cliff Electronic Components Ltd.

76 Holmethorpe Avenue, Holmethorpe Industrial Estate,
 Redhill, Surrey, RH1 2PF, England, UK
 Tel: 01737-771375 Fax: 01737-766012 Website: www.cliffuk.co.uk

DIMENSIONS IN MILLIMETERS UNLESS OTHERWISE STATED. WORK TO DIMENSIONS. REMOVE ALL BURRS. IF IN DOUBT ASK.

3rd ANGLE PROJECTION:

DO NOT SCALE

MATERIAL: NYLON 6
 FINISH: MATT TOP SHINY BOTTOM

TITLE: KNOB K15P

THE CONTENTS OF THIS DOCUMENT MUST NOT BE COPIED OR DISCLOSED TO A 3rd PARTY WITHOUT WRITTEN PERMISSION OF CLIFF UK. © 1991

DRAWN: C.A.M.J. APPROVED: R.W.T.

DRWG. No. **CL172951**

FORM: A4DRWGH