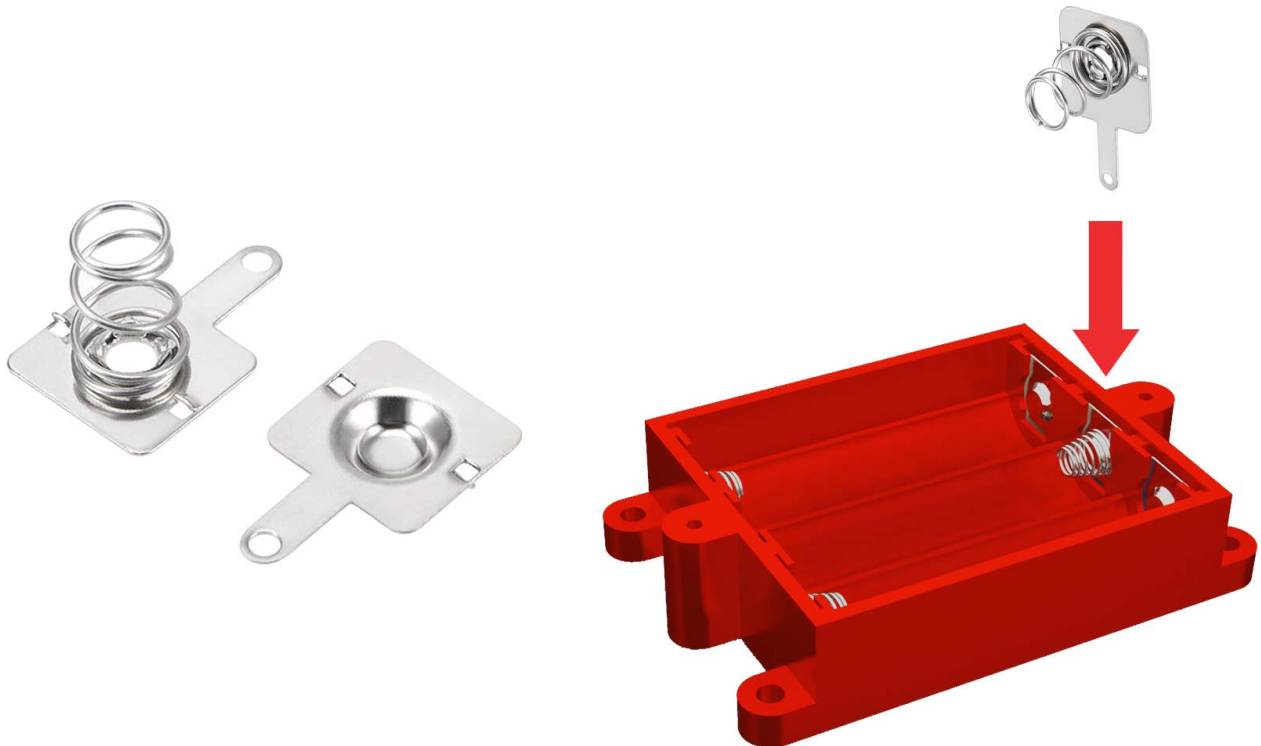




CONTACT-AAA

AAA BATTERY CONTACTS



These battery contacts will fit all XYMTEC 3D printable AAA battery compartments. Press the contacts fully into the available slots in the printed part. The solder tabs will extend out the bottom of the part.

Size / Dimension: 0.394" L x 0.354" W (10 mm x 9 mm)

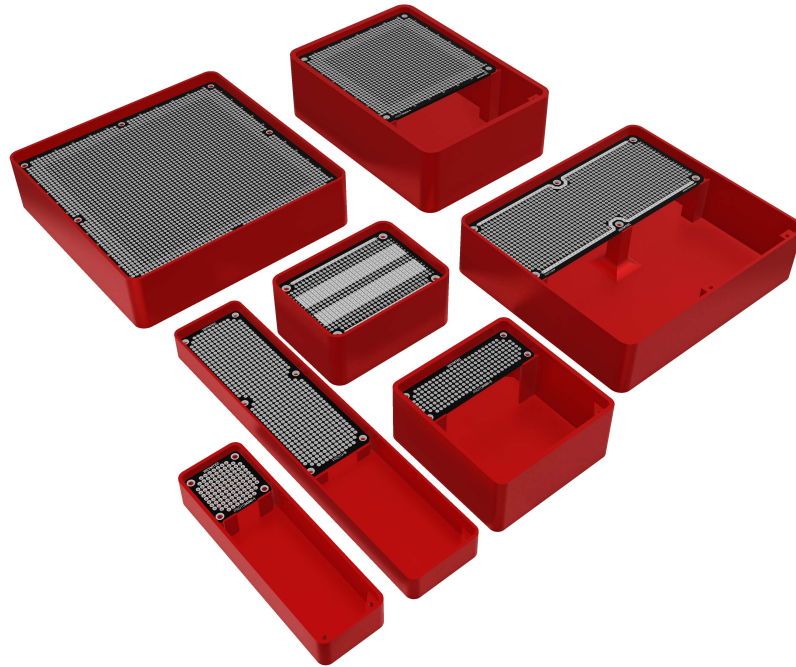
Battery Type: AAA

Plating: Nickel Plated

<https://www.xymtec.com>

FREE 3D PRINTABLE ENCLOSURE FILES

AVAILABLE TO DOWNLOAD ON OUR WEBSITE



- **STANDARD ENCLOSURES**
- **ENCLOSURES WITH MOUNTING EARS**
- **ENCLOSURES WITH BATTERY COMPARTMENTS**
- **MINI ENCLOSURES**
- **REMOTE CONTROL ENCLOSURES**



<https://www.xymtec.com>