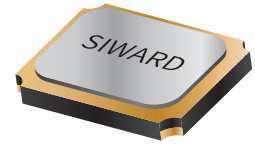


# CRYSTAL UNIT

## XTL58



### Applications

- Bluetooth / Wireless LAN
- Wearable Devices
- LTE / SAS

### Features

- Ultra thin / Dimensions (2.5×2.0×0.55)
- Ceramic Package
- High Reliability and High Stability
- Tight Tolerance and Stability
- Reflow Soldering / Emboss Taping

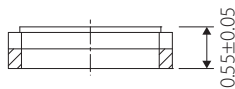
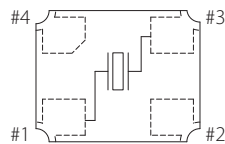
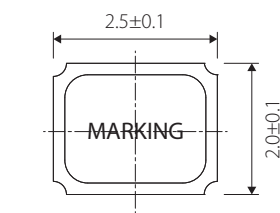
### Specifications



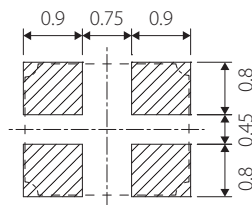
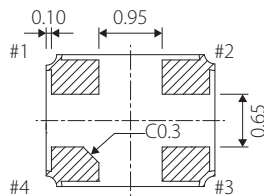
Model	XTL58	
Nominal frequency range	12.000~66.000 MHz	
Crystal cut	Fundamental [AT-cut]	
Storage temperature range	-40~+90°C	
Operating temperature range	-30~+85°C	-40~+105°C
Frequency temperature characteristics(Ref. to +25°C)	$\pm 15 \times 10^{-6}$	$\pm 30 \times 10^{-6}$
Frequency tolerance (at +25°C)	$\pm 15 \times 10^{-6}$	
Equivalent series resistance	150Ω: 12.000~15.999 MHz 80Ω: 16.000~19.999 MHz 60Ω: 20.000~29.999 MHz 50Ω: 30.000~34.999 MHz 40Ω: 35.000~66.000 MHz	
Load capacitance	8,10,12 pF or specify	
Shunt capacitance	3pF max.	
Level of drive	10 μW (100 μW max.)	

Package quantity: 3,000pcs max./Reel.

### Outline and Dimensions [unit:mm]



Land Pattern(REFERENCE)



Pin Connection	
#1,#3	Crystal
#2,#4	GND