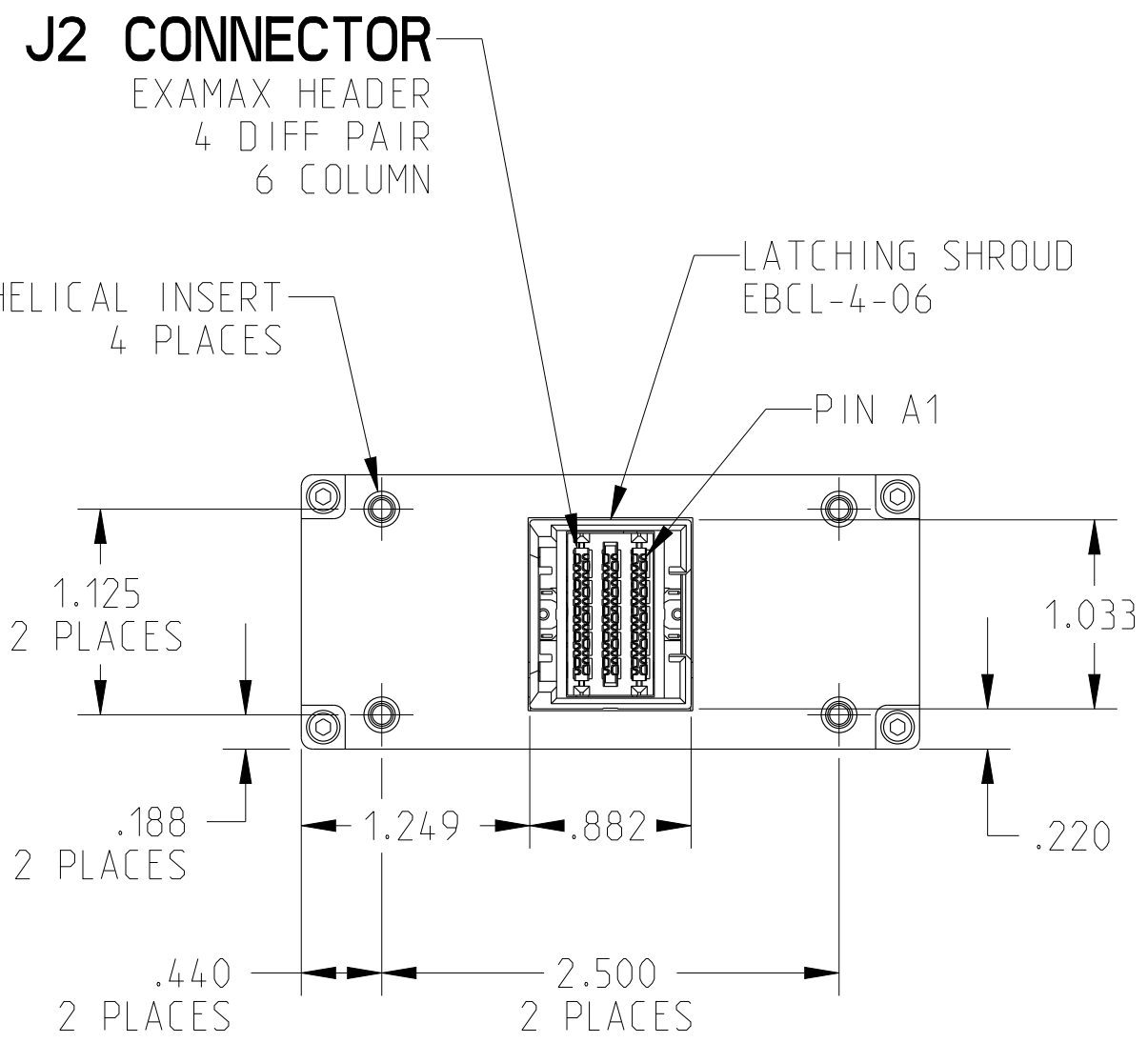
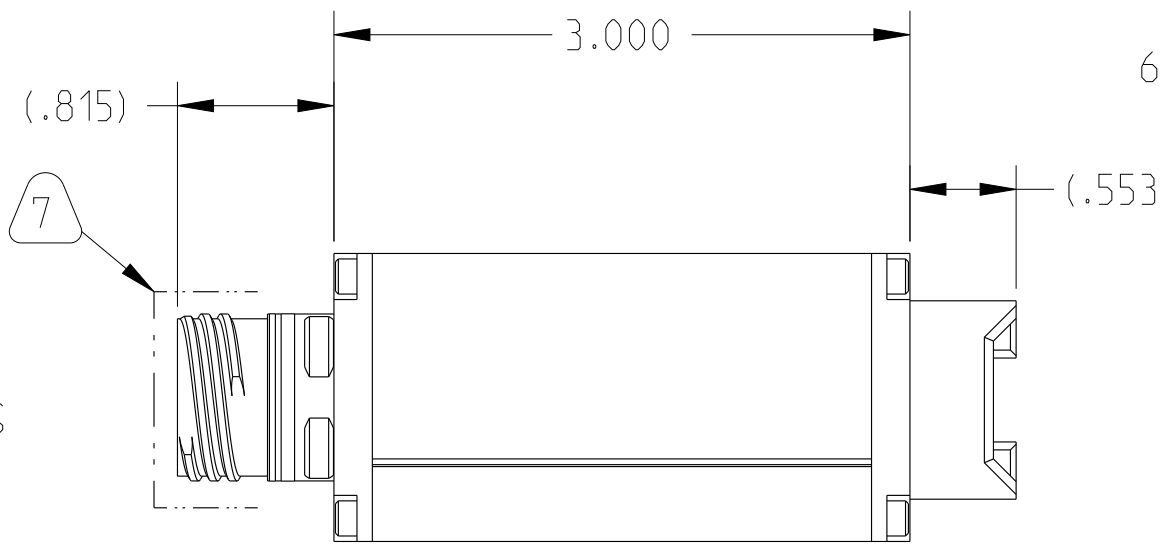
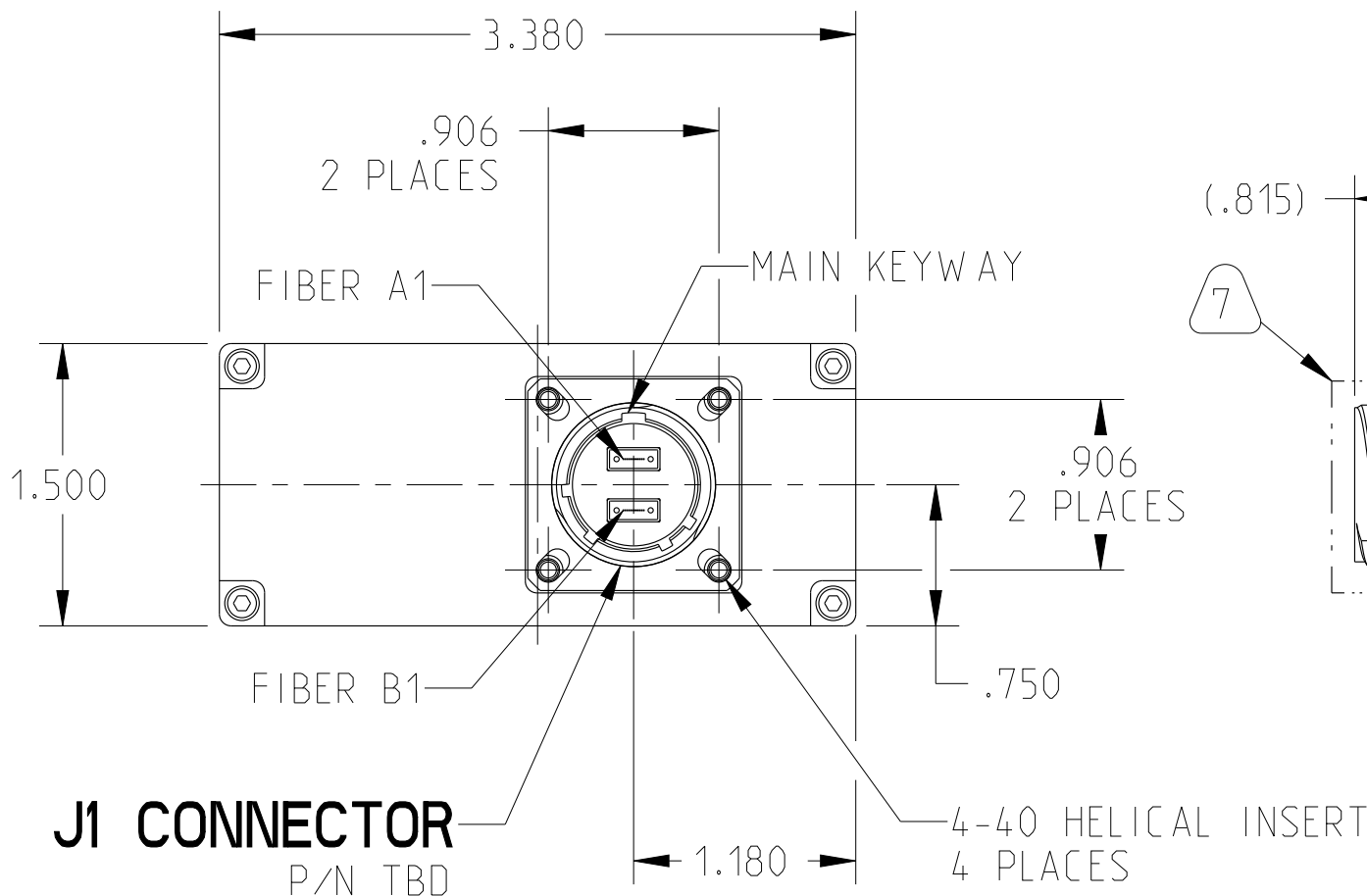
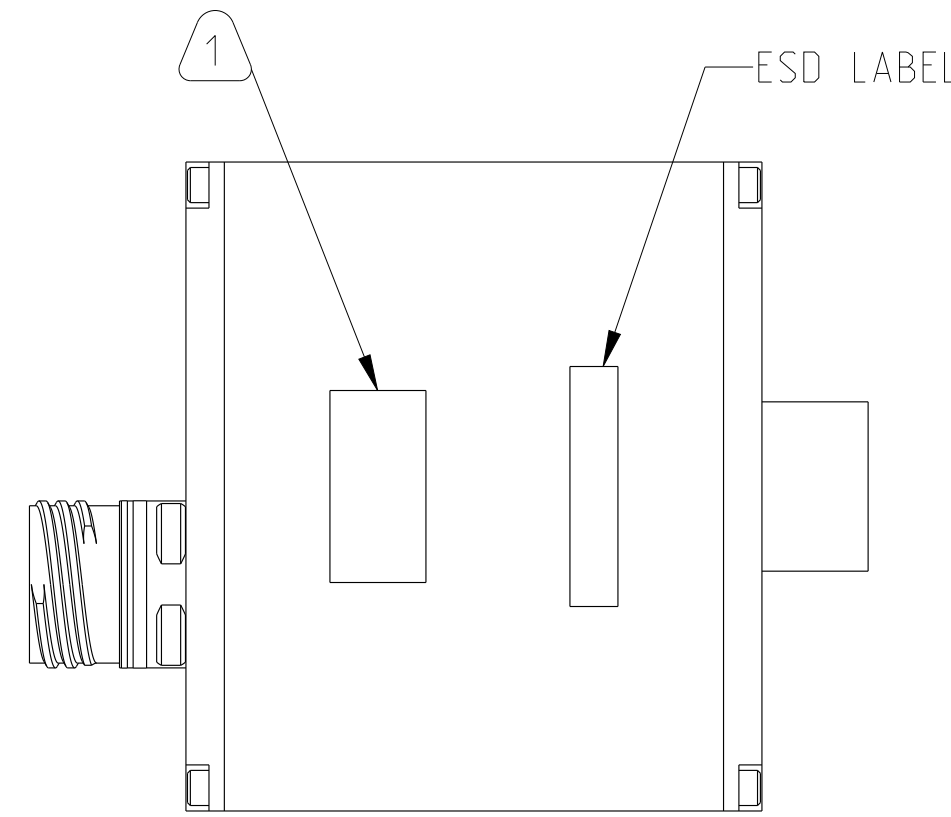


REV. X-3	SHEET 1 OF 2	DOCUMENT NO. CF-020400-62X
REVISIONS M		
LTR	DESCRIPTION	DATE
X-0	PRELIMINARY DESIGN	04/04/2023
X-1	ADDED EXAMAX RCPT UPDATED I/O CHART	05/03/2023
X-2	UPDATED I/O CHART, CHANGED PHY1 AND PHY2 TO DEBUG	05/10/2023
X-3	UPDATED I/O CHART	06/06/2023

**PRELIMINARY
DRAWING
REVISION: X-3**



**PRELIMINARY
DRAWING
REVISION: X-3**



ATTENTION
OBSERVE PRECAUTIONS
FOR HANDLING
ELECTROSTATIC
SENSITIVE
DEVICES

SEE SHEET 2

NOTES:

THE USE OF THIS DOCUMENT IS UNLIMITED.
HOWEVER, DOCUMENTS REFERENCED HEREON
MAY CONTAIN LIMITED RIGHTS DATA.

NONE
NEXT ASSEMBLY

CREO INFORMATION
CREO Model Used:
CF-020400-62X.ASSEM
Drawing Name:
CF-020400-62X

UNLESS OTHERWISE SPECIFIED	SPECIFICATIONS	POS	QTY	PART NUMBER	DESCRIPTION	NOTE
LINEAR DIMENSIONS ARE IN INCHES TOLERANCES: .XXXX = ±.0005 ANGLES= ±2° .XXX = ±.010 .XX = ±.03 .X = ±.1 DIM. & TOL. PER ASME Y14.5M; DRM PER MIL-STD-31000; OTHER Amphenol Stds. PER 9-3800 LEGENDS: =FLAG NOTE CALL OUT REFERENCE ONLY	MATERIAL SPEC.	PARTS LIST				
	NONE	AMPHENOL CORPORATION 40-60 DELAWARE AVENUE SIDNEY, N.Y. 13858 MEDIA CONVERTER 100GBase-SR4 FIBER / 100GBase-KR4 COPPER 2 CHANNEL				
PROCESS SPEC.	9-9172-3	THIRD ANGLE PROJECTION		APPROVALS PREPARED BY W. LEE ENGINEER IN CHARGE W. LEE DESIGN MANAGER J. ROTHROCK DESIGN ACTIVITY GROUP CI DATE 01-May-23	SIZE C CAGE CODE 77820 SCALE: 1.0	DOCUMENT NO. CF-020400-62X REV. X-3 SHEET 1 OF 2

DOCUMENT NO. CF-020400-62X
SHEET 1 OF 2
REV. X-3

DOCUMENT NO. CF-020400-62X
SHEET 1 OF 2
REV. X-3

J1 I/O CHART 9

ID	SIGNAL	ID	SIGNAL
A1	100G-SR4_CH1_TX1	B1	100G-SR4_CH2_TX1
A2	100G-SR4_CH1_TX2	B2	100G-SR4_CH2_TX2
A3	100G-SR4_CH1_TX3	B3	100G-SR4_CH2_TX3
A4	100G-SR4_CH1_TX4	B4	100G-SR4_CH2_TX4
A5	N/C	B5	N/C
A6	N/C	B6	N/C
A7	N/C	B7	N/C
A8	N/C	B8	N/C
A9	100G-SR4_CH1_RX4	B9	100G-SR4_CH2_RX4
A10	100G-SR4_CH1_RX3	B10	100G-SR4_CH2_RX3
A11	100G-SR4_CH1_RX2	B11	100G-SR4_CH2_RX2
A12	100G-SR4_CH1_RX1	B12	100G-SR4_CH2_RX1

J2 I/O CHART 9

	1	2	3	4	5	6
A	GND	GND	GND	GND	GND	GND
B	GND	100G-KR4_CH1_TX3+	GND	100G-KR4_CH2_TX3+	GND	RESET
C	100G-KR4_CH1_TX1+	100G-KR4_CH1_TX3-	100G-KR4_CH2_TX1+	100G-KR4_CH2_TX3-	POWER 12V	RESET_RTN
D	100G-KR4_CH1_TX1-	GND	100G-KR4_CH2_TX1-	GND	POWER 12V	GND
E	GND	100G-KR4_CH1_TX4+	GND	100G-KR4_CH2_TX4+	GND	SDA
F	100G-KR4_CH1_TX2+	100G-KR4_CH1_TX4-	100G-KR4_CH2_TX2+	100G-KR4_CH2_TX4-	POWER 12V	SCL
G	100G-KR4_CH1_TX2-	GND	100G-KR4_CH2_TX2-	GND	POWER 12V	GND
H	GND	100G-KR4_CH1_RX4-	GND	100G-KR4_CH2_RX4-	GND	MDIO
I	100G-KR4_CH1_RX2-	100G-KR4_CH1_RX4+	100G-KR4_CH2_RX2-	100G-KR4_CH2_RX4+	POWER 12V	MDC
J	100G-KR4_CH1_RX2+	GND	100G-KR4_CH2_RX2+	GND	POWER 12V	GND
K	GND	100G-KR4_CH1_RX3-	GND	100G-KR4_CH2_RX3-	GND	N/C
L	100G-KR4_CH1_RX1-	100G-KR4_CH1_RX3+	100G-KR4_CH2_RX1-	100G-KR4_CH2_RX3+	POWER 12V	N/C
M	100G-KR4_CH1_RX1+	GND	100G-KR4_CH2_RX1+	GND	POWER 12V	GND
N	GND	GND	GND	GND	GND	GND

11. J1 CONNECTOR AND HOUSINGS ARE BLACK ZINC NICKEL PLATED ALUMINUM ALLOY.

10. FIBER LINES SHALL BE 850nm SIGNAL COMPATIBLE 50/125 MULTI MODE FIBER.

9 ALL TX AND RX SPECIFIED ON I/O CHART ARE FROM THE PERSPECTIVE OF CF-020400-62X ASSEMBLY.

8. MARKING ON LABEL MAY DIFFER FROM DRAWING BASED ON CUSTOMER SPECIFIC ORDER REQUIREMENTS.

7 PROTECTIVE CAP SHALL BE INSTALLED PRIOR TO SHIPPING.

6. ASSEMBLY CONTAINS ELECTROSTATIC DISCHARGE (ESD) SENSITIVE COMPONENTS. ASSEMBLY SHALL BE HANDLED, PACKAGED, AND SHIPPED TO MEET REQUIREMENTS OF ANSI/ESD-S-20.20 AND IPC-A-610.

5. J2 MATES WITH SAMTEC ECBF CABLE ASSEMBLY (SIZE: 4 DIFF X 6 COLUMN).

4. J1 MATES WITH TBD CONNECTOR P/N.

3. OPERATING TEMPERATURE: -40°C TO +85°C
STORAGE TEMPERATURE: -40°C TO +85°C

2. PACKAGE PER PRODUCTION PROCESS SHEET.

1 MARK LABEL WITH "AMPHENOL", PART NUMBER, AND SEVEN DIGIT SERIAL NUMBER AND ATTACH ON INDICATED SURFACE. SERIAL NUMBER PER 9-9172-3.

EXAMPLE: FOR ASSEMBLY NUMBER 3 BUILT ON MAY 5 (WEEK 18), 2023.

AMPHENOL
CF-020400-62N
2318003

NOTES:

THE USE OF THIS DOCUMENT IS UNLIMITED. HOWEVER, DOCUMENTS REFERENCED HEREON MAY CONTAIN LIMITED RIGHTS DATA.

**PRELIMINARY
DRAWING
REVISION: X-3**

**PRELIMINARY
DRAWING
REVISION: X-3**

CF-020400-62X

SHEET 2 OF 2

REV. X-3

D

C

3

REVISION

Eng. PDM Information For Reference Only

REV. X-3

SHEET 2 OF 2

CF-020400-62X

A

FORMAT: C-0-E-1-PRELIMINARY

SIZE C	CAGE CODE 77820	DOCUMENT NO. CF-020400-62X	REV. X-3
SCALE: 1.5		REF: CF-020401-6XX	SHEET 2 OF 2