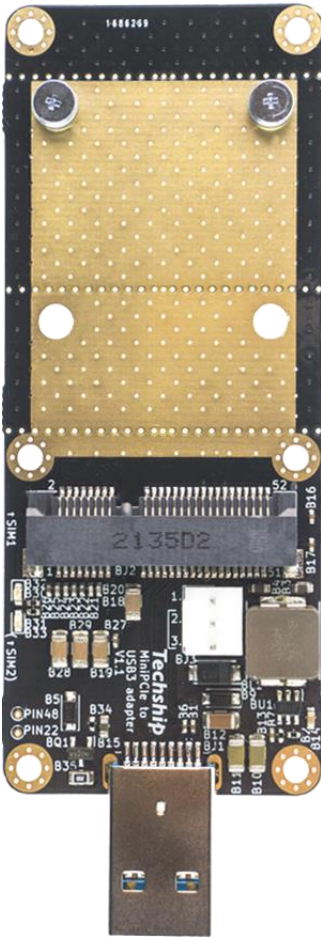


## TECHSHIP MINI PCIe TO USB3 ADAPTER SERIES PU201 / PU202

### DESCRIPTION



Jumpstart your cellular IoT development with Techship miniPCIe adapter series designed for mobile broadband cellular data cards.

In-house designed by Techship engineering team for optimal hardware compatibility with miniPCIe cellular data cards and locally manufactured in Sweden for high-quality and flexible production.

Test and evaluate cellular data cards in miniPCIe form factor in your current system through a standard USB3 type A port or integrate the data card and adapter in your application for added cellular data connectivity.

#### Generic functionality tested on data card from series:

Telit	LE910Cx, LM940A11, LM960A18
Sierra Wireless	MC74x1, MC74x0
Simcom	SIM79xx, SIM7600
Fibocom	NL668, NL678
Quectel	EC2x, EG2x, EPxx

The Techship adapter is useful as a flexible and cost-effective development kit and a handy alternative to your own hardware platform and software environment during the cellular data card integration phase and for your products life cycle maintenance.

### USECASE AND FEATURES

#### Typical use cases

- Testing and evaluation
- Software integration
- Troubleshooting
- Diagnostics
- Log capturing
- Firmware upgrades

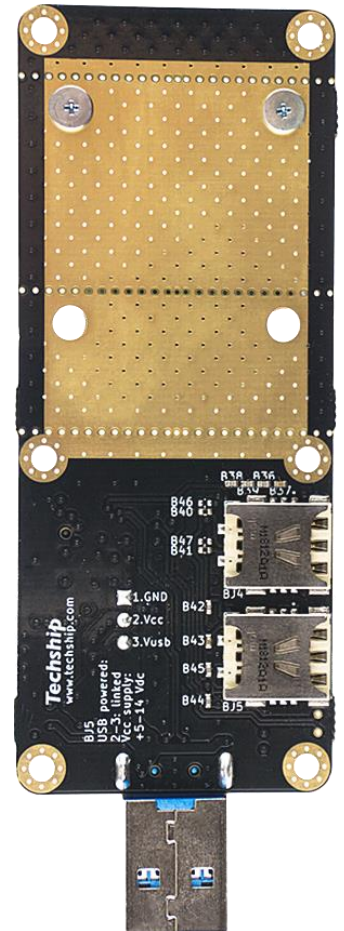
#### Key features

- Sturdy DC-DC step-down power supply circuitry
- Extra ceramic capacitors for improved voltage stability
- 5 to 14V DC external power supply input possible
- Thermal planes for heat dissipation with thermal pads
- Discharge circuitry when USB plug power supply is turned off

## TECHSHIP MINI PCIe TO USB3 ADAPTER SERIES PU201 / PU202

### SPECIFICATIONS

Adapter Model	PU201	PU202
Article No	11319	11449
<b>Dimensions</b>		
Width	36mm	
Length	105mm (PCB: 89mm)	
<b>Temperature range</b>		
Operational	-20°C to +75°C	
<b>Slot-in card</b>		
Form factor	MiniPCIe data card (52-pin)	
Supported card sizes	Full size, half size	
Output voltage	+3.4V DC	
Maximum output current	4000mA (with external power supply) ~2300mA (by USB3 type A plug supply) ~1200mA (by USB3 specification) ~650mA (by USB2 specification)	
<b>SIM card interfaces</b>		
Type	4FF nano SIM card holder	
Quantity	2x (Primary + Secondary)	
2nd SIM interface signals	Generic design	Telit HW Rev. 2 design
SIM2-PWR signal route	Pin 13	Pin 16
SIM2-RESET signal route	Pin 17	Pin 6
<b>Indicator LEDs</b>		
Green LED	DC-DC power circuit enabled state	
Blue LED	Wwan activity signal state	
<b>External power supply input</b>		
Connector type	3-pin Molex KK254 2695 series	
Voltage rating	Recommended: +5V to 14V DC Absolute min/max: +4.5V to 14.8V DC	
Power rating	16W capable supply	
<b>USB connector</b>		
Type	USB3 type A plug	
Electrical rating	+5V DC (9W / 1800mA capable supply)	
Signal interfaces	USB3, USB2	
<b>Package content</b>		
Adapter	1x PU201	1x PU202
Distance	2x M2.5x2.7mm steel distance	
Screw	4x M2.5x2mm steel screw	
Pin header jumper	1x 2.54mm (for USB3 plug powered mode)	
<b>Compliance</b>		
Environmental	RoHS, REACH	
<b>Others</b>		
Country of origin	Sweden	



**Web and Support**  
Techship.com

**Europe**  
sales@techship.com  
+46 (0) 31 730 32 00

**North America**  
americas@techship.com  
+1 (919) 659 8191