

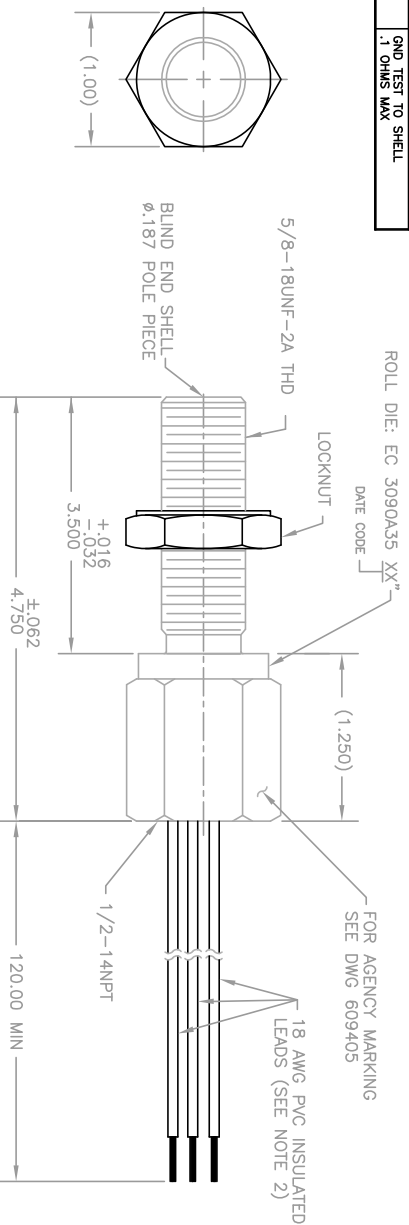
SPECIFICATION DATA	
PARAMETER	VALUE
OUTPUT VOLTAGE	60V Pk-Pk MIN
COIL RESISTANCE	280 OHMS MAX
INDUCTANCE	115mH MAX @ 1KHz
DIELECTRIC STRENGTH	125KV RMS AT 60HZ FOR 1 SECOND TO EXCEED 100V PER SECOND
LEAKAGE RESISTANCE	100 MEGOHMS MINIMUM
TEMPERATURE LIMITS	-100°F TO +200°F
GROUND TEST	1. OHMS TO SHELL .1 OHMS MAX


NOTES:

- 1) TESTEAT 1000 I.P.S. WITH A 8 PITCH, 12 TOOTH GEAR AT .005 INCH CLEARANCE AND A LOAD OF 100K OHMS.
- 2) POLARITY: WHEN FERROUS METAL ENTERS MAGNETIC FIELD, WHITE LEAD WILL BE POSITIVE WITH RESPECT TO BLACK LEAD. GREEN GROUND WIRE IS SOLDERED TO INSIDE WALL OF SHELL HOUSING.

NOTE: DO NOT ECR WITHOUT AGENCY APPROVAL
DO NOT SHORT LEADS WHEN MAGNETIZING

REVISIONS		
REV	DESCRIPTION	DATE
L	REDRAWN WITHOUT CHANGE	3/17/99
M	NOTES UPDATED PER BASEEFA CERTIFICATION REQUIREMENTS	11/25/11
		HMP



UNLESS OTHERWISE SPECIFIED DIMENSIONS ARE IN INCHES		TITLE	
DO NOT SCALE DRAWING		VRS SENSOR AGENCY LISTED	
.XXX DECIMAL & .010 .XX DECIMAL & .03 FRACTIONS & 1/32 ANGLES & 5°		 ELECTRO CORPORATION	
THIS COMPANY IS THE PROPERTY OF ELECTRO CORPORATION AND MAY NOT BE REPRODUCED EITHER IN FULL OR IN PART WITHOUT WRITTEN APPROVAL BY ELECTRO CORPORATION.		DATE NO. 3090A35	
MATERIAL: 1/2" RUS OR BETTER ON A MACHINED PARTS 1/4" RUS OR BETTER ON MOUNTING PLATE 2005/012 IN ALL AREAS		REVISED BY M	
SHELL: NON-MAGNETIC SSTL		DRAWING INTERPRETATION SHEET 1 OF 1	
SPEC. CONT. UL		SCALE NONE	
<div> <div>DRAWN</div> <div>MDT</div> <div>CHKD.</div> <div>PL</div> <div>ENGR.</div> <div>WFM</div> </div>		<div> <div>2/23/79</div> <div>2/10/79</div> <div>3/5/81</div> </div>	

3RD ANGLE PROJECTION

UNCONTROLLED COPY. REVISIONS WILL NOT BE
AUTOMATICALLY UPDATED. CONFIRM APPROPRIATE
REVISION LEVEL WITH ELECTRO CORPORATION.