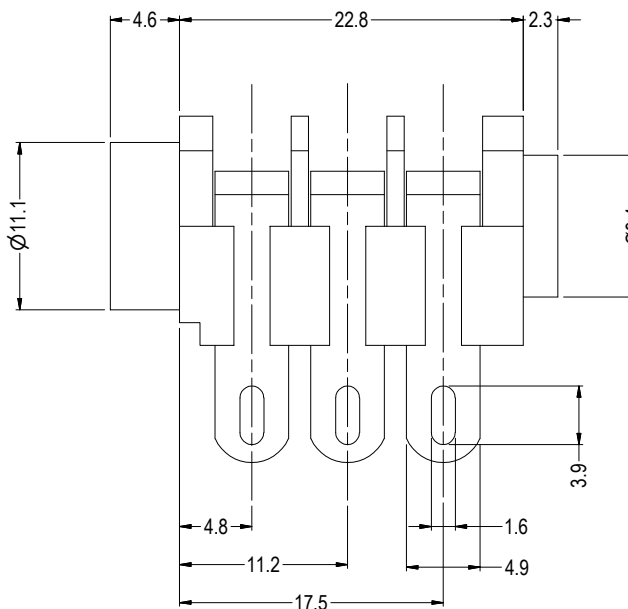
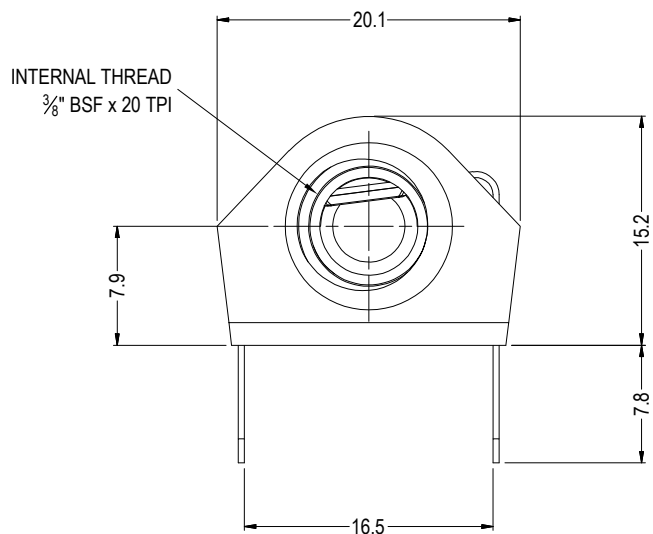


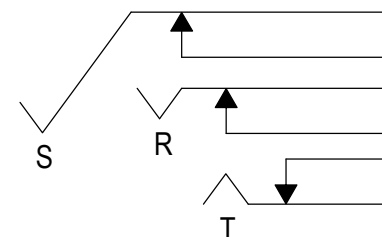
NOTES:-

1. MAXIMUM PANEL THICKNESS 4.3mm.
2. SUPPLIED WITH NUT, BEZEL & WASHERS ASSEMBLED.

ISS.	AMEND	DATE
1	REDRAWN	02/05/2014



SCHEMATIC



SWITCH CONTACTS OPEN WHEN PLUG IS INSERTED, CLOSE WHEN PLUG IS WITHDRAWN.

RoHS
COMPLIANT

TOLERANCE
NO DEC. PLACE ±
1 DEC. PLACE ± 0.20
2 DEC. PLACE ±
HOLE Ø ±
ANGLES ± 1/2°
UNLESS OTHERWISE STATED

DO NOT SCALE

1ST DRAWN : 11/01/1991

3rd ANGLE PROJECTION:

Cliff Electronic Components Ltd.
76 Holmethorpe Avenue, Holmethorpe Industrial Estate,
Redhill, Surrey, RH12PF, England, UK
Tel: 01737-771375 Fax: 01737-766012 Website: www.cliffuk.co.uk

DIMENSIONS IN MILLIMETERS UNLESS OTHERWISE STATED. WORK TO DIMENSIONS. REMOVE ALL BURRS. IF IN DOUBT ASK.

MATERIAL: NYLON / NiAg / FIBRE / POM / BRASS

FINISH: AS MOULDED / MICROFINISH

DRAWN: NJB

APPROVED: DPJ

TITLE: JACK SOCKET S4/BBB/ST BLACK

DRWG. No. **CL1322A**

FORM: A4DRWGH