

RUGGED HIGH-SPEED STRIPS

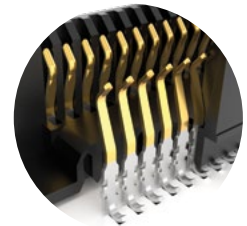


| | |
|------------|------------|
| NRZ | PAM4 |
| 28 Gbps | 56 Gbps |

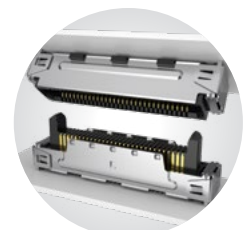
FEATURES & BENEFITS

Edge Rate® rugged high-speed connector strips are designed for high-speed, high cycle applications, and enabled by Samtec's signal integrity-optimized Edge Rate® contact system.

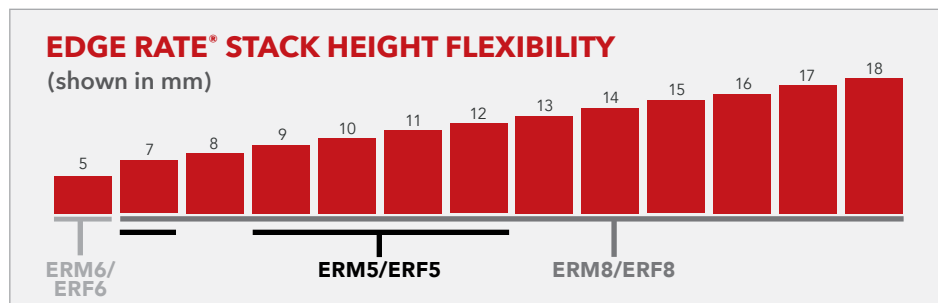
- Up to 1.5 mm contact wipe for a reliable connection
- 20 to 200 positions
- Choice of 0.50 mm, 0.635 mm or 0.80 mm pitch
- 0.50 mm pitch system offers up to 40% PCB space savings vs. 0.80 mm pitch
- 0.635 mm pitch system with extremely slim 2.5 mm body width
- Rugged latching, extended guide posts and 360° shielding
- Severe Environment Testing qualified (ERM8/ERF8); aligns with MIL-DTL-55302. Visit samtec.com/set



Signal integrity-optimized Edge Rate® contact system reduces broadside coupling



Rugged 360° shielding reduces EMI



KEY SPECIFICATIONS

| SERIES | PITCH | INSULATOR MATERIAL | TERMINAL MATERIAL | PLATING | OPERATING TEMP RANGE | CURRENT RATING | VOLTAGE RATING | LEAD-FREE SOLDERABLE |
|-------------|----------|--------------------|--|---|----------------------|----------------|----------------|----------------------|
| ERM5 / ERF5 | 0.50 mm | Black LCP | Phosphor Bronze or BeCu (ERM5), BeCu (ERF5) | Au or Sn over 50 μ" (1.27 μm) Ni | -55 °C to +125 °C | 1.5 A | 190 VAC | Yes |
| ERM6 / ERF6 | 0.635 mm | | Copper Alloy | | | 1.4 A | 155 VAC | |
| ERM8 / ERF8 | 0.80 mm | | Phosphor Bronze or BeCu (ERM8), BeCu (ERF8) | | | 1.4 A | 225 VAC | |

(0.80 mm) .0315" PITCH • RUGGED HIGH-SPEED HEADERS & SOCKETS

| TYPE | POSITIONS PER ROW | LEAD STYLE | PLATING OPTION | DV | OPTIONS | "X"R |
|------|-------------------|------------|----------------|----|---------|------|
|------|-------------------|------------|----------------|----|---------|------|

ERM8
= Header
ERF8
= Socket

-005, -010, -011, -013, -020, -025, -030, -035, -040, -049, -050, -060, -070, -075, -100

(100 Position Only Available with ERM8-09.0 & ERF8-05.0 Lead Styles; -L or -EGP N/A)

SPECIFY LEAD STYLE FROM CHART

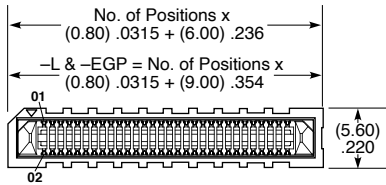
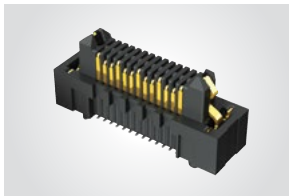
-L
= 10 μ" (0.25 μm)
Gold on contact,
Matte Tin on tail
-S
= 30 μ" (0.76 μm)
Gold on contact,
Matte Tin on tail

-DS
= Differential Pair
(ERM8 -05.0 Lead Style with -010, -013, -025, -049 Positions only) (-P not available)
-L
= Latching
(ERM8 -03.0, -05.0 & -09.0 Lead Styles only & -EGP Option not available)
(ERF8 -05.0, -07.0 & -09.0 Lead Style only, -L & -EGP Options not available)

-TR
= Tape & Reel
(100 Positions N/A)
-FR
= Full Reel
Tape & Reel
(must order maximum quantity per reel; contact Samtec for quantity breaks)
(100 Positions N/A)

ERM8
Board Mates:
ERF8

Cable Mates:
ERCD, ERDP



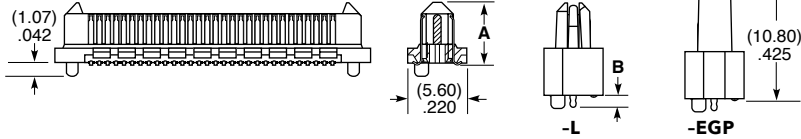
| ERM8 LEAD STYLE | A | B |
|-----------------|--------------|-------------|
| -02.0 | (5.97) .235 | N/A |
| -03.0 | (6.97) .274 | (1.60) .063 |
| -05.0 | (8.91) .351 | (1.17) .046 |
| -08.0 | (11.91) .469 | N/A |
| -09.0 | (12.91) .508 | (1.60) .063 |

-EGP
= Extended Guide Post
(ERM8 -05.0 & ERF8 -07.0 Lead Style Only & -L Option not available)

-DSP
= Differential Pair with Extended Guide Post
(ERM8 -05.0 Lead Style with -013 and -025 Positions only)

-K
= Polyimide Film Pick & Place Pad
(-02.0 Lead Style not available)

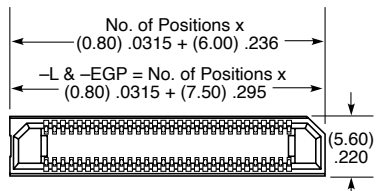
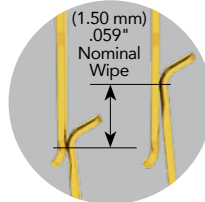
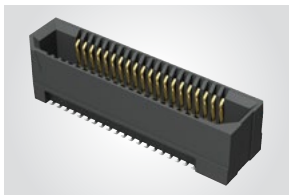
-P
= Pick & Place Pad
(ERM8 -02.0, -03.0 & -05.0 Lead Styles only) (-DS not available)



View complete specifications at: samtec.com?ERM8

ERF8
Board Mates:
ERM8

ERF8
Cable Mates:
ERCD, ERDP

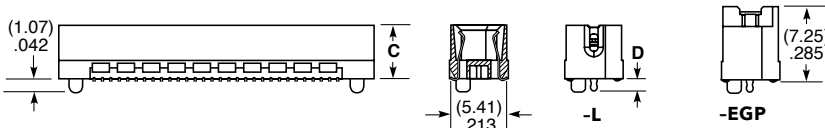


| ERF8 LEAD STYLE | C | D |
|-----------------|-------------|-------------|
| -05.0 | (5.34) .210 | (1.60) .063 |
| -07.0 | (7.25) .285 | (1.17) .046 |
| -09.0 | (9.34) .368 | (1.60) .063 |

| ERM8 LEAD STYLE | MATED HEIGHT* | | |
|-----------------|-----------------------|--------------|--------------|
| | ERF8 LEAD STYLE -05.0 | -07.0 | -09.0 |
| -02.0 | (7.00) .276 | (9.00) .354 | (11.00) .433 |
| -03.0 | (8.00) .315 | (10.00) .394 | (12.00) .472 |
| -05.0 | (10.00) .394 | (12.00) .472 | (14.00) .551 |
| -08.0 | (13.00) .512 | (15.00) .591 | (17.00) .669 |
| -09.0 | (14.00) .551 | (16.00) .630 | (18.00) .709 |

*Processing conditions will affect mated height.

Notes:
Severe Environment Testing qualified; aligns with MIL-DTL-55302. Visit samtec.com/set



Some lengths, styles and options are non-standard, non-returnable.

View complete specifications at: samtec.com?ERF8