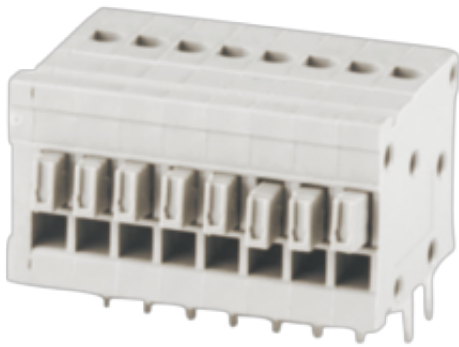


WJ211R-2.5
PCB SPRING TERMINAL BLOCK



PCB spring terminal block
 Rated current: 5 A
 Rated voltage: 150 V
 Wire range: 26-18 AWG
 Pitch: 2.5 mm
 Mounting: Wave soldering



UL/CUL

Use Group	B	C	D
Rate Voltage [V]	150	-	-
Rated Current [A]	5	-	-
Wire Range [AWG]	26~18		
Dielectric Voltage-Withstand	1.3KV		

IEC

Overvoltage Category	III	III	II
Contamination Class	3	2	2
Rated Voltage [V]	63	160	320
Rated Current [A]	6	6	6
Impulse withstand voltage [KV]	2.5	2.5	2.5
Conductor cross section[solid/flexible] [mm ²]	0.2~0.5		

Material

Insulation Material	PA66
Flame retardant rating	UL94V-0
Conductor Material	Copper alloy
Plating of conductor surface	Sn plated

Other Data

Pitch/Poles [mm]/[P]	2.5/1~30
Stripping Length [mm]	11
Screw/Torque(Max)[N.m]	/
Operating temperature [°C]	-40~+105
Soldering temperature	260°C/5S
Pin dimensions [mm]	0.7*0.4
PCB Hole Diameter [mm]	□1.0

Dimensions

PCB opening diagram

