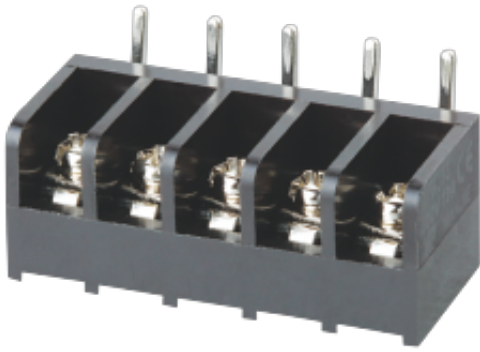


WJ16R
BARRIER TERMINAL BLOCK



Material

Screws	M3.0 Steel Ni plated
Pin Header	Copper alloy , Sn plated
Housing	PA66 , UL94V-0

Electrical

Standard	UL	IEC
Rated Voltage	300V	250V
Rated current	10A	17.5A
Wire range	22-16AWG	1.5mm ²
Contact Resistance	20mΩ	
Insulation resistance	500MΩ/DC500V	
Withstanding voltage	AC2000V/1Min	

Other Data

Pitch/Poles [mm]/[P]	6.35/2-30
Operating temperature [°C]	-40°C~+105°C
Torque	5.1Kgf.cm/0.5Nm/4.43Lb.in

Dimensions

PCB opening diagram

