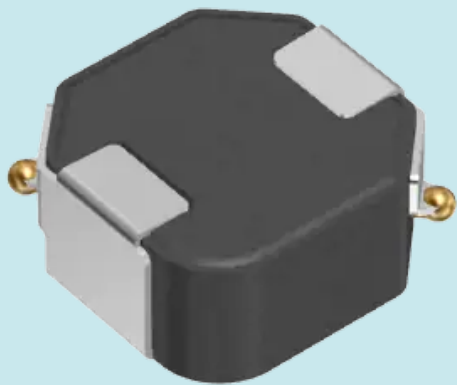


SPM4020-DZ-KIT

Wound Metal Automotive Power Inductor
Sample Kit



SPM4020-DZ type

AEC-Q200

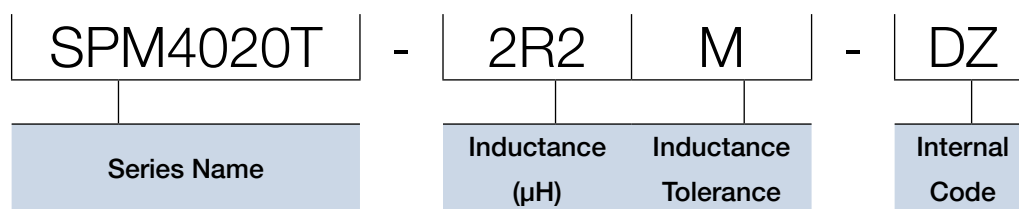
Features

- Metal composite type wound inductor for power circuits using a metallic magnetic material
- Compared to ferrite wound type inductors, low R_{dc} and miniaturization can be realized due to superior DC superimposition characteristics of metallic magnetic materials
- Operating temperature range: -55 to +155°C (including self-temperature rise)
- Compliant with AEC-Q200

Application

- Automotive-related equipment (ADAS, ECM, BCM)

Part Number Construction



L (μ H)	Tolerance	DC Resistance		Rated Current			Part Number	Kit Quantity
		max (m Ω)	typ. (Ω)	I _{sat} (A) typ. (Δ L=-20%)	(Δ L=-30%)	I _{temp} (A) typ. (Δ T=40degC)		
0.10	±30%	4.95	4.50	24.6	31.8	11.3	SPM4020T-R10N-DZ	5
0.22	±30%	8.36	7.60	18.5	23.8	8.7	SPM4020T-R22N-DZ	5
0.47	±20%	11.6	10.5	12.3	16.7	7.8	SPM4020T-R47M-DZ	5
1.0	±20%	28.2	25.6	7.9	10.9	4.9	SPM4020T-1R0M-DZ	5
1.5	±20%	39.5	35.9	6.1	8.5	4.1	SPM4020T-1R5M-DZ	5
2.2	±20%	66.0	60.0	4.6	6.2	3.1	SPM4020T-2R2M-DZ	5