



ISL Products International

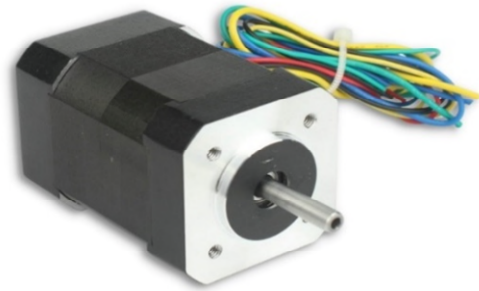
**ø 42mm BLDC Motor
3-Phase Brushless
MOT-BL-42S3-24V**

Online ID#: **BLDC-J42-81-24-5800-03**

Our BLDC Motors are a high quality solution providing excellent speed and torque output with superior reliability and control.

With endless performance combinations, we have a fully tailored gear motor solution for you.

Contact Us for alternative solutions!



Specifications			
Motor Type:	Brushless - 8 Pole	No-Load Speed:	5,800 rpm (+/- 10%)
Rated Voltage:	24V DC	No-Load Current:	< 0.6 A
Rated Speed:	4,000 rpm	Back EMF:	4.1 V/krpm
Rated Torque:	1.89 kg.cm	Torque Constant:	0.407 kg.cm/A
Rated Current:	4.8 A	Max. Power:	89 W
Phase Resistance:	0.55 ohms	Termination Style:	Lead Wires (20/26AWG)

Dimensions

units: mm

Electrical Connection Table			
+5V	RED	UL1007 26 AWG	
Hall U	YEL		
Hall V	GRE		
Hall W	BLU	UL1007 20AWG	
GRD	BLK		
Phase U	YEL		
Phase V	GRE		
Phase W	BLU		

Note: hall sensor power supply voltage +5 to +20VDC

