



ISL Products International

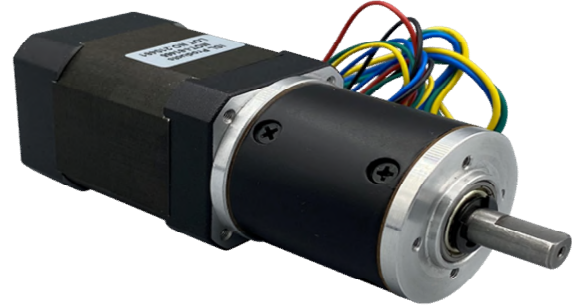
ø 42mm BLDC Planetary Gear Motor 3-Phase Brushless MOT-I-81614

Online ID#: PGMBL-J42-24-15-433-03C

Our BLDC Planetary Gear Motors are an inline solution providing excellent torque output and superior reliability and control.

With endless performance combinations, we have a fully tailored gear motor solution for you.

Contact Us for alternative solutions!



Specifications			
Gearhead Type:	Planetary	No-Load Speed:	433 rpm (+/- 10%)
Motor Type:	Brushless - 8 Pole	No-Load Current:	< 0.75 A
Rated Voltage:	24V DC	Max. Power:	68 W
Rated Speed:	266 rpm	Max. Current:	14 A
Rated Torque:	22 kg.cm	Reduction Ratio:	15:1
Rated Current:	5 A	Termination Style:	Lead Wires (20/26AWG)

Dimensions

units: mm

Electrical Connection Table		
+5V	RED	
Hall U	YEL	UL1007
Hall V	GRE	26 AWG
Hall W	BLU	
GRD	BLK	
Phase U	YEL	UL1007
Phase V	GRE	20AWG
Phase W	BLU	

Note: hall sensor power supply voltage +5 to +20VDC

