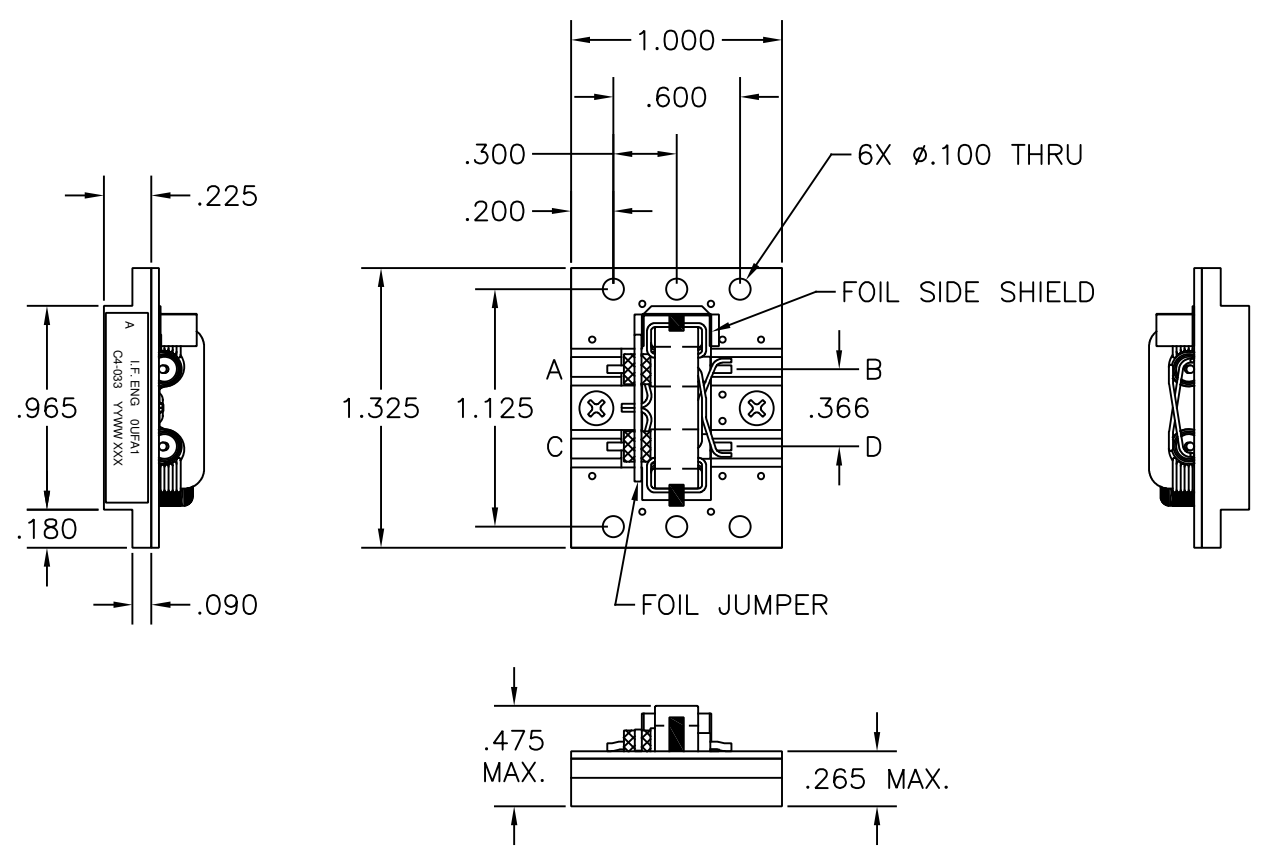


THIS DOCUMENT CONTAINS PROPRIETARY INFORMATION. ANY REPRODUCTION, DISCLOSURE, OR USE OF ITS CONTENTS IS EXPRESSLY PROHIBITED EXCEPT AS AUTHORIZED BY I.F. Engineering Corp

REVISION			
LTR.	DESCRIPTION	DATE	APPVL.
-	RELEASED	12/7/04	AFB
A	ADDED SIDE VIEW	12/7/05	RJB
B	Update Electrical Spec.	1/7/06	LCF
C	REDRAWN/UPDATED FORMAT; .090 DIM. WAS .140; .225 DIM. WAS .250; .265 DIM. WAS .275; .475 DIM. WAS .500; TEMPERATURE RANGE CHANGED	12/4/07	MJD
D	CHANGED PER ECN 0846007	11/13/08	MJD
E	CHANGED PER ECN 1011002	4/7/10	MJD
F	CHANGED PER ECN 1228001	7/13/12	MJD
G	CHANGED PER ECN 1532004	8/14/15	JRY
H	ECO #1926001	6/24/19	MJD



ELECTRICAL SPECIFICATION DIRECTIONAL COUPLER	
FREQUENCY RANGE (MHZ)	20-512
COUPLING (dB) NOM.	20
COUPLING TOL. (dB) MAX.	±2.0
COUPLING VARIATION (dB) MAX.	±2.0
INSERTION LOSS (dB) MAX.	0.30
DIRECTIVITY (dB) MIN.	18
VSWR MAX.	1.25:1
IMPEDANCE (OHMS) NOM.	50
TEMPERATURE RANGE (°C)	-40 TO +85
Note: INPUT POWER 120 WATTS CW MAX.	

INPUT POWER	THERMAL RISE
50W CW	15°C
100W CW	23°C

PORT	DESIG.
A	INPUT
B	OUTPUT
A-C	COUPLED
B-D	COUPLED

**RoHS
Compliant**

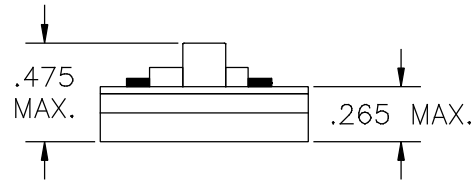
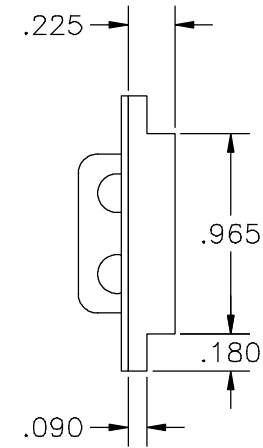
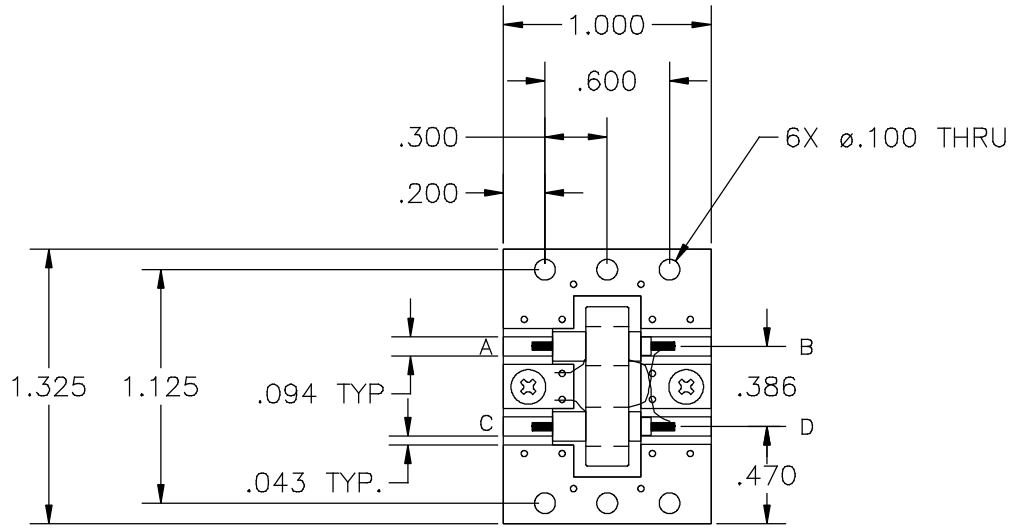
THIRD ANGLE PROJECTION		DRAWN	DATE
UNLESS OTHERWISE SPECIFIED DIMENSIONS MEASURED IN INCHES DRAWING PRACTICES PER ASME Y14.100		LCF	12/5/04
		ENGRG APPD	DATE
TOLERANCES ANGLES ±1/2° .XX ±.01 .XXX ±.005		AFB	12/7/04
		MFG APPD	DATE
MATERIAL: SEE NOTE 1		EDW	12/7/04
		QA APPD	DATE
FINISH: SEE NOTE 2		EDW	12/7/04
		RELEASED	DATE
		AFB	12/7/04

I.F. ENGINEERING			
3 FOSHAY ROAD, DUDLEY MA 01571			
TITLE			
OUTLINE DRAWING			
C4-033 DIR. COUPLER			
SIZE	CODE IDENT NO.	DRAWING NO.	REV.
A	OUF'A1	100-033-181	H
SCALE	1:1	SHEET 1 OF 1	

- NOTES:
1. MATERIAL: BASE PLATE ALUMINUM
 2. FINISH: CLEAR CHROMATE
 3. SPECIFICATION SUBJECT TO CHANGE WITHOUT NOTICE

REVISION

LTR.	DESCRIPTION	DATE	APPVL.
	RELEASED	5/22/12	AFB



PORT	DESIG.
A	INPUT
B	OUTPUT
A-C	COUPLED
B-D	COUPLED

NOTES:

1. MATERIAL: BASE PLATE ALUMINUM
2. FINISH: CLEAR CHROMATE
3. SPECIFICATION SUBJECT TO CHANGE WITHOUT NOTICE
4. MOUNTING INTO POCKET IN BASEPLATE USING THERMAL PAD OR GREASE IS RECOMMENDED. 6 SCREW HOLES HAVE CLEARANCE FOR 2-56 SCREWS.

UNLESS OTHERWISE SPECIFIED DRAWING PRACTICES PER MIL-STD-100	DRAWN AFB	DATE 5/22/12
TOLERANCES ANGLES ±1/2° .XX ±.01 .XXX ±.005	ENGRG APPD AFB	DATE 5/22/12
SURFACE 63 / REMOVE BURRS ROUGHNESS / SHARP EDGES	MFG APPD	DATE
MATERIAL: SEE NOTE 1	QA APPD	DATE
FINISH: SEE NOTE 2	RELEASED AFB	DATE 5/22/12

IFE ENGINEERING
40 PARKER ROAD, FAYAN CT 06255

TITLE
MOUNTING DIMENSIONS,
C4-033 DIR. COUPLER

SIZE	CODE IDENT NO.	DRAWING NO.	REV.
A	OUF A1	100-033-182	
SCALE	1:1	SHEET	1 OF 1