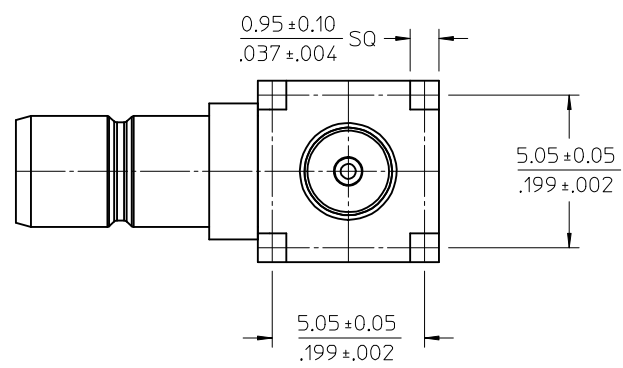
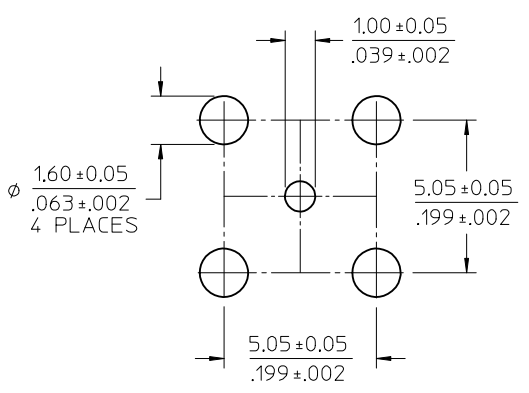
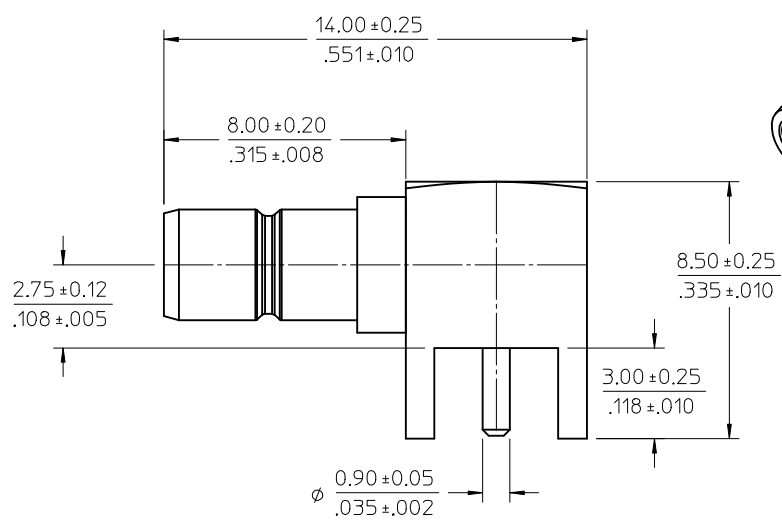
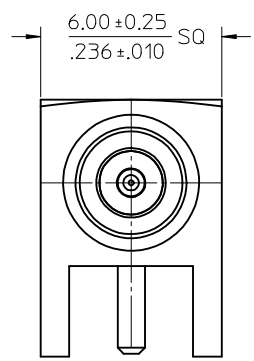
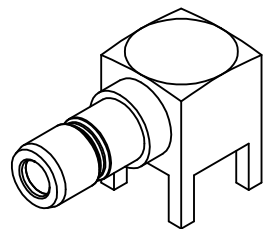


MATERIAL & FINISHES:

- BODY BRASS
PLATED GOLD
- INSULATOR TEFLON
- CENTER CONTACT BRASS
PLATED GOLD
- HOUSING BRASS
PLATED GOLD
- PACKAGING BY TRAY



PS-73598-0099	PRODUCT SPECIFICATION
MIL-STD-348A, FIG. 311.2	SMB INTERFACE
SPECIFICATION	DESCRIPTION

NEW RELEASED PDR: 07-004 ECN: 2007-0102 DRWNSCHOU 2006/09/08 CHKD: 2006/09/14 APPR: MHIANG 2006/09/14	QUALITY SYMBOLS	GENERAL TOLERANCES (UNLESS SPECIFIED) <table border="1"> <tr> <td></td> <td>mm</td> <td>INCH</td> </tr> <tr> <td>4 PLACES</td> <td>± .005</td> <td>± .0002</td> </tr> <tr> <td>3 PLACES</td> <td>± .005</td> <td>± .0002</td> </tr> <tr> <td>2 PLACES</td> <td>± .005</td> <td>± .0002</td> </tr> <tr> <td>1 PLACE</td> <td>± .005</td> <td>± .0002</td> </tr> </table> ANGULAR ± 2° DRAFT WHERE APPLICABLE MUST REMAIN WITHIN DIMENSIONS		mm	INCH	4 PLACES	± .005	± .0002	3 PLACES	± .005	± .0002	2 PLACES	± .005	± .0002	1 PLACE	± .005	± .0002	DIMENSION STYLE IN/MM SCALE DESIGN UNITS INCH THIRD ANGLE PROJECTION	DRAWN BY JOYCE DATE 2006/07/19 CHECKED BY JOHNSON DATE 2006/07/19 APPROVED BY MISEN DATE 2006/07/19	TITLE SMB JACK, R/A PCB RECEPTACLE, 50 OHMS SMB-JP MOLEX INCORPORATED	MATERIAL NO. 73396-0520 DOCUMENT NO. SD-73396-052	SHEET NO. 1 OF 1
			mm	INCH																		
	4 PLACES		± .005	± .0002																		
	3 PLACES		± .005	± .0002																		
2 PLACES	± .005	± .0002																				
1 PLACE	± .005	± .0002																				
REV	DESCRIPTION	SIZE	THIS DRAWING CONTAINS INFORMATION THAT IS PROPRIETARY TO MOLEX INCORPORATED AND SHOULD NOT BE USED WITHOUT WRITTEN PERMISSION																			
A		C																				