

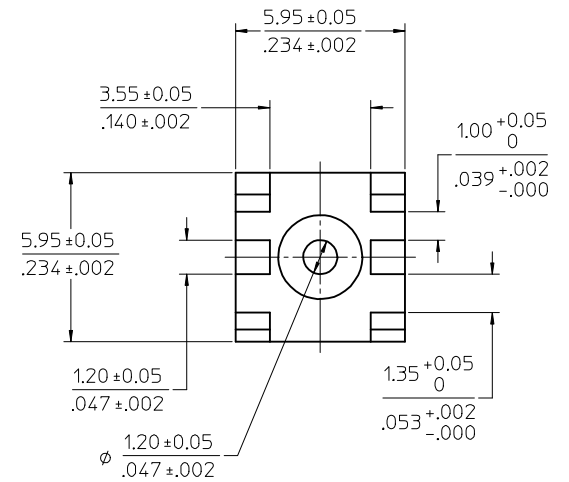
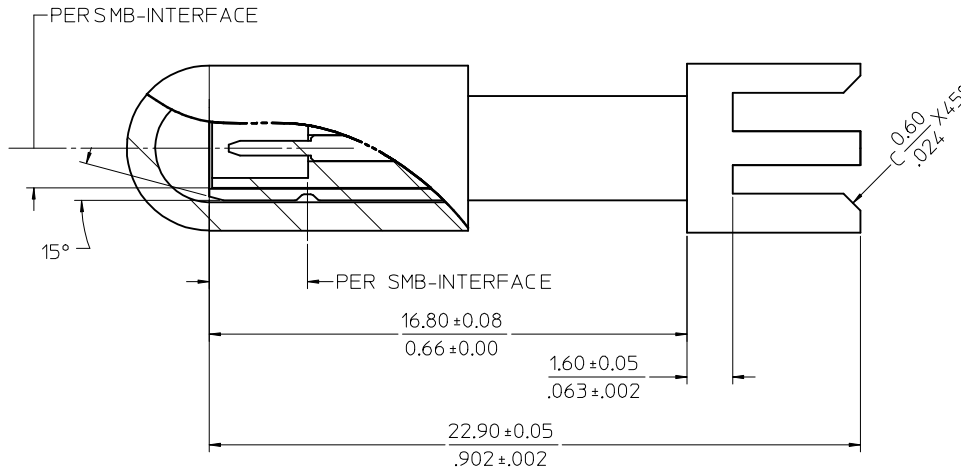
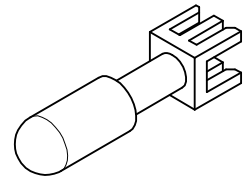
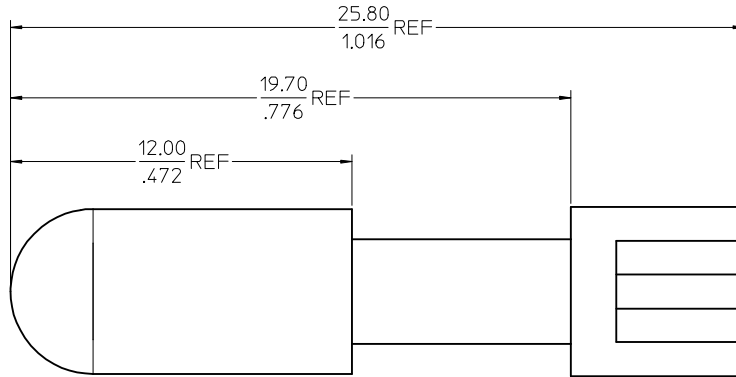
MATERIALS AND FINISHES

BODY : BRASS  
PLATED GOLD

CENTER CONTACT :  
PHOSPHOR BRONZE/BRASS  
PLATED GOLD

INSULATOR : TEFLON

DUST COVER : PVC / BLK



ES-73599-0000-013	INTERFACE DIMENSION
PS-73598-0099	PRODUCT SPECIFICATION
SPECIFICATION	DESCRIPTION

2	73396-0261	WITHOUT DUST COVER
1	73396-0260	WITH DUST COVER
	PART	DESCRIPTION

ADD P/N: 73396-0261 EC NO: URF2006-0425 DRWN: SCHOU 2006/04/11 CHKD: 2006/04/12 APPR: HUANG 2006/04/13	QUALITY SYMBOLS	GENERAL TOLERANCES (UNLESS SPECIFIED)	DIMENSION STYLE	SCALE	TITLE
	▽=0 ▽=0	4 PLACES ± --- ± --- 3 PLACES ± --- ± --- 2 PLACES ± 0.13 ± --- 1 PLACE ± 0.25 ± --- ANGULAR ± 2 °	MM/IN	METRIC	THIRD ANGLE PROJECTION
DESCRIPTION	DRAFT WHERE APPLICABLE MUST REMAIN WITHIN DIMENSIONS	SIZE	MATERIAL NO. SD-73396-026		
REV			DOCUMENT NO. SD-73396-026		
			SHEET NO. 1 OF 1		

DRAWN BY DARRY DATE 2003/07/01		DATE 2003/07/01	
CHECKED BY KERRIE DATE 2003/07/01		DATE 2003/07/01	
APPROVED BY MISEN DATE 2003/07/01		DATE 2003/07/01	
MATERIAL NO. SD-73396-026		DOCUMENT NO. SD-73396-026	
SIZE A2		THIS DRAWING CONTAINS INFORMATION THAT IS PROPRIETARY TO MOLEX INCORPORATED AND SHOULD NOT BE USED WITHOUT WRITTEN PERMISSION	