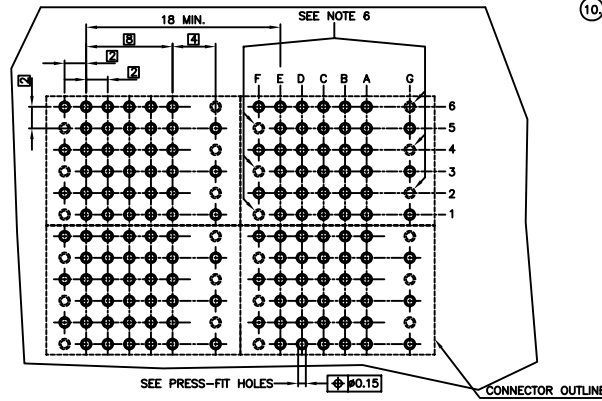
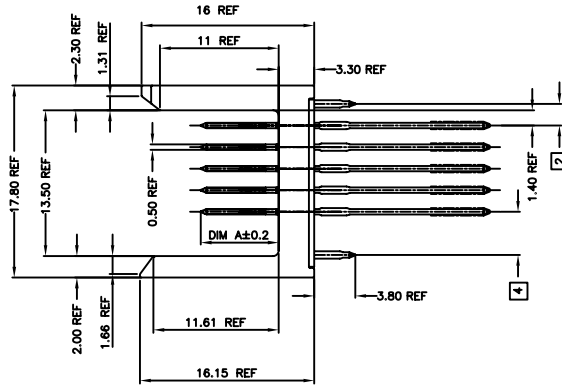
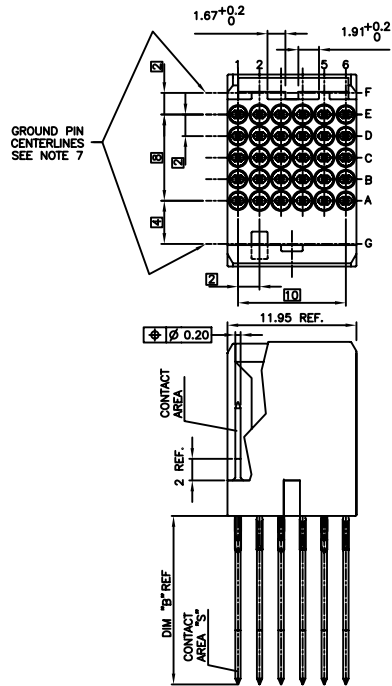


PRODUCT NUMBER
72018-XYT
72018-XYLF



REQUIRED PC BOARD LAYOUT
COMPONENT SIDE
SEE PRINT 58351 FOR
ADDITIONAL PCB INFORMATION

PLATING IN CONTACT AREA	
DASH NUMBER	PERFORMANCE LEVEL
-1YY	TELCORDIA CO
-2YY	TELECOM CLASS
-3YY	IEC CLASS 1
-5YY	TELCORDIA UE
-9YY	0.762m GXT
-1YLF	TELCORDIA CO
-2YLF	TELECOM CLASS
-3YLF	IEC CLASS 1
-5YLF	TELCORDIA UE
-9YLF	0.762m GXT

NOTES:

- FOR DIM "A", AND "B" SEE SHEET 2
- BODY MAT'L: ZINC ALLOY
- PIN MAT'L: PHOSPHOR BRONZE.
- CONTACT AREA "S" ONLY FOR REAR PLUG-UP.
- PLATING ON PRESSFIT AREA: -XYT IS SnPb
-XYLF IS Sn (LEAD FREE)
- THESE HOLES ARE NEEDED WHEN USING AN EE SHROUD, I.e., 70438-111.
- GROUND PINS IN POSITIONS F2, F4, F6, G1, G3, AND G5.
- DIM "A" AFTER ASSEMBLY TO BOARDS.
- THE PRODUCTS WHERE THE PART NUMBER ENDS IN LF MEET THE EUROPEAN UNION DIRECTIVES AND OTHER COUNTRY REGULATIONS AS DESCRIBED IN GS-22-008.
THESE PRODUCTS WILL NOT WITHSTAND WAVE SOLDER OR REFLOW OPERATIONS.
- FOR LEAD FREE PART NUMBERS, ADD AN 'LF' SUFFIX. EXAMPLE: 72018-X11LF.

mat'l. code		surface		tolerance		projection		product family	
SEE NOTES		ASME Y14.5		ASME Y14.5		MM		METRAL (tm)	
ltr	ec'n no	dr	date	tolerances unless otherwise specified		MM		title	
H	V03-1127	HTB	2003-20-27	angles	X #3	1:1		5 ROW P.F. EE HDR. ASSY.-12MM-SEL. LOAD	
J	V04-0609	TAB	2004-07-08	0° ±2'	XX ±.13	1:1		dwg no	
K	V05-0575	DAI	2005-08-08	dr	XXX ±.051	1:1		sheet 1 of 2	
L	V06-0606	JRV	2006-06-21	engr	S. STONER 1996-08-12	FCI		72018	
				chr	R. DOUTRICH 1996-08-12			size	
				appd	S. STONER 1996-08-12			A4	
sheet index	revision sheet	L	L					type	
		1	2					CUSTOMER Drawing	

METRAL P/N	CONTACT CODE						
	ROW	1	2	3	4	5	6
72018-X01	E	03	03	01	02	02	02
	D	03	03	01	02	02	02
NOTE 10 LEAD FREE OPTION	C	03	03	01	02	02	02
	B	03	03	01	02	02	02
	A	03	03	01	02	02	02

METRAL P/N	CONTACT CODE						
	ROW	1	2	3	4	5	6
72018-X02	E	01	01	01	01	03	04
	D	01	01	01	01	03	04
NOTE 10 LEAD FREE OPTION	C	01	01	01	01	03	04
	B	01	01	01	01	03	04
	A	01	01	01	01	03	04

METRAL P/N	CONTACT CODE						
	ROW	1	2	3	4	5	6
72018-X03	E	04	03	03	01	01	01
	D	04	03	03	01	01	01
NOTE 10 LEAD FREE OPTION	C	04	03	03	01	01	01
	B	04	03	03	01	01	01
	A	04	03	03	01	01	01

METRAL P/N	CONTACT CODE						
	ROW	1	2	3	4	5	6
72018-X04	E	02	19	02	02	02	02
	D	02	02	19	02	02	01
NOTE 10 LEAD FREE OPTION	C	02	19	02	02	02	19
	B	02	02	19	02	02	01
	A	02	19	02	02	02	19

METRAL P/N	CONTACT CODE						
	ROW	1	2	3	4	5	6
72018-X05	E	03	03	03	03	03	03
	D	03	03	03	03	03	03
NOTE 10 LEAD FREE OPTION	C	01	03	03	03	03	03
	B	03	03	03	03	03	03
	A	03	03	03	03	03	03

METRAL P/N	CONTACT CODE						
	ROW	1	2	3	4	5	6
72018-X06	E	03	03	03	03	03	03
	D	03	03	03	01	03	03
NOTE 10 LEAD FREE OPTION	C	03	03	03	03	03	03
	B	03	03	03	03	03	03
	A	03	03	03	03	03	03

METRAL P/N	CONTACT CODE						
	ROW	1	2	3	4	5	6
72018-X07	E	03	19	03	03	03	03
	D	03	19	03	03	03	03
NOTE 10 LEAD FREE OPTION	C	03	19	03	03	03	03
	B	03	19	03	03	03	03
	A	03	19	03	03	03	03

KEY *		
CODE	DIMENSIONS	
	DIM "A"	DIM "B"
01	5.00	4.30
02	5.75	4.30
03	6.50	4.30
04	7.25	4.30
19	8.00	4.30

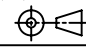

* AFTER INSERTION INTO CIRCUIT BOARD WITH QUALIFIED TOOLING

A

A

B

B

mat'l. code		surface		tolerance		projection		product family	
SEE NOTES		ASME Y14.5		ASME Y14.5				METRAL (tm)	
ltr	ecn no	dr	date	tolerances unless otherwise specified		MM		title	
L				angles	X ±3	←		5 ROW P.F. EE HDR.	
				linear	.XX ±.13	→		ASSY.-12MM-SEL. LOAD	
				0° ±2'	.XXX ±.051	scale 1:1		dwg no	
		dr	S. STONER	1996-08-12				sheet 2 of	
		engr	R. DOUTRICH	1996-08-12				72018	
		chr	S. STONER	1996-08-12				size	
		appd	S. STONER	1996-08-12				A4	
sheet index	revision sheet							type	
								CUSTOMER Drawing	