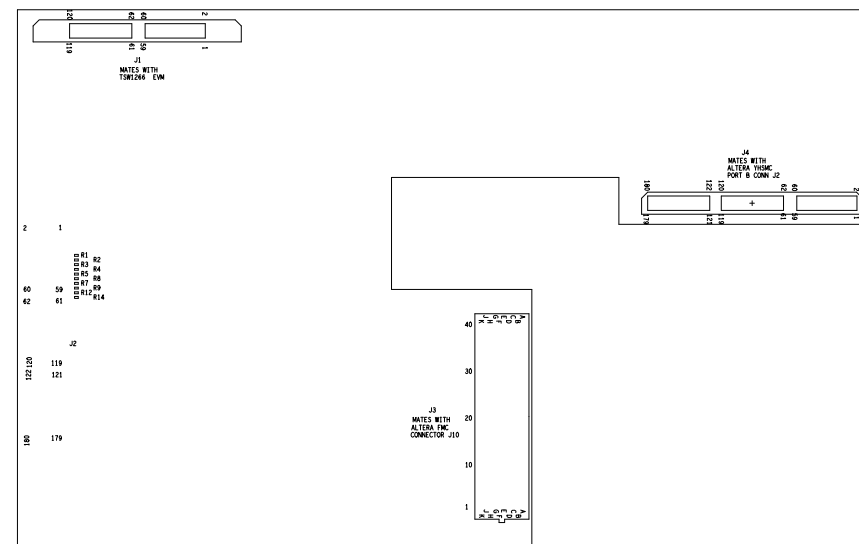
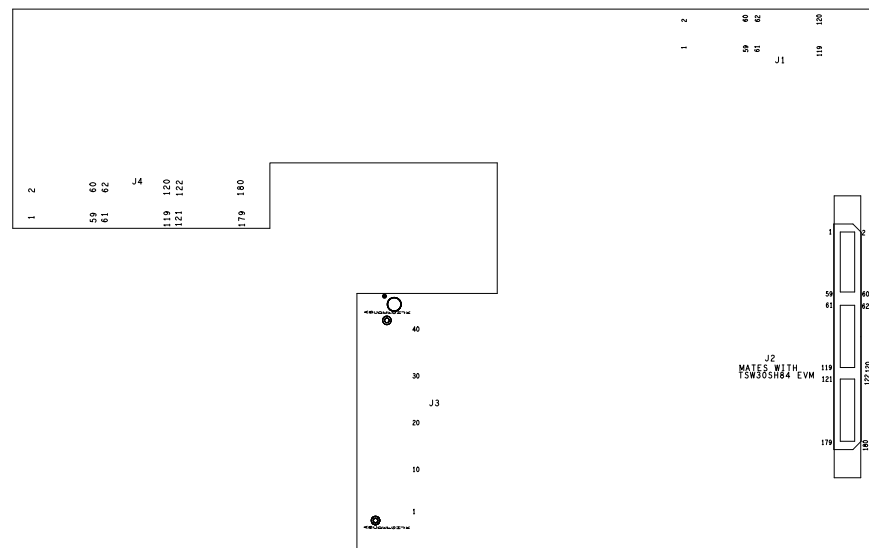


THIS DRAWING IS INTENDED TO HELP IN THE ASSEMBLY OF THE DESIGN.

REVISIONS				
ZONE	LTR	DESCRIPTION	DATE	APPROVED

- REFER TO ODB++ FILE FOR SPECIFIC COMPONENT LOCATION INFORMATION.
- USE WATER SOLUBLE FLUX DURING BOARD ASSEMBLY.  
RoHS COMPLIANT AND LEAD FREE.



TOP SIDE

BOTTOM SIDE

UNLESS OTHERWISE SPECIFIED DIMENSIONS ARE IN INCHES TOLERANCES ARE: FRACTIONS DECIMALS ANGLES +/- .XX +/- .01 +/- +/- .XXX +/- .005 +/-	CONTRACT NO.		TEXAS INSTRUMENTS INC.				
	APPROVALS		DATE		ASSEMBLY DRAWING ARRIA V-TI ADAPTER		
DRAWN J CANTRELL		05-11-12					
MATERIAL SEE NOTE 5		ENGR J SETON		05-11-12			
FINISH SEE NOTES 7, 8, 9				SIZE B	CODE IDENT NO.	DRAWING NO.	REV. C
DO NOT SCALE DRAWING				SCALE NONE	SHEET 1 OF 1		