



ISL Products International

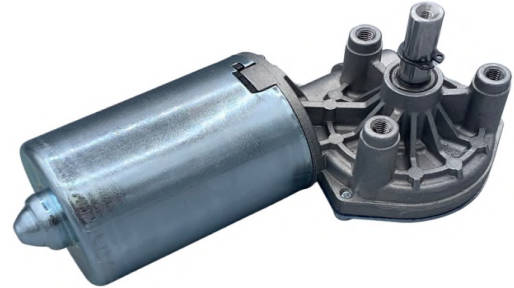
**ø59mm Worm Gear Motor
Right Side Gearbox
MOT-I-81557-102**

Online ID#:

WGM-59-24-220-R

Our Worm Gear Motors are an excellent automation solution providing right angle output with self-braking technology. They are equipped to handle varying loads and are best for intermittent duty operation. With endless performance combinations, we have the gear motor for your next application.

Contact Us for alternative solutions!



Specifications			
Gearhead Type:	Worm - Right side	No-Load Speed:	220 rpm (+/- 10%)
Motor Type:	Carbon - Brushed	No-Load Current:	< 1.5 A
Rated Voltage:	24V DC	Stall Torque:	* 214 kg.cm
Rated Speed:	181 rpm	Max. Power:	120 W
Rated Torque:	38 kg.cm	Termination Style:	Connector: AMP 180907-0

* Gearbox limitations are set at 150 kg.cm, operating past this torque limit may create premature failure.

Dimensions

units: mm

Key dimensions shown in drawings include: 31, 30°, 120°, 14.4, R4.5, 50.8 ±0.1, 11, 35, 46, 5, 31 ±0.5, 150, 15 min., 3x M6, 119, 166.9 ±0.3, 131.9 ±0.5, 92.5 ±0.3, 22.5, 59.1, 96.6, 9, 1.3 ±0.1, 7.75, 3 h9, 3.7 h11, 0.5 ±0.05, 1.1 H13, 12 ±0.1, 18.5 ±0.1, 29.4 ±0.1, 1.3 ±0.1, 1.3 ±0.1, 0.5 ±0.05, 1.1 H13, 12 ±0.1, 18.5 ±0.1, 29.4 ±0.1.

Output Shaft Detail: KEY 3x3.7 UN64006, R5.25, 1.3 ±0.1, 0.5 ±0.05, 1.1 H13, 12 ±0.1, 18.5 ±0.1, 29.4 ±0.1, 3 h9, 3.7 h11, 1.1 H13, 12 ±0.1, 18.5 ±0.1, 29.4 ±0.1.

Power cables: Brown + Green 18AWG, style 1599, 100°C, 300V with termination TE100009-1

Connector: AMP 180907-0 or C563H021

