

## Quality Control Standard

### 出货品质标准

Valued customer 客户名称 :	Customer Product Name/No. (客户产品名称/编号):	边轮	
Model No 机种编号 :	RP360-ST-15260	Swatch No.: 样品编号	EHA231-0020
Our Code No. 仕样编号 :	RP360-ST-00070V 陈礼云2023/1/12	(Please Use Our Code No. To Order) (订货时请用此仕样编号)	Date作成日: <span style="color: red;">2023/1/11</span> Rev. Rev. Date修订日:
		备注	DV ROHS

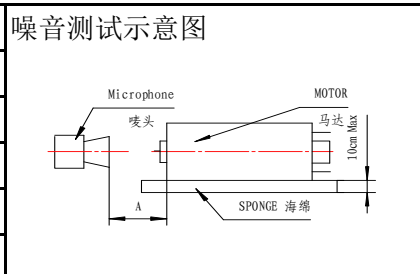
### 1. Conditions of Standard Operation / 工作条件

1- 1 )Driving Voltage 驱动电压	: <span style="color: red;">12</span> V	DC Constant between motor terminals. 马达端子电压 <span style="color: red;">12</span> V 直流恒压。
1- 2 )Direction of Rotation 回转方向	: <span style="color: red;">CCW</span>	viewing from metal housing. <span style="color: red;">CCW</span> 面对马达金属外壳时。
1- 3 )Position of Motor 马达放置状态	: To be placed horizontally when measuring. 测试时水平放置。	

1- 4 )Operating Temperature工作温度	: <span style="color: red;">-10</span> °C to <span style="color: red;">60</span> °C	
1- 5 )Operating Humidity工作湿度	: 30%RH to 95%RH	

### 2. Conditions of Standard Test / 测试条件

2- 1 )Testing Temperature测试温度	: 10°C to 30°C	
2- 2 )Testing Humidity测试湿度	: 30%RH to 95%RH	



### 3. Initial Electrical Characteristics / 初期特性

3- 1 ) No Load Speed 无负荷转速	: <span style="color: red;">6600</span> ± <span style="color: red;">1000</span> rpm <span style="color: red;">6600</span> ± <span style="color: red;">1000</span> 转/分	
3- 2 ) No Load Current 无负荷电流	: <span style="color: red;">120</span> mA max. : 最大 <span style="color: red;">120</span> 毫安培	
3- 3 ) Stall Torque 堵转扭力	At Load 3.0 & 10.0 mNm : <span style="color: red;">190</span> g.cm min. : 最小 <span style="color: red;">190</span> g.cm	
3- 4 ) Stall Current 堵转电流	在负载点 3.0 & 10.0 mNm : <span style="color: red;">2050</span> mA max. : 最大 <span style="color: red;">2050</span> 毫安培	
3- 5 ) Mechanical Noise(vertical from housing side) <span style="color: red;">10</span> cm Background noise 30dB Max) 机械噪音(距离铁壳侧 <span style="color: red;">10</span> cm, 环境噪音30dB Max)	: <span style="color: red;">70</span> dB Or below(RMS)JIS-A Characteristics dB 以下(RMS)JIS-A特性	
3- 6 ) Reference Performance Curve 参考性能曲线	: As per attached Sheet <span style="color: red;">RP360-ST-15260</span> : 所附图表为 <span style="color: red;">RP360-ST-15260</span>	
3- 7 ) Dimensions 外形尺寸	: As per Drawing attached <span style="color: red;">WG- R360T-T17</span> : 所附图面为 <span style="color: red;">WG- R360T-T17</span>	
3- 8 ) End play of Shaft 虚位	: <span style="color: red;">0.05</span> ~ <span style="color: red;">0.40</span> mm : <span style="color: red;">0.05</span> ~ <span style="color: red;">0.40</span> 毫米	

For & on behalf of Customer  <span style="color: blue;">Jack Lee 2023/01/11</span>	For & on behalf of Standard Motor Co., Ltd.  <div style="text-align: center;"></div>
--	--

As a reminder, the specification should be signed and returned within two weeks, or it will be considered as acceptable by the customer. 如果客户两周内不签字确认并返回, 将被视为已认可此规格。

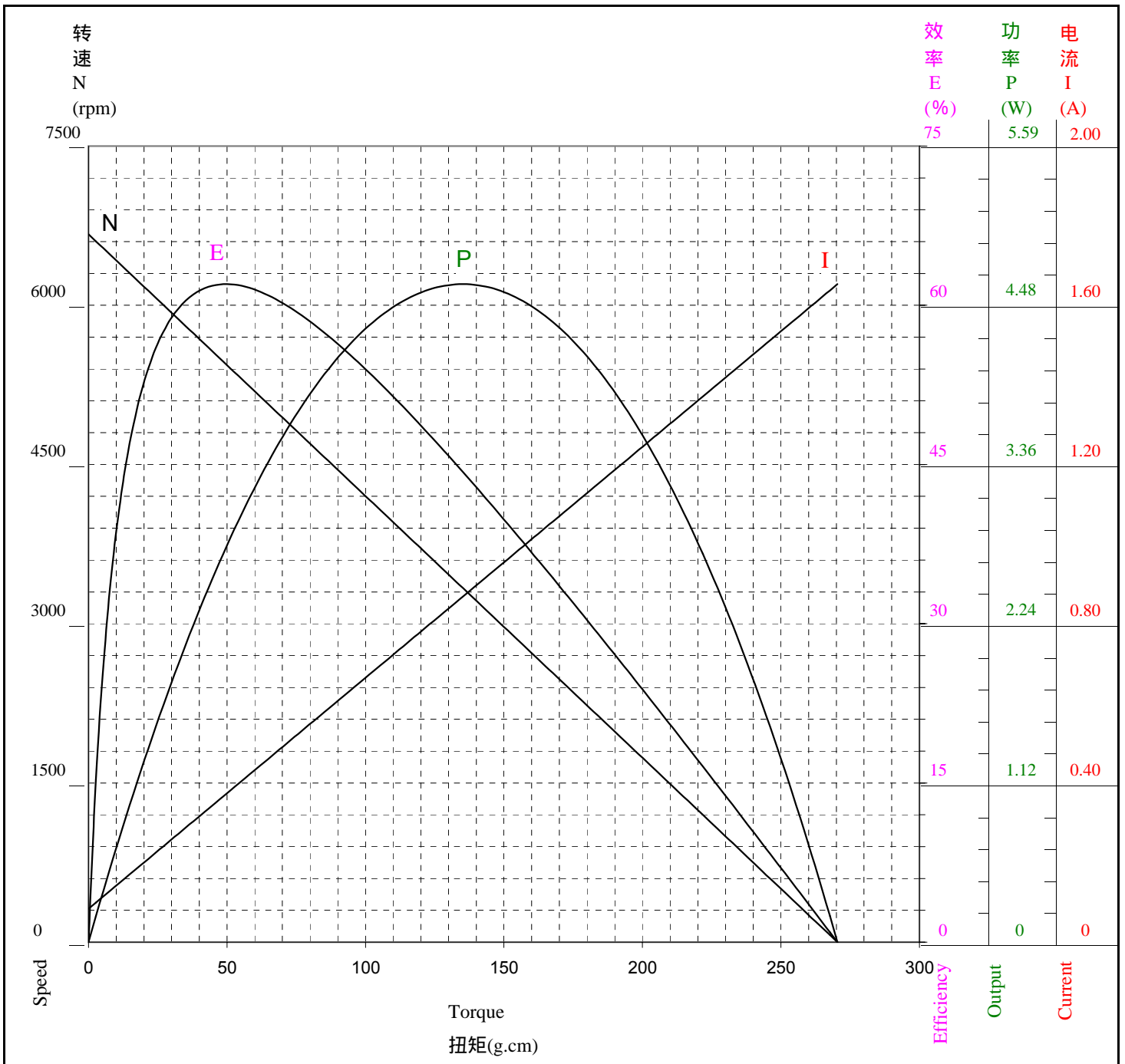
性能表只供参考  
马达实际参数请以马达出货标准为主



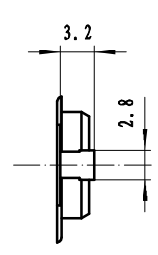
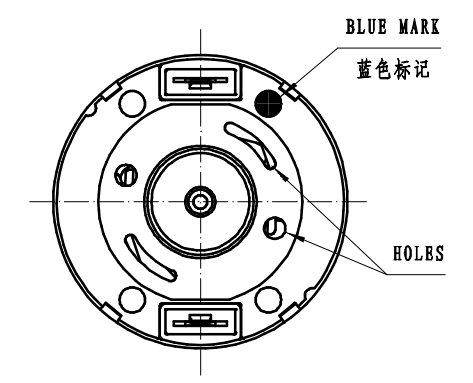
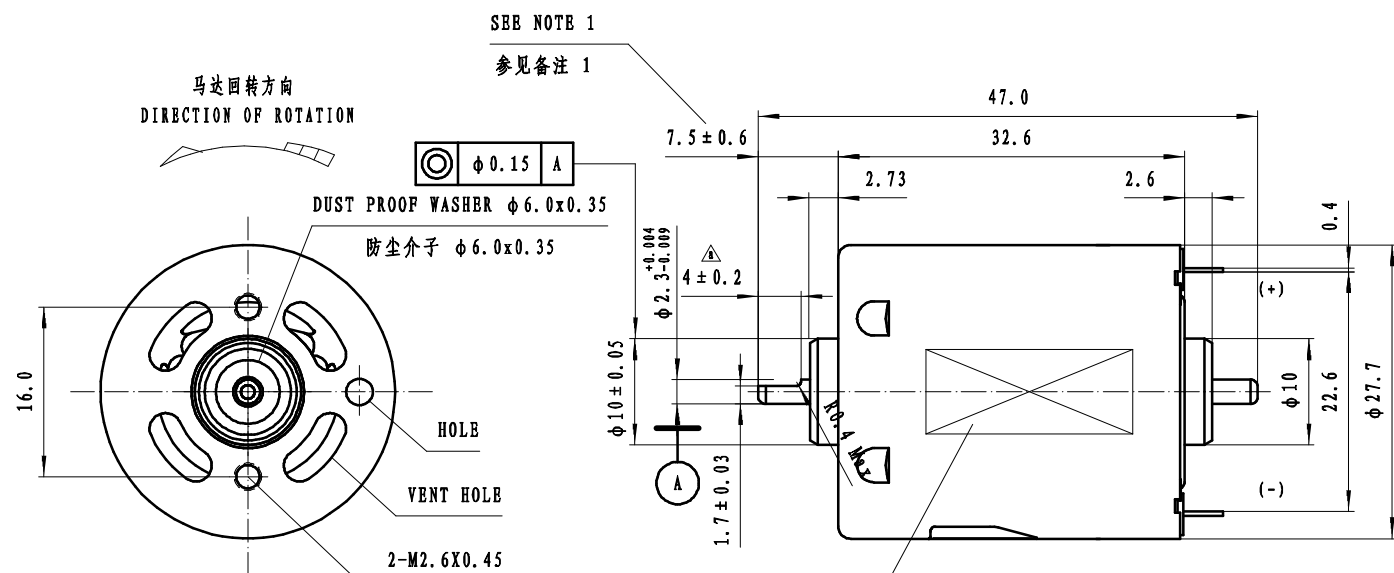
# STANDARD MOTOR 標準微型摩打有限公司

两点法： 30.6 g.cm & 102.0 g.cm

Model/Winding 型号/卷线	Voltage 电压 V	No Load 无负荷		At Maximum Efficiency 最大效率点				At Maximum Output 最大功率点				Stall 停止	
		Current 电流 A	Speed 转速 rpm	Current 电流 A	Speed 转速 rpm	Torque 扭矩 g.cm	Efficiency 效率 %	Current 电流 A	Speed 转速 rpm	Torque 扭矩 g.cm	Output 功率 W	Current 电流 A	Torque 扭矩 g.cm
RP360-ST-15260	12.0	0.084	6670	0.373	5444	49.7	62.0	0.870	3335	135.2	4.62	1.657	270.4



日期	标记	位置	记事	担当	确认
12.11.20	△x1	B4	4.0±0.1改为4.0±0.2	曹增斌	王瑞修



NOTES(备注):

1. THIS DIM APPLIES ONLY WHEN MOTOR SHAFT IS IN EXTREME LEFT POSITION  
该尺寸适用于将轴压于左侧时
2. SHAFT END PLAY 0.05~0.40  
马达虚位(轴向串动) 0.05~0.40
3. SPECIFIED CONTENT WILL BE TYPEGRAPHICALBD IN CONFORMITY TO GB/TUP BOOK OF MOTOR  
按马达仕様书印刷指定内容

制图	吴慧	日期	12.10.15	组件编号		组件名称	代表机种	
设计	吴慧	日期	12.10.15			马达外观图	R360T	
校核		日期						
承认		日期		未注公差	± 0.3	路径	Motor\WG\R360\WG-R360T-T17	
STANDARD MOTOR CO.,LTD.				比例	2:1	图号	WG-R360T-T17	
							Rev a	A3