

REV. A		SHEET 1 OF 2		DOCUMENT NO. RVPX-J08EXX	
REVISIONS M					
LTR	DESCRIPTION			DATE	
A	INITIAL RELEASE			11-FEB-16	

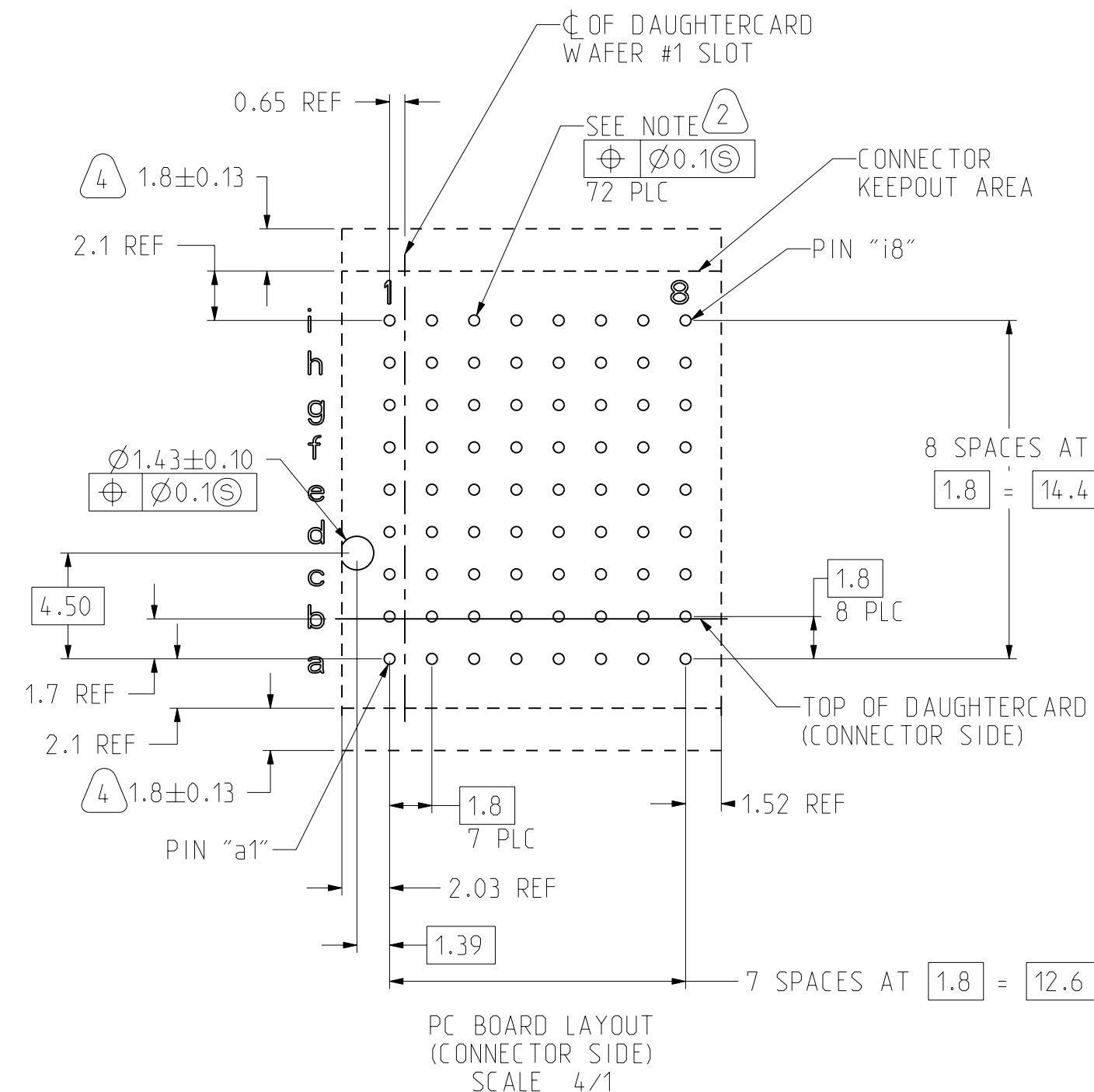
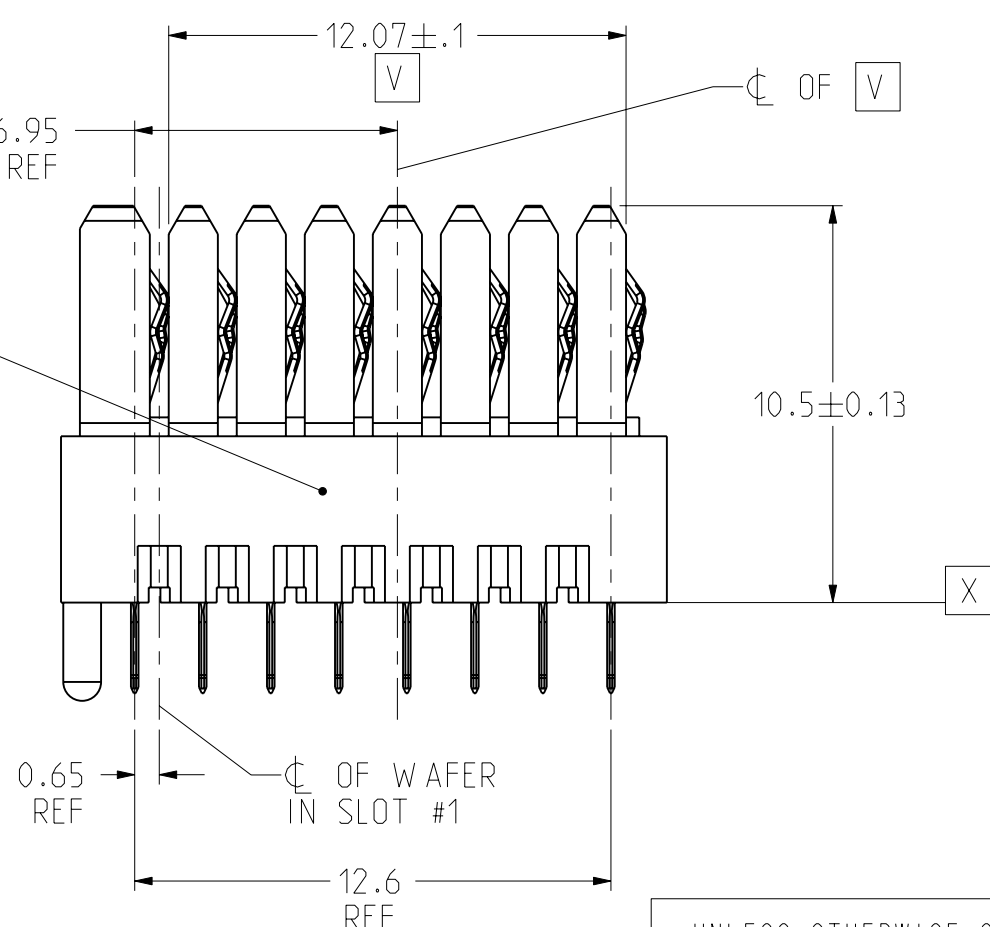
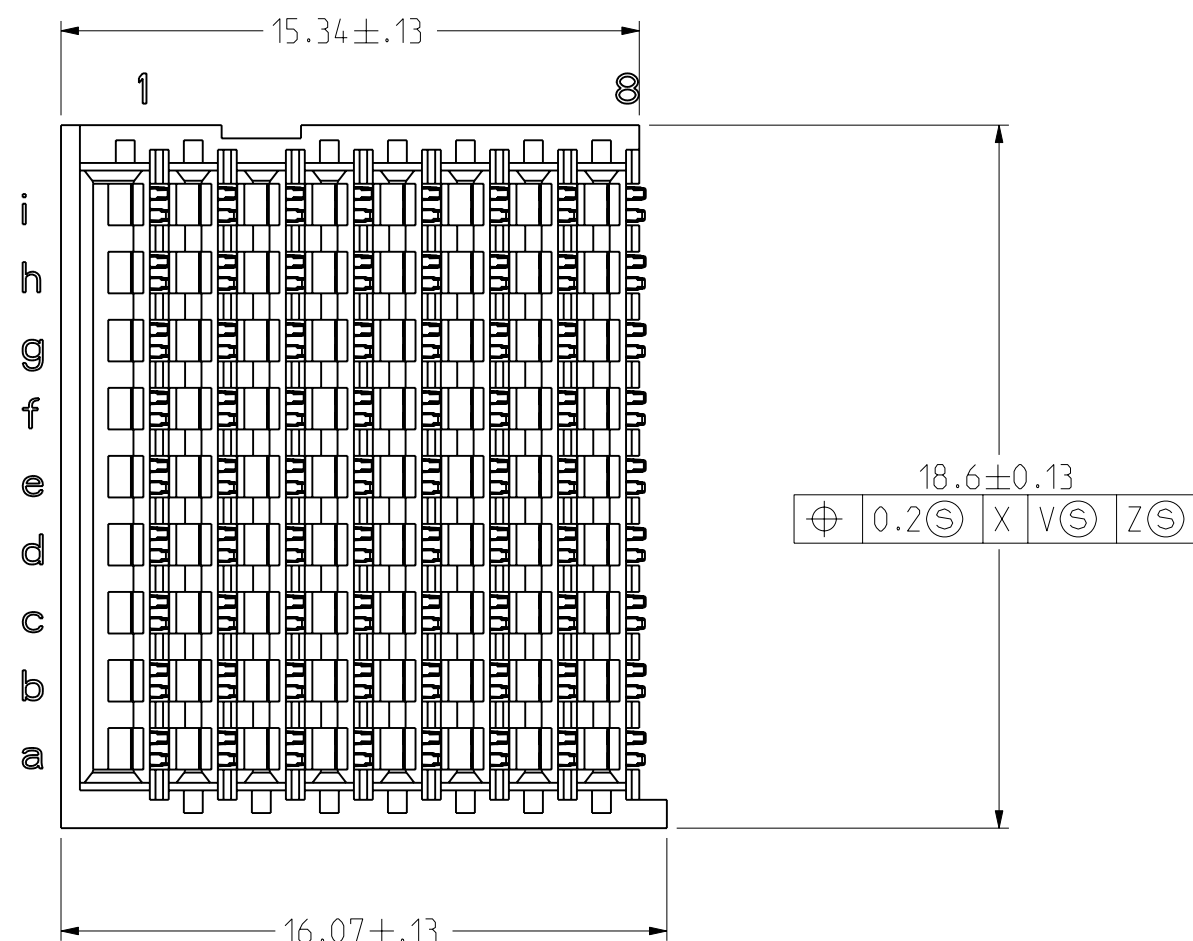
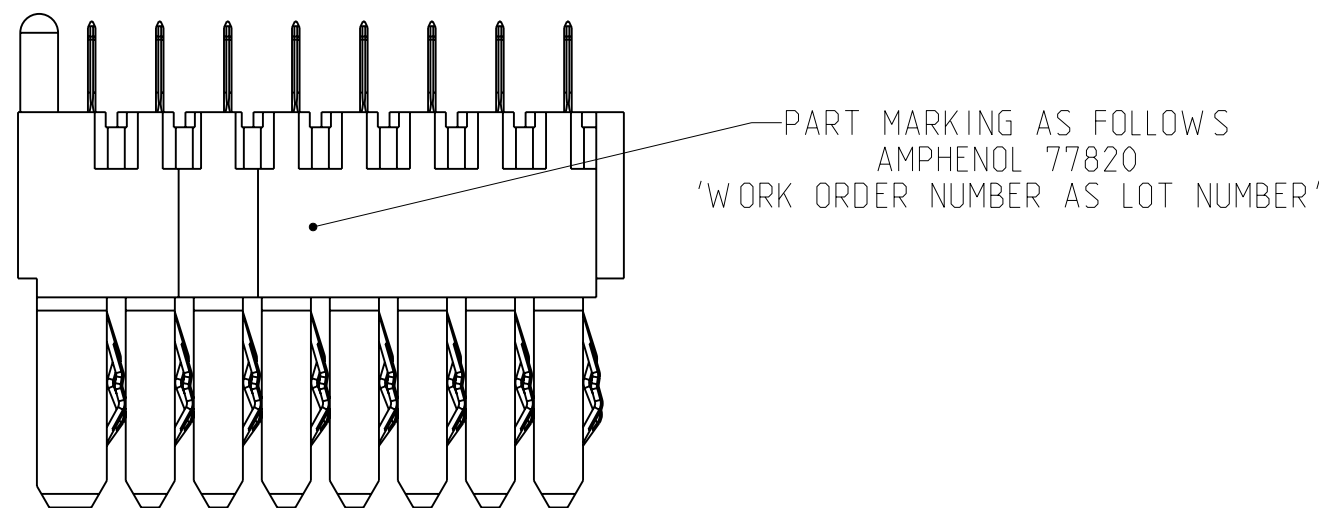
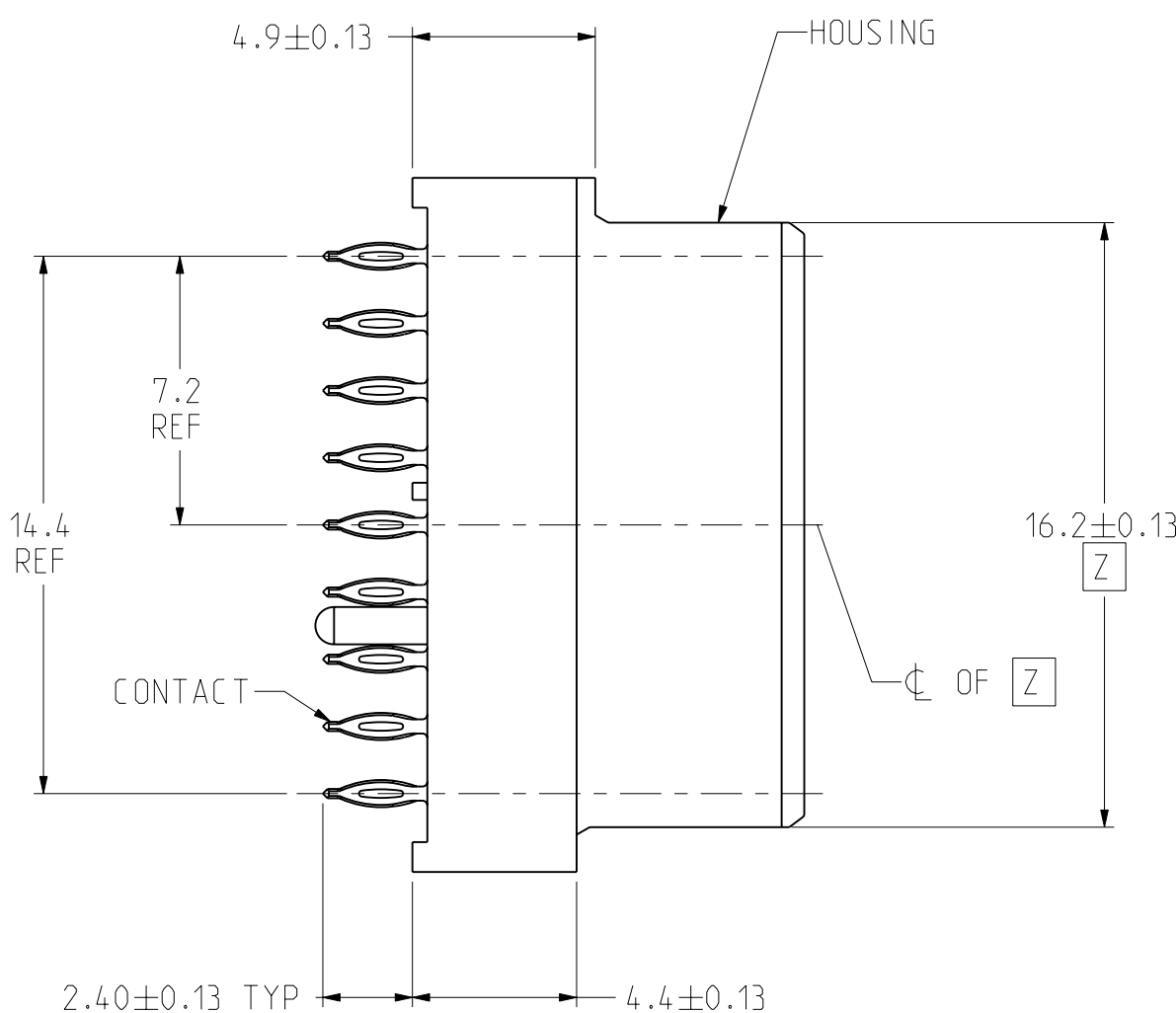


TABLE 1

PLATING THICKNESS AND MATERIAL BY PART NUMBER			
PART NUMBER	GOLD IN CONTACT AREA	COMPLIANT	NICKEL OVERALL
RVPX-J08EM1	50 μ-INCH MIN	50 μ-INCH MIN TIN	50 μ-INCH MIN
RVPX-J08EM2	50 μ-INCH MIN	50 μ-INCH MIN TIN-LEAD	50 μ-INCH MIN
RVPX-J08EC1	30 μ-INCH MIN	50 μ-INCH MIN TIN	50 μ-INCH MIN
RVPX-J08EC2	30 μ-INCH MIN	50 μ-INCH MIN TIN-LEAD	50 μ-INCH MIN

4 ADDITIONAL CONNECTOR-SIDE KEEPOUT AREA REQUIRED IF CONNECTOR-SIDE EXTRACTION TOOL IS TO BE USED.

3 SEE TABLE 1 FOR PART NUMBER AND FINISHES

2 PTH CALLOUT TYPICAL HOLE
 Ø0.63-.67 DRILL
 Ø0.56 ±.05 FINISH HOLE
 Ø1.02 PAD

NOTES: 1 HOUSING: GLASS FILLED LCP, UL94 - V0
 CONTACT: Cu ALLOY

THE USE OF THIS DOCUMENT IS UNLIMITED. HOWEVER, DOCUMENTS REFERENCED HEREON MAY CONTAIN LIMITED RIGHTS DATA.

DOCUMENT NO.	SHEET 1 OF 2	REV. A
RVPX-J08EXX		

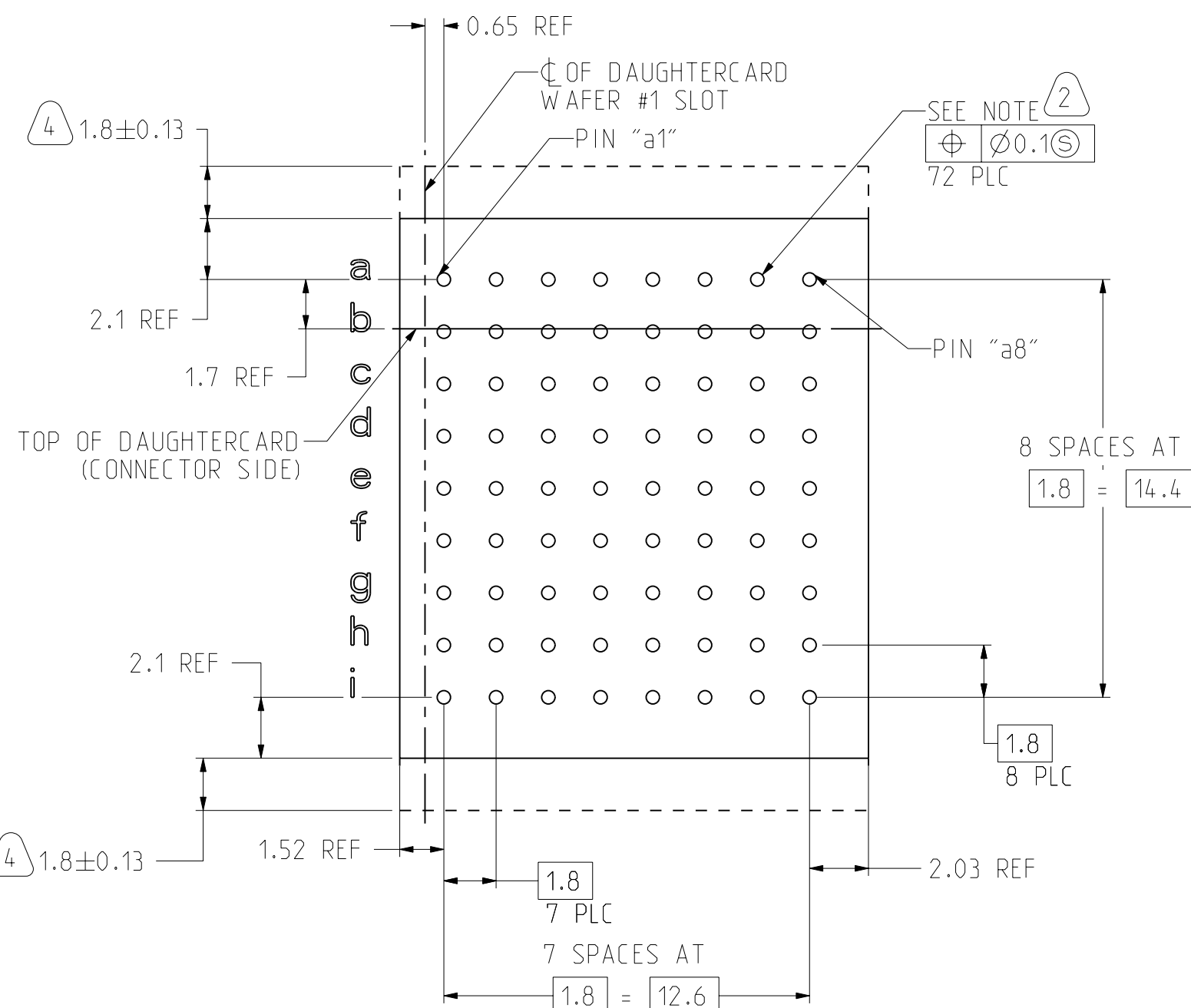
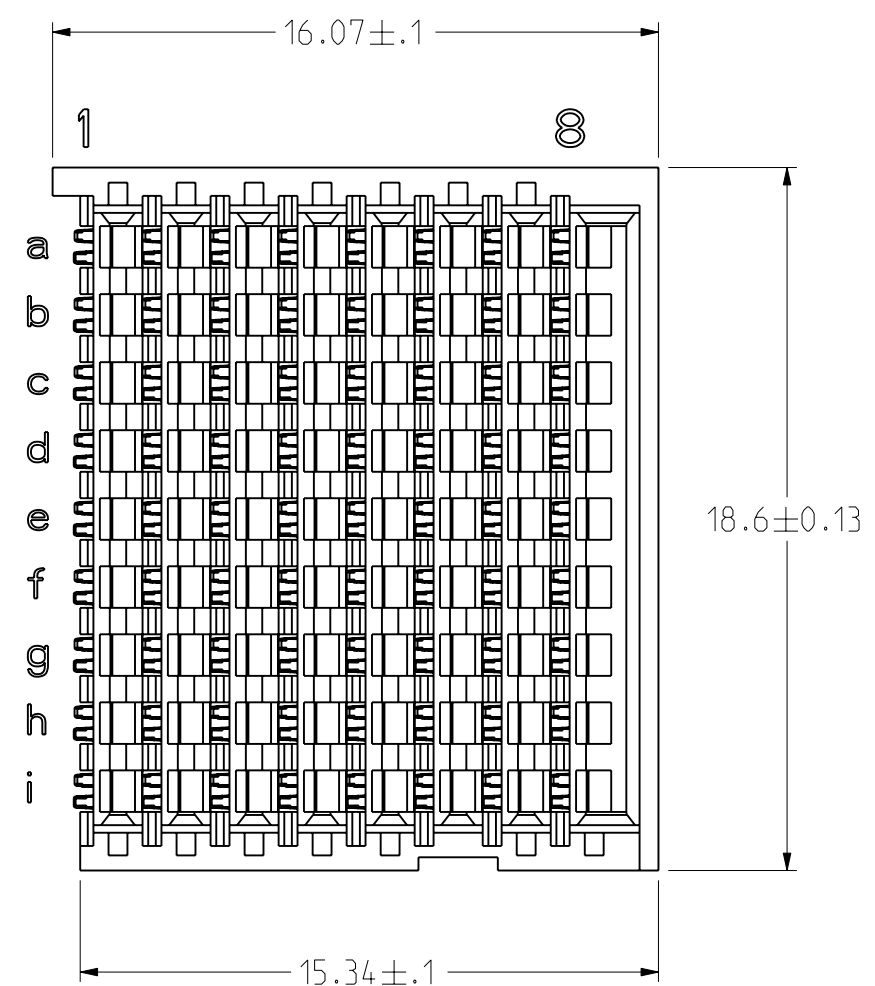
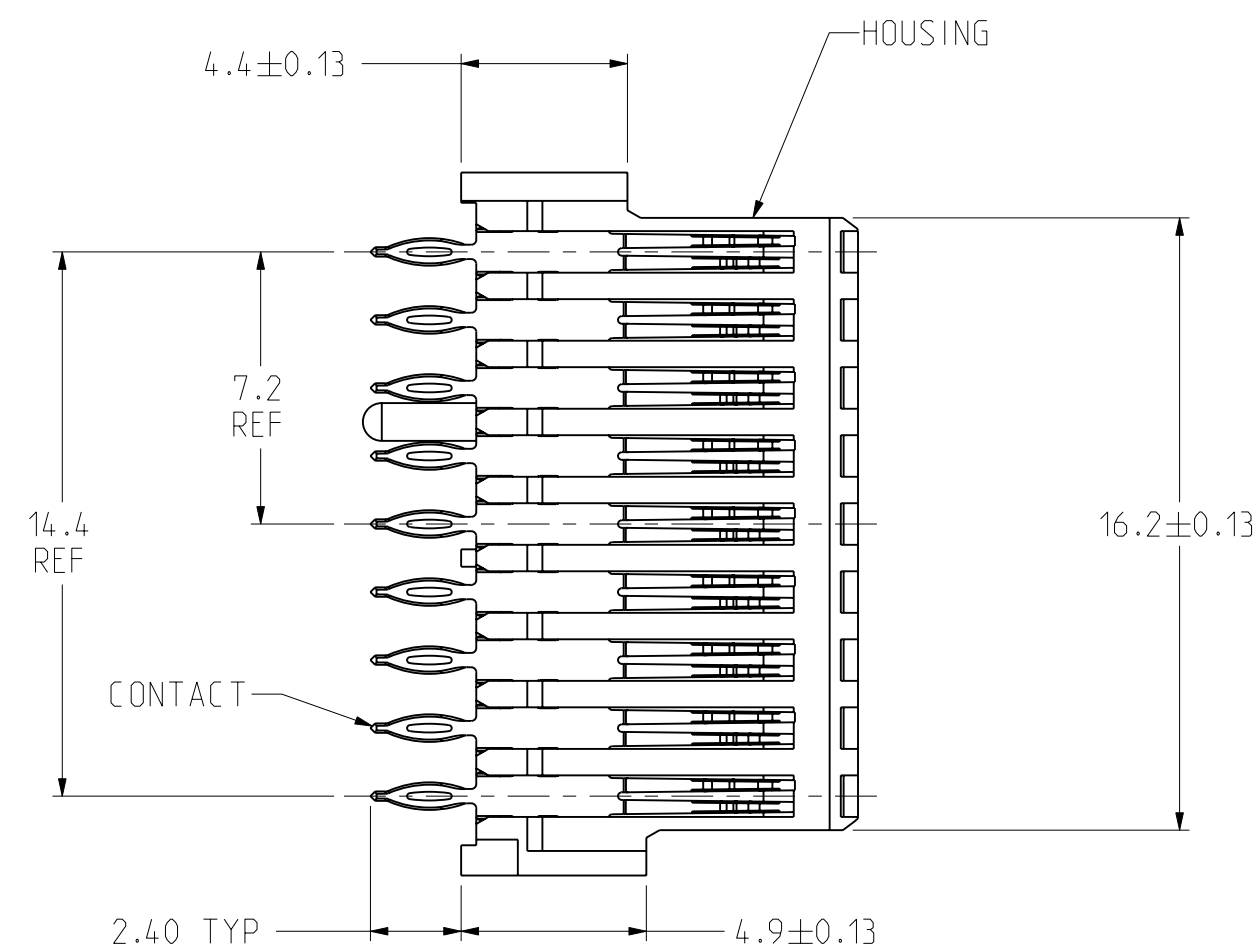
UNLESS OTHERWISE SPECIFIED	SPECIFICATIONS	POS	QTY	PART NUMBER	DESCRIPTION	NOTE																								
LINEAR DIMENSIONS ARE IN MILLIMETERS TOLERANCES: .XXXX = ± ANGLES= ±2° .XXX = ± .XX = ±.1 .X = ±.13	MATERIAL SPEC. N/A	PARTS LIST																												
DIM. & TOL. PER ASME Y14.5M; DRM PER MIL-DTL-31000; OTHER Amphenol Stds. PER 9-3800	PROCESS SPEC. 9-3895 9-3856-5	APPROVALS																												
LEGENDS: =FLAG NOTE CALL OUT REFERENCE ONLY		<table border="1"> <tr> <td>PREPARED BY</td> <td>S. LANGELIER</td> <td>DATE</td> <td>22-SEP-15</td> </tr> <tr> <td>ENGINEER IN CHARGE</td> <td>S. LANGELIER</td> <td></td> <td></td> </tr> <tr> <td>DESIGN MANAGER</td> <td>J. PAUL</td> <td></td> <td></td> </tr> <tr> <td>DESIGN ACTIVITY GROUP</td> <td>BOARD LEVEL</td> <td></td> <td></td> </tr> </table>					PREPARED BY	S. LANGELIER	DATE	22-SEP-15	ENGINEER IN CHARGE	S. LANGELIER			DESIGN MANAGER	J. PAUL			DESIGN ACTIVITY GROUP	BOARD LEVEL										
PREPARED BY	S. LANGELIER	DATE	22-SEP-15																											
ENGINEER IN CHARGE	S. LANGELIER																													
DESIGN MANAGER	J. PAUL																													
DESIGN ACTIVITY GROUP	BOARD LEVEL																													
		<table border="1"> <tr> <td colspan="4">AMPHENOL CORPORATION</td> </tr> <tr> <td colspan="4">40-60 DELAWARE AVENUE SIDNEY, NY, 13858</td> </tr> <tr> <td colspan="4">CONNECTOR ASSEMBLY, BACKPLANE VERTICAL RECEPTACLE, 8 POS., LEFT END RVPX</td> </tr> <tr> <td>SIZE</td> <td>CAGE CODE</td> <td>DOCUMENT NO.</td> <td>REV.</td> </tr> <tr> <td>C</td> <td>77820</td> <td>RVPX-J08EXX</td> <td>A</td> </tr> <tr> <td>SCALE: 5.0</td> <td>REF. NONE</td> <td colspan="2">SHEET 1 OF 2</td> </tr> </table>					AMPHENOL CORPORATION				40-60 DELAWARE AVENUE SIDNEY, NY, 13858				CONNECTOR ASSEMBLY, BACKPLANE VERTICAL RECEPTACLE, 8 POS., LEFT END RVPX				SIZE	CAGE CODE	DOCUMENT NO.	REV.	C	77820	RVPX-J08EXX	A	SCALE: 5.0	REF. NONE	SHEET 1 OF 2	
AMPHENOL CORPORATION																														
40-60 DELAWARE AVENUE SIDNEY, NY, 13858																														
CONNECTOR ASSEMBLY, BACKPLANE VERTICAL RECEPTACLE, 8 POS., LEFT END RVPX																														
SIZE	CAGE CODE	DOCUMENT NO.	REV.																											
C	77820	RVPX-J08EXX	A																											
SCALE: 5.0	REF. NONE	SHEET 1 OF 2																												

PRO/ENGINEER INFORMATION
 Pro/e Model Used:
 RVPX-J08EXX.ASSEM
 Drawing Name:
 RVPX-J08EXX

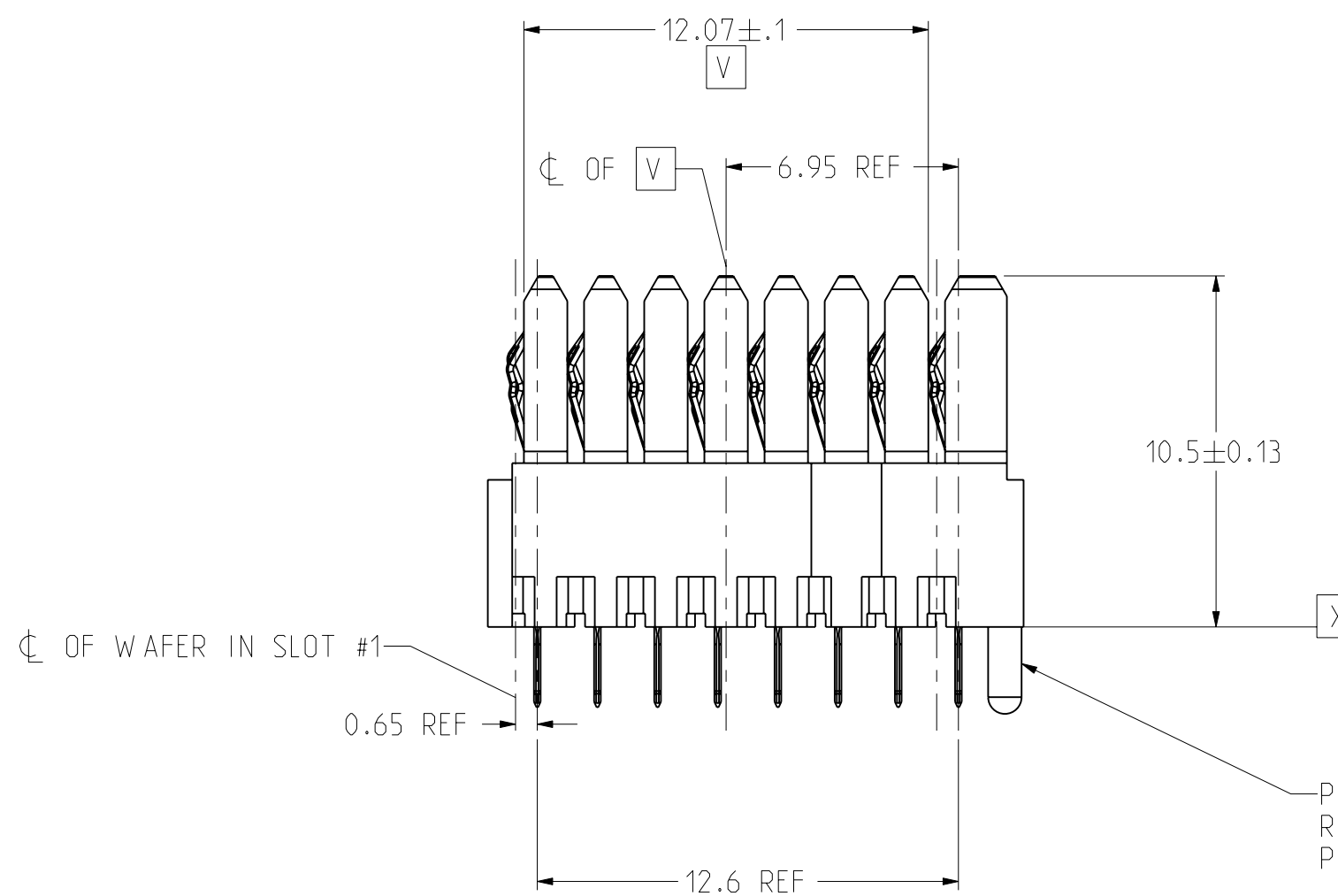
NEXT ASSEMBLY

DOCUMENT NO.	SHEET 1 OF 2	REV. A
RVPX-J08EXX		

REAR TRANSITION MODULE APPLICATION



RTM PC BOARD LAYOUT (CONNECTOR SIDE) SCALE 5/1



PLASTIC ALIGNMENT PIN MUST BE REMOVED FLUSH TO HOUSING BODY PRIOR TO INSERTION INTO RTM LAYOUT

NOTES:

THE USE OF THIS DOCUMENT IS UNLIMITED. HOWEVER, DOCUMENTS REFERENCED HEREON MAY CONTAIN LIMITED RIGHTS DATA.

SIZE C	CAGE CODE 77820	DOCUMENT NO. RVPX-J08EXX	REV. A
SCALE: 5.0		REF: NONE	SHEET 2 OF 2