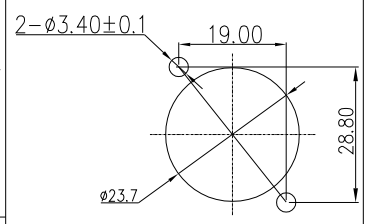
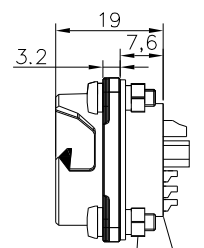
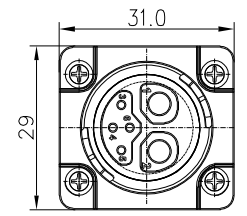


REV.	ECN NO.	DESCRIPTION	SIGN	DATE
C1	N/A	INITIAL DRAWING	Liu	2020/05/20

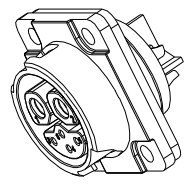
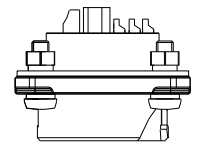


RECOMMENDED PANEL Cut-Out



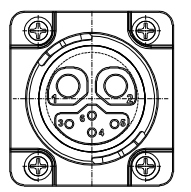
Screw  
Washer  
Nut  
Gasket

Connector  
Female Pin



- Specification:
- 1.Operation Temperature: -45℃~105℃.
  - 2.Insulation Resistance:100MΩ at DC500V.
  - 3.Contact Resistance:<10mΩ.
  - 4.Withstand Voltage: 1500V AC, 1min
  - 5.Operating Current:50A+5A
  - 6.Operating Voltage:AC 300V
  - 7.Waterproof Rate:IP67 (Mated)
  - 8.Housing:Nylon, Black
  - 9.Female Pin:Copper Alloy, Gold Plated
  - 10.Gasket:Silicon Black
  - 11.Screw: Stainless Steel
  - 12.Washe: Stainless Steel
  - 13.Nut: Stainless Steel
  - 14.RoHS Compliant.
  - 15.Mating Cap P/N:806-00058-00

22XXX636-01  
Pin Number



2+4 Pin  
P/N: 24204636-01  
Pin Assignments  
Front View

UNIT:mm	DESCRIPTION Large Series Push Lock Female socket With Female Pin	
TOLERANCE .X ±0.25 .XX ±0.15 .XXX ±0.05 ANGLES ±1°	SCALE 1:1	SHEET 1 OF 1
REV. C1	SIZE A4	* :Inspection Item

**CHOGORI®**

PART NO 24204636-01	DRAWN BY Liu	DATE 2020/05/20
DWG NO	CHECKED BY Mo	DATE 2020/05/20
CUSTOMER	APPROVED BY Adley	DATE 2020/05/20

THIS INFORMATION IS CONFIDENTIAL AND IS DISCLOSED TO YOU ON CONDITION THAT NO FURTHER DISCLOSURE IS MADE BY YOU TO OTHER THAN CHOGORI PERSONNEL WITHOUT AUTHORIZATION FROM CHOGORI CORP.