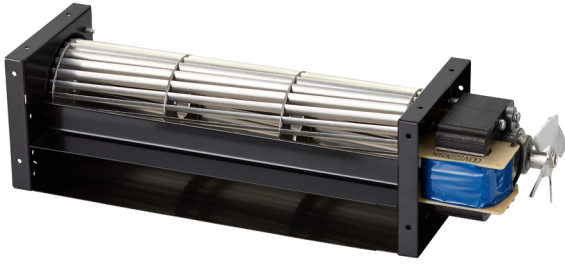


# JE-060A

## J SERIES AC CROSSFLOW FAN



VOLTAGE	120V, 230V
BEARINGS	Ball Bearings
MOTOR	AC Shaded Pole Type 1ø 2p
IMPELLER	Aluminum Alloy
LENGTH (C)	Min 10.1in (257mm), Max 20.0in (507mm)
AIRFLOW	63~180 CFM (1.8~5.1 m³/min)
OPERATING TEMP	0°C~45°C
OPERATING LIFE	30,000 hours @ 40°C

Model Number	inches (mm)				V	Hz	A	W	RPM	Pressure (P)		Airflow (Q)		dBA	kg
	A	B	C	D						mmAq	inH <sub>2</sub> O	m³/min	CFM		
JE-06018A12L	7.2	7.8	10.1		120	60	0.33	23	1700	3.8	0.15	1.8	63	35	1.20
JE-06018A23L	(184)	(199)	(257)		230	50	0.17	23	2100	3.7	0.14	2.5	88	39	
JE-06018A12H	7.2	7.8	10.3	11.0	120	60	0.55	37	2400	7.3	0.29	3.0	106	47	1.35
JE-06018A23H	(184)	(199)	(262)	(280)	230	50	0.27	34	2400	5.4	0.21	3.0	106	47	
JE-06024A12L	9.6	10.2	12.7		120	60	0.42	31	1600	4.9	0.19	2.9	102	41	140
JE-06024A23L	(245)	(260)	(323)		230	50	0.23	31	1900	3.9	0.15	3.3	118	42	
JE-06024A12H	9.6	10.2	12.7	13.4	120	60	0.60	42	2200	5.1	0.20	3.8	133	42	1.50
JE-06024A23H	(245)	(260)	(323)	(341)	230	50	0.27	35	2200	4.6	0.18	3.8	133	44	
JE-06030A12	12.0	12.6	15.1	15.8	120	60	0.63	42	1700	4.7	0.19	3.2	114	42	1.50
JE-06030A23	(306)	(321)	(384)	(402)	230	50	0.28	36	2100	4.6	0.18	4.4	154	44	
JE-06036A12	14.5	15.1	17.6	18.3	120	60	0.64	43	1500	3.0	0.12	3.8	133	41	1.60
JE-06036A23	(368)	(383)	(446)	(464)	230	50	0.30	38	1900	4.2	0.17	4.7	167	43	
JE-06042A12	16.9	17.5	20.0	20.7	120	60	0.64	44	1400	2.2	0.09	3.9	139	41	1.65
JE-06042A23	(429)	(444)	(507)	(525)	230	50	0.31	40	1700	3.3	0.13	5.1	180	43	

