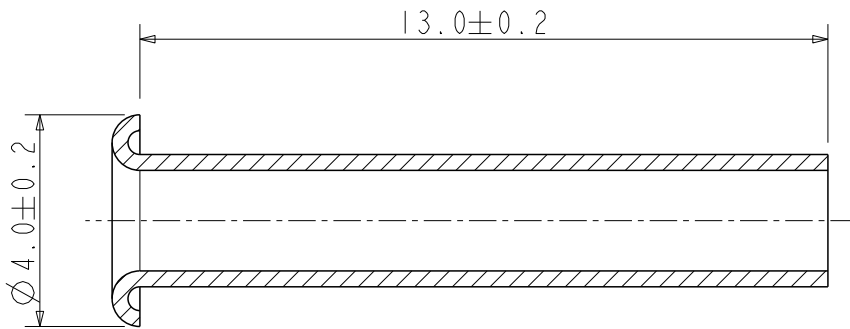


Part number
HPTE1624BLF

SECTION A-A



NOTE: RoHS INFORMATIONS:

- The "LF" product meets European union Directives and other country regulations as described in GS-20-008.
- The product is not intended to be exposed to a manufacturing solder process.
- Packaging spec: see GS-14-920.

NOTE:

- Material: Brass 5150-04

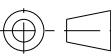
rev	ecn no	dr	date
A	LS07-0036	JTA	2007/02/08
B	LS08-0229	JTA	2008/12/11
-	-	-	-
-	-	-	-
-	-	-	-
-	-	-	-
-	-	-	-

Surface coating: Tin plating 2 to 3 µm

www.fciconnect.com


surface 0.8 /  
ISO 1302

tolerance std  
ISO 406 ISO 1101

projection  


mm

TOLERANCES UNLESS OTHERWISE SPECIFIED

Dr	G. Dreesbeke	ANGULAR	LINEAR	0.X	±0.3	size	A4	Scale	7/1
Eng	-			0.XX	±0.1				
Chr	-	0°	±2°	0.XXX	±0.05	ECN	LS08-0229		
Appr	-	Product family			Metral	Spec ref		-	
	title Rivet 2.5 x 13 HMI CC				dwg no BPA202466001_C			Rev. B	
catalog no				SEE TABLE		CUSTOMER		sheet 1 of 1	

REV F - 2006-04-17

PDM: Rev:B

STATUS: Released

Printed: Aug 01, 2010



Copyright FCI.