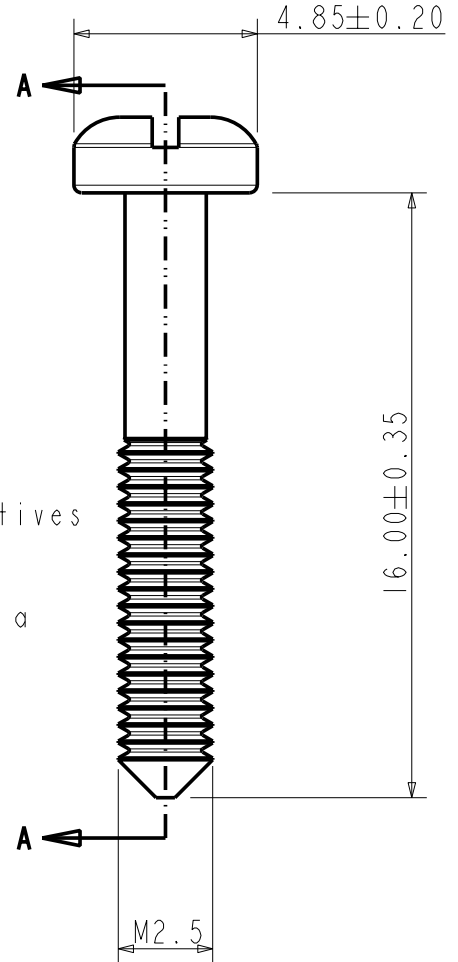
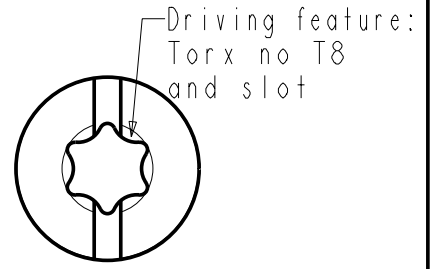
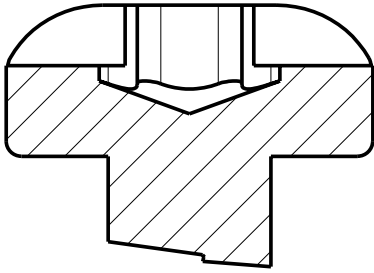


Part number	Comments
HPTE1623BLF	RoHS COMPATIBLE VERSION

SECTION A-A  
SCALE 10/1



NOTE : RoHS INFORMATIONS:

- The "LF" product meets European union Directives and other country regulations as described in GS-22-008.
- The product is not intended to be exposed to a manufacturing solder process.
- Packaging spec: see GS-14-920.

NOTE:

- Material: Steel 5.8

Surface coating: Copper 2µm to 4 max +  
Nickel 3µm 0/+2 .Bright sulfamate

rev	ecn no	dr	date
A	LS07-0036	JTA	2007/02/07
-	-	-	-
-	-	-	-
-	-	-	-
-	-	-	-
-	-	-	-
-	-	-	-

www.fciconnect.com		surface 0.8 ISO 1302 ✓	tolerance std ISO 406 ISO 1101	projection 	mm 	
TOLERANCES UNLESS OTHERWISE SPECIFIED						
Dr	G. Driesbeke	ANGULAR 0° ±2°	0.X	±0.3	size A4	
Eng	-		LINEAR	0.XX		±0.1
Chr	-		0.XXX	±0.05		
Appr	-	Product family		Metral	Spec ref	
				ECN	LS07-0036	

	title	Screw M2.5 x 16 HMI CC	dwg no	BPA202446001_C	Rev.	A
	catalog no		customer		sheet 1 of 1	

SEE TABLE  
PDM: Rev:A

STATUS: Released

Printed: Aug 01, 2010



Copyright FCI.