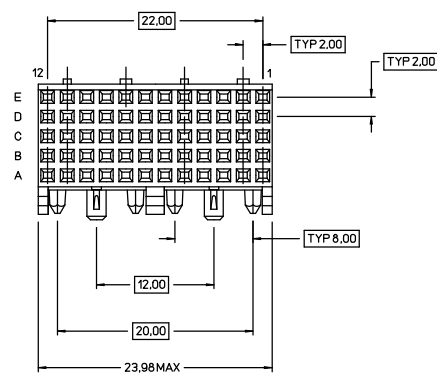
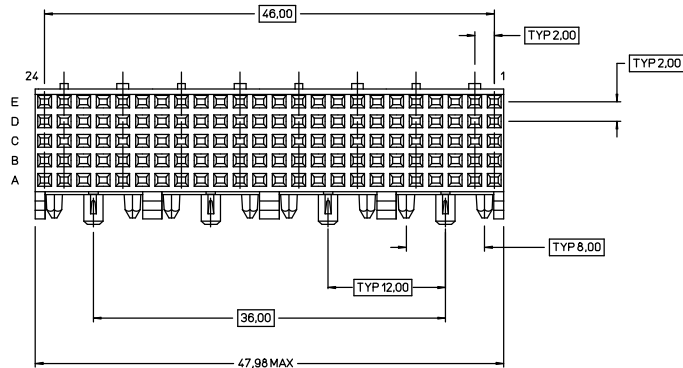


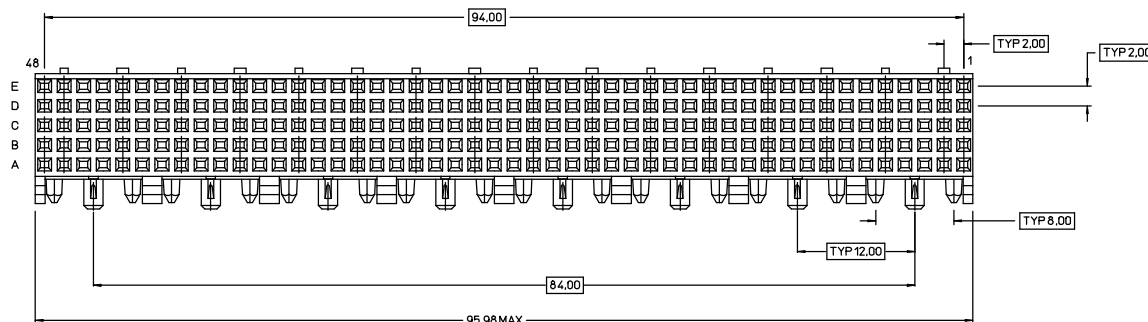
30 POSITION



60 POSITION



120 POSITION



240 POSITION

NOTES: UNLESS OTHERWISE SPECIFIED,

- 1 CONNECTOR MATERIALS:
HOUSING: GLASS FILLED THERMOPLASTIC,
UL94-V0 COMPLIANT.
TERMINAL: PHOSPHOR BRONZE ALLOY
- 2 CONTACT FINISH:
PERFORMANCE LEVEL 6 = 0.75 MICRONS (30 MICRONCHES) MIN GOLD IN MATING AREA,
0.51 MICRONS (20 MICRONCHES) MIN TIN LEAD ON CONTACT TAILS,
1.91 MICRONS (75 MICRONCHES) MIN NICKEL ALL OVER
- 3 FEATURE MAY OR MAY NOT BE PRESENT DEPENDING UPON THE MOLD TOOL USED TO PRODUCE PRODUCT.

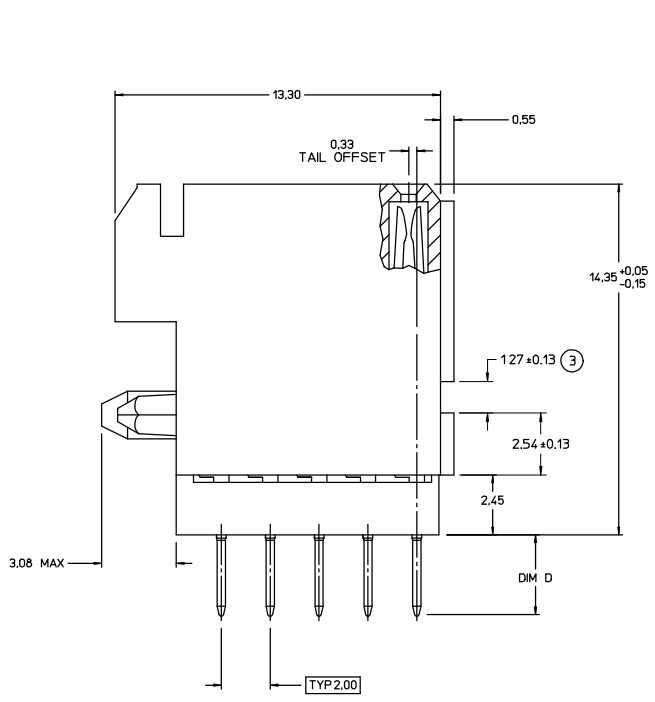
REV	REVISION DESCRIPTION	BY	CHKD	DATE
5	SHIT 1 INSULATOR MATL CALL OUT WAS "INSUL. MATERIAL: LCP (VAPOR PHASE OR INFRARED COMPATIBLE)." (ECN 34511)	JJK	RXS	09-30-96
4	"SEE REVISION REF. PRINT" (ECN 34511)	J.D.	JW	01-31-96
3	SH 1 ADDED CAT NO. H1MS5FRR000H6 & H1MS5FRR000H6, REVISED CAT NO. DESOP SH 2. ADDED TABLE L. SEE TAB. 1 WAS #0.60(0.10) ON PCB LAYOUT. (ECN 3287)	JW	GH	04-27-95
2	CHANGED PER E.C. 30011	GH	GH	5-12-94
1	DRAWING APPROVED			6-18-93

F SERIES STRAIGHT RECEPTACLE ASSY, 5 ROW, STB

CAT NO. H1MS5_F_R000H6		DWG RELEASED TO CENTRAL FILE 6-18-93		A DRWN PTS 01-20-93	
CAGE NO 09922 DON 710 PC 580		© FRAMATOME CONNECTORS USA INC.1995		P CHKD JJO 06-17-93	
				R DSIGN GFH 05-04-93	
				Y MKT LL 05-17-93	
				L OC LSB 05-13-93	
				DRAWING SCALE 4.1	
				DRAWING NO. REV	
				SE95247 G	
				SHEET 1 OF 2	

LINEAR MEASURE: mm (INCH)	
THIRD ANGLE PROJECTION	
- TOLERANCES -	
UNLESS OTHERWISE SPECIFIED	
NO. OF PLACES IN mm	mm (INCH)
NONE	+3 (-1)
ONE PLACE	+0.5 (-0.2)
TWO PLACES	+0.13 (-0.005)
ANGLES °/°	





CATALOG NUMBER DESCRIPTION

HM1 S 5 - F - R 000 H 6
 PRODUCT FAMILY HM1 = METRAL HM1
 PRODUCT TYPE S = FEMALE SIGNAL, STRAIGHT
 NUMBER OF ROWS 5 = 5 ROW
 BODY LENGTH
 1 = 12 mm (30 POSITION SIGNAL)
 2 = 24 mm (60 POSITION SIGNAL)
 3 = 48 mm (120 POSITION SIGNAL)
 4 = 96 mm (240 POSITION SIGNAL)
 MATING CONTACT F = FLAT FEMALE
 PERFORMANCE LEVEL 6 = 125 OPERATIONS + 10 DAYS MIXED GAS + 125 OPERATIONS
 INSULATING MATERIAL H = HIGH TEMPERATURE MATERIAL
 VARIATIONS 000 = STANDARD
 BOARD ATTACHMENT R = STANDARD STRAIGHT
 PCB TERMINATION TYPE R = SOLDER TAIL, DIM D = 3.30+0.30 S = SOLDER TAIL, DIM D = 4.10+0.30

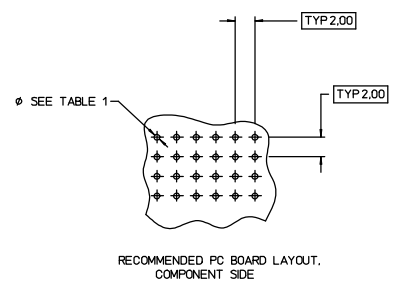


TABLE 1	
PLATED THROUGH HOLE REQUIREMENTS	
DRILL DIAMETER:	∅ 0.85
DRILLED HOLE	∅ 0.81-0.86
COPPER PLATING	25-50 MICROMETERS
TIN-LEAD PLATING	5-15 MICROMETERS
FINISHED HOLE ∅ (AFTER REFLOW)	0.85-0.80
TYP LAND SIZE	∅ 1.15

REV	ALL REVISIONS RECORDED ON SHT 1	BY	CHKD	DATE
-----	---------------------------------	----	------	------

F SERIES STRAIGHT RECEPTACLE ASSY, 5 ROW, STB
 CAT NO. HM1S5_F_R000H6

LINEAR MEASURE: mm (INCH)	mm (INCH)	DRWN	PTS 01-20-93
THIRD ANGLE PROJECTION		CHKD	JJO 06-17-93
		DSGN	GFH 05-04-93
		MKT	LL 05-17-93
		DC	LSB 05-13-93
		DRAWING SCALE	10:1
		DRAWING NO.	SE95247
		REV	G
		SHEET 2 OF 2	

